



TRAFFIC COUNTING: **2021 SEASON REVIEW**

MEET THE FIELD TEAM:

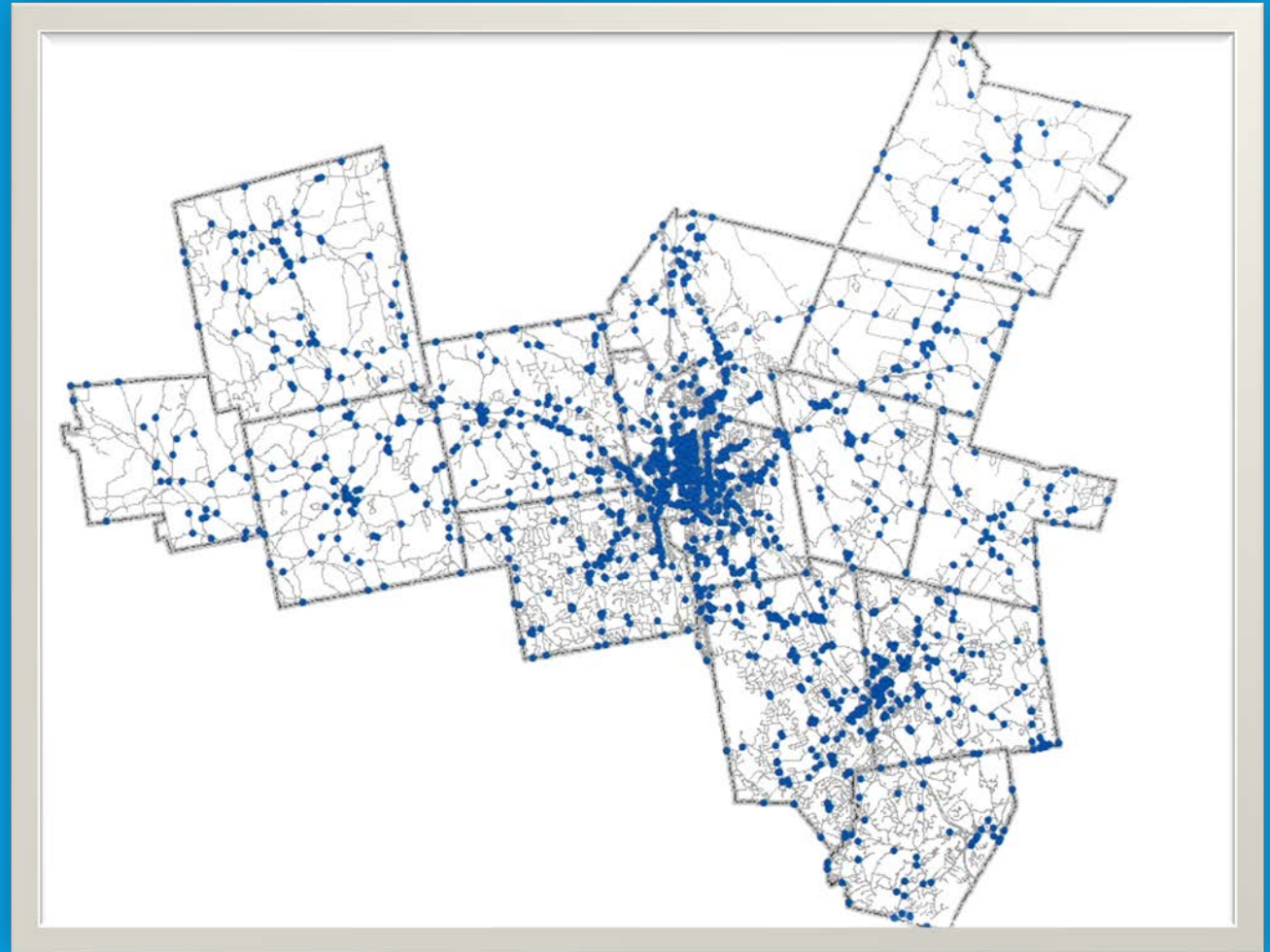


Ben Herbert
Monique Duchesne
Adam Hlasny
Cam Prolman



1,200 Overall Sites

3-year rotating cycle





BY THE NUMBERS:

- 408 total counts in all 14 SNHPC communities
- 214 SNHPC counts
- 194 NH DOT counts
- 60 field days
- 30 weeks (Apr 6–Nov 22)

BREAKDOWN BY TOWN

Auburn 2

Bedford 31

Candia 9

Chester 13

Deerfield 20

Derry 28

Fracestowm 18

Goffstown 24

Hooksett 21

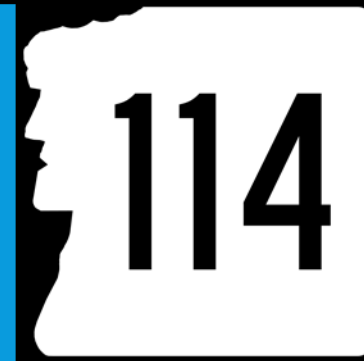
Londonderry 43

Manchester 159

New Boston 23

Weare 13

Windham 4



194 Counts

15 Classification counts

CLASSIFICATION COUNTS

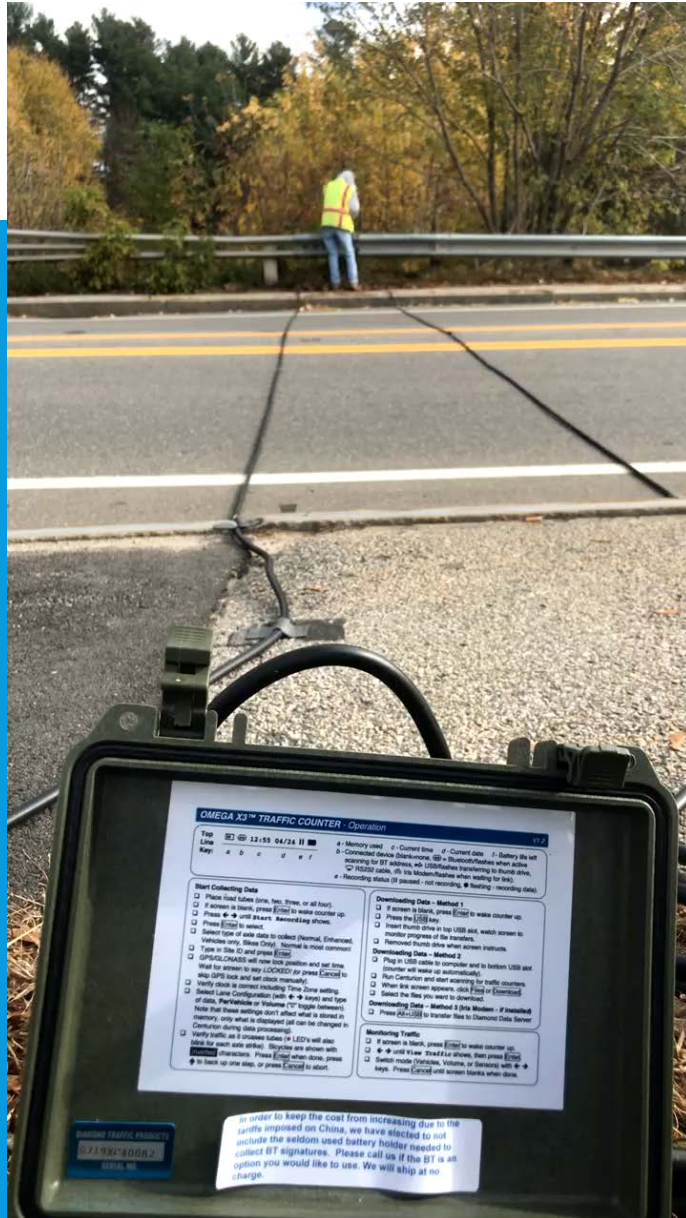
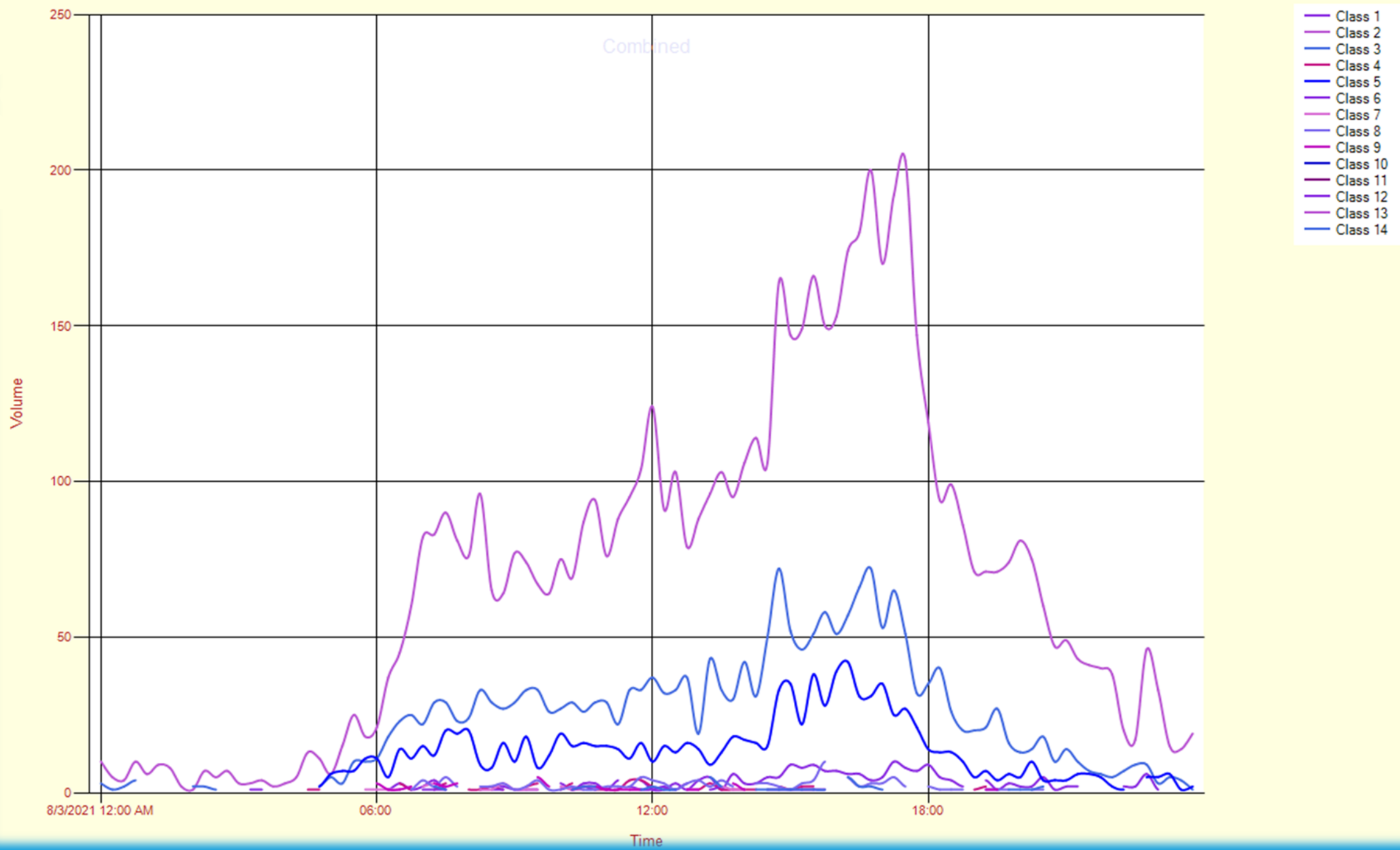


FIGURE 1-1

FHWA'S 13 VEHICLE CATEGORY CLASSIFICATION

Class 1 Motorcycles		Class 7 Four or more axle, single unit	
Class 2 Passenger cars	 	 	
Class 3 Four tire, single unit	 	Class 8 Four or less axle, single trailer	
Class 4 Buses	 	Class 9 5-Axle tractor semitrailer	
Class 5 Two axle, six tire, single unit	 	Class 10 Six or more axle, single trailer	
Class 6 Three axle, single unit	 	Class 11 Five or less axle, multi trailer	
		Class 12 Six axle, multi-trailer	
		Class 13 Seven or more axle, multi-trailer	

Source: Federal Highway Administration.



SPECIAL REQUEST

Volume

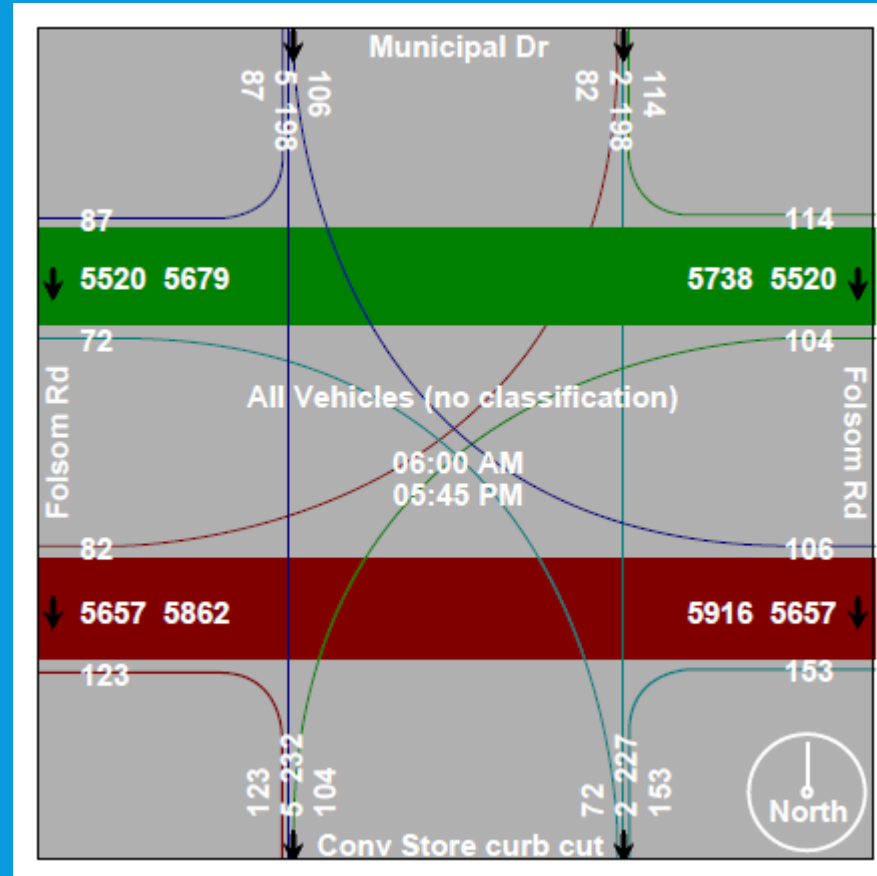
Speed

Turning Movement



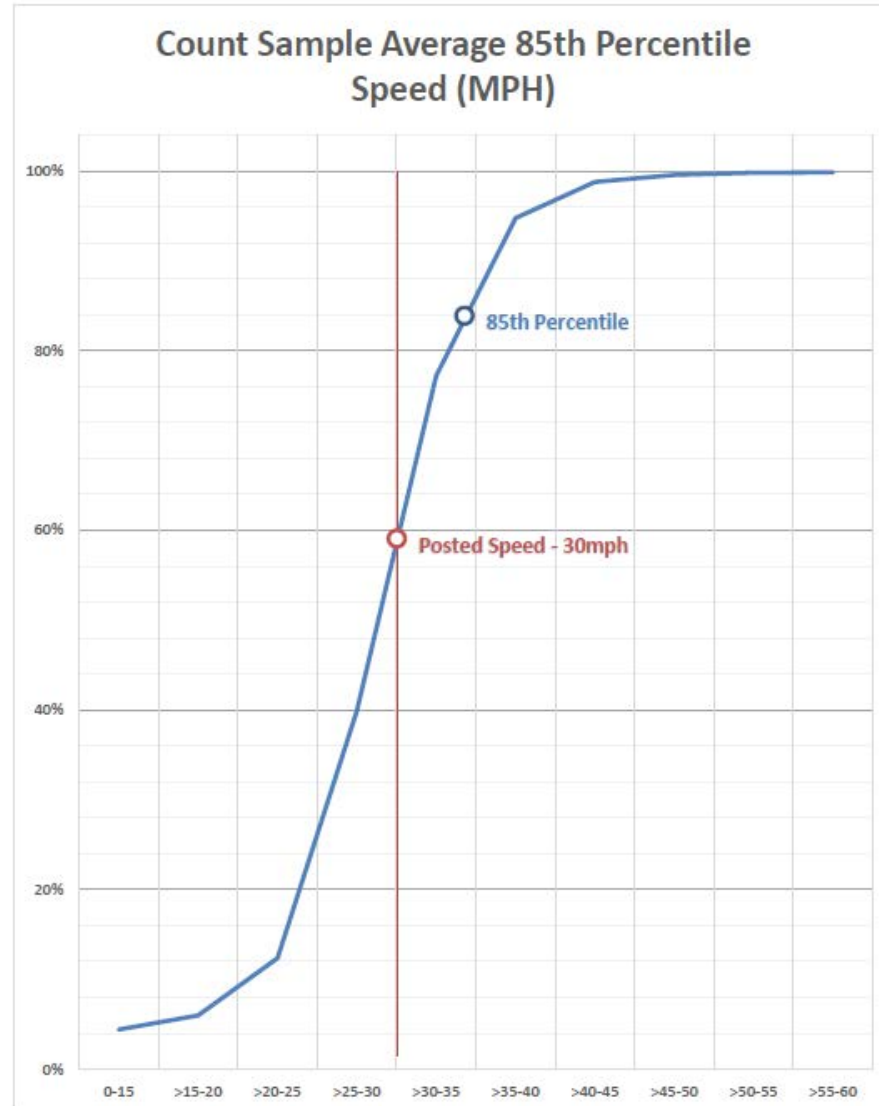
*Motion
Stills*

TURNING MOVEMENT

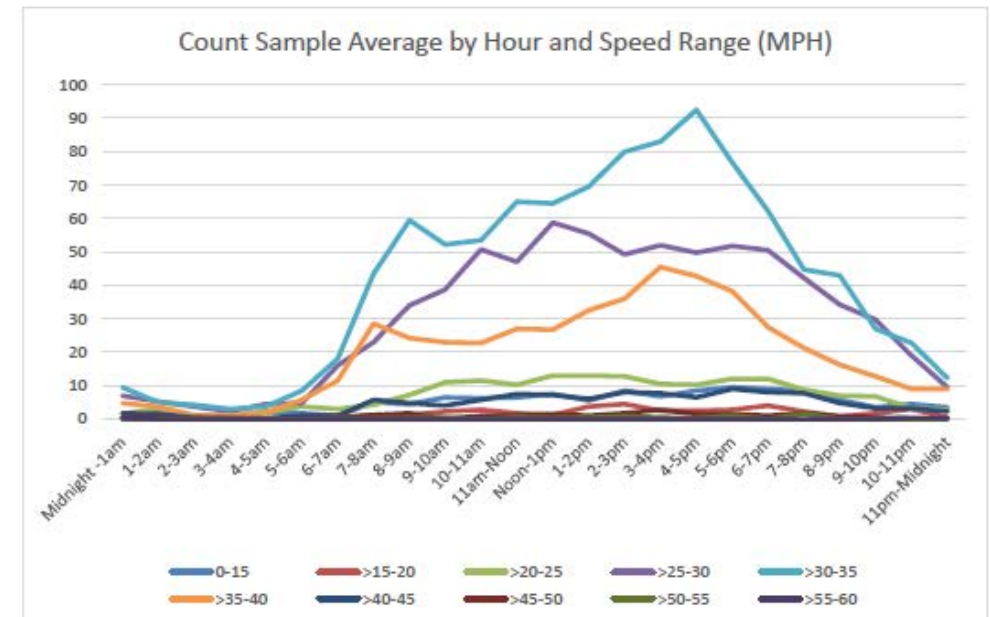
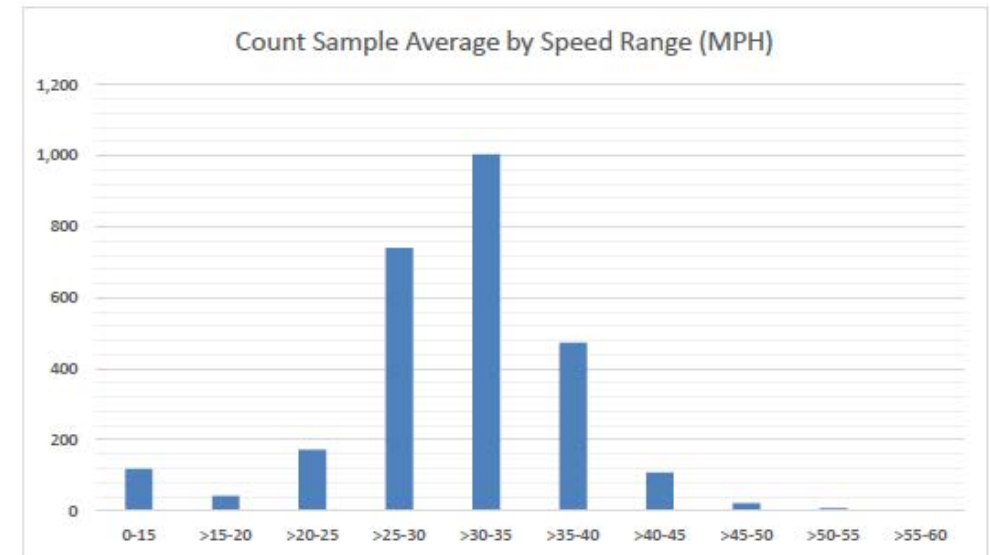


SPEED COUNT

Speed Count: Pine Street – North of Green Street

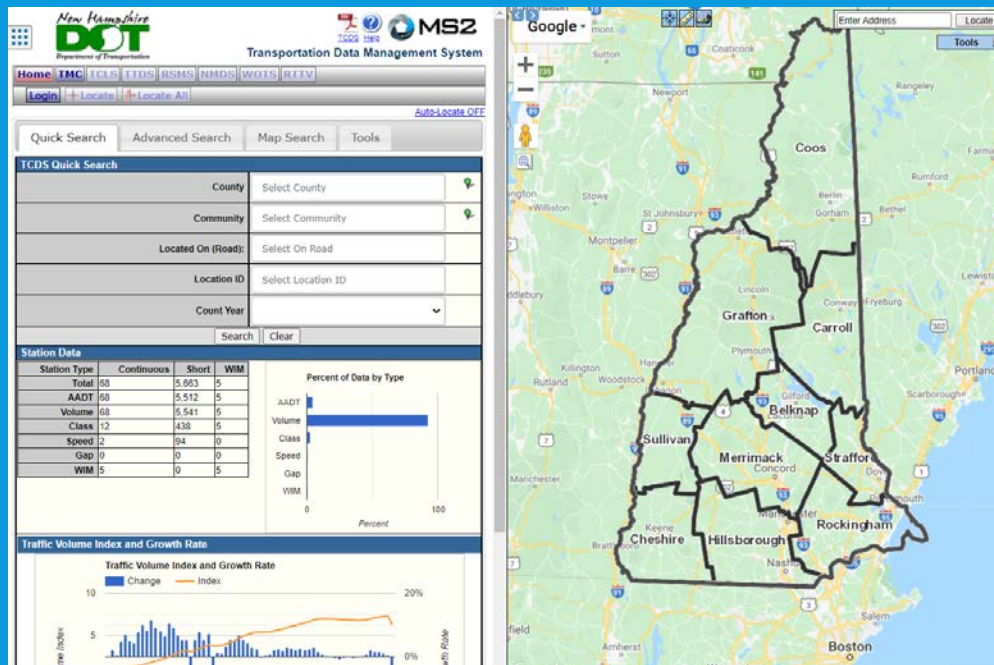


Speed Count: Pine Street – North of Green Street

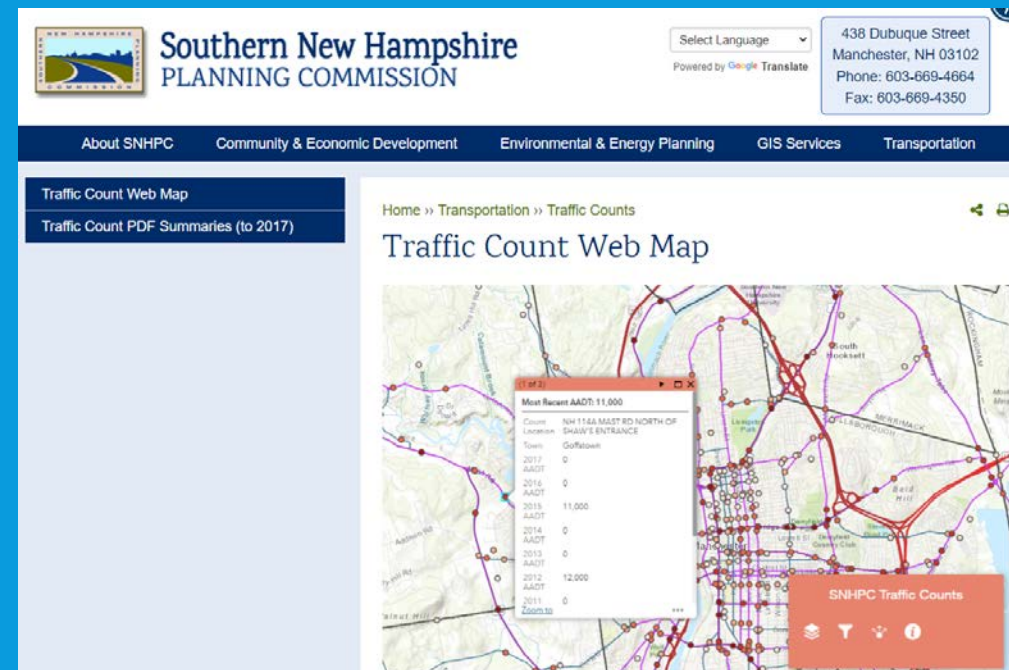


PUBLISHING 2021 DATA

NH DOT MS2 Viewer



SNHPC Traffic Count Viewer



QUESTIONS?



Monique Duchesne
mduchesne@snhpc.org