

Transportation Alternatives Program (TAP) Funding Round 4 (FY21-22)

SNHPC TAC Meeting March 18, 2021

James Vayo, AICP
Project Manager



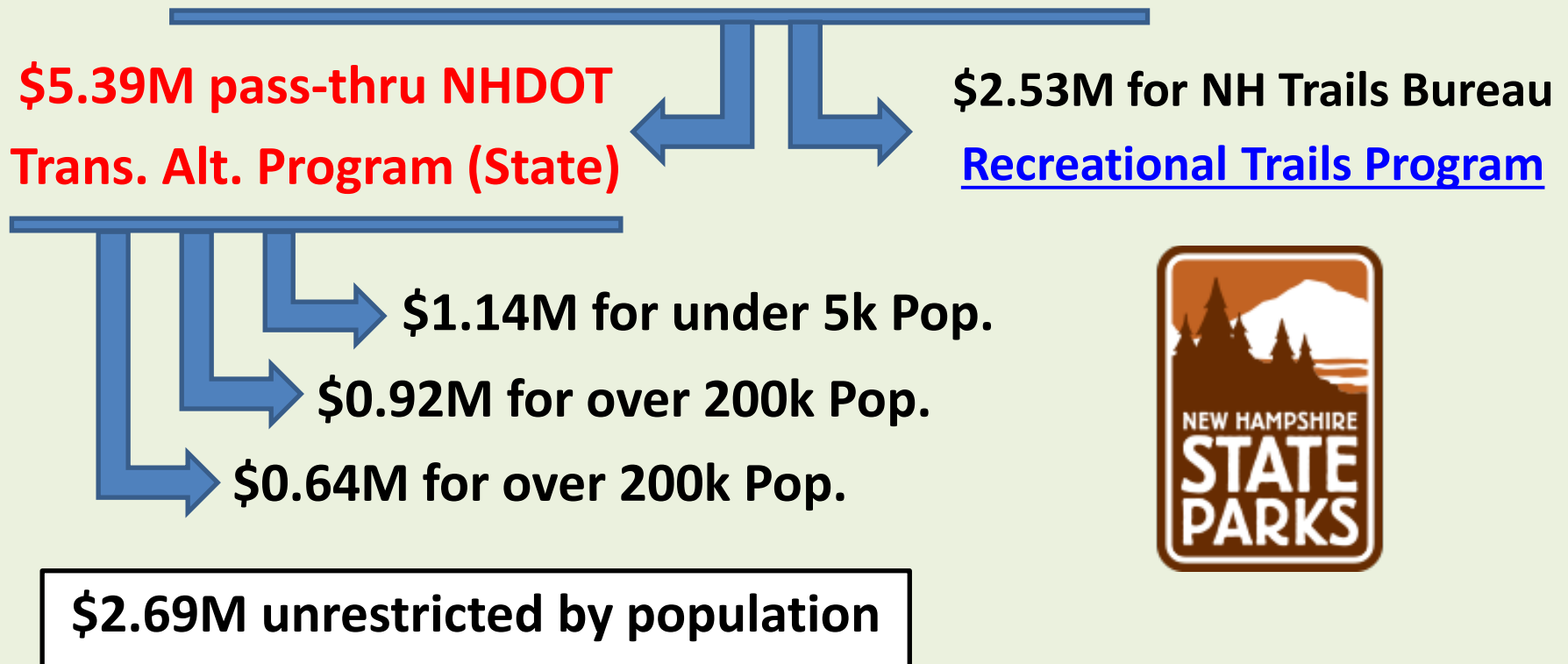
Transportation Alternatives Program (TAP)

Eligible Activities

- Eligible activities fall into four categories:
 - Construction, planning, & design of on/off road facilities for non-motorized transportation.
 - Construction, planning, & design of infrastructure for vulnerable transportation user groups.
 - Abandoned railroad ROW conversions to trails for non-motorized transportation.
 - Infrastructure devised from safe routes to school program activities. (Under §1404 of SAFETEA–LU)

Transportation Alternatives Program (TAP) Funding Round 4 (FY21-22)

- Federal Funding Available in TAP Round 4:
 - Total TAP Federal Funding is \$7.92M



Transportation Alternatives Program (TAP) Competitive Funding Program

- **NHDOT received 41 Letters of Intent from 40 potential applicants statewide:**
 - **Demand for TAP projects far greater than funds**
 - **Total LOI federal funding request is \$29.64M**
 - **Total available federal funding only \$5.39M**
 - **Of the 41 proposed TAP projects, as few as six may be selected for funding by NHDOT.**
 - **This is less than one project per RPC.**



SNHPC TAP DRAFT Timeline

- **February 5, 2021-** TAP Letters of Intent received from towns.
- **February 11, 2021-** TAC applications released by NHDOT.
- **FRIDAY MARCH 19, 2021- TAP APPLICATIONS ARE DUE.**
- **April 2021-** TAP Applications checked for eligibility by SNHPC staff and ranked by **TAP Evaluation Sub-committee.** This is followed by TAC recommendation and MPO approval of project ranking.
- **May 2021** – NHDOT scoring and final ranking submitted to NHDOT Commissioner.
- **June 2021** – Final list of TAP projects approved by NH DOT Commissioner for award.
- **August 2021** – Governor & Council approval of TAP funding award.



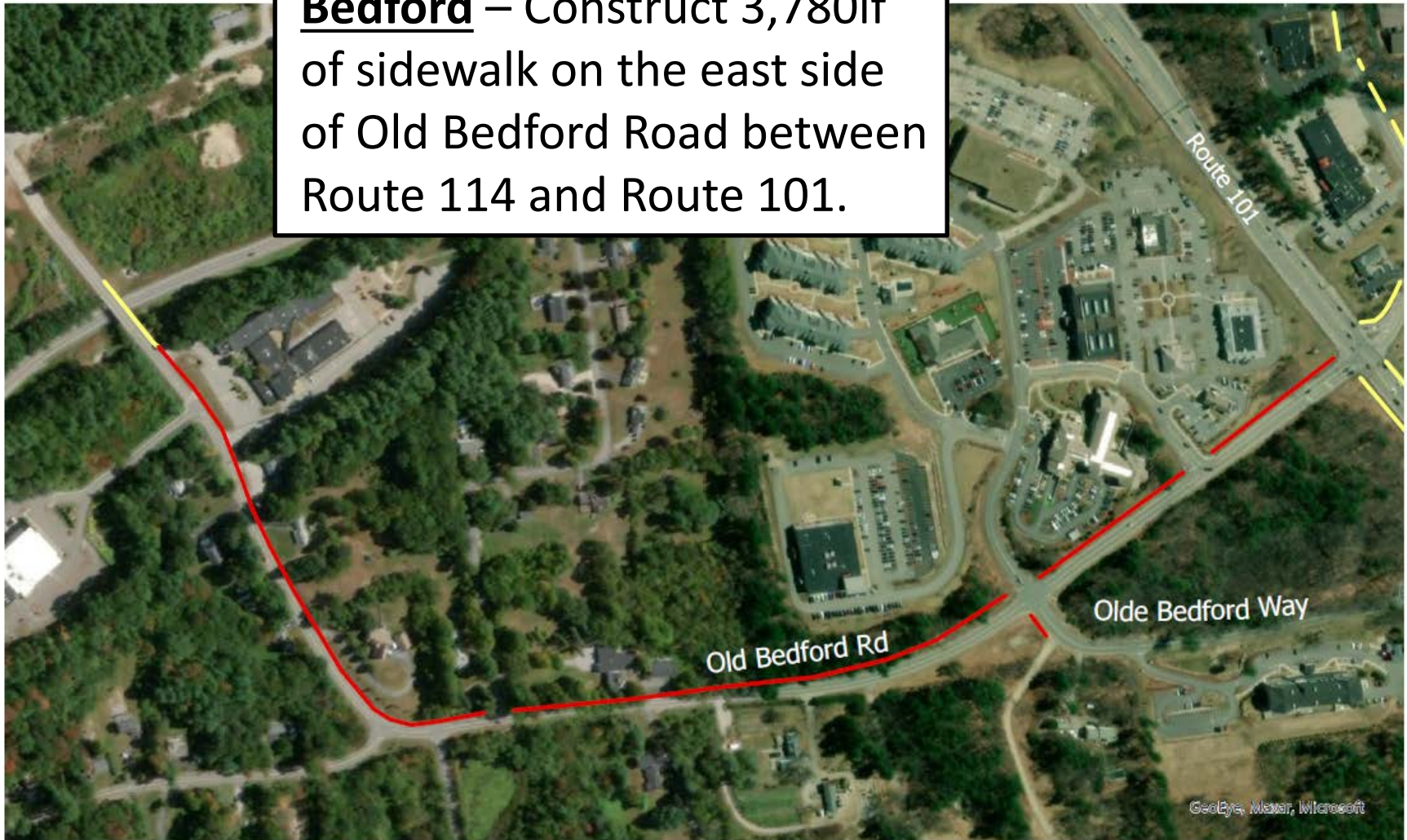
TAP Project Evaluation Process

- Letter of Intent to apply for TAP funding were received from the following towns:
 - Bedford
 - Derry
 - Goffstown
 - Manchester
 - New Boston
 - Windham
- **The projects, as described in the submitted Letters of Intent, are as follows:**



Review of TAP Letters of Intent for the SNHPC Region

Bedford – Construct 3,780lf of sidewalk on the east side of Old Bedford Road between Route 114 and Route 101.





Review of TAP Letters of Intent for the SNHPC Region

Town of Derry – Construct a 1,900lf extension of the Derry Rail Trail between Madden Road and the Londonderry town line.





Review of TAP Letters of Intent for the SNHPC Region

South Mast Street

From: Wallace Road
To: Park Lane

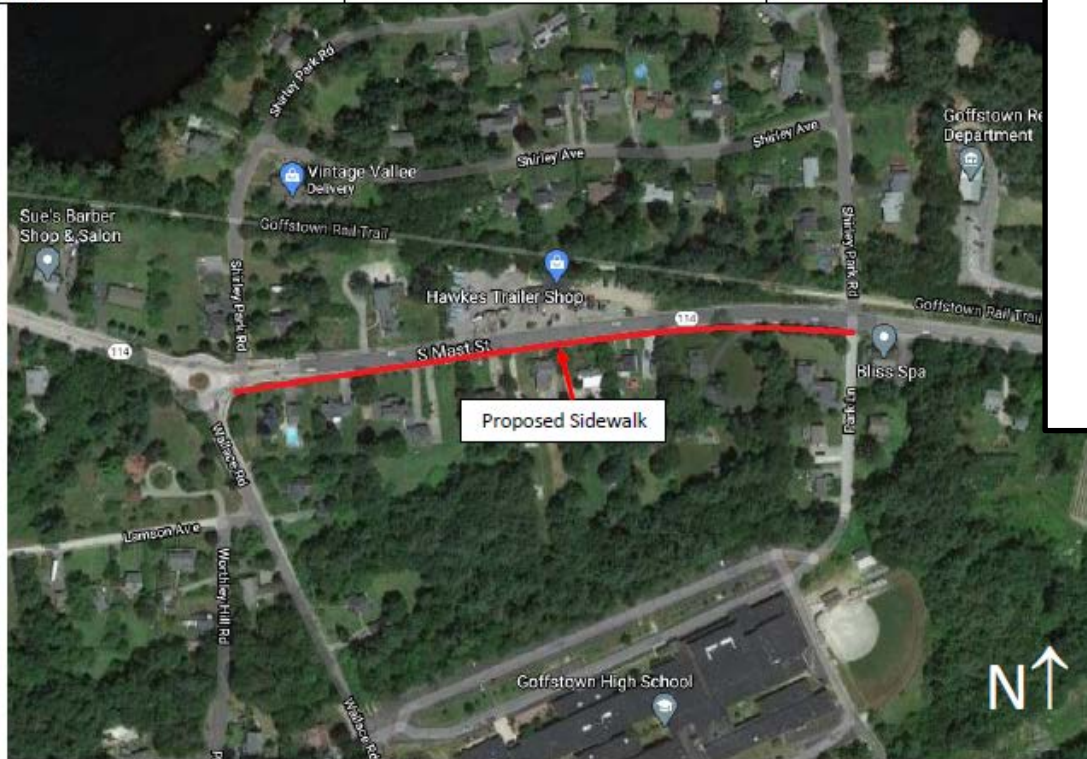
Length: 1,200 feet

Cost: \$165,600.00

*using estimate of \$138/LF as recom

Goffstown– Construct
6' wide sidewalk on
one side of the street
as follows:

- 1,200lf - S. Mast Rd.
- 4,350lf - Elm Street
- 2,800lf - Church St.
- 1,900lf - Daniel
Plummer Road





Review of TAP Letters of Intent for the SNHPC Region

Elm Street

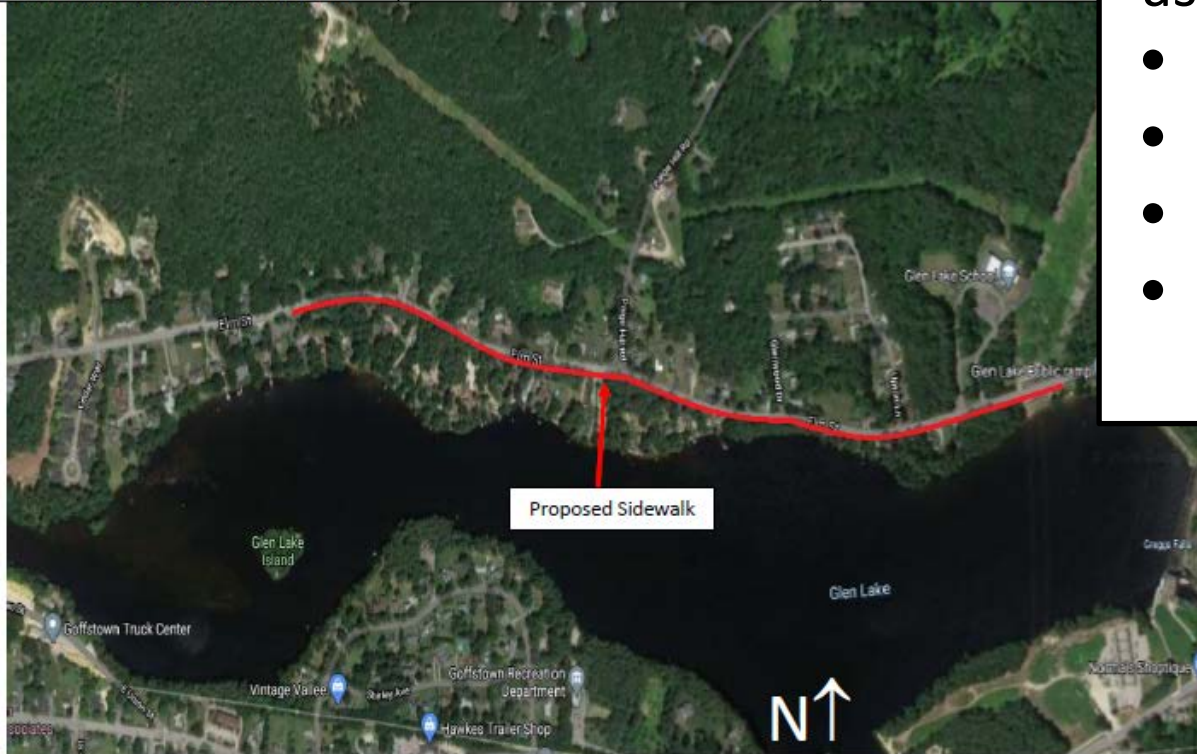
From: Existing Sidewalk (#122)

To: Glen Lake Boat Ramp/Swimming Area

Length: 4,350 feet

Cost: \$600,300.00

*using estimate of \$138/LF as recom



Goffstown– Construct
6' wide sidewalk on
one side of the street
as follows:

- 1,200lf - S. Mast Rd.
- 4,350lf - Elm Street
- 2,800lf - Church St.
- 1,900lf - Daniel
Plummer Road



Review of TAP Letters of Intent for the SNHPC Region

Church Street From: Main Street To: North Mast Street	Length: 2,800 feet	Cost: \$386,400.00 <small>*using estimate of \$138/LF as record</small>
--	--------------------	--



Goffstown– Construct 6' wide sidewalk on one side of the street as follows:

- 1,200lf - S. Mast Rd.
- 4,350lf - Elm Street
- 2,800lf - Church St.
- 1,900lf - Daniel Plummer Road

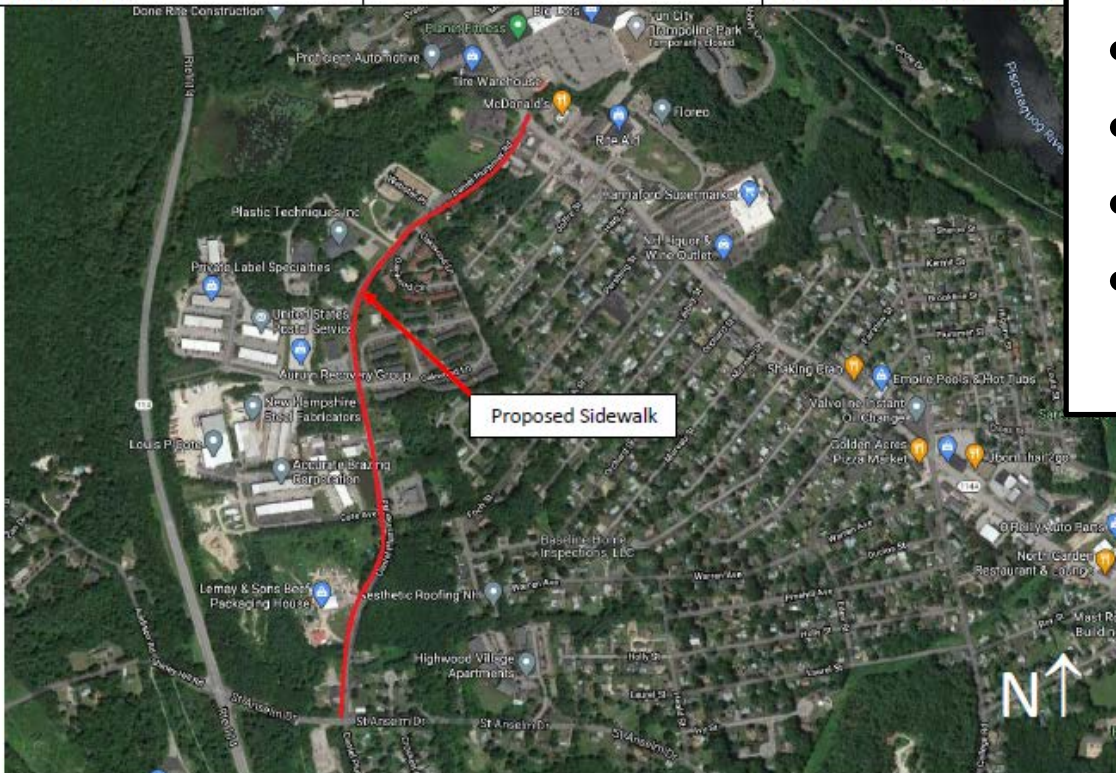


Review of TAP Letters of Intent for the SNHPC Region

<u>Daniel Plummer Road</u>	Length: 1,900 feet	Cost: \$262,200.00
From: Mast Road To: St. Anselm's Drive		*using estimate of \$138/LF as recomme

Goffstown– Construct
6' wide sidewalk on
one side of the street
as follows:

- 1,200lf - S. Mast Rd.
- 4,350lf - Elm Street
- 2,800lf - Church St.
- 1,900lf - Daniel
Plummer Road





Review of TAP Letters of Intent for the SNHPC Region

**City of
Manchester** –
Construct
sidewalks and
bicycle lanes on
Hooksett Road
and Union Street.

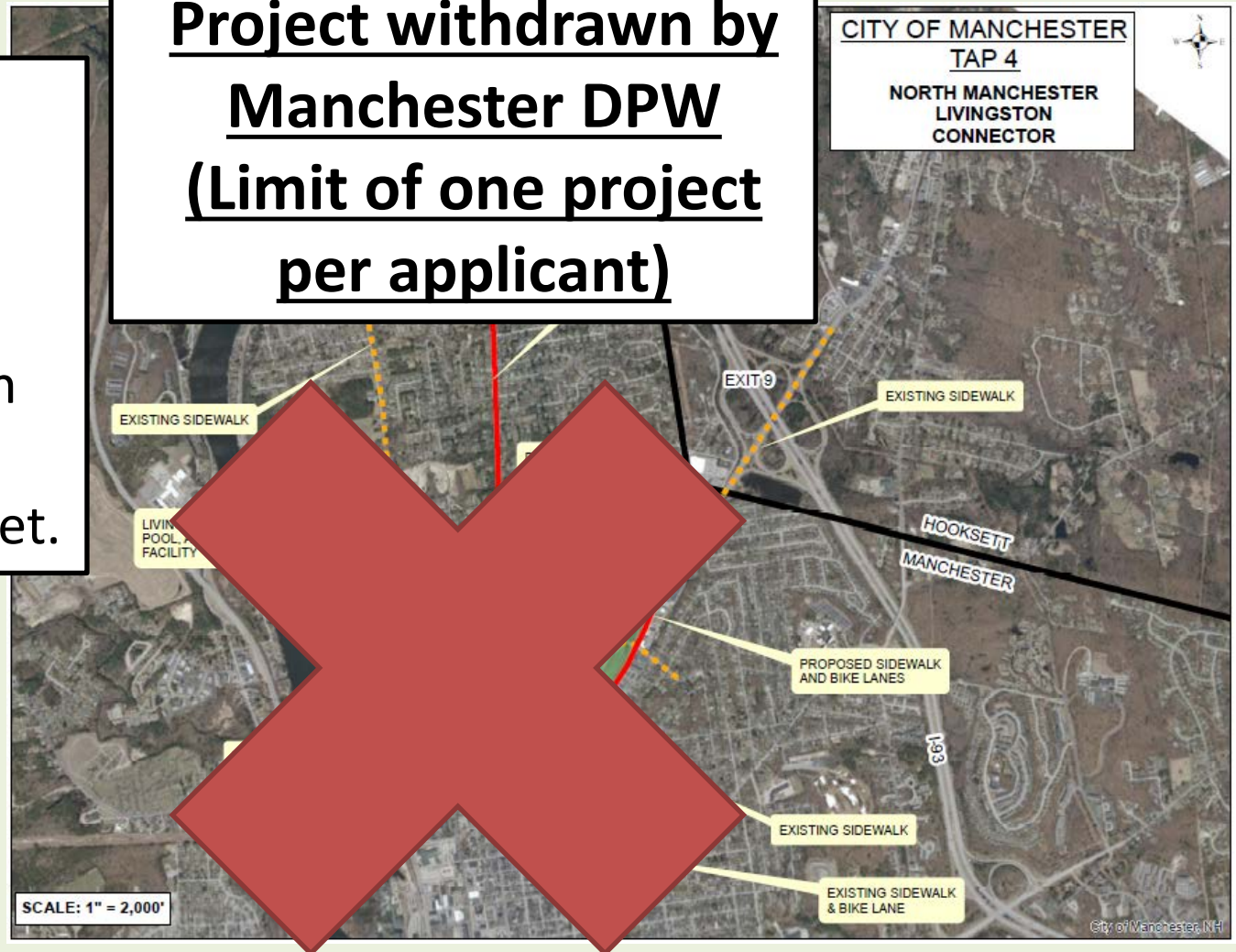




Review of TAP Letters of Intent for the SNHPC Region

City of
Manchester –
Construct
sidewalks and
bicycle lanes on
Hooksett Road
and Union Street.

Project withdrawn by
Manchester DPW
(Limit of one project
per applicant)



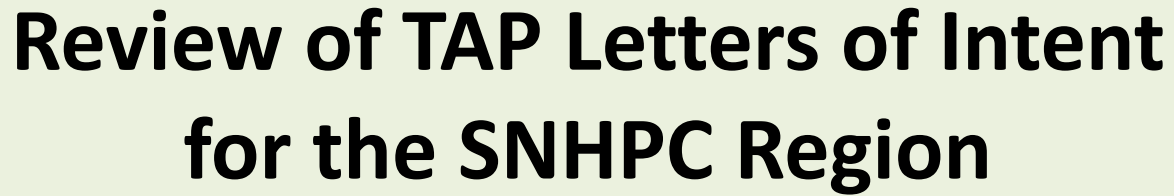


Review of TAP Letters of Intent for the SNHPC Region



City of Manchester

Construct a 4,800lf Multi-use Path adjacent to Canal Street between Granite Street and Brook Street.



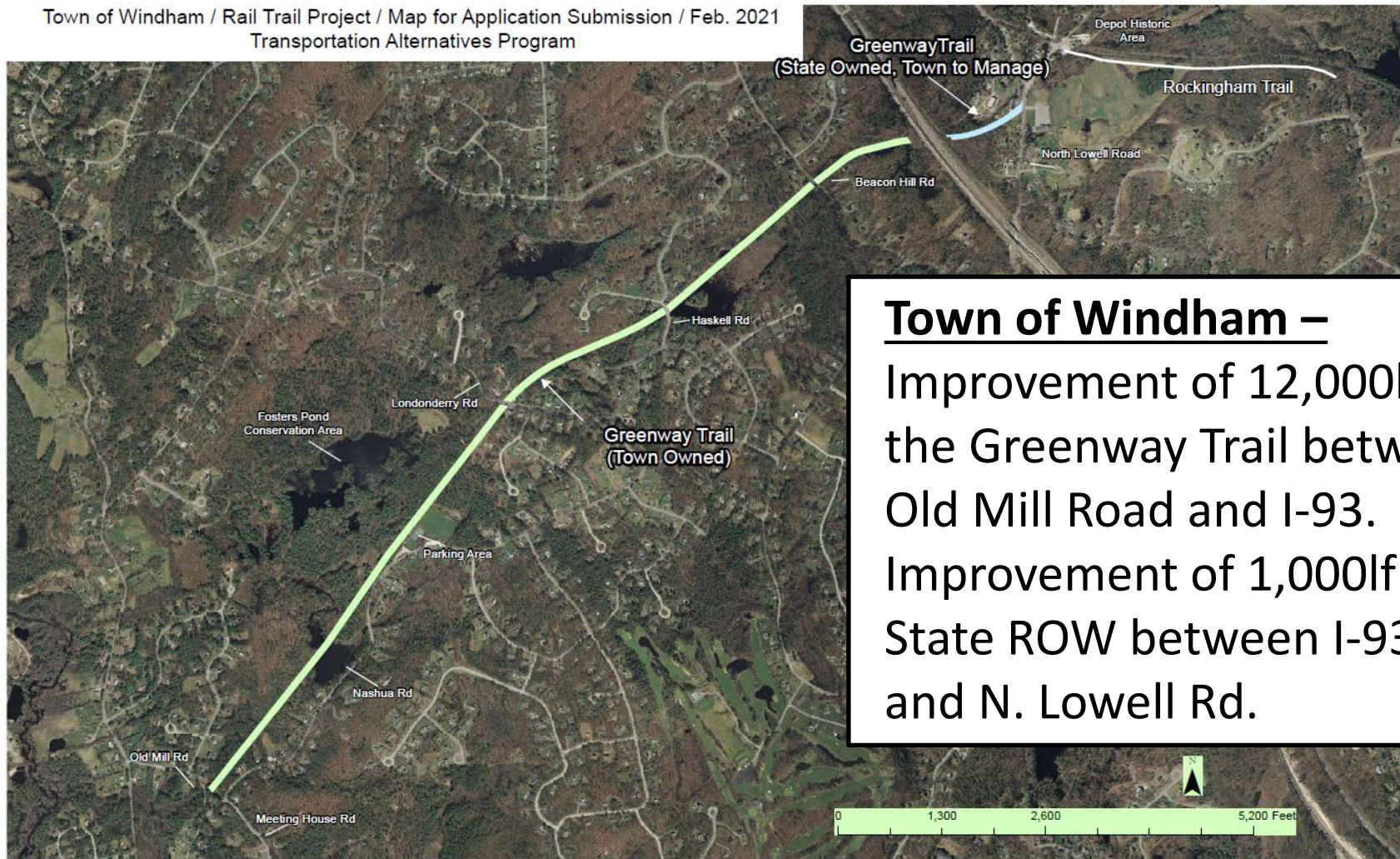
Construct a tunnel under Parker Road to connect Phase 2 of the New Boston Rail Trail to Phase 3.





Review of TAP Letters of Intent for the SNHPC Region

Town of Windham / Rail Trail Project / Map for Application Submission / Feb. 2021
Transportation Alternatives Program



Town of Windham –

Improvement of 12,000lf of
the Greenway Trail between
Old Mill Road and I-93.

Improvement of 1,000lf of
State ROW between I-93
and N. Lowell Rd.



SNHPC TAP Project Evaluation Process

- RECAP: Letters of Intent to apply for TAP funding were received from the following towns:
 - Bedford - Derry - Goffstown
 - Manchester - New Boston - Windham
- Traditionally, the TAP Evaluation Sub-committee is composed of TAC members who represent municipalities or agencies that did not submit TAP Letters of Intent.
- **SNHPC STAFF IS SEEKING 3-5 TAC MEMBERS TO VOLUNTEER FOR THE TAP APPLICATION EVALUATION SUBCOMMITTEE.**
 - Sub-committee to meet (virtually) between April 5th to 9th at a time that works for all volunteers. May take 2-4 hours.



SNHPC TAP Evaluation Criteria (Seeking TAC Recommendation)

TAP FUNDING ROUND 4 PROJECT EVALUATION CRITERIA

			(From Round 3)
Category		Description	Weighting
Potential for Success		What are the factors that will indicate a project application's likeliness to succeed?	37%
Sub-Criteria (Potential for Success)	Project Readiness & Support	Is the project part of any local and regional plans, and has it been endorsed by local and regional bodies/advocacy groups? Does the project have support amongst diverse constituents (e.g. Selectboard/Council, Planning Board, Conservation Commission, Bike/Ped/Trail Advocacy Groups)?	6%
	Financial Readiness	Is there a written commitment to bring this project forward for local match funding approval at Town Meeting, through Capital Reserve funds, or from inclusion in a Capital Improvement Plan? Are any local/private funds already raised/appropriated and dedicated to the project?	18%
	Feasibility	Are there any historical, cultural, environmental, maintenance, or other issues that may impact the project's ability to succeed?	13%
Safety		To what extent will the project improve safety conditions and/or reduce the perception of user stress as a result of the project being implemented?	24%
Sub-Criteria (Safety)	Level of Stress Analysis	What is the current level of stress versus the predicted future level of stress (when the proposed project is completed)?	10%
	Improve Safety Conditions	What specific safety improvements will be made as part of the project, and how will these improvements provide a safety benefit as compared to current conditions? Does the project implement the recommendations of any objective, safety-related study (e.g. Road Safety Audit, Corridor Study, etc)?	14%
Project Connectivity		Does the project fill a vital gap in an existing infrastructure network? Does the project provide a facility that links important origins and destinations together?	24%
Socioeconomic Benefits		To what degree does the project provide opportunities to enhance the quality of life and provide transportation options for underserved communities (e.g. minority populations, low income populations, limited-english populations, etc)?	10%
Multi-Modal Connectivity		To what extent does the project facilitate connections between multiple modes of transportation (e.g. walking, biking, transit, rail, air, etc)?	5%



Questions?