



**SNHPC**

# DOCUMENTING PEDESTRIAN FACILITIES

## USING NEW HAMPSHIRE'S SADES PROTOCOL



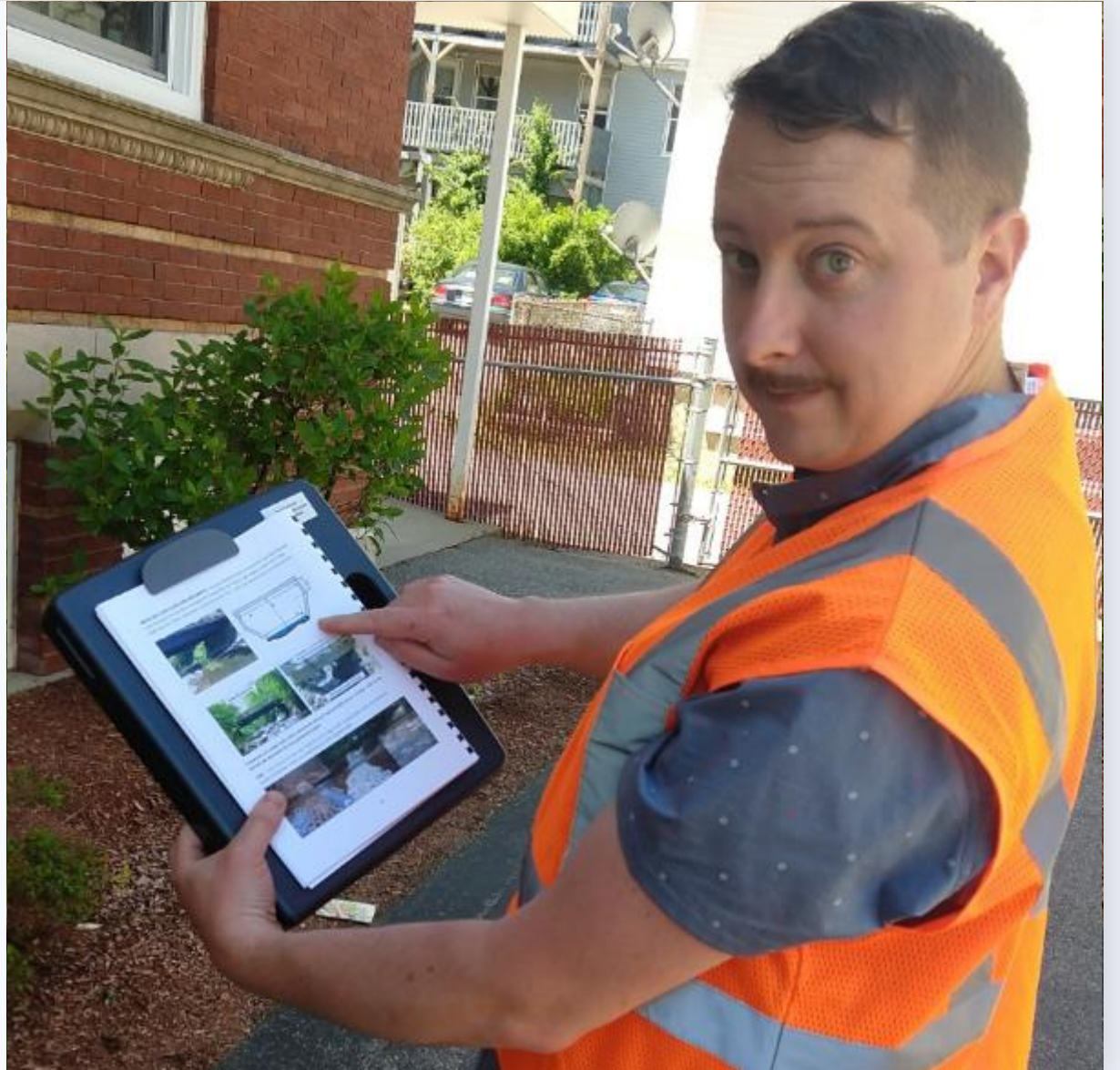
New Hampshire  
Technology Transfer Center

# WHAT IS THE STATEWIDE ASSET DATA EXCHANGE SYSTEM (SADES)...

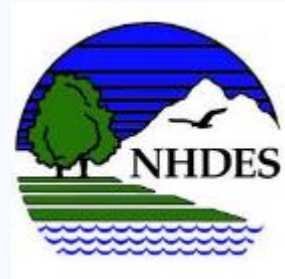
"SADES establishes a uniform transportation inventory of assets including a maintainable condition assessment process which use useful for many state and local agencies.

Its unique approach to statewide asset management efficiently utilizes modern technology and joins efforts for the common good of accurate and sustainable data collection."

- Source: [www.nhsades.com/about](http://www.nhsades.com/about)



# SADES IS A PARTNERSHIP OF



New Hampshire  
Technology Transfer Center



SADES IS  
MANAGED BY

THE **UNH**  
TECHNOLOGY  
TRANSFER  
CENTER (**T2**)



New Hampshire  
Technology Transfer Center



SADES IS  
MANAGED BY

THE **UNH**  
TECHNOLOGY  
TRANSFER  
CENTER (**T2**)

Chris Dowd  
SADES Manager

Technology Transfer Center  
33 Academic Way  
Durham, NH 03824  
[chris@nhsades.com](mailto:chris@nhsades.com)

Office: (603) 862-5489



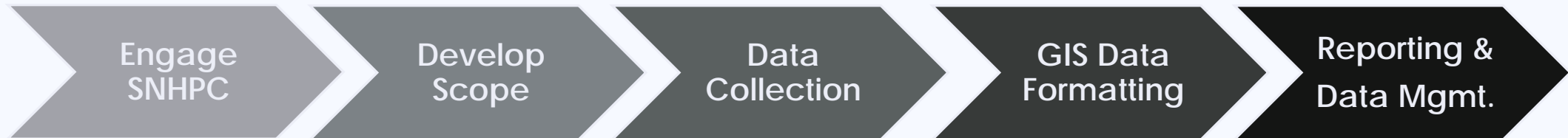
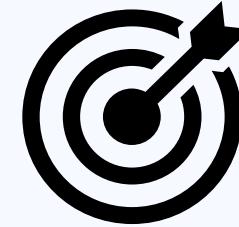
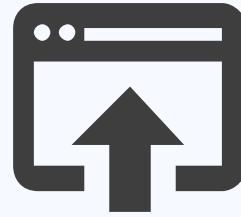
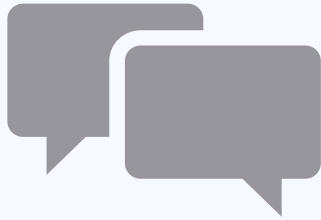


THE PLANNING  
COMMISSION CAN  
AID ITS MEMBERS  
THROUGH **SADES**

1. Software and Hardware
2. Data Collection via Protocol
3. Database Management
4. Data Access and Sharing
5. Data Analysis and Reporting



# SADES PROJECT PATH



Member community approaches SNHPC with a request for field data collection.

SNHPC works with member community to define a scope of work for data collection.

SNHPC staff collect field data according to SADES protocol.

Data collected in GIS is formatted for use by member community (i.e. for planning, maintenance)

SNHPC and Member community review results and determine if job is complete or if additional scope of work is needed.

## SADES DATA COLLECTION PRODUCTS CURRENTLY AVAILABLE THROUGH SOUTHERN NEW HAMPSHIRE PLANNING COMMISSION

STEAM CROSSINGS	ROAD SURFACE MANAGEMENT	PEDESTRIAN FACILITIES	CLOSED DRAINAGE SYSTEMS
Available Since 2014	Available Since 2015	Available Since 2015	Available Since 2018
Over 13,000 Assessments	1,584 Miles of Locally Assessed Roads	4,000 Sidewalks & 2,300 Crosswalks	More Than 40k Pipes Assessed



## SADES DATA COLLECTION PRODUCTS CURRENTLY AVAILABLE THROUGH SOUTHERN NEW HAMPSHIRE PLANNING COMMISSION

STEAM CROSSINGS	ROAD SURFACE MANAGEMENT	PEDESTRIAN FACILITIES	CLOSED DRAINAGE SYSTEMS
Available Since 2014	Available Since 2015	Available Since 2015	Available Since 2018
Over 13,000 Assessments	1,584 Miles of Locally Assessed Roads	4,000 Sidewalks & 2,300 Crosswalks	More Than 40k Pipes Assessed

# WHAT IS A PEDESTRIAN FACILITY?

Sidewalks

Walkways and Trails  
(Aka Multi-Use Path)

Curb Ramps

Crosswalks

Signal Controls  
(crosswalk buttons)

Street Furnishings

Traffic Calming  
(curb extensions)



# THE IMPORTANCE OF PLANNING FOR PEDESTRIANS

## WHY IS IT IMPORTANT?

All travel modes and users are fundamental

Provision of safe means for pedestrian travel

Improve mode split of the region's trips

Reduce reliance on automobiles

Increased walkability promotes transit use

Pedestrian friendly property in high demand

Environmental, health, and equity benefits

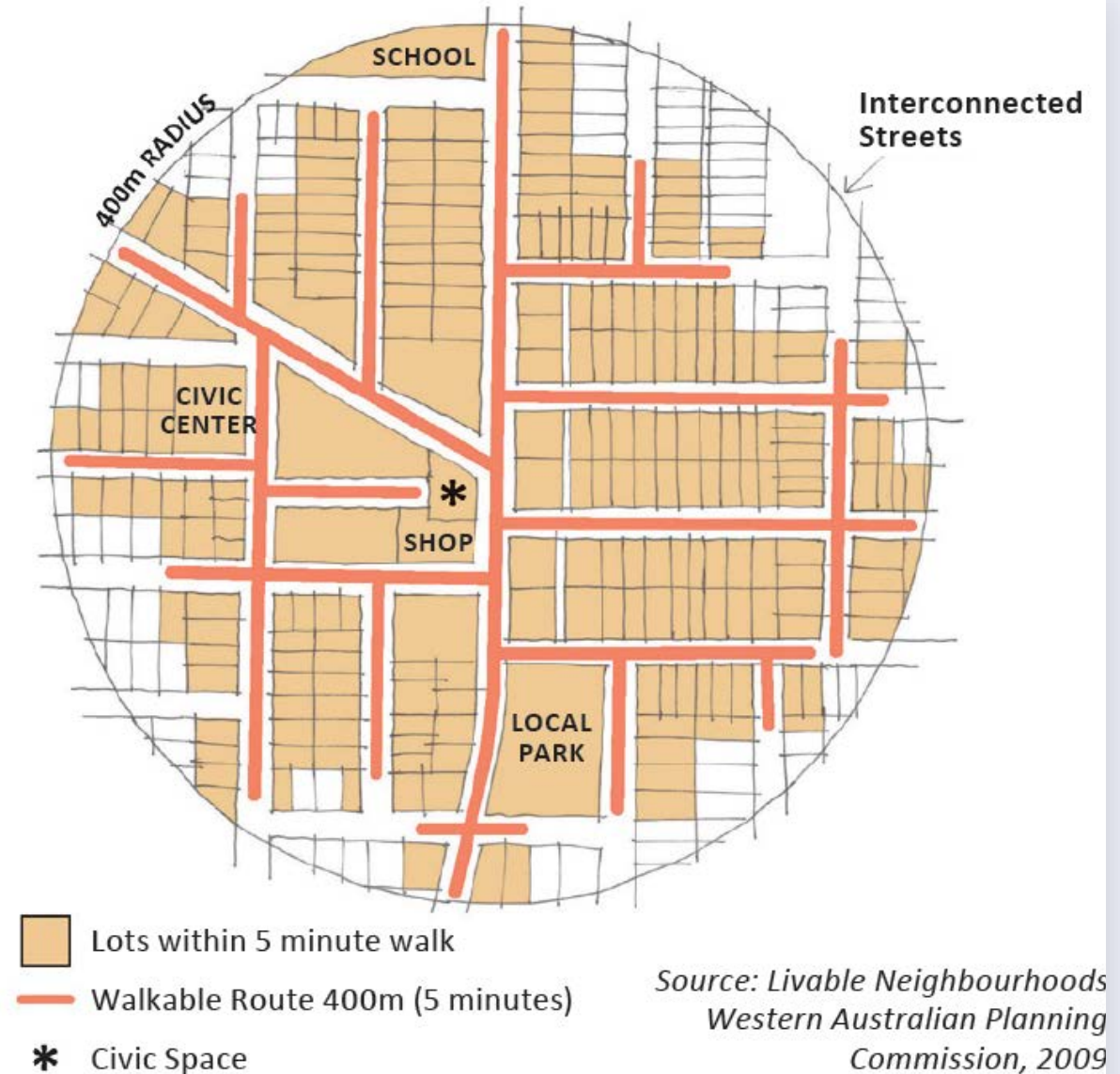
## HOW CAN THIS DATA BE USED?

To support localized walkability audits

Document existing conditions for local or regional walk-shed analysis

Ease and conformity of asset management

Facilitate Inter-Agency Coordination





# THREE CATEGORIES OF PEDESTRIAN INFRASTRUCTURE



This Photo by Unknown Author is licensed under [CC BY-SA](#)

## SIDEWALKS



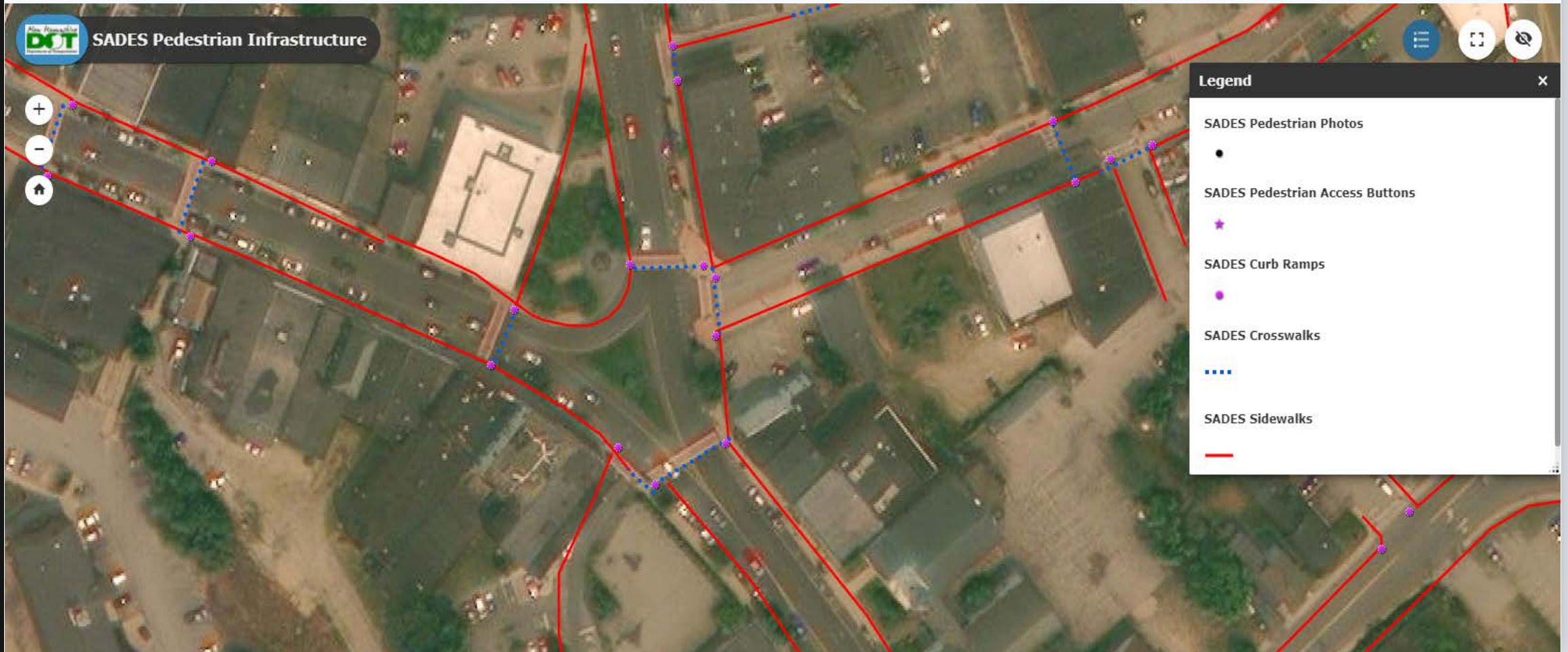
This Photo by Unknown Author is licensed under [CC BY-NC](#)

## CURB RAMPS



## CROSSWALKS

# CREATING DATA IN SADES: SEGMENTS AND POINTS





## SIDEWALK ATTRIBUTES

- Surface Material
- Condition
- Curbing
- Buffers
- Obstructions
- Width & Slope (ADA)





# CURB RAMP ATTRIBUTES

- Ramp Type
- Material
- Condition
- Detectable Warnings
- Crosswalk Alignment
- Width and Slope (ADA)



[This Photo](#) by Unknown Author is licensed under [CC BY](#)

# CROSSWALK ATTRIBUTES

- Line & Paint Type
- Paint Condition
- Calming Features
- Traffic Control Devices
- Pedestrian Signage
- Width and Slope (ADA)



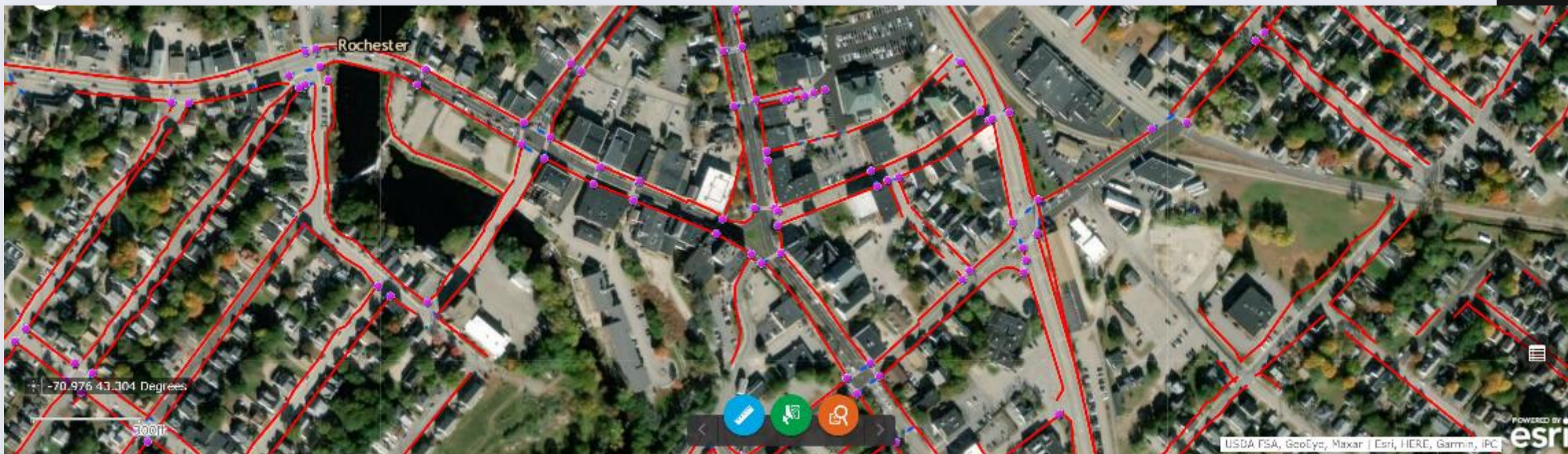
[This Photo](#) by Unknown Author is licensed under [CC BY-SA](#)

# SNHPC SEEKS A MUNICIPAL PARTNER FOR A PILOT PROJECT

SNHPC would collect data in a community which has an interest in using such an inventory.







# Questions?

Contact **James Vayo**  
Project Manager, SNHPC



**EMAIL**  
[JVAYO@SNHPC.ORG](mailto:JVAYO@SNHPC.ORG)



**PHONE**  
(603) 669-4664