

PATHWAYS TO PLAY

PROJECT INTRODUCTION



NEW
HAMPSHIRE
CHILDREN'S
HEALTH
FOUNDATION

FEBRUARY 17TH, 2022

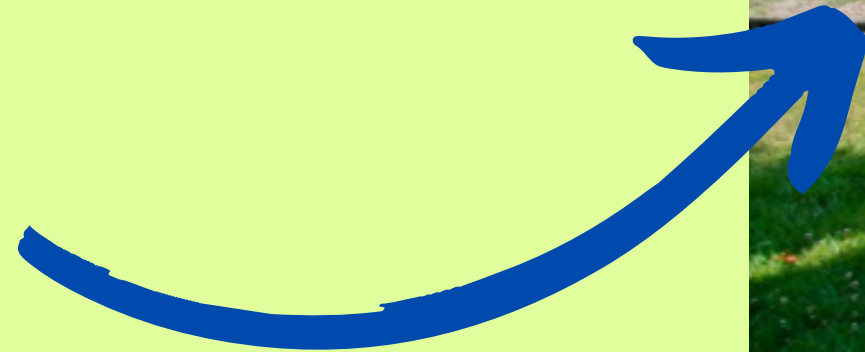
TAC



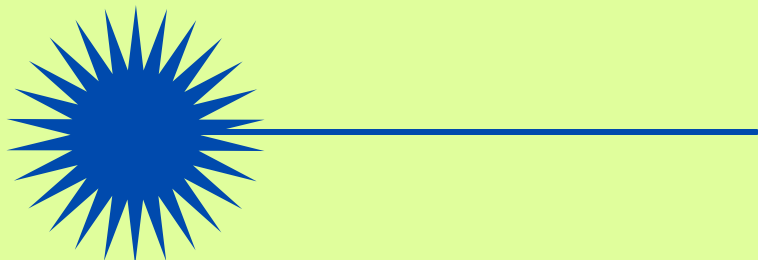
OVERVIEW

FUNDED BY NEW HAMPSHIRE
CHILDRENS HEALTH
FOUNDATION

INSPIRED BY SUCCESS OF
STRAFFORD RPC'S RECENT
PROJECT



Pathways to Play:
A Roadmap to Active Recreation
2019 Somersworth Pilot Project Report



NHCHF PRIORITY

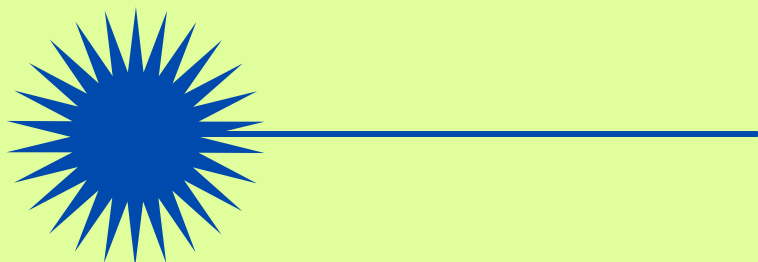


**PREVENT CHILDHOOD
OBESITY IN CHILDREN UP TO
AGE 5**

**BUILD SUPPORT FOR STATE &
LOCAL POLICIES & PRACTICES
TO PREVENT CHILDHOOD
OBESITY**

PROJECT OUTCOMES

- **Communities will have improved data and maps they can use to promote recreation opportunities across the region.**
- **Increase base knowledge and awareness in the region about local and regional recreational facilities and transportation infrastructure gaps.**
- **Municipalities and transit organizations will better understand barriers to accessing recreational opportunities.**



TIMELINE

JAN '22

- ORGANIZE STAKEHOLDERS
- MAPPING & GIS

MARCH '22

- RESIDENT SURVEYS

OCT '22

- COMMUNITY OUTREACH

MAY '23

- COMMUNITY PILOT PROGRAM



A topographic map of the Merrimack Valley region, showing the Merrimack River, surrounding towns like Weare, Hillsborough, and Hooksett, and various geographical features like the Merrimack Hills and Chestnut Hill. The map is overlaid with a GIS layer consisting of numerous blue and red circular markers. A large blue banner with yellow text is positioned in the upper left, and a larger blue banner with yellow text is on the right side.

DELIVERABLES

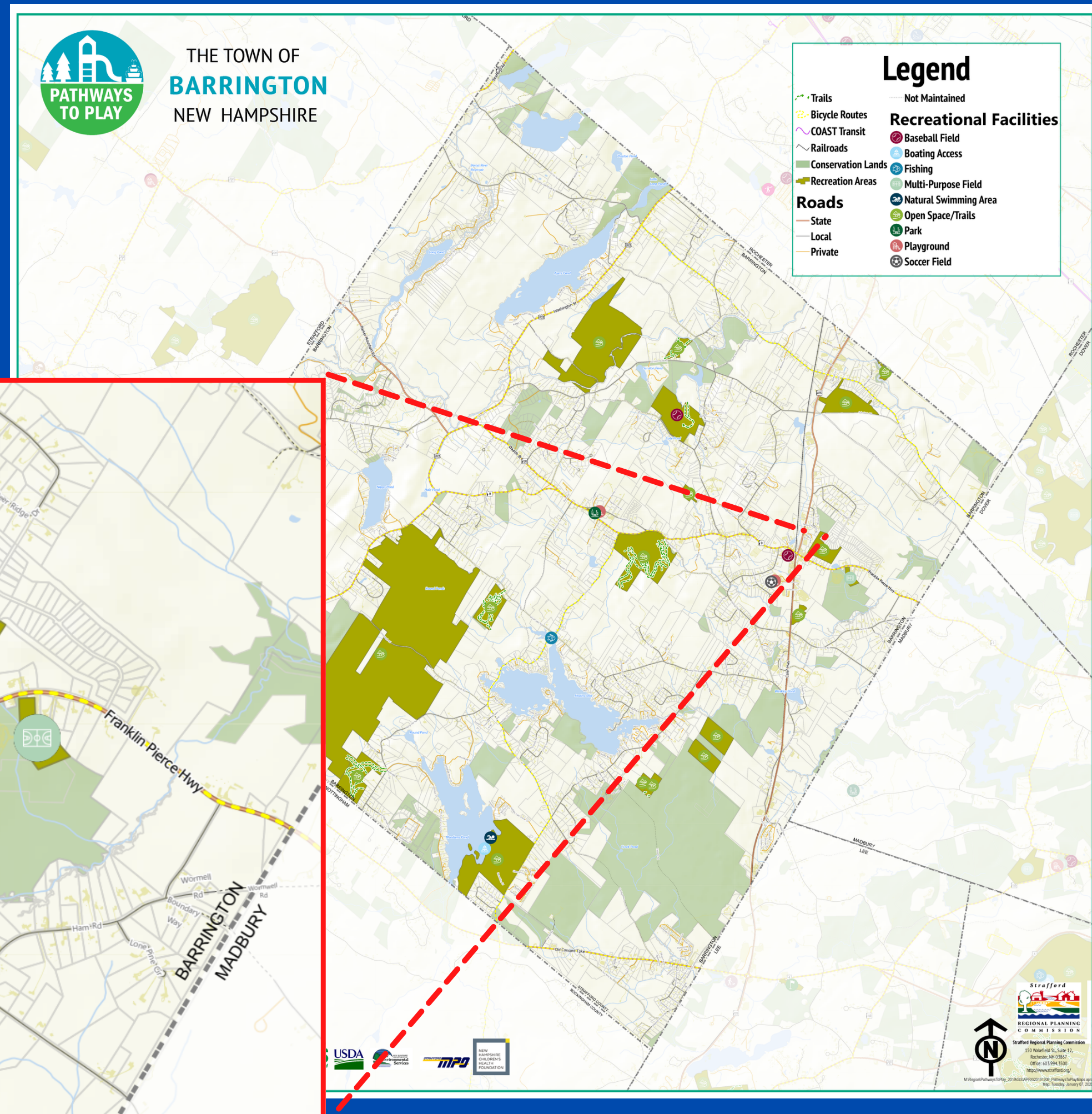
GIS LAYER

UPDATED AND DETAILED GIS DATA LAYER

REGIONAL ONLINE GIS MAP

DELIVERABLES

MAPS

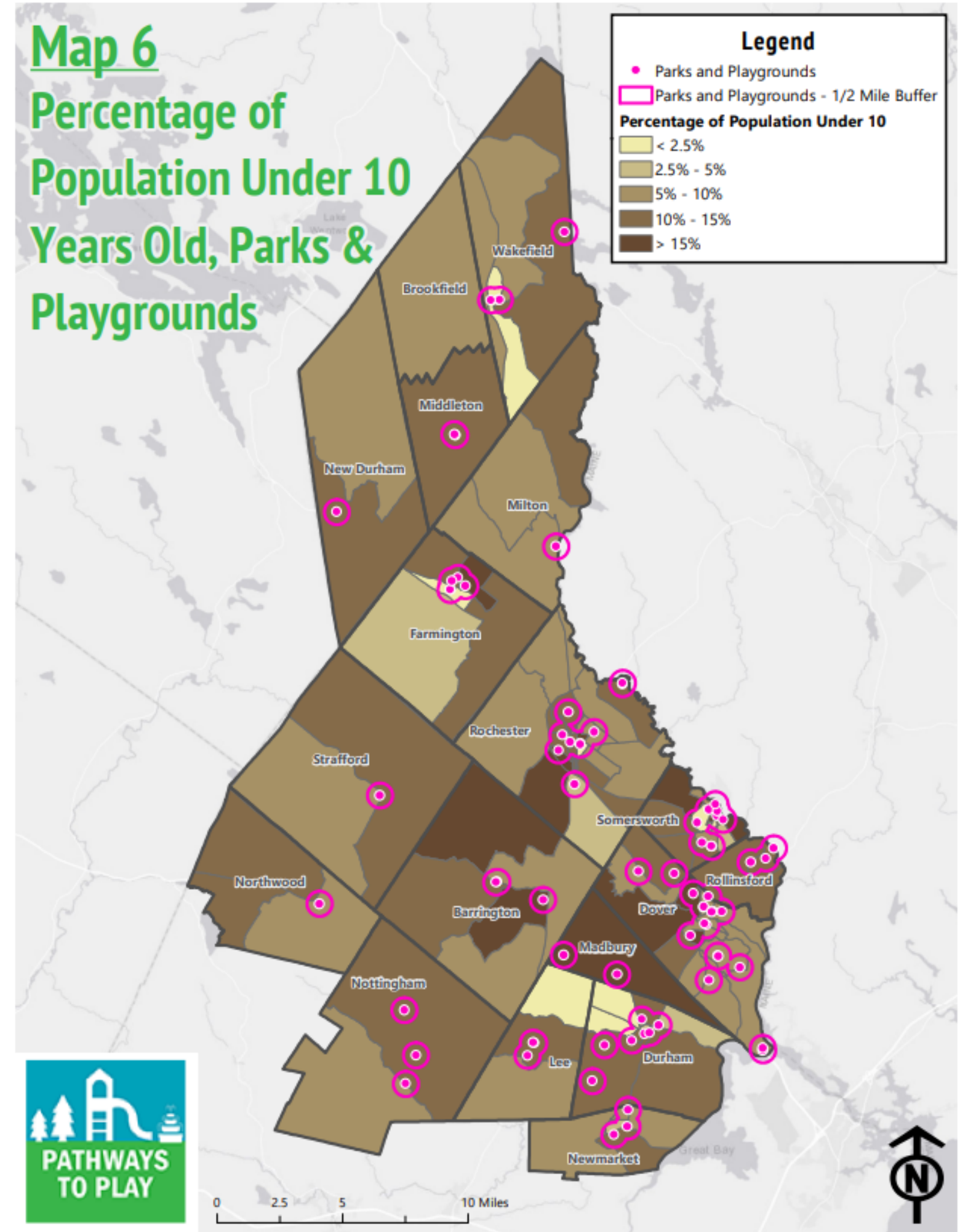


DELIVERABLES

GIS REPORT

Report of access to recreation facilities detailing accessibility by socioeconomic indicators and proximity to transportation infrastructure

Map 6 Percentage of Population Under 10 Years Old, Parks & Playgrounds



DELIVERABLES

PILOT PROJECT



JOIN THE STAKEHOLDER GROUP

- ☀ REPRESENT YOUR COMMUNITY
- ☀ ENSURE MEANINGFUL INPUT
& DIRECTION
- ☀ HELP CHOOSE THE PILOT
PROJECT COMMUNITY



CONTACT US



CAMERON PROLMAN, REGIONAL PLANNER
CPROLMAN@SNHPC.ORG



TAMMY ZAMOYSKI, REGIONAL PLANNER
TZAMOYSKI@SNHPC.ORG

603-669-4664



SNHPC