

Southern New Hampshire Planning Commission



Pathways

TO PLAY



SNHPC

NEW
HAMPSHIRE
CHILDREN'S
HEALTH
FOUNDATION

PROJECT UPDATE FOR TAC

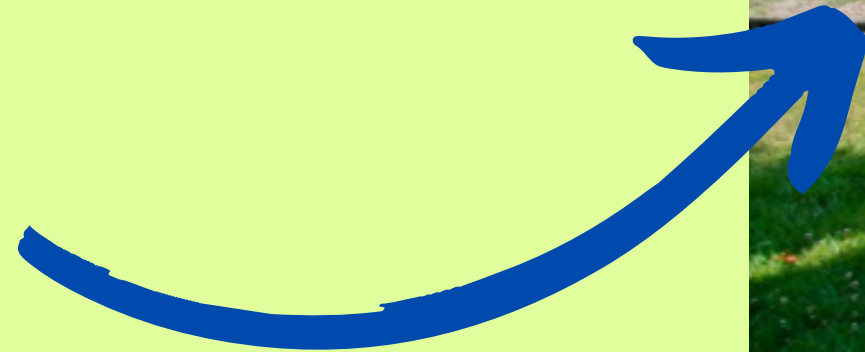
NOVEMBER 17TH, 2022



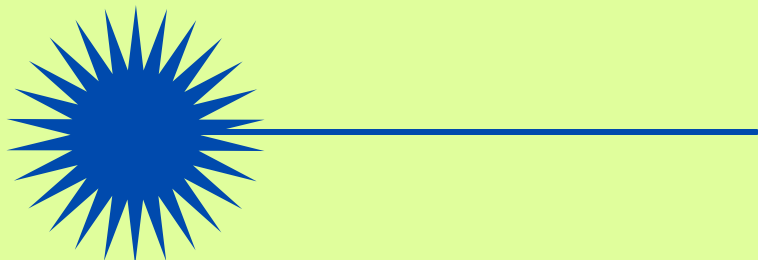
OVERVIEW

FUNDED BY NEW HAMPSHIRE
CHILDRENS HEALTH
FOUNDATION

INSPIRED BY SUCCESS OF
STRAFFORD RPC'S RECENT
PROJECT



Pathways to Play:
A Roadmap to Active Recreation
2019 Somersworth Pilot Project Report



PROJECT GOALS



PREVENT CHILDHOOD
OBESITY IN THE SNHPC
REGION

ASSESS BARRIERS TO
RECREATION

PROVIDE COMMUNITIES WITH
TOOLS TO PROMOTE
RECREATIONAL FACILITIES

ASSIST ONE COMMUNITY WITH
PILOT PROJECT

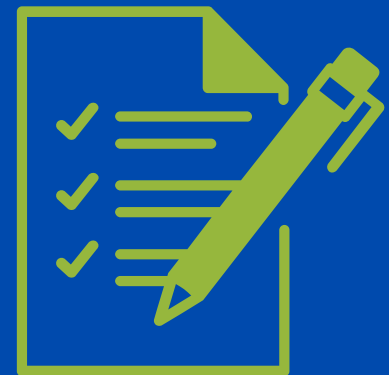
PROJECT DELIVERABLES



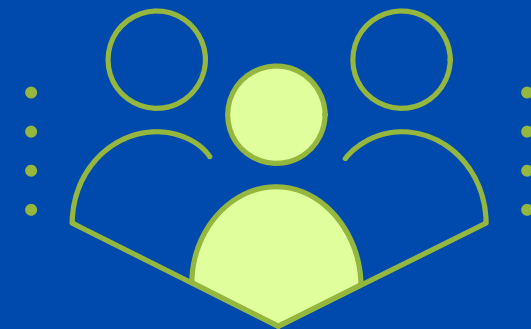
1 REGIONAL RECREATION
ASSET GIS LAYER



MAP FOR EACH
SNHPC COMMUNITY



RESIDENT SURVEY



COMMUNITY PILOT
PROGRAM

TIMELINE

JAN '22

- ORGANIZE STAKEHOLDERS
- MAPPING & GIS

MARCH '22

- RESIDENT SURVEYS

OCT '22

- COMMUNITY OUTREACH

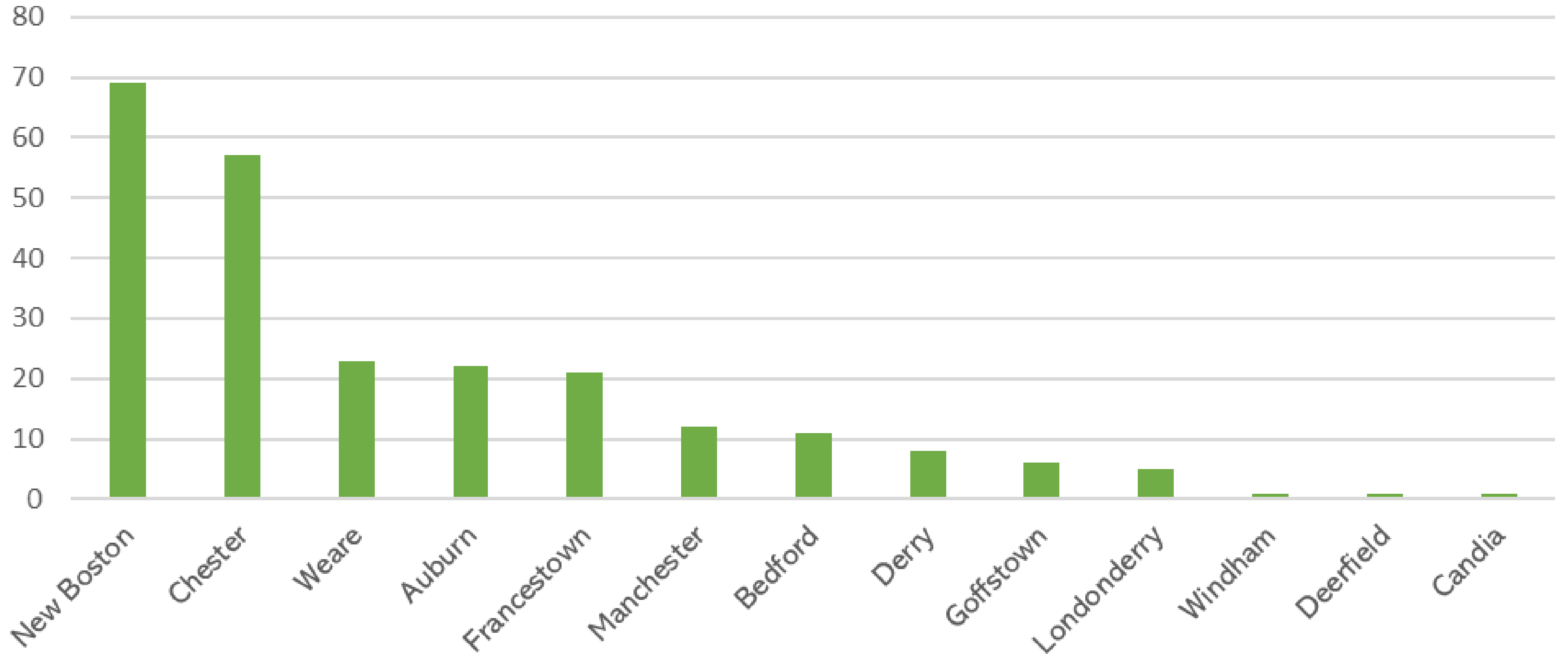
MAY '23

- COMMUNITY PILOT PROGRAM



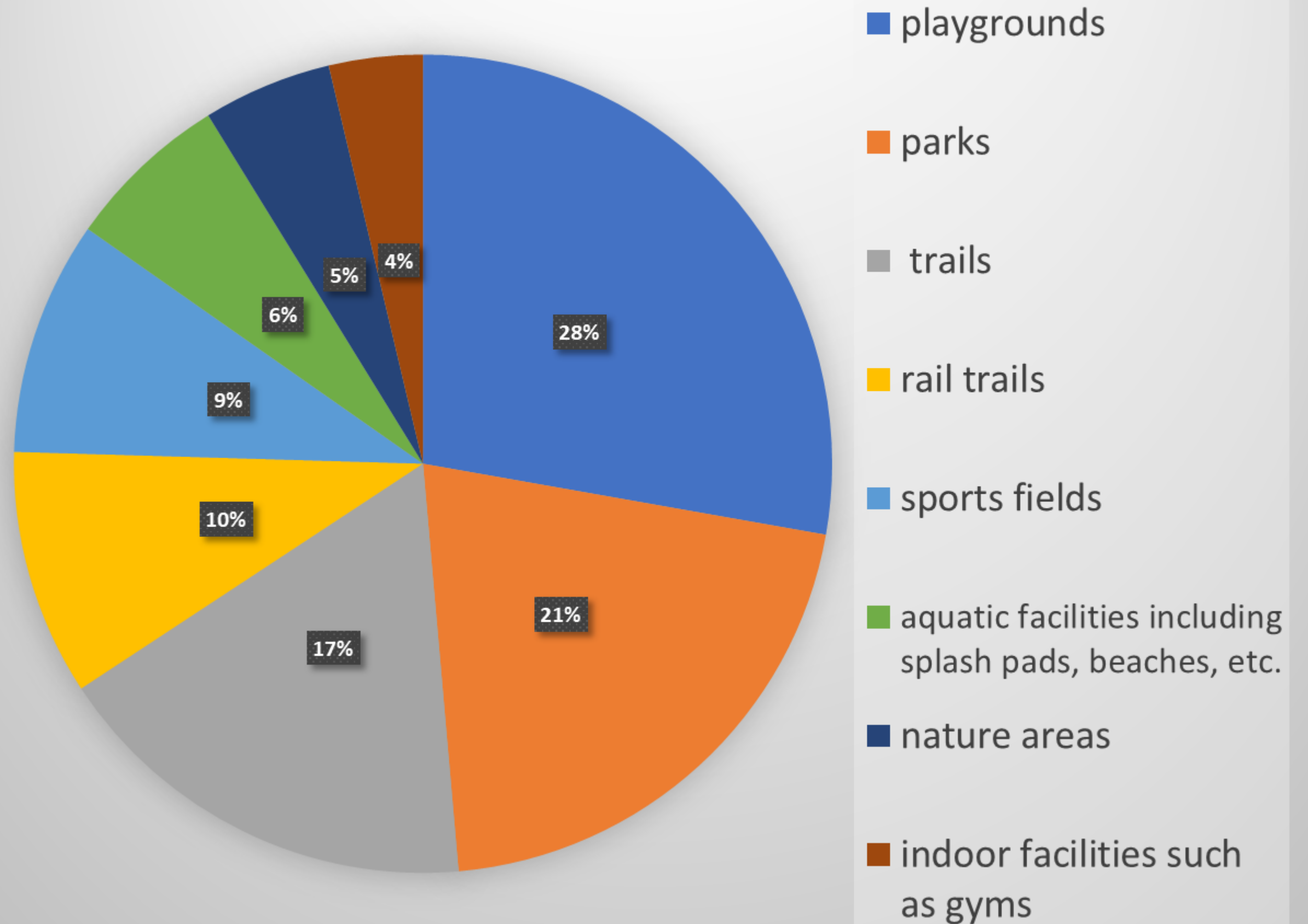
SURVEY

What town do you live in?



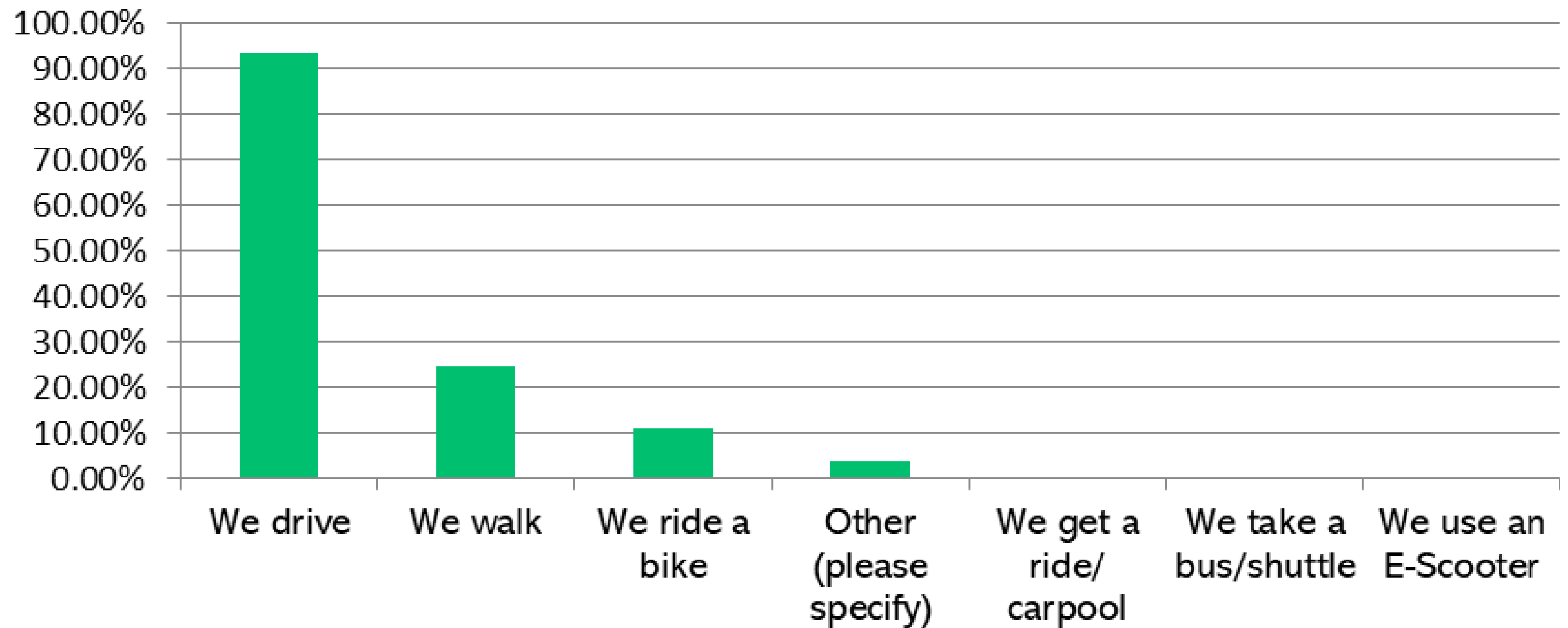
SURVEY

The children in my life enjoy...



SURVEY

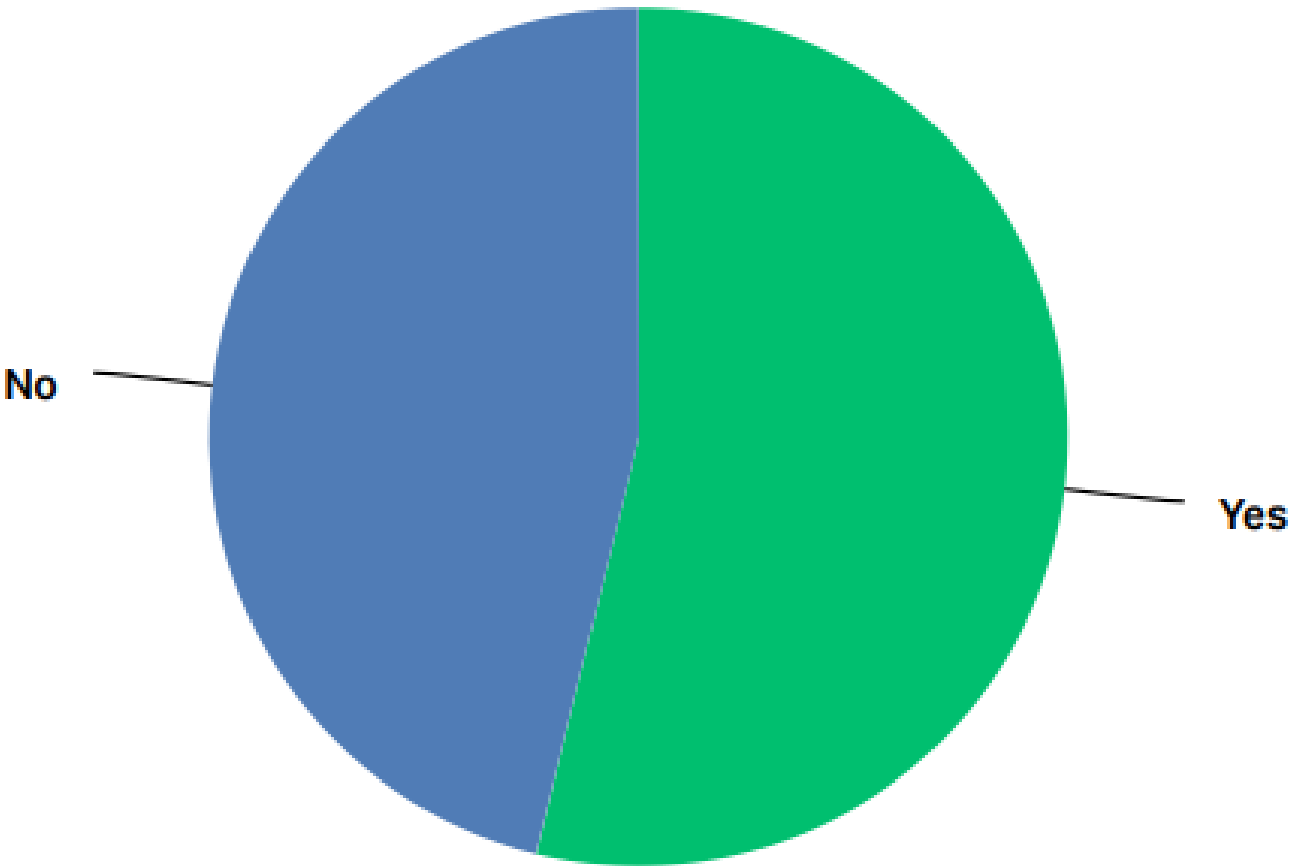
How do you typically access those facilities?



SURVEY

Q7 Are you and members of your household able to participate in active recreation activities (e.g. sports, physical wellness, outdoor play, aquatics etc.), as often as you would like?

Answered: 234 Skipped: 3

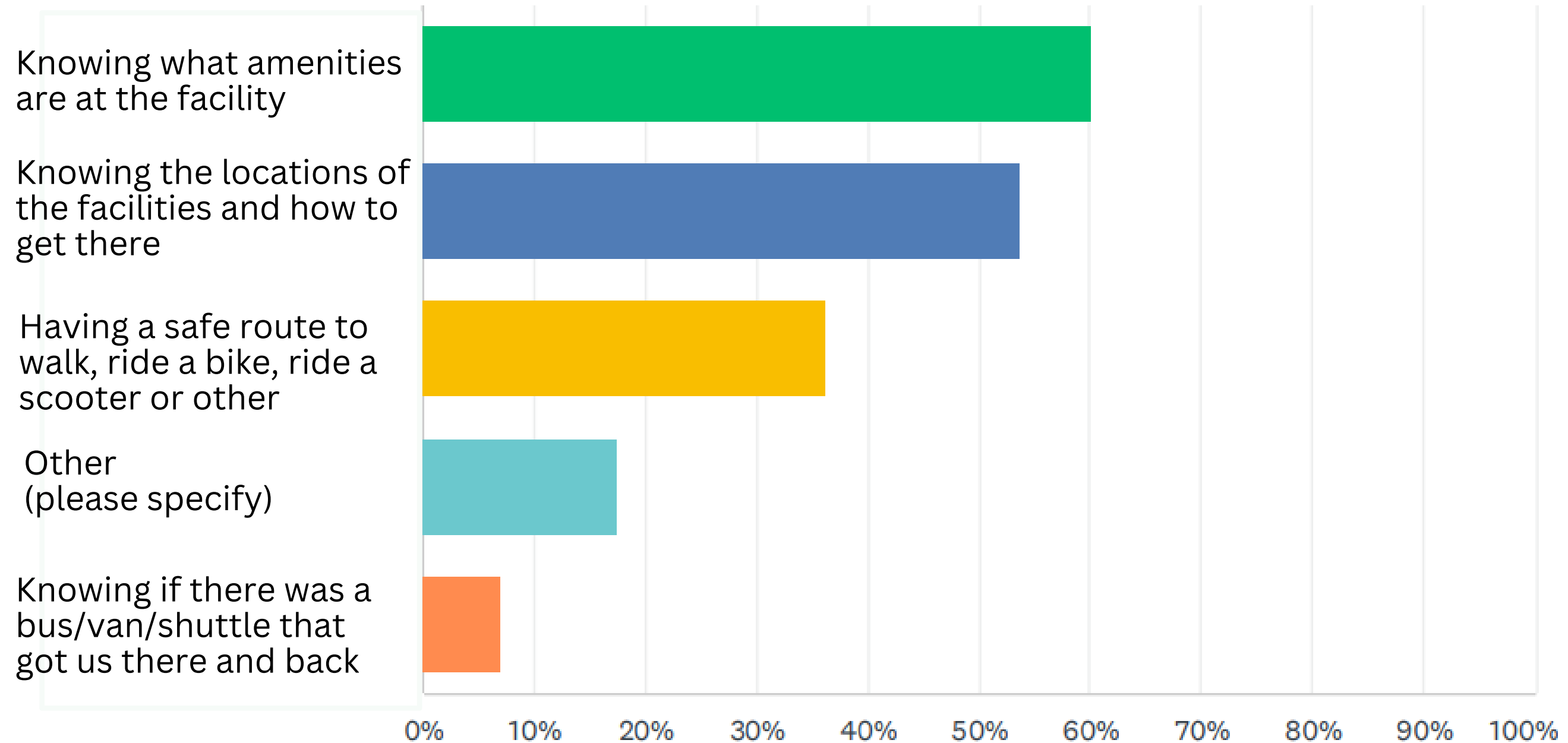


ANSWER CHOICES	RESPONSES	
Yes	53.85%	126
No	46.15%	108
TOTAL		234

SURVEY

Q9 Whether for the first time or just more frequently, what might help you to visit recreational facilities in your neighborhood or community?

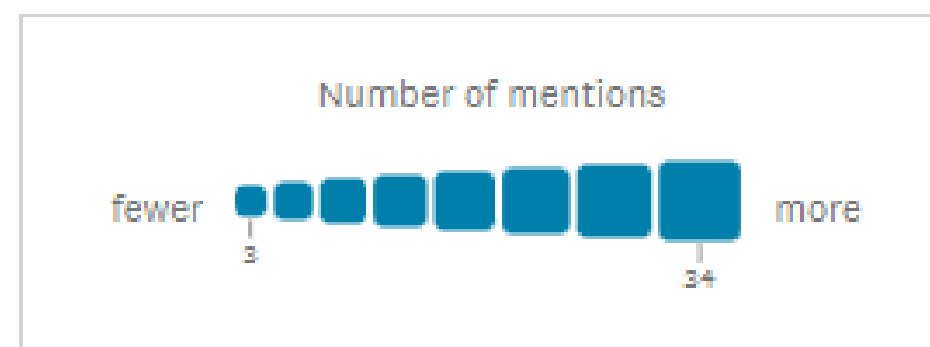
Answered: 201 Skipped: 36



SURVEY

Is there anything that would help get you to these facilities easier?

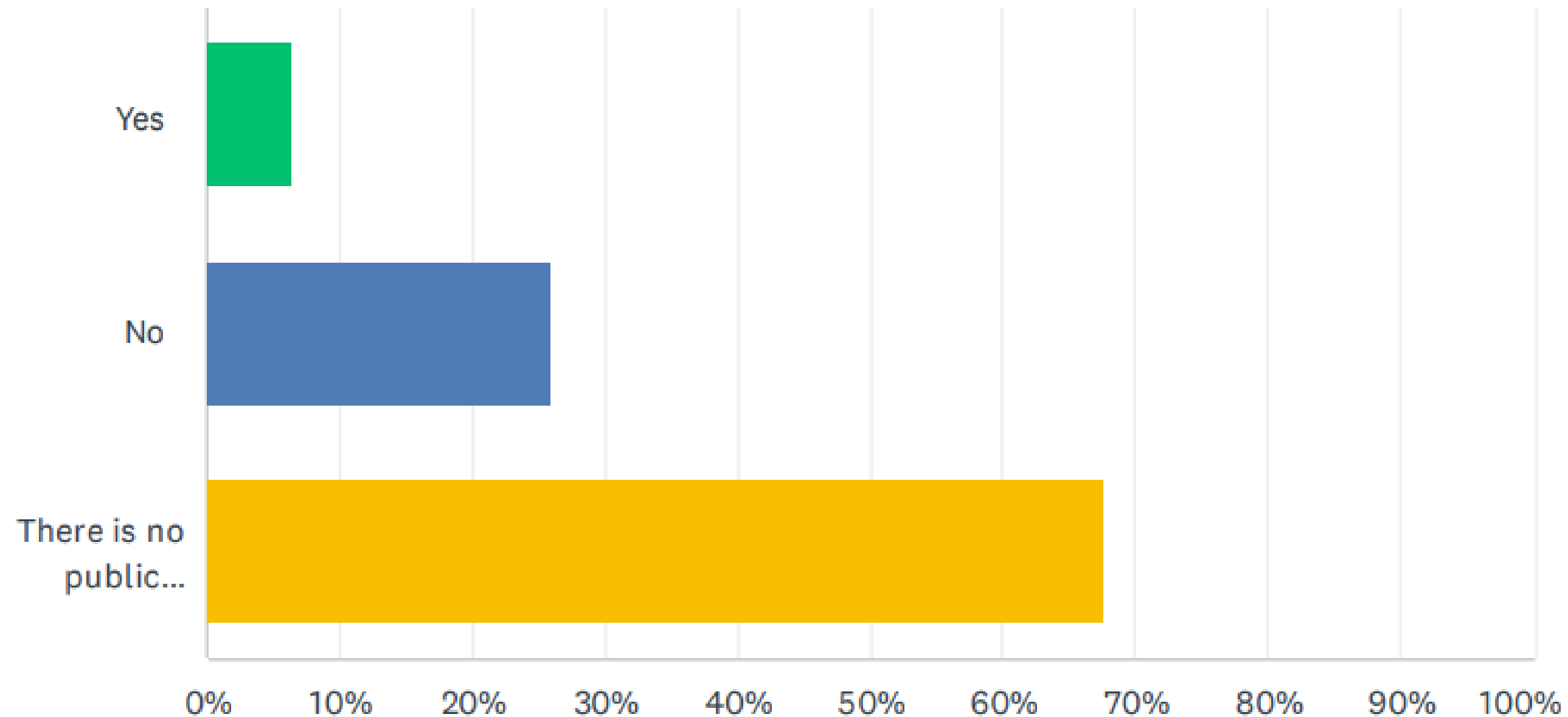
advertising Chester connects
bike path safe biking paths
school Paved **Sidewalks** ones
areas town walking trails dedicated
N roads transportation
New Boston



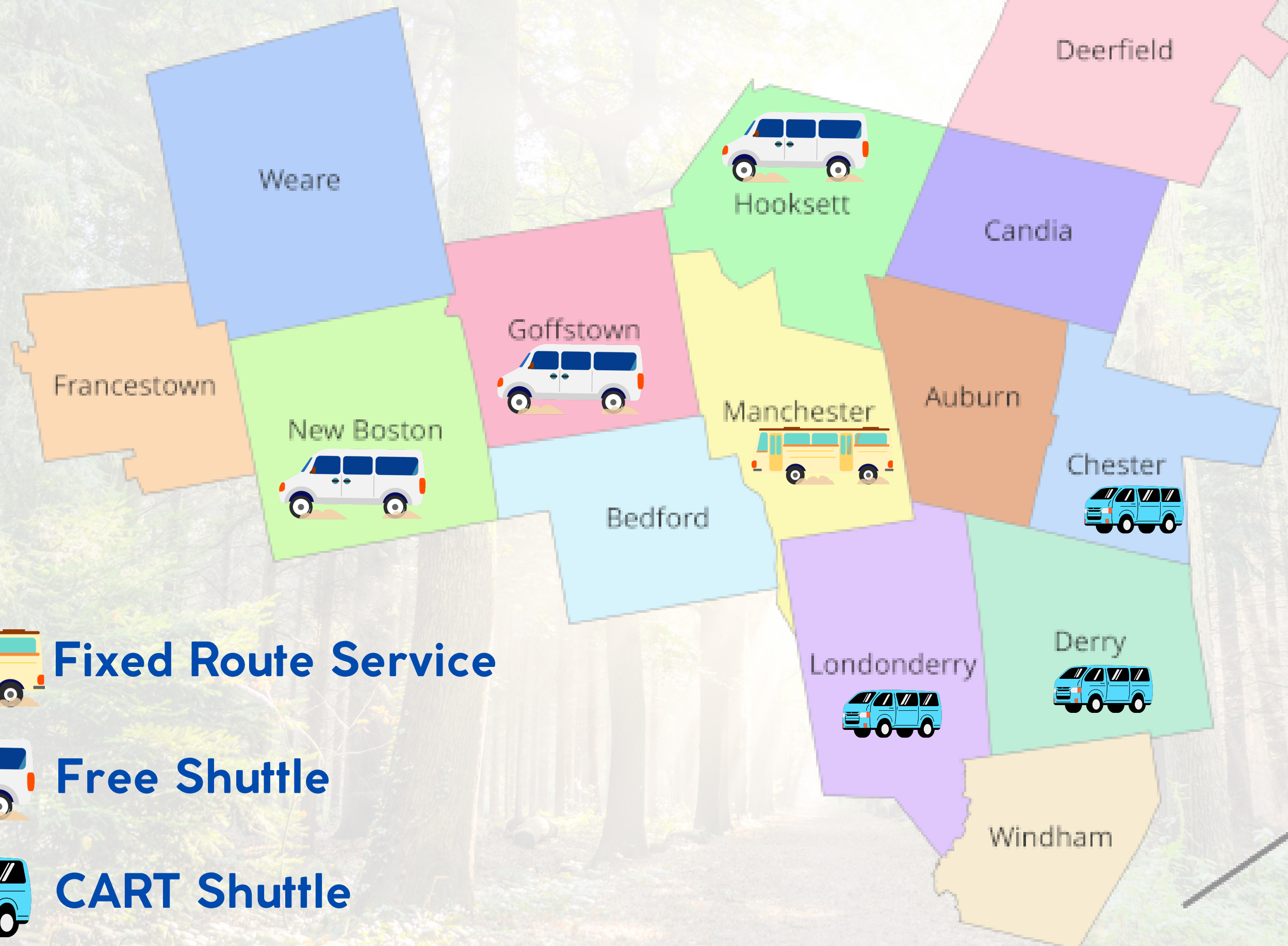
SURVEY

Q12 Are you familiar with public transportation options that would take you to recreational facilities in your neighborhood /in town?

Answered: 234 Skipped: 3



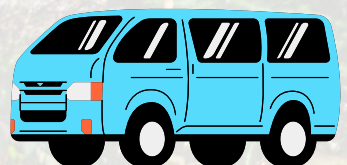
Public Transit Options



Fixed Route Service



Free Shuttle

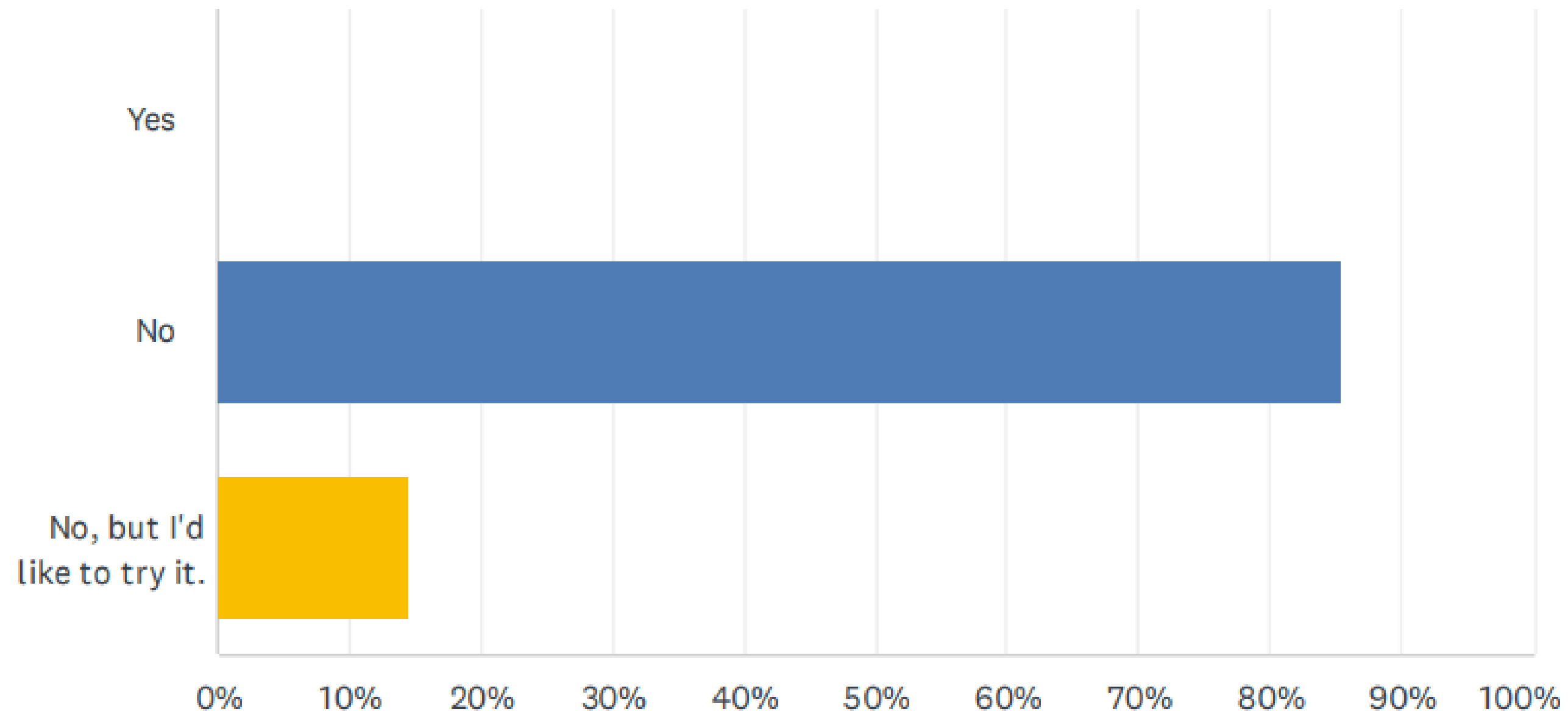


CART Shuttle

SURVEY

Q13 If yes, have you used the public transportation to get to recreational facilities?

Answered: 96 Skipped: 141



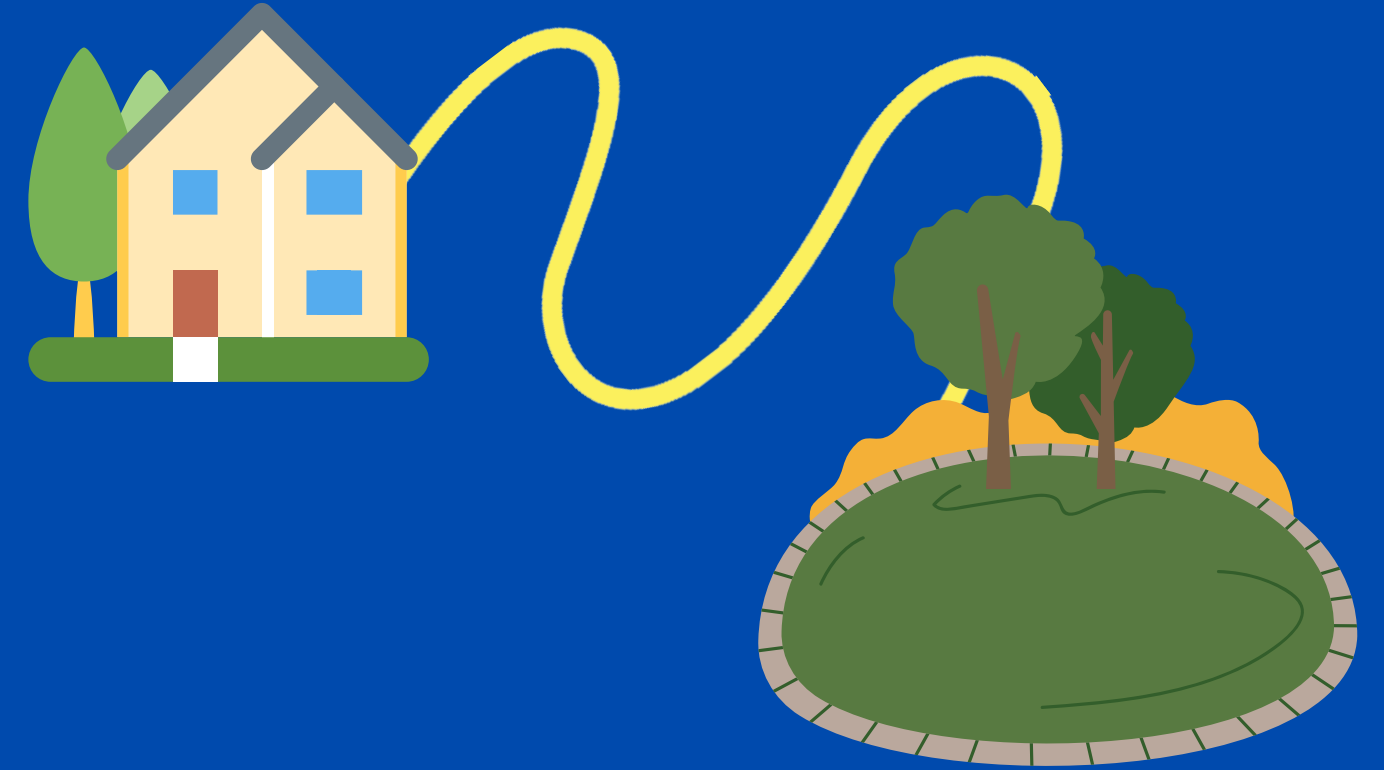
RESIDENT WISH LIST



- MORE INVESTMENT
- MORE INFORMATION
- EXPANDED OPTIONS FOR TODDLERS
- MORE AQUATIC OPTIONS
- SIDEWALKS
- MORE FACILITIES NEARBY

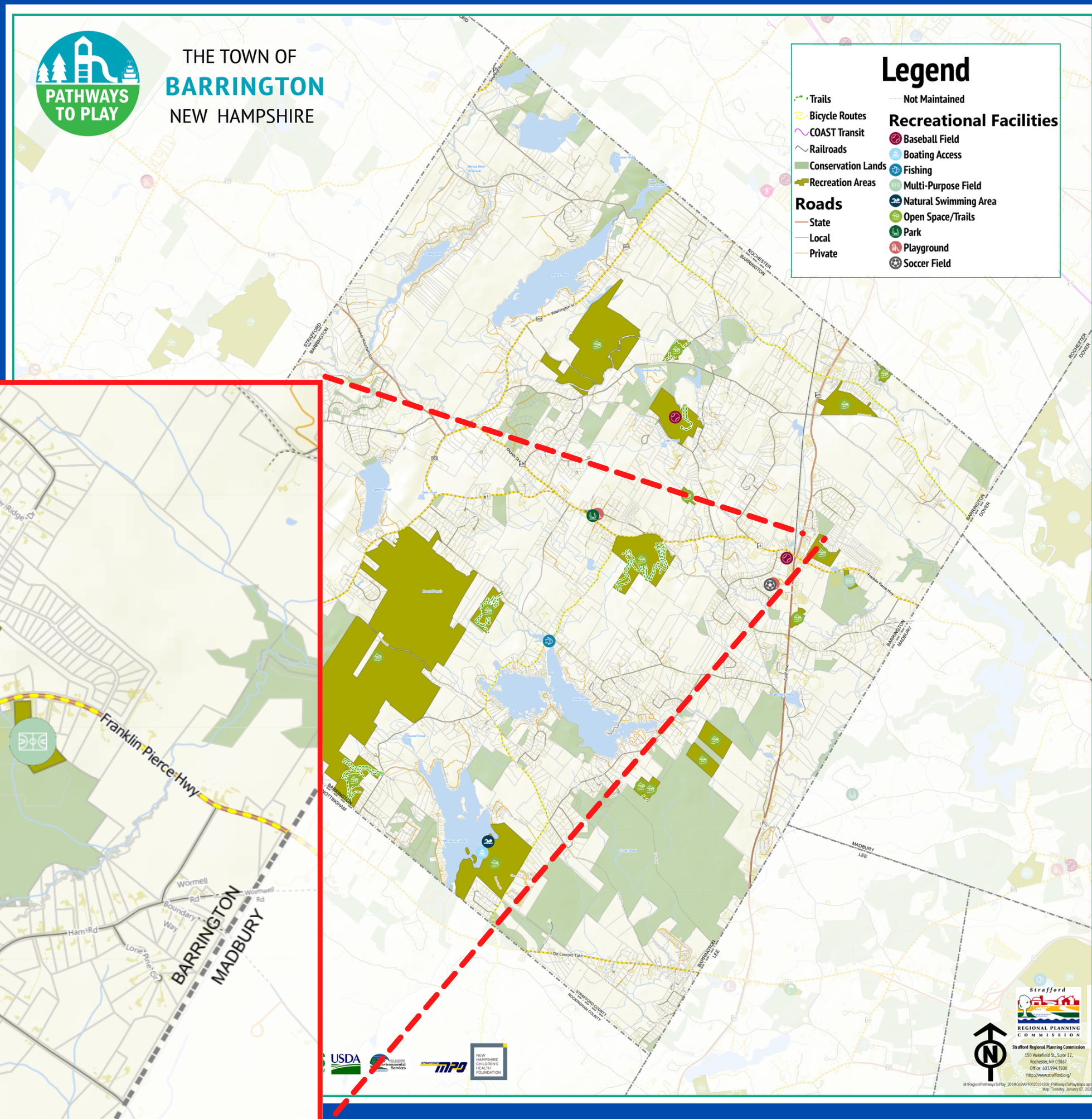
NEXT STEPS

COMMUNITY OUTREACH



- ☀ PRESENT TOWNS WITH THEIR RESIDENT SURVEY RESULTS
- ☀ GROUND TRUTH DRAFT RECREATION MAPS
- ☀ PRESENT ABOVE TO PUBLIC

MAPS

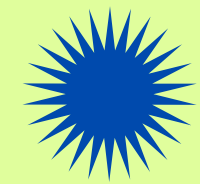


DELIVERABLES

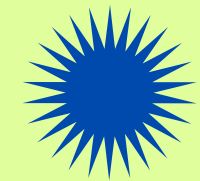
PILOT PROJECT



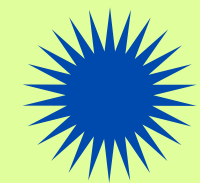
CONTACT US



TAMMY ZAMOYSKI, REGIONAL PLANNER
TZAMOYSKI@SNHPC.ORG



CAMERON PROLMAN, REGIONAL PLANNER
CPROLMAN@SNHPC.ORG



SUZANNE NIENABER, SENIOR PLANNER
SNIENABER@SNHPC.ORG

Pathways

TO PLAY

603-669-4664



SNHPC