

Mobility Management: A Year in Review

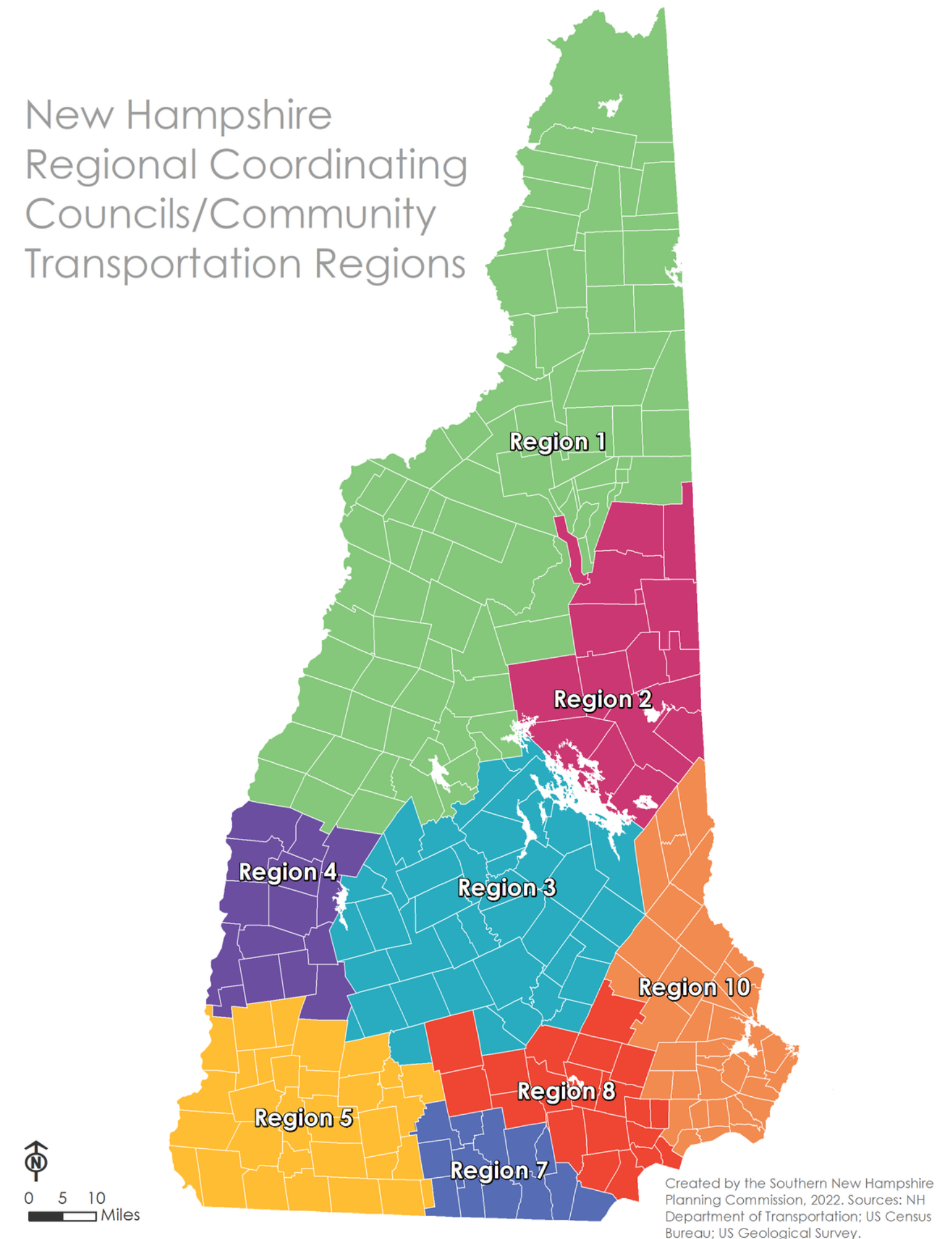
Ben Herbert
Regional Mobility Manager
Region 8



Background

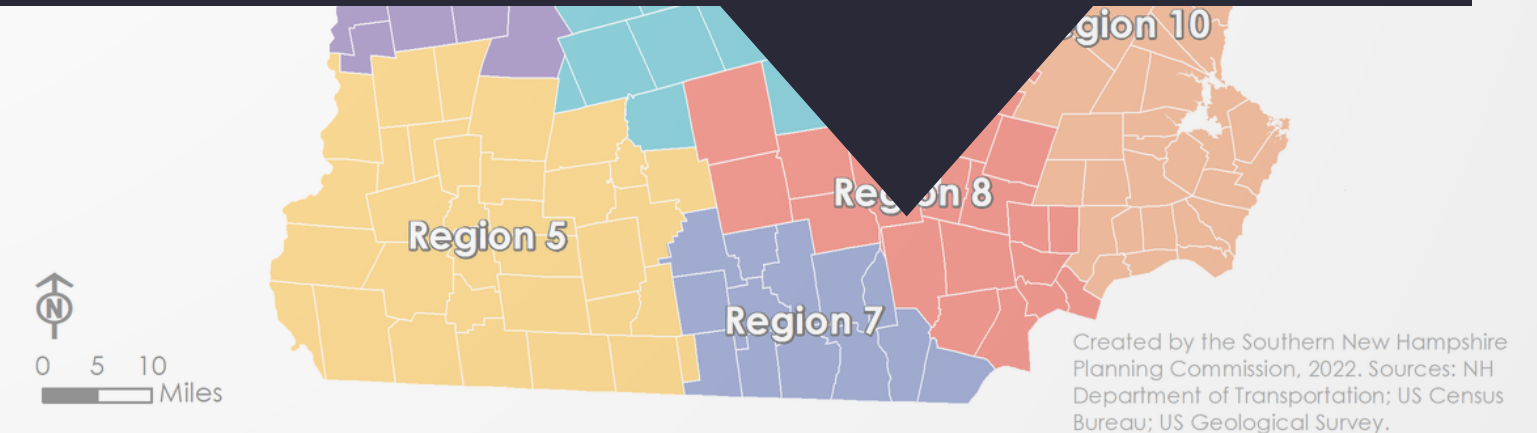
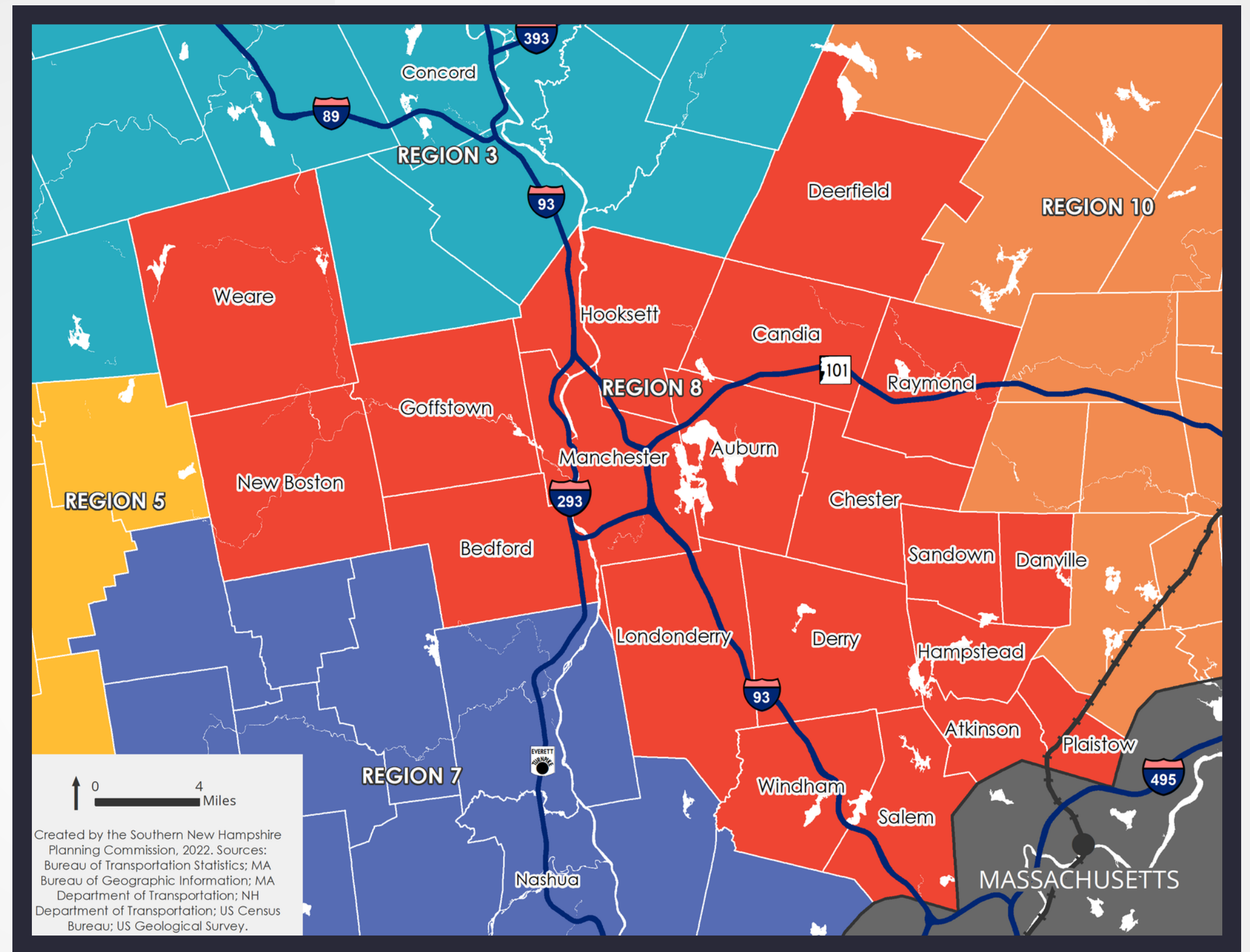
- 8 regions with a dedicated regional mobility manager.
- Mobility managers work with the regional coordinating council for each region.

New Hampshire
Regional Coordinating
Councils/Community
Transportation Regions



Background

- 8 regions with a dedicated regional mobility manager.
- Mobility managers work with the regional coordinating council for each region.
- I serve region 8.



What Is Mobility Management?



A champion
for community
transportation



A network
builder



A social
worker for
transportation

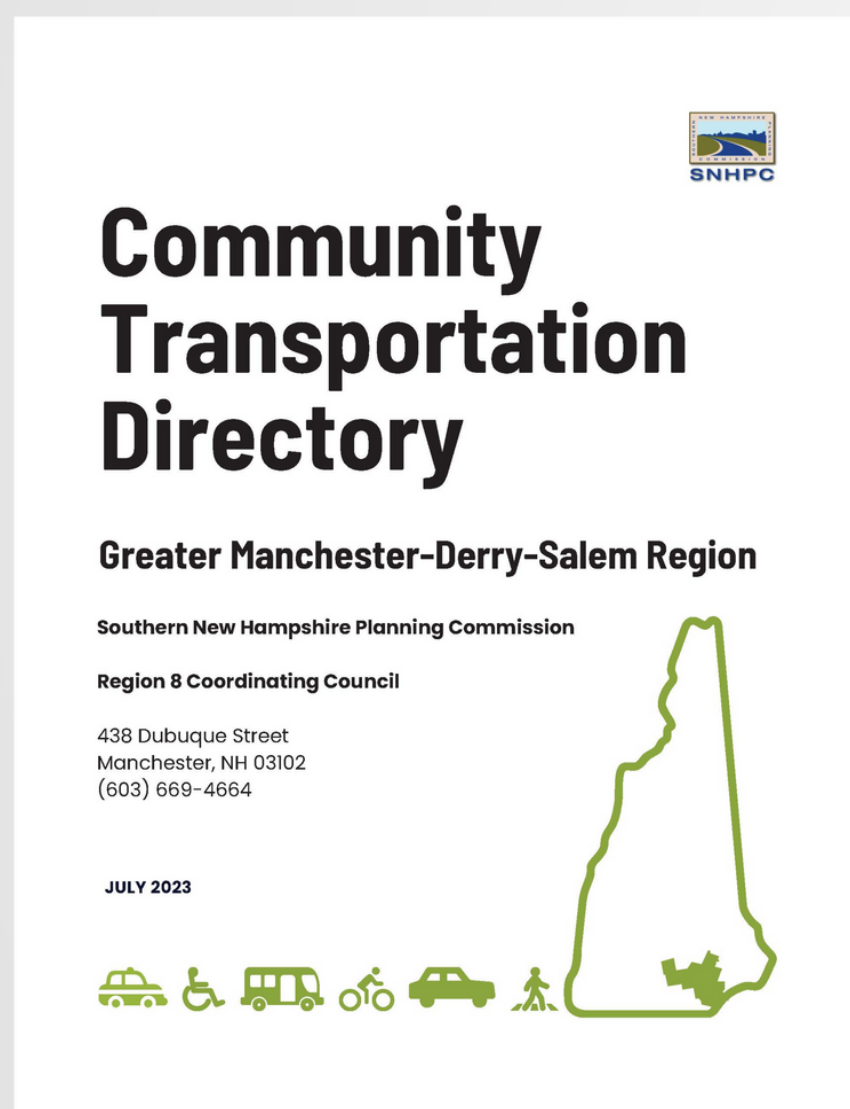


Accomplishments as:

A champion for community transportation

Updated Regional Transportation Directory

- First update in 6 years
- 26 transit services highlighted
- Information provided for 20 communities
- Available online





Accomplishments as:

A champion for community transportation

Outreach materials distributed



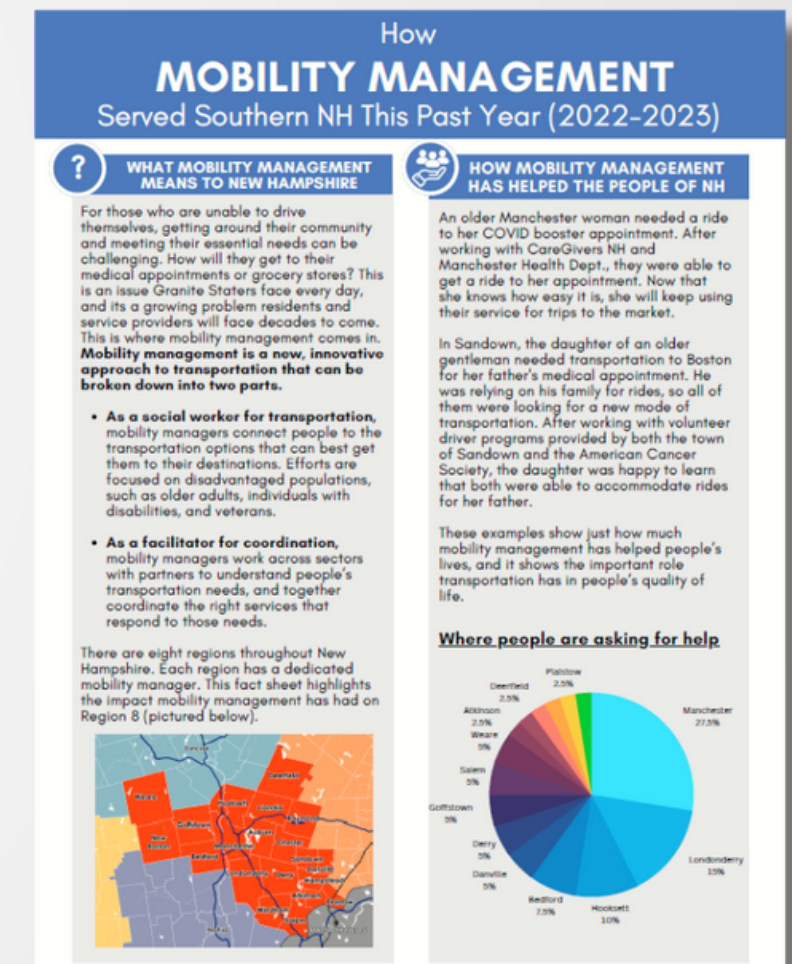
MM Newsletter



Brochures



Posters



Flyers

+400 distributed this past year



Accomplishments as:

A champion for community transportation



Updated web resources

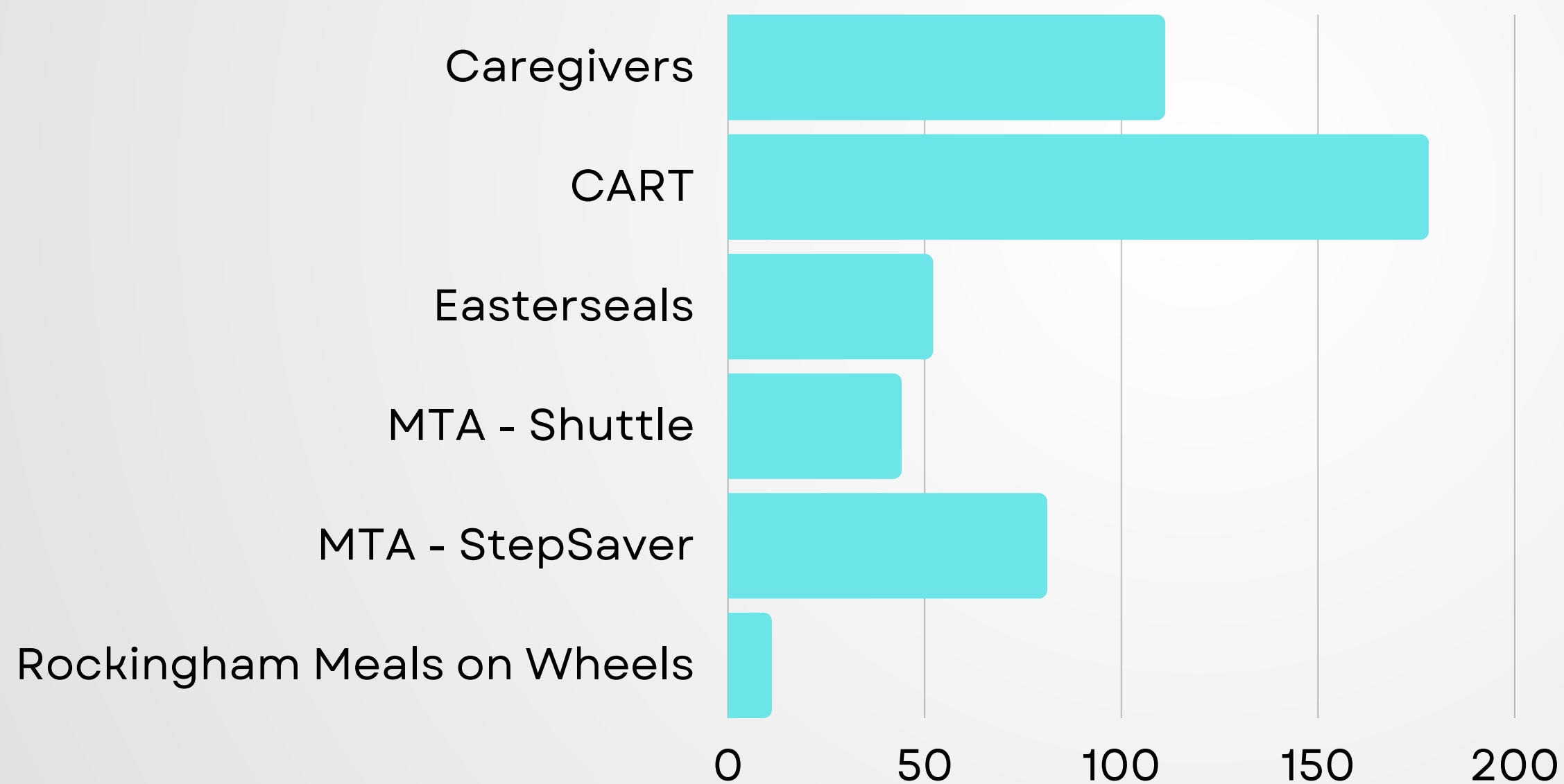
- Transportation information on snhpc.org
- I Need a Ride!
- Working with local municipalities on updating transit information on their websites



Accomplishments as:

A champion for community transportation

New riders across 6 regional services



**479 new riders in
FY23**



Accomplishments as:

A network builder

Who am I making connections with?

- Transportation providers
- Senior centers
- Librarians
- Human service organizations
- Local municipal staff
- Health organizations

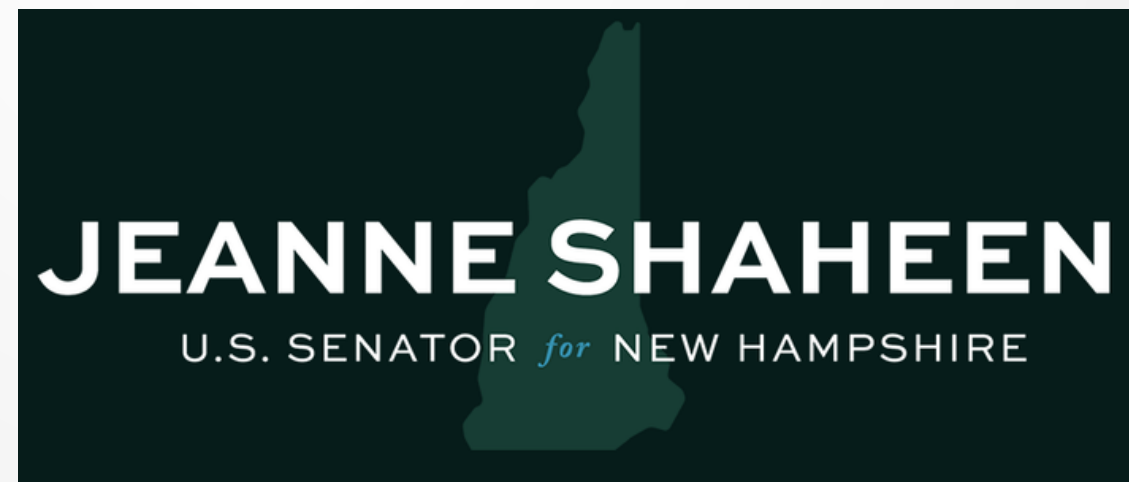




Accomplishments as:

A network builder

Examples include:

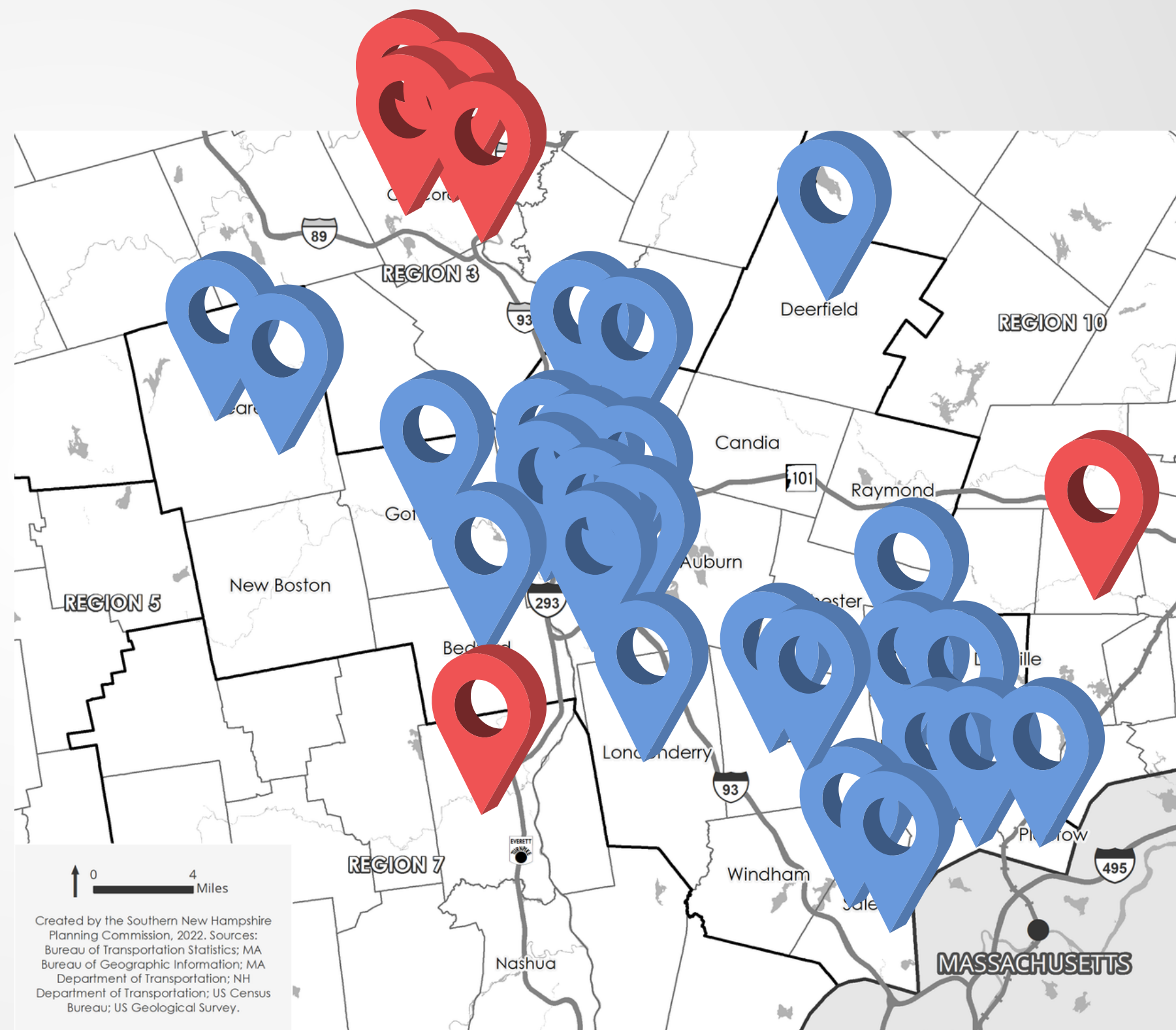


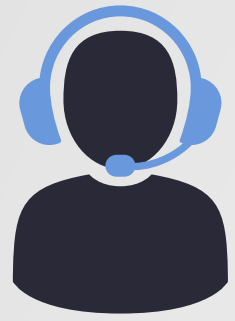


Accomplishments as:

A network builder

**33 connections
and partnerships
made**

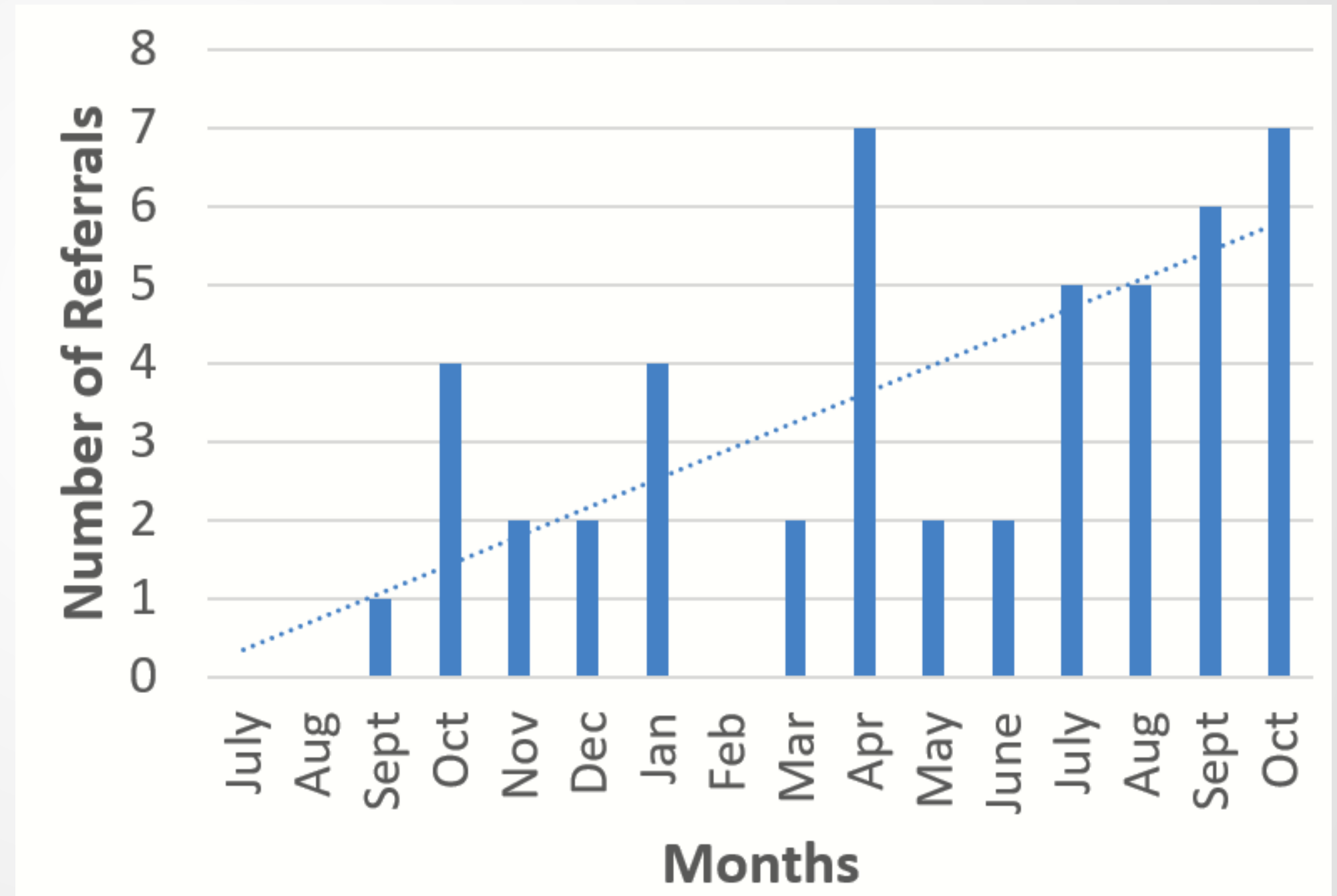


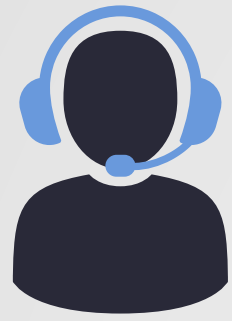


Accomplishments as:

A social worker for transportation

- Assisted **49** individuals with finding transportation.
- Medical appointments was the most common trip purpose at **40%.**

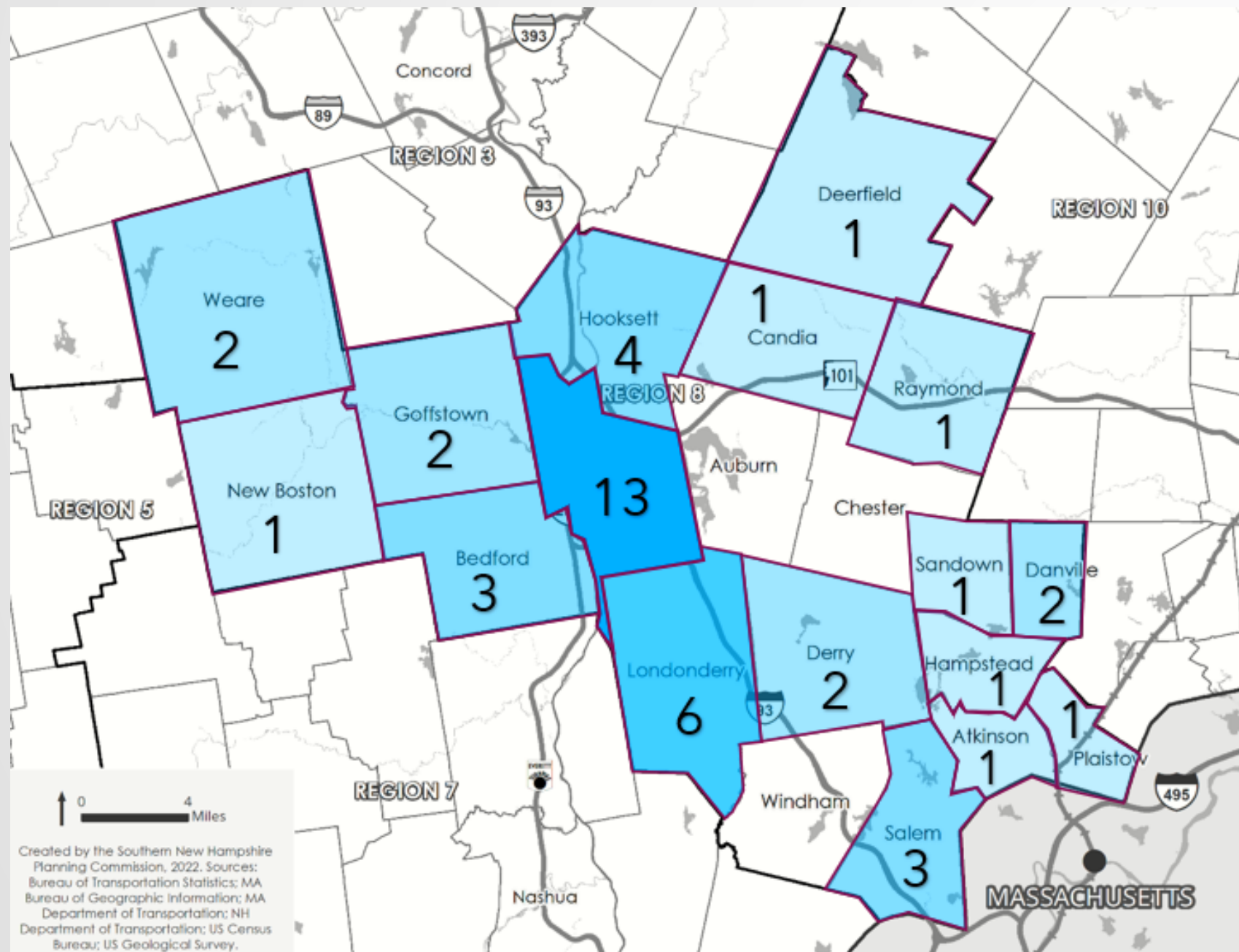




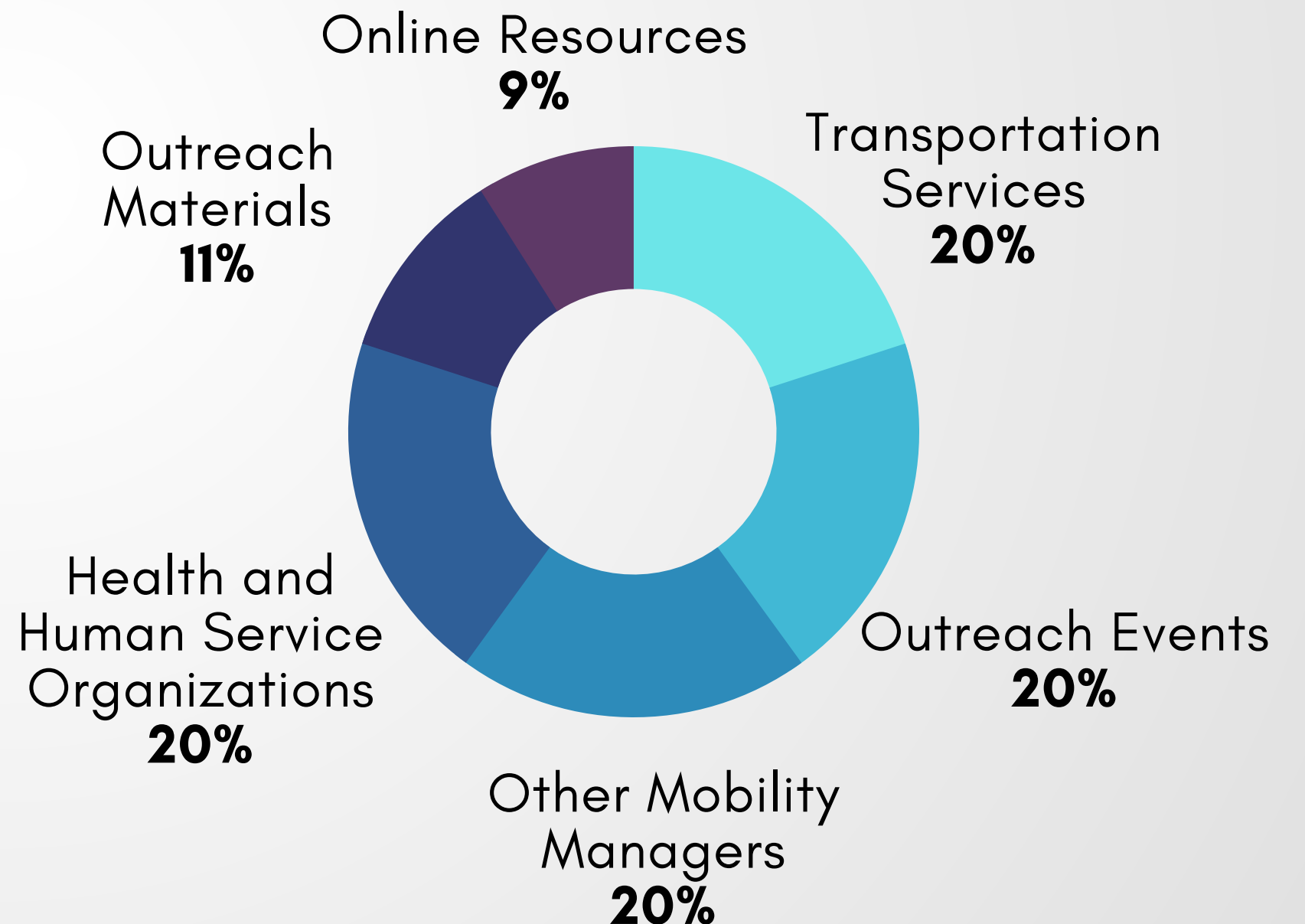
Accomplishments as:

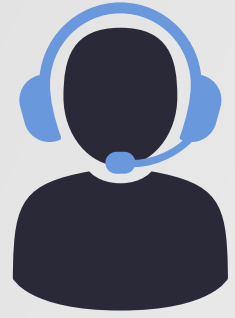
A social worker for transportation

Where people need rides



How people get connected to me





Accomplishments as:

A social worker for transportation

Where people need to go

49%

throughout the region

18%

outside the region

5%

out of state

Medical appointments in:

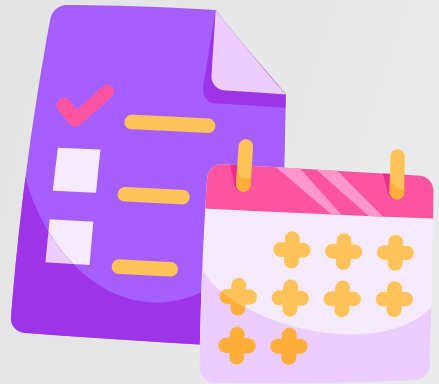
- Manchester
- Derry
- Bedford
- Windham

- Concord
- Lebanon
- Exeter
- Durham-UNH

- Boston
- Haverhill

28% just want to get around

What's Ahead?



**Creating
workplan for
FY 24**



**Continue working
with municipalities
on updating websites**



**Conduct surveys
to identify needs**



**Support
immigrant elders**



**Explore new
avenues in
promoting transit**



**Assist in
developing new
statewide transit
resource website**

Thank you!

Ben Herbert

Regional Mobility Manager

603-669-4664

bherbert@snhpc.org

