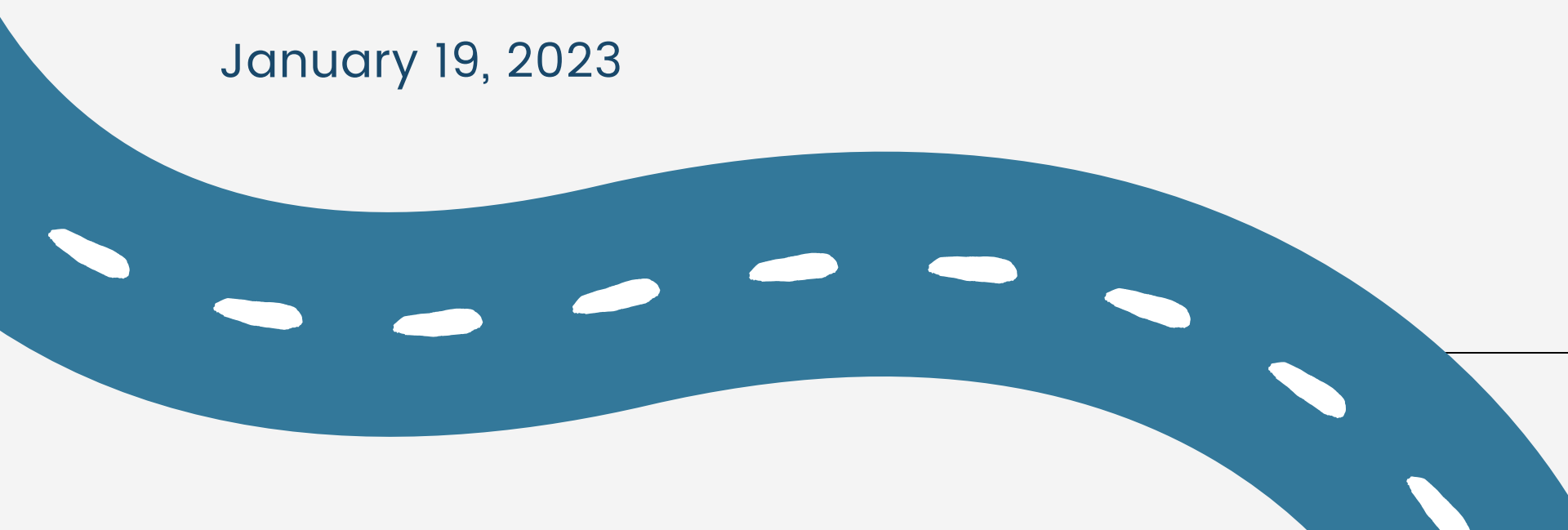
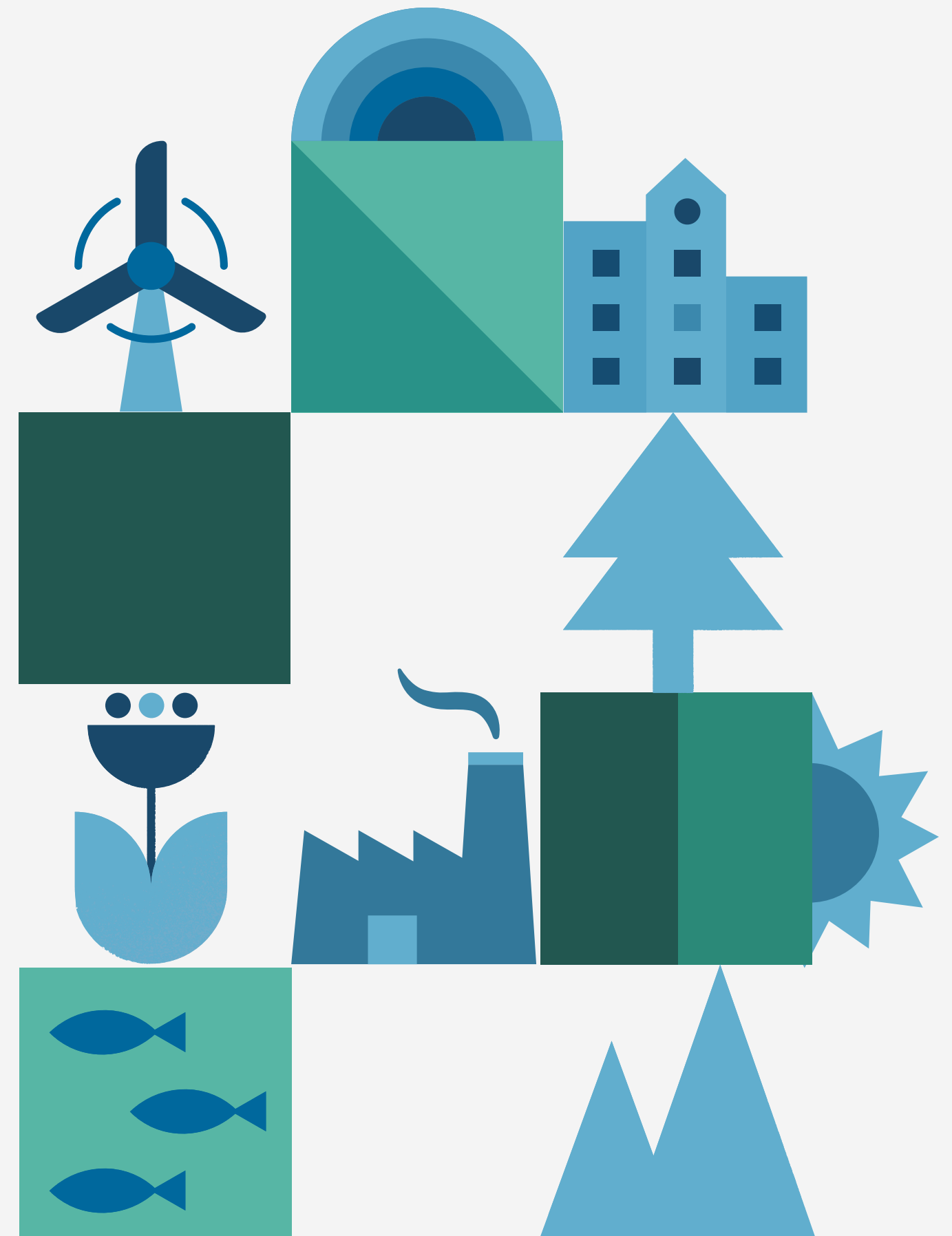


SOUTHERN NEW HAMPSHIRE
REGIONAL PLANNING COMMISSION

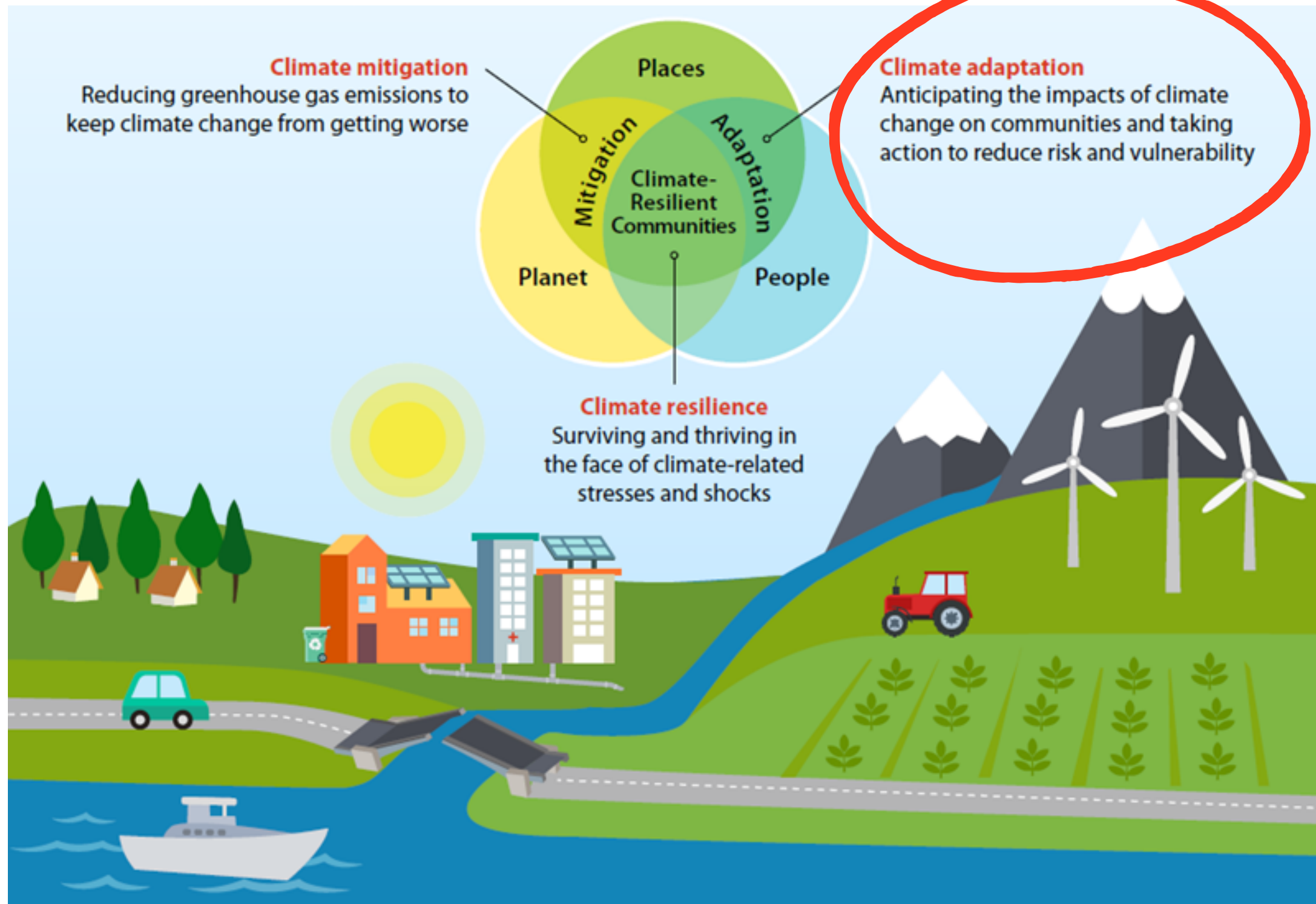
REGIONAL CLIMATE ACTION PLAN

Road Network Adaptations

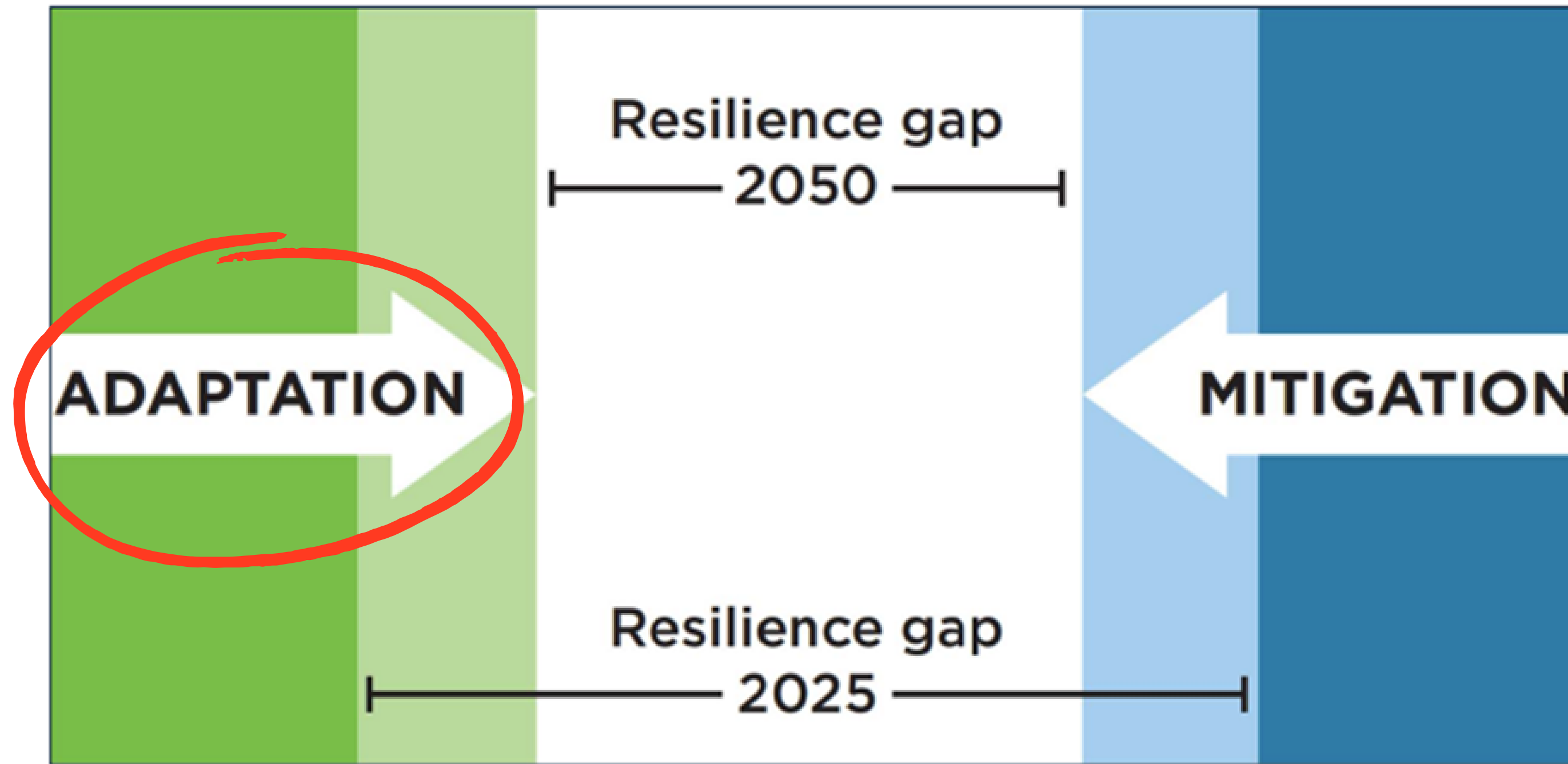
January 19, 2023



Mitigation + Adaptation + Resilience



Mitigation + Adaptation + Resilience



Union of Concerned Scientists, Resilience Gap Framework Illustration, 2016

Regional climate concerns

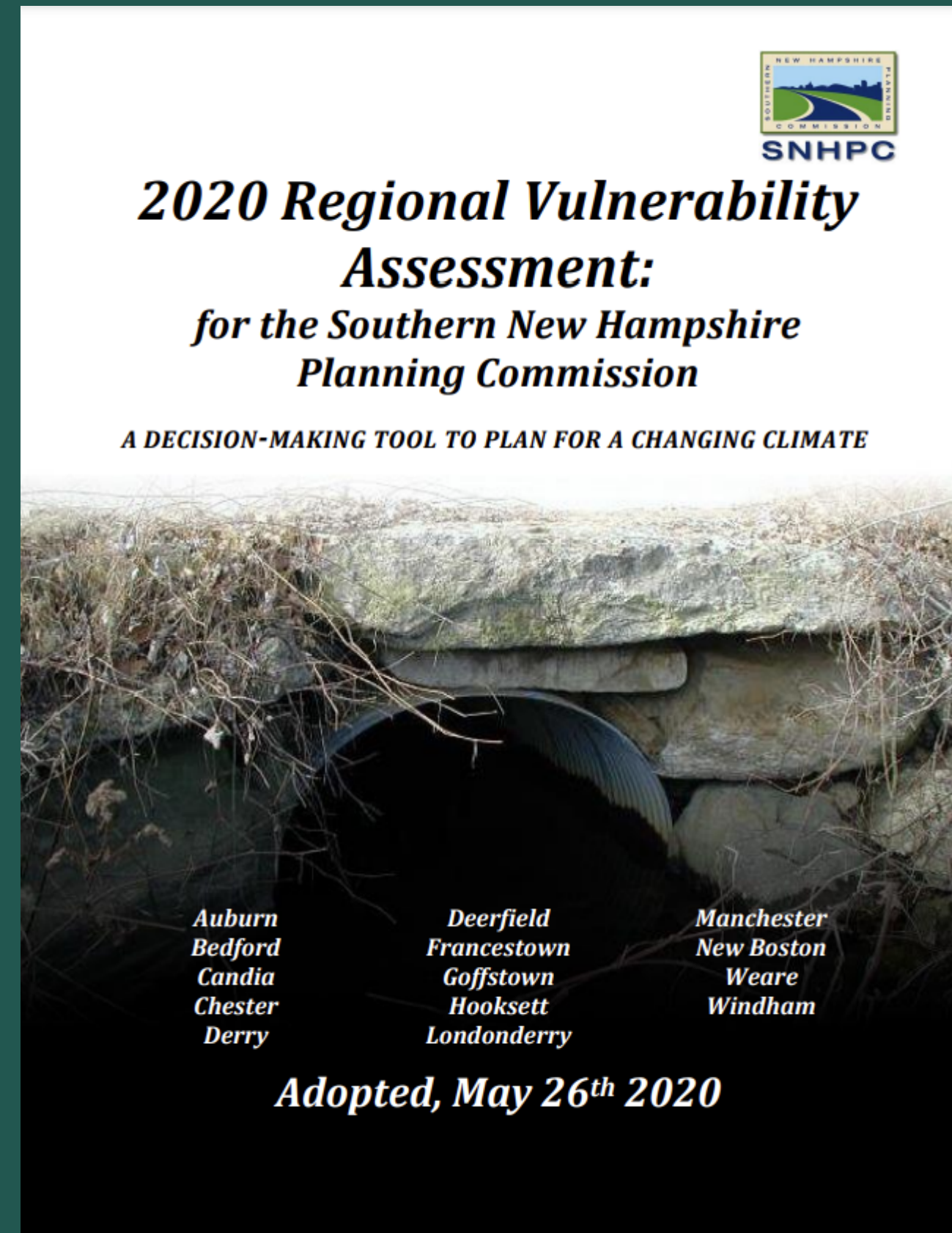
- Heavier, more frequent rainfall events
- Higher risk of flooding
- Infrastructure vulnerability



Regional Climate Action Plan | Roadway Adaptations

2020 Regional Vulnerability Assessment

- Region-wide assessment of culverts and small bridges
- Framework to evaluate the risks associated with extreme precipitation events
- Online GIS map inventories vulnerable stream crossings
- Lays the groundwork for regional climate action!



1. Expand technical analysis



Analyze all Federal aid-eligible roadways



In addition to bridges and culverts, map steep slopes and fluvial erosion



Establish criteria and metrics for assessing vulnerability at the corridor level

2. Provide practical implementation guidance



Scan resources to identify best practices and develop a menu of strategies



Illustrate implementation options via case studies



Model adaptation vs. replacement costs and implications for lifecycle modeling

3.

Advance regional climate collaboration



Host an inaugural climate action workshop



Discuss draft roadway adaptation plan in development and ID priority topics for future analysis



ID key partners to recruit for future collaboration

Seeking climate champions!

Interested? Contact

Suzanne Nienaber
snienaber@snhpc.org
603-669-4664

Mtg 1. Review early
content & advise on
workshop prep



Feb / Mar

Mtg 2. Attend Regional
Climate Workshop



April

Mtg 3. Review updated
draft plan



May / Jun

SOUTHERN NEW HAMPSHIRE
REGIONAL PLANNING COMMISSION

THANK YOU!

Questions?

