



SNHPC

SUMMARY OF PEDESTRIAN INFRASTRUCTURE ON HAWTHORNE DRIVE

Prepared by Kevin Lawson
Assistant Planner, SNHPC

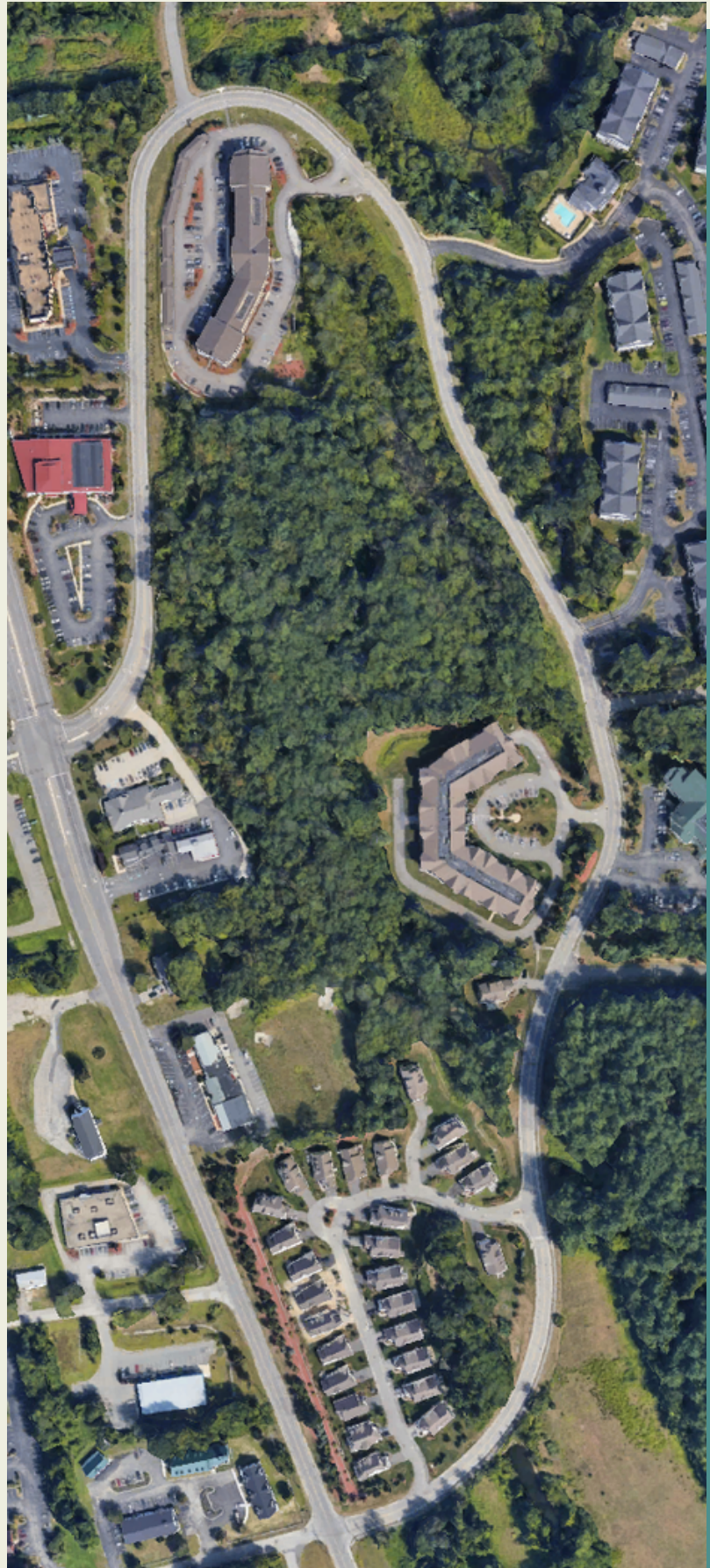
Analysis of data collected for the NH SADES
pedestrian infrastructure database.

Findings Overview

In September, 2022, pedestrian infrastructure on Hawthorne Drive was assessed and documented in the NH SADES inventory.

The assessment documented:

- 4258 feet of sidewalk
- 7 crosswalks
- 4 curb ramps
- 1 pedestrian actuated signal



Sidewalks on Hawthorne Drive were in mostly good condition, with a few exceptions. The following conditions were observed:

- faded crosswalk paint
- a curb ramp without flush conditions on/off
- distressed sidewalks in some areas causing cracking


The sidewalk in the photo is located near the southern end of Hawthorne Drive. Ground settling is stressing the asphalt.




Navigating NHDOT SADES Database

The database can be accessed in NHDOT's GIS Data Catalog, or by clicking this link:

<https://nh.maps.arcgis.com/apps/webappviewer/index.html?id=6ce5a2afccc843ceb872cf8a4dd8a3ad>





AirRailHighwayBike/PedPublic Transit

search this site

Home

Traveler/Commuter Info

Media Center

Doing Business with DOT

Project Center

Laws/Policies/Procedures

Job Opportunities

Divisions/Bureaus/Districts

Planning and Community Assistance

Bureau Contacts

Document Library

FAQs

Links

Contact Us

Site Map

Project Development > Planning and Community Assistance > GIS Data Catalog

Welcome to Planning's GIS Data Catalog where you will find links to Data, Maps, Reports and Guides.

Online Maps

If you are looking for:	Use this Online Map	Guidesheets
NH Roads attributes by Town, County, District	NH Roads and Projects Viewer	
NH Projects by Planned, Current & Completed	NH Roads and Projects Viewer	
DOT Right Of Way Acquisition Plans for Projects	NH ROW Online Map	ROW Viewer Guidesheet
State Road Tiers	NH Tiers Online Map	Tier Definitions
SADES Pedestrian Infrastructure Assets by Town	Pedestrian Asset Online Map	
Red List Bridge Conditions with Tier Roads	Bridge Conditions Online Map	
Pavement Conditions by Town	Pavement Conditions Online Map	
Culverts & Other Closed Drainage System Data	CCDS Online Map	CCDS Viewer Guidesheet

SADES Pedestrian Infrastructure

Query

TOWNRESULTS

Town Boundaries

Query criteria

CHOOSE TOWN

- empty -

Apply

Legend

SADES Pedestrian Photos

SADES Pedestrian Access Buttons

SADES Curb Ramps

SADES Crosswalks

SADES Sidewalks

Concord

Great Turkey Pond

Turkey River

White Road

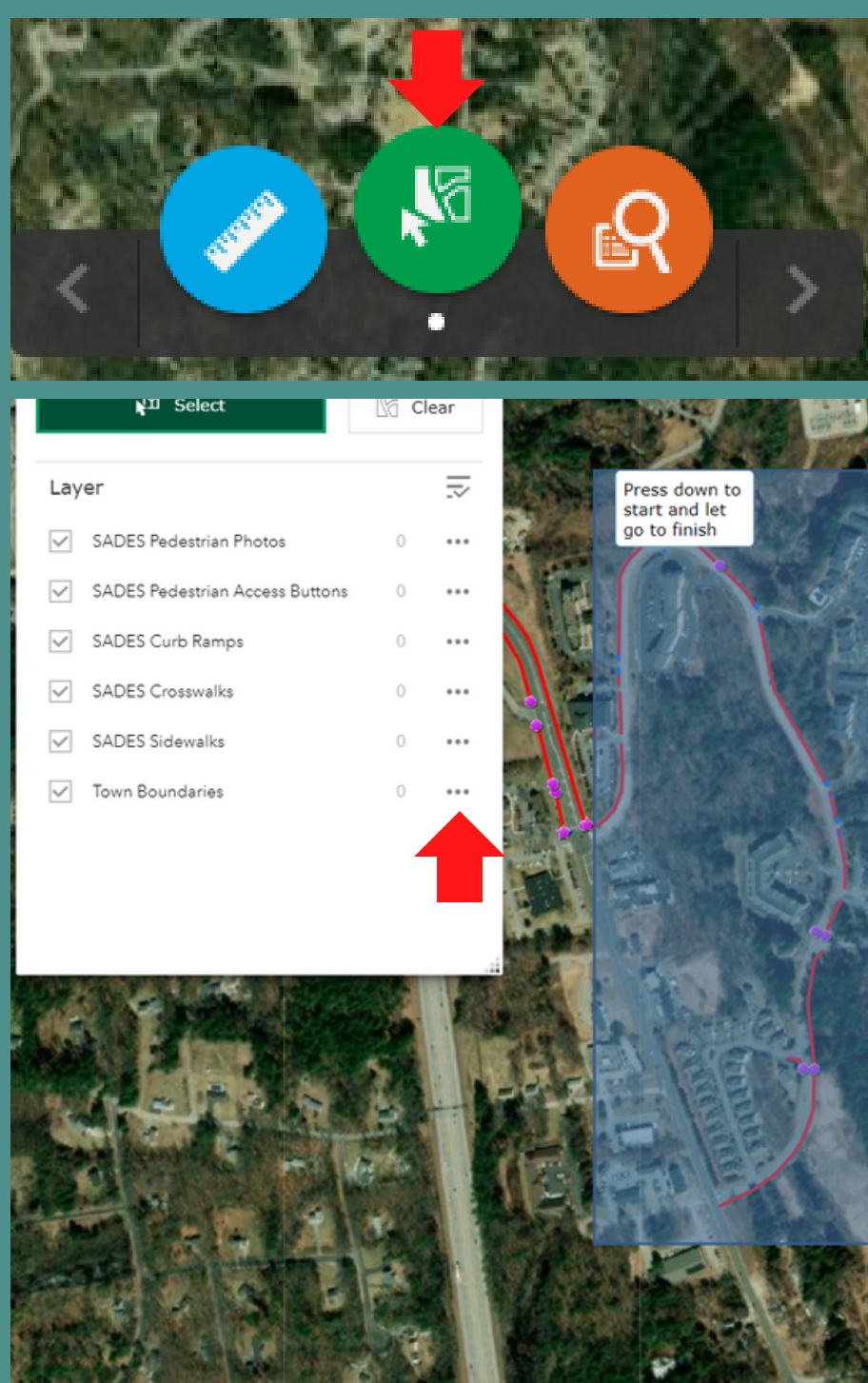
Black Brook

Gravel Brook

-71.502 43.202 Degrees

Earthstar Geographics | Esri, HERE, Garmin

1. Choose your town from the dropdown and click apply
2. Click the green "Select" tool
3. Drag and drop the cursor over the map to select the subject infrastructure.
4. In the Layer list, you will see the total number of each feature in the highlighted area. Click the "..." next to a layer to reveal a drop down menu.
5. Click "View in Attribute Table" to view the data in a spreadsheet format.
6. To download the data from the attribute table, click "Options" then "Export Selected to CSV"



SADES Sidewalks										
Options	Filter by map extent		Zoom to	Clear selection		Refresh				
SADES ID	Organization	Town Name	Road Name	Surface Material	Sidewalk Condition	Surface Defects	Curb Type	Curb Condition		
9/9/2022, 12:37 PM	15,216	SNHPC KL	BEDFORD	Hawthorne Dr	Asphalt	Fair	Cracks	Granite	Fair	2
9/9/2022, 12:42 PM	15,217	SNHPC KL	BEDFORD	Hawthorne Dr	Asphalt	Fair	Cracks	Granite	Good	2
9/9/2022, 12:46 PM	15,218	SNHPC KL	BEDFORD	Hawthorne Dr	Asphalt	Poor	Cracks	Granite	Fair	2