

SUMMARY OF GOFFSTOWN PEDESTRIAN INFRASTRUCTURE

Prepared by:

Anthony Summers

Planning Field Technician, SNHPC

ASUMMERS@SNHPC.ORG

603-669-4664

Andrew Lawpaugh

Data Collection Assistant, SNHPC

February 2024

Analysis of data collected for the NH SADES
pedestrian infrastructure database.

CONTENTS

Report Introduction	2
About SADES	2
Overview of Infrastructure Inventory	3
Terms and Conditions Photo Glossary	5
Goffstown Village Findings Overview	10
Grasmere Findings Overview	13
Pinardville Findings Overview	16
About the SADES Web Viewer	19
Explore Web Viewer Data	20

TABLES

Poor Sidewalk Conditions & Locations	26
Crosswalks with Faded Paint	28
Curb Ramps Without Crosswalks	30
Curb Ramps in Poor Condition	32

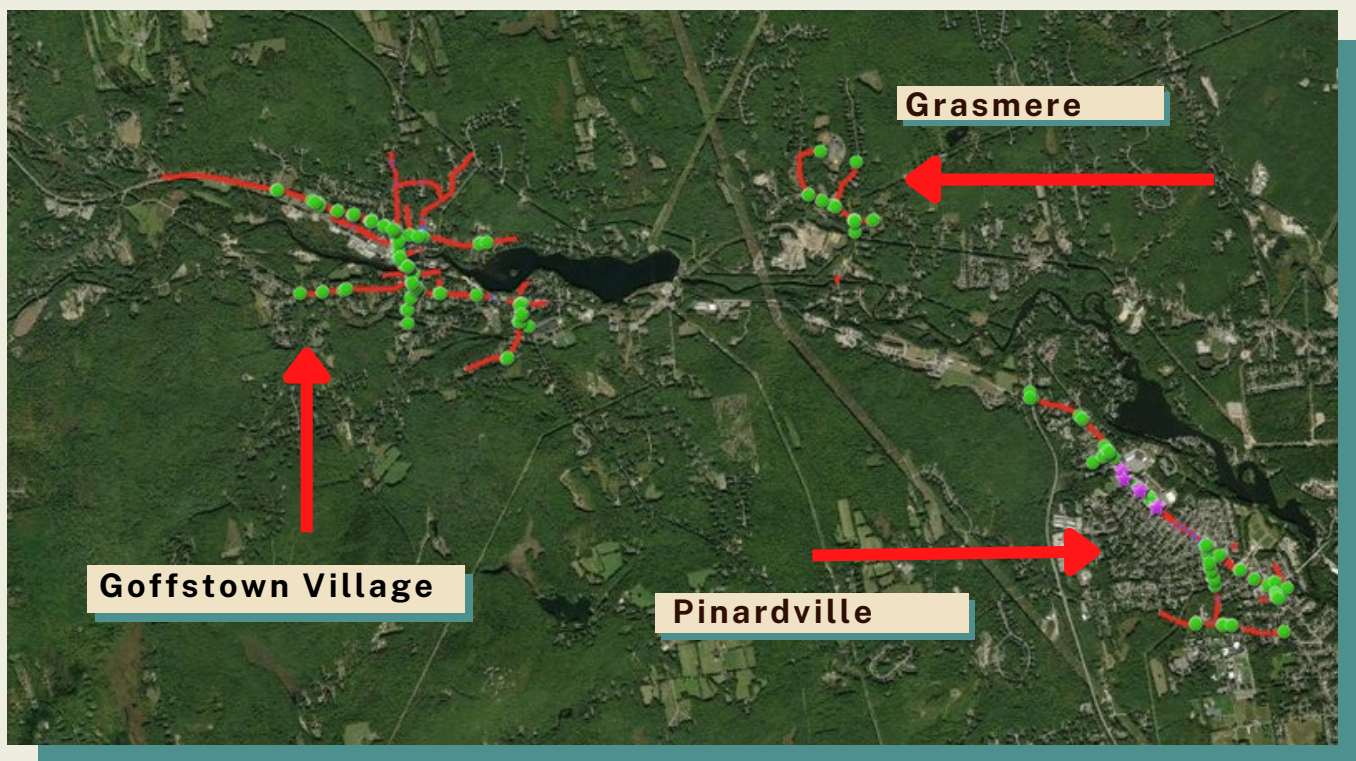
Goffstown Pedestrian Infrastructure Report

The Goffstown pedestrian infrastructure inventory captures a maintainable condition assessment of sidewalks, curb ramps, and crosswalks. Southern New Hampshire Planning Commission (SNHPC) staff performed data collection from September 2022 through February 2024. This report reflects pedestrian infrastructure conditions during this period of time.

About the Statewide Asset Data Exchange System

The Statewide Asset Data Exchange System (SADES) is a standardized process for collecting and sharing transportation access data across New Hampshire.

SNHPC staff inventoried the condition of pedestrian infrastructure in Goffstown Village, Grasmere, and Pinardville for inclusion into the statewide SADES inventory map (featured below).

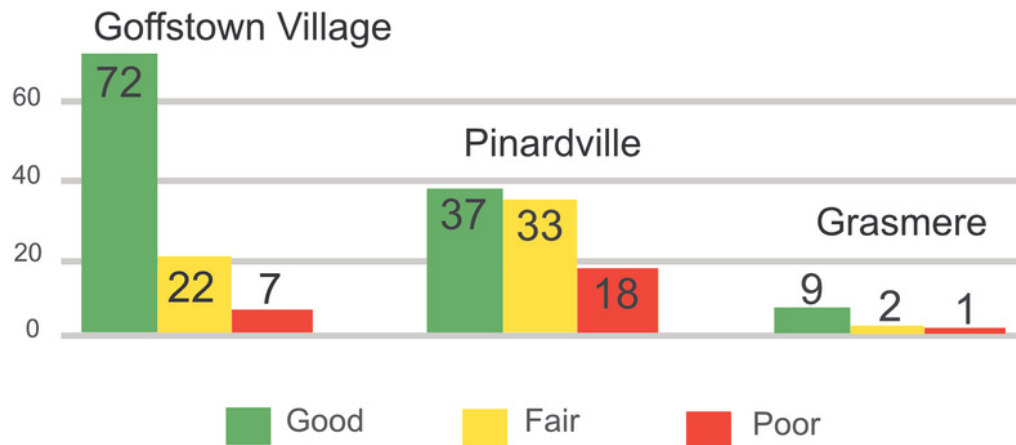


From left to right: Goffstown Village, Grasmere, Pinardville

Overview of Infrastructure Inventory

Totals and Conditions

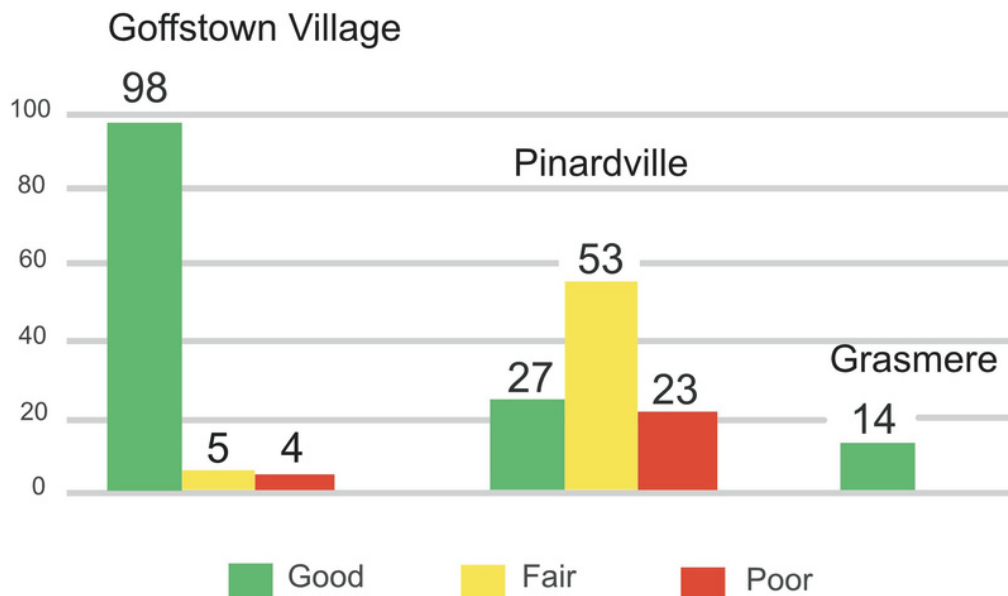
Number of Sidewalk Sections and Their Conditions



SNHPC

Sidewalk sections vary in length and the conditions displayed in the chart above reflect the most extreme conditions found in a section, but do not reflect the conditions of a section as a whole.

Number of Curb Ramps and Their Conditions

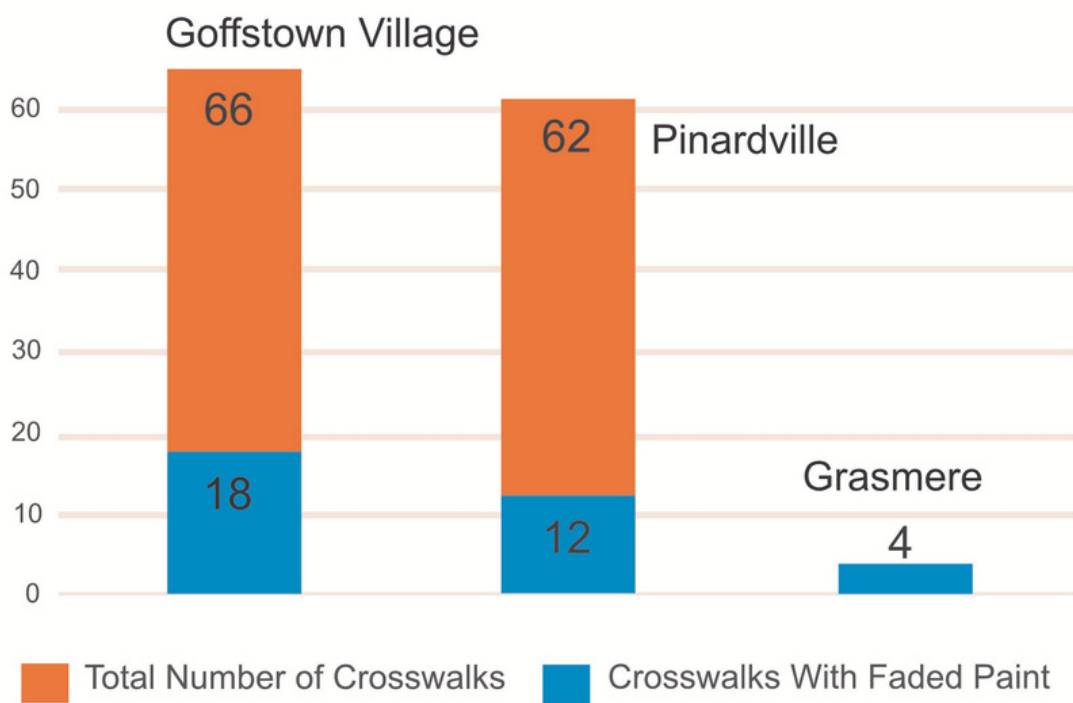


SNHPC

Overview of Infrastructure Inventory

Totals and Conditions (continued)

Total Number of Crosswalks Inventoried & Paint Condition



SNHPC

See tables at the end of this report for locations of infrastructure in poor condition, crosswalks with faded paint, and curb ramps that are not connected to crosswalks.

Photo Glossary for Terms and Conditions Included in this Report

Curb Ramp is Connected to Crosswalks: The SADES pedestrian infrastructure inventory distinguishes curb ramps that are connected to crosswalks for safe crossing after using a curb ramp.



Photo courtesy of NH SADES

The ramp on the left is connected to a crosswalk, while the ramp on the right is not connected to a crosswalk, which creates a less safe street crossing experience for pedestrians.

Detectable Warnings: Infrastructure such as pavers and tiles are built into a curb ramp for alerting pedestrians that they are entering a transition zone between sidewalk and street.

The image on the right depicts curb ramps on a pedestrian island that feature raised-bump detectable warnings built into each end of the ramp where the ramp transitions to the street.



Photo courtesy of NH SADES

Flush Conditions On and Off Ramp: The SADES pedestrian infrastructure inventory notes if curb ramp edges are level where curb ramps meet the street for safety and ease of use. Ramp edges that are not level with the street they connect to can present mobility challenges to pedestrians, especially those with impairments.



Photo courtesy of NH SADES

The ramp edge depicted on the left is level with the street, while the ramp edge on the right is not level with the street.

Lighting Utilities: Lighting such as nearby street lights and lights specifically designed to illuminate a crosswalk during lowlight hours.

The image on the right features a crosswalk that is illuminated in low-light conditions by an overhead streetlight



Photo courtesy of Google Street View

Missing Material: A sidewalk deterioration condition where portions of a sidewalk are no longer present.

The image on the right depicts an area of sidewalk that is missing material.



Photo courtesy of NH SADES

Pedestrian Actuated Facilities: Utilities such as push buttons, countdown timers, and walk signals that alert pedestrians when it is safe to cross a crosswalk.



Photos courtesy of NH SADES

The image on the left depicts a push button that actuates a walk signal like the one in the image on the right.

Pedestrian Crossing Signs: Signs placed at or before crosswalks to inform vehicle drivers that pedestrians may be crossing the road they are driving on.



Photo courtesy of NH SADES

The signs above use bright colors and the human form to alert drivers that pedestrians may be crossing within indicated crosswalk areas.

Sidewalk Section: Length of sidewalk being inventoried that is typically distinguished from other sidewalk sections by a curb ramp, street, or environmental features.

The image on the right features a sidewalk section (within green rectangle) that is distinguished from other sections of sidewalk as an outcome of having curb ramps and streets at each end.



Photo courtesy of Google Street View

Vertical Clearance: Minimum unobstructed vertical passage space along the sidewalk.



Photo courtesy of Google Street View

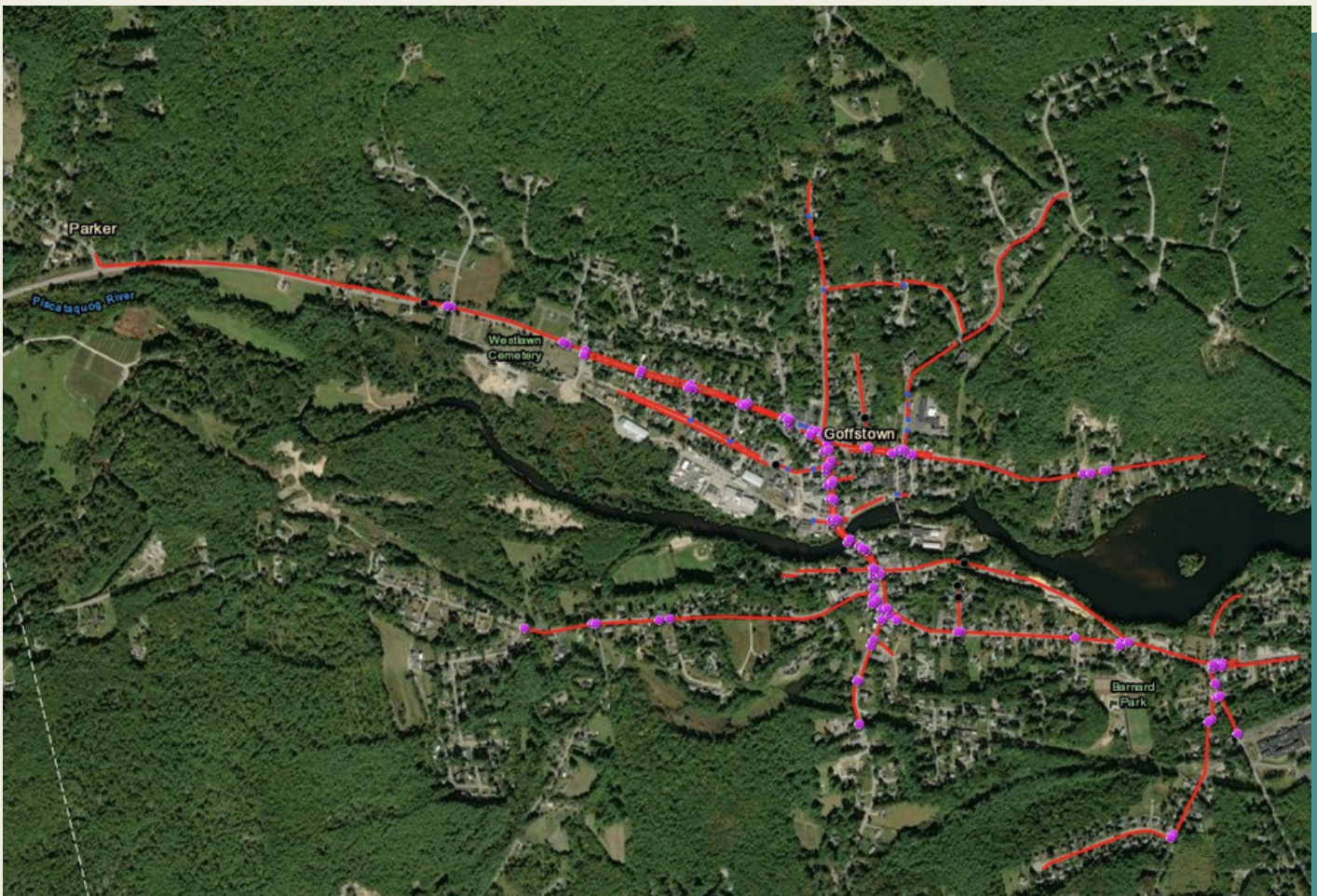
The tree branches in the image above impact vertical passage on the sidewalk adjacent to the trees. If vegetation is not trimmed, branches can impact sidewalk use for pedestrians whose height may exceed low hanging branches.

Goffstown Village Findings Overview

In September 2023, pedestrian infrastructure in Goffstown Village was assessed and documented in the NH SADES inventory.

The assessment documented:

- 101 sections of sidewalk (45,070 feet)
- 66 crosswalks
- 107 curb ramps



Courtesy of NH SADES

The red lines represent sidewalks inventoried. Each purple dot represents a curb ramp.

Goffstown Village Sidewalks

Sidewalks in Goffstown Village were typically in good condition, with only a few exceptions. The following conditions were observed for sidewalks not in good condition:

- 35 sections featured cracks and 6 featured missing material
- 29 sections of sidewalk were obstructed by objects such as utility poles, mailboxes, fixed signs, and vegetation
- 10 sections of sidewalk had a vertical clearance less than 80 inches
- The average minimum passable sidewalk width is 57 inches

The sidewalk below is located on Shirley Park Road. Plant overgrowth and uneven conditions make it unpassable, resulting in pedestrian travel on the adjacent road.



Photo: SNHPC

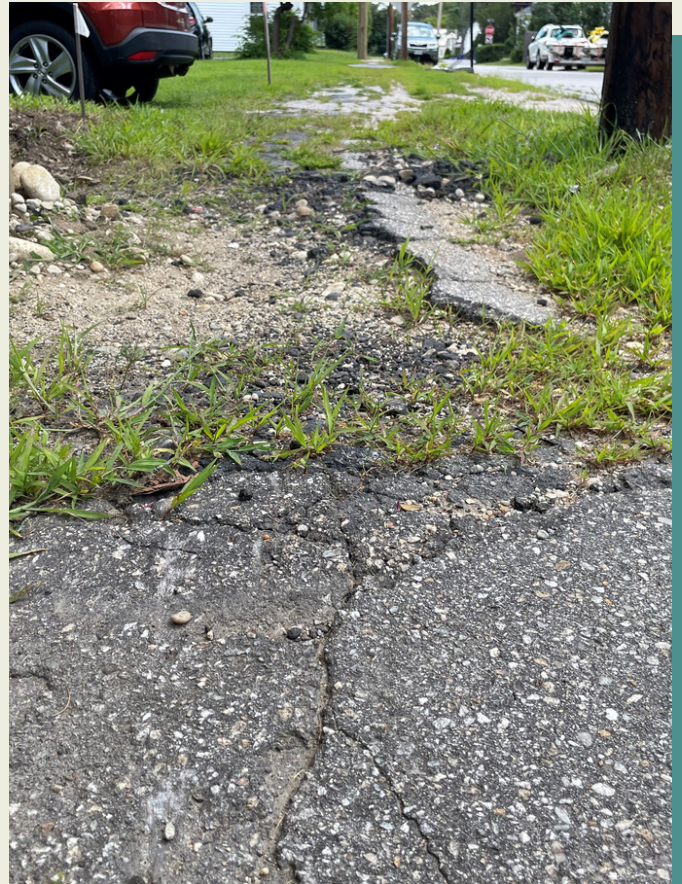


Photo: SNHPC

The sidewalk above is located on West Union Street, which is in poor condition due to missing material and cracks.

Goffstown Village Crosswalks and Curb Ramps

Out of the 66 crosswalks inventoried in Goffstown Village:

- 9 had pedestrian crossing signs present
- 22 had lighting utilities present
- None had pedestrian actuated utilities present

Out of the 107 curb ramps inventoried in Goffstown Village:

- 90 had detectable warnings
- 89 were connected to crosswalks
- 5 did not have flush conditions on and off ramp

The crosswalk below is on North Mast St and features a curb ramp that connects to a crosswalk that includes a pedestrian crossing sign.



Photo courtesy of Google Street View

Grasmere Findings Overview

In August 2023, pedestrian infrastructure in Grasmere was assessed and documented in the NH SADES inventory.

The assessment documented:

- 12 sections of sidewalk (6,737 feet)
- 4 crosswalks
- 14 curb ramps



Courtesy of NH SADES

The red lines represent sidewalks inventoried. Each purple dot represents a curb ramp.

Grasmere Sidewalks

Sidewalks in Grasmere were in mostly good condition, with a few exceptions. The following conditions were observed:

- 6 sections featured cracks
- 3 sections of sidewalk were obstructed by utility poles, vegetation, and a mailbox
- 2 sections of sidewalk had a vertical clearance less than 80 inches
- The average minimum passable sidewalk width was 52 inches

The image on the left features a sidewalk on Tibbetts Hill Road that is in fair condition. It has been designed to accommodate passage around mailboxes. In the image on the right, plant overgrowth and a mailbox prevent passage near the Tibbetts Hill Road intersection on Center St.



Photo courtesy of Google Street View



Photo: SNHPC

Grasmere Crosswalks and Curb Ramps

Out of the 4 crosswalks inventoried in Grasmere:

- None had pedestrian crossing signs present
- 2 had lighting utilities present
- None had pedestrian actuated utilities present

Out of the 14 curb ramps inventoried in Grasmere:

- 4 had detectable warnings
- 8 were connected to crosswalks
- 1 did not have flush conditions on and off ramp

The image below features a crosswalk on Center Street that is illuminated in lowlight conditions by an overhead streetlight.



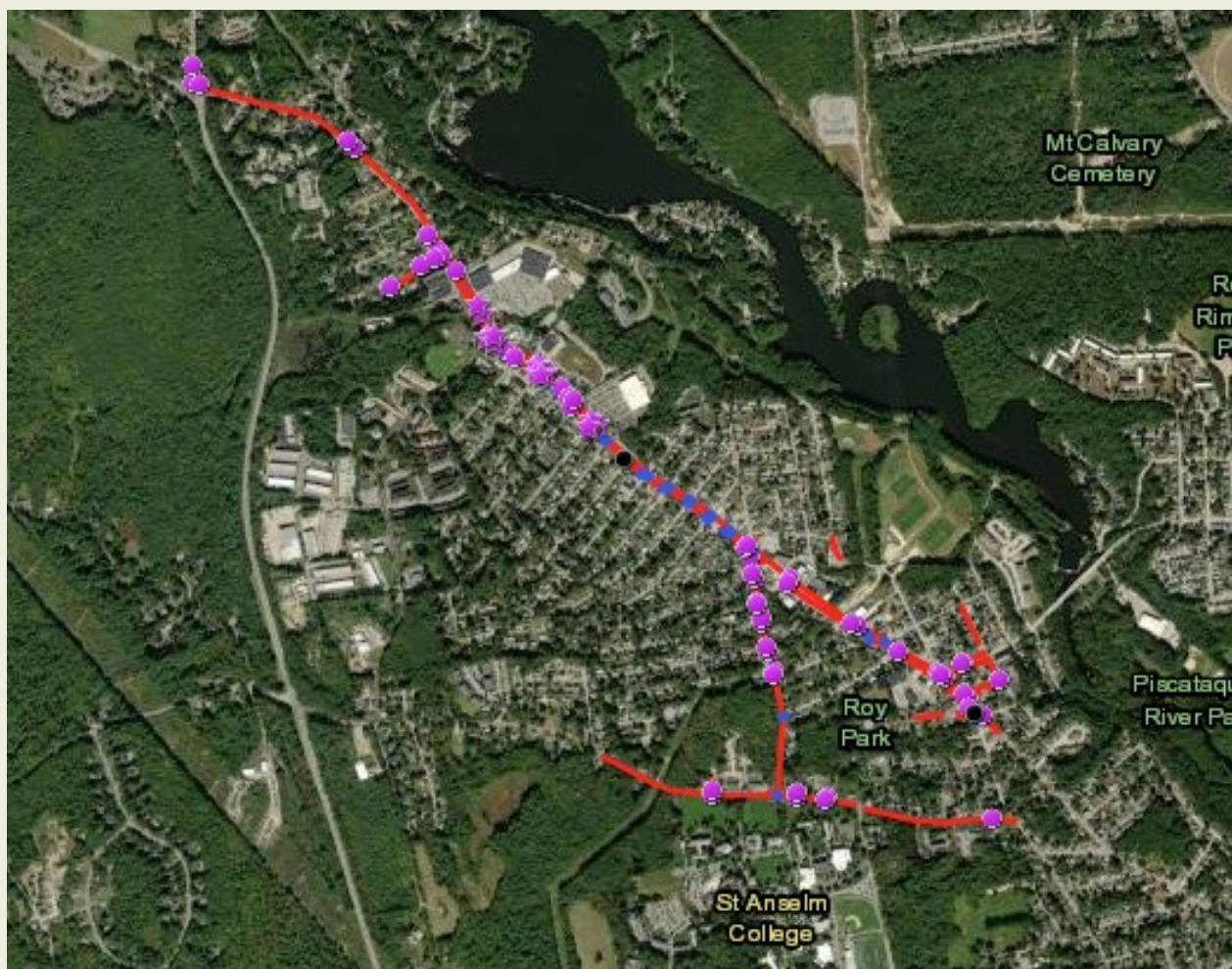
Photo courtesy of Google Street View

Pinardville Findings Overview

From September 2022 to August 2023, pedestrian infrastructure in Pinardville was assessed and documented in the NH SADES inventory.

The assessment documented:

- 88 Sections of sidewalk (24,361 feet)
- 62 crosswalks
- 103 curb ramps



Courtesy of NH SADES

The red lines represent sidewalks inventoried. Each purple dot represents a curb ramp.

Pinardville Sidewalks

Sidewalks in Pinardville were in mostly good condition, with a few exceptions. The following conditions were observed:

- 60 sections featured cracks and 3 sections were missing material
- 25 sections of sidewalk were obstructed by mailboxes, hydrants, vegetation, utility poles, and a sign
- 8 sections of sidewalk had a vertical clearance less than 80 inches
- The average minimum passable sidewalk width was 59 inches

The sidewalk below is located on College Road near the intersection with Roy Street, and is in good condition.



Photo courtesy of Google Street View



Photo: SNHPC

The sidewalk above is on Mast Road at the intersection with Laurier Street. The telephone pole reduces passable sidewalk width to 32 inches, which could pose an obstacle to a person with disabilities.

Pinardville Crosswalks and Curb Ramps

Out of the 62 crosswalks inventoried in Pinardville:

- 2 had pedestrian crossing signs present
- 41 had lighting utilities present
- 14 had pedestrian actuated utilities present

Out of the 103 curb ramps inventoried in Pinardville:

- 40 had detectable warnings
- 84 were connected to crosswalks
- 34 did not have flush conditions on and off ramp

The crosswalk pictured below is located on Mast Road, and is one of 57 crosswalks without pedestrian crossing signs in Pinardville.



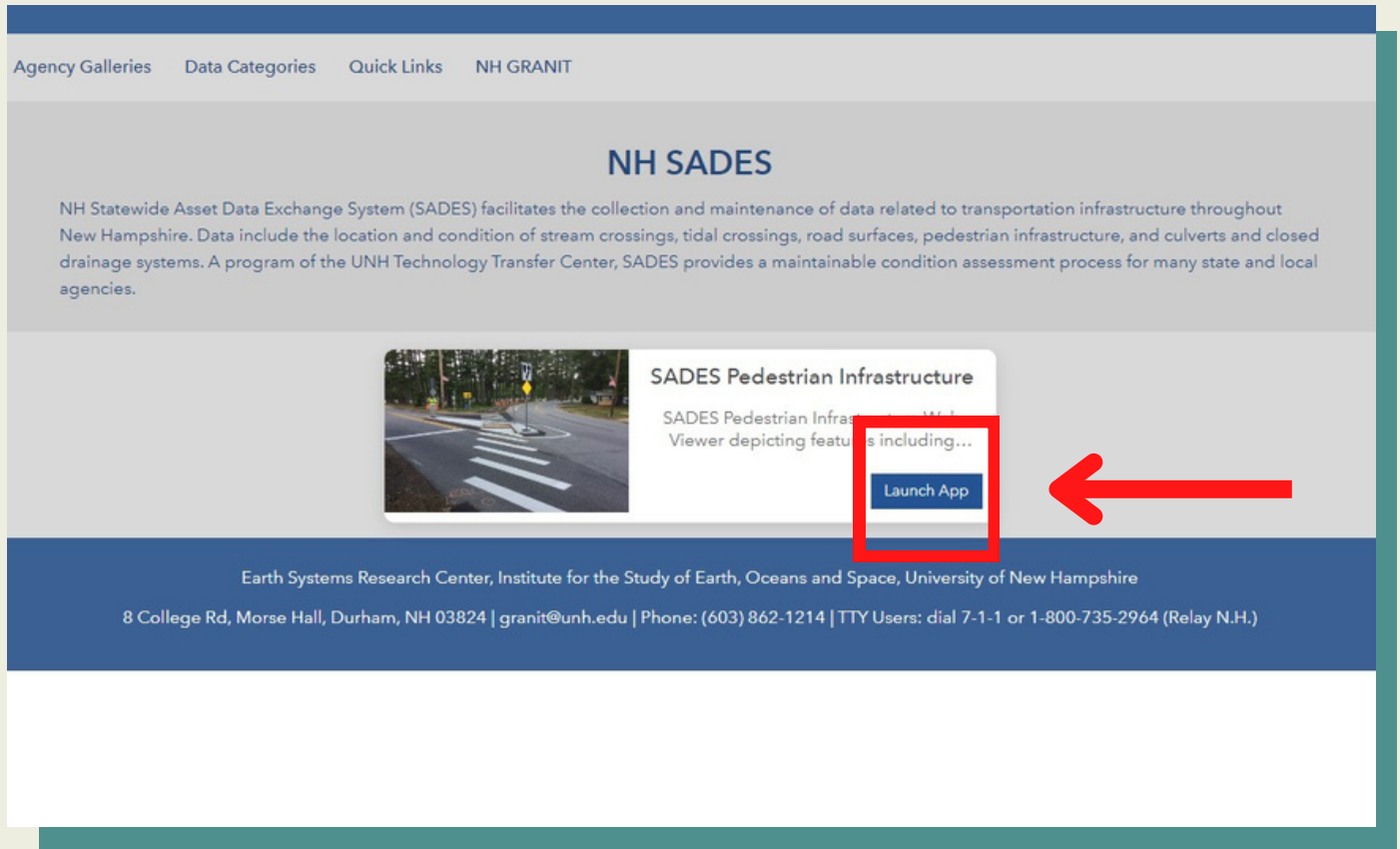
Photo courtesy of Google Street View

NHDOT SADES Web Viewer

You can learn more about SADES-inventoried infrastructure by visiting the interactive SADES Pedestrian Infrastructure Web Viewer at the link below.

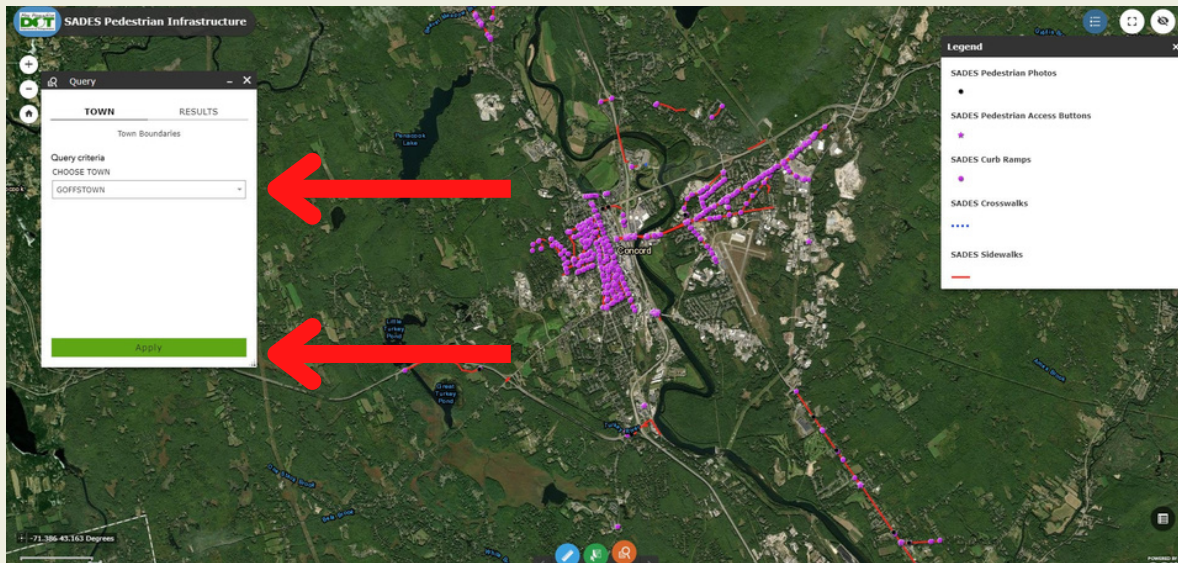
<https://new-hampshire-geodata-portal-1-nhgranit.hub.arcgis.com/pages/nhsades>

Select the Launch App button highlighted in the image below to open the web viewer.

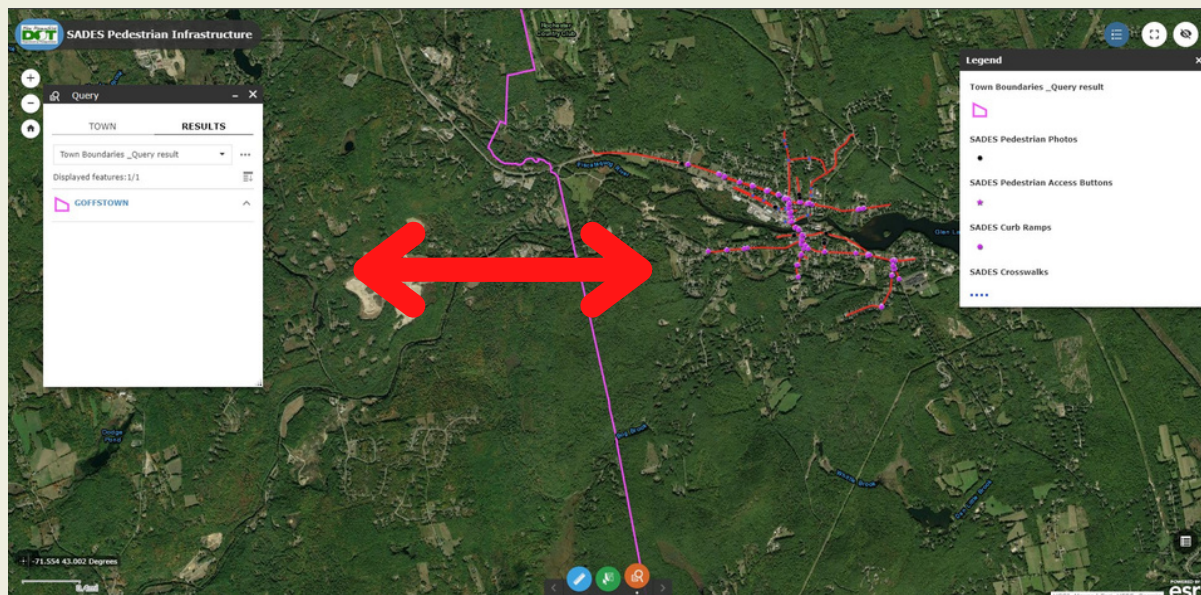


Learn More About Inventoried Infrastructure by Exploring Data From the SADES Web Viewer

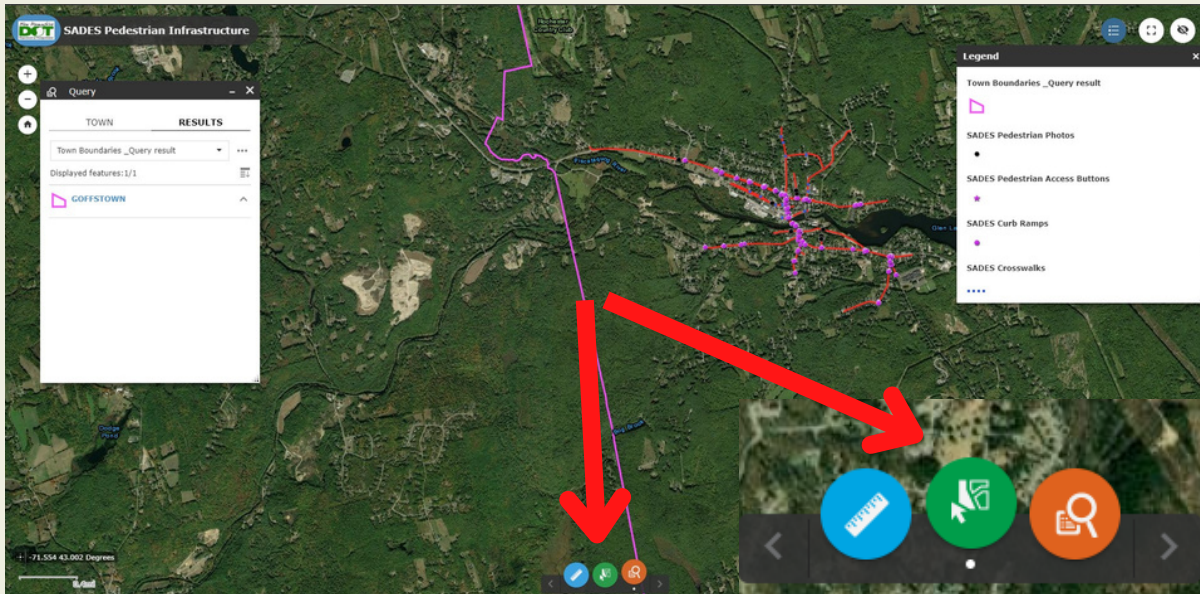
1. In the Query window choose a town from the drop down menu and select apply.



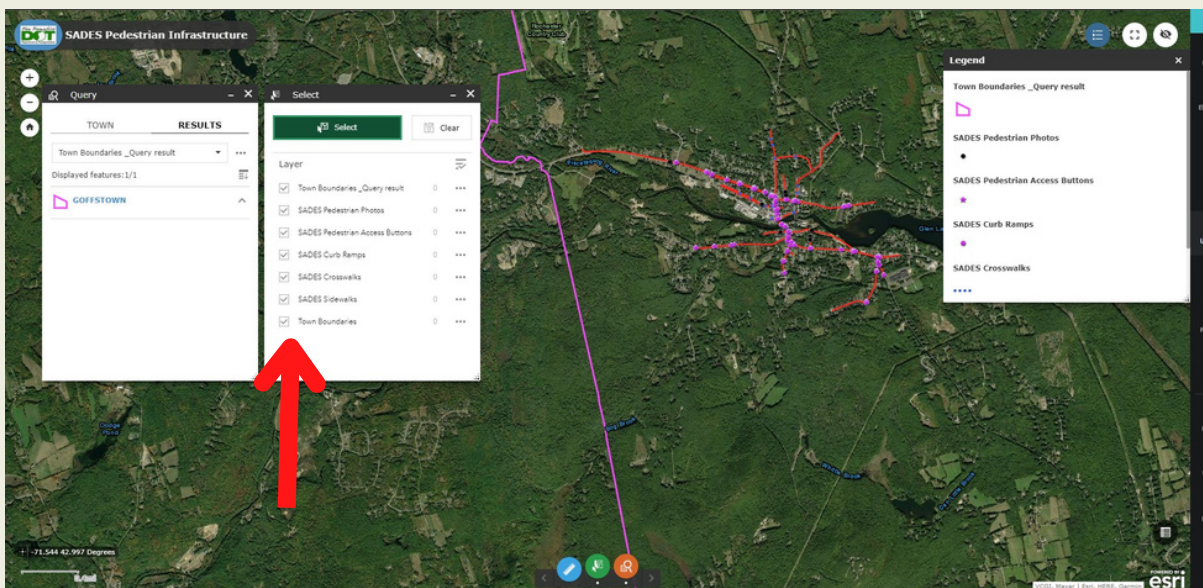
2. Use your mouse to navigate to the area you are interested in learning about. Ensure to position this area on the right side of the screen so you can select the area in its entirety while leaving room for the Select Window in the next step.



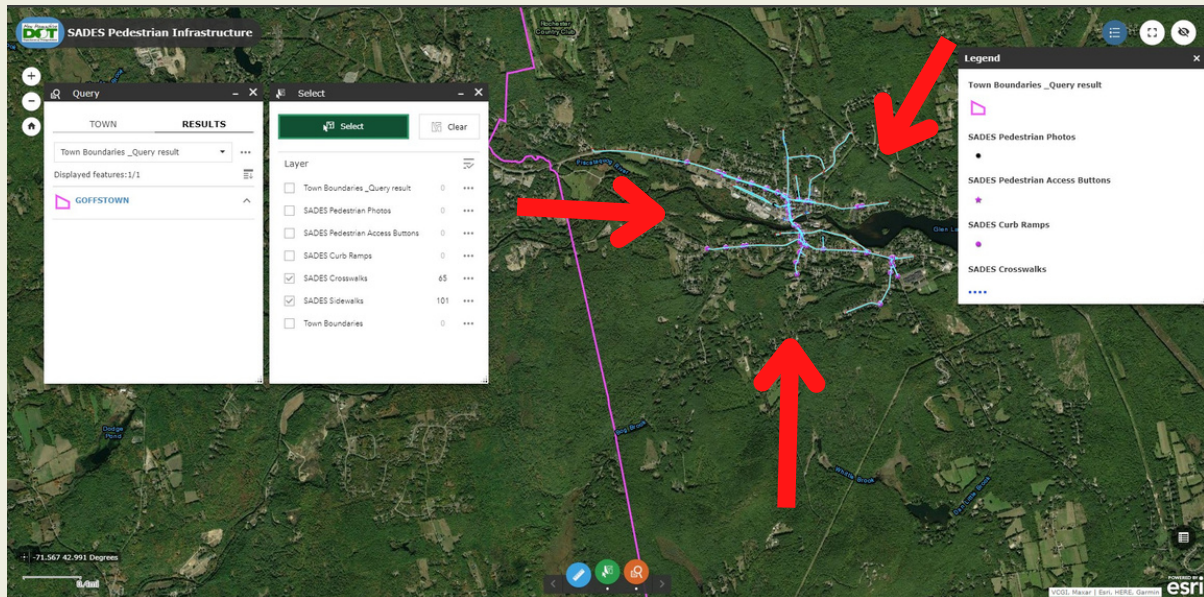
3. At the bottom and center of the web map you will see a green circular button with an arrow and map depicted on it. This is the “Select” button. Click on the Select button to open the Select Window.



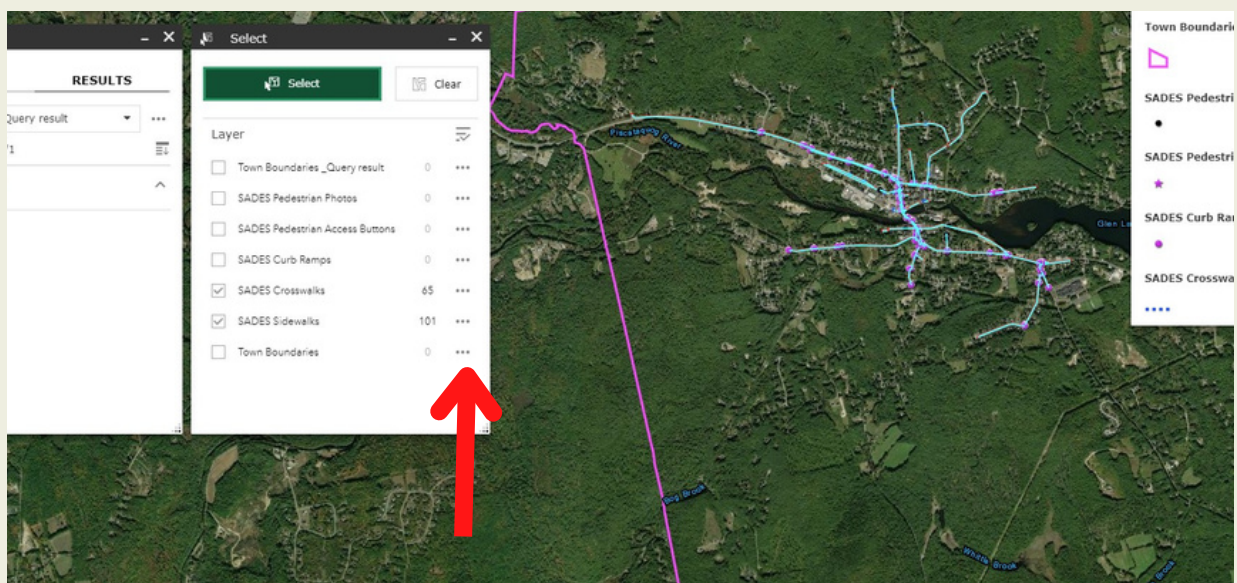
4. Now that the Select Window is open you will see a list of features that have been preselected with checked boxes on the left edge of the window. You must unselect features that you are not interested in learning about, which leaves the features that you are interested in learning about selected.



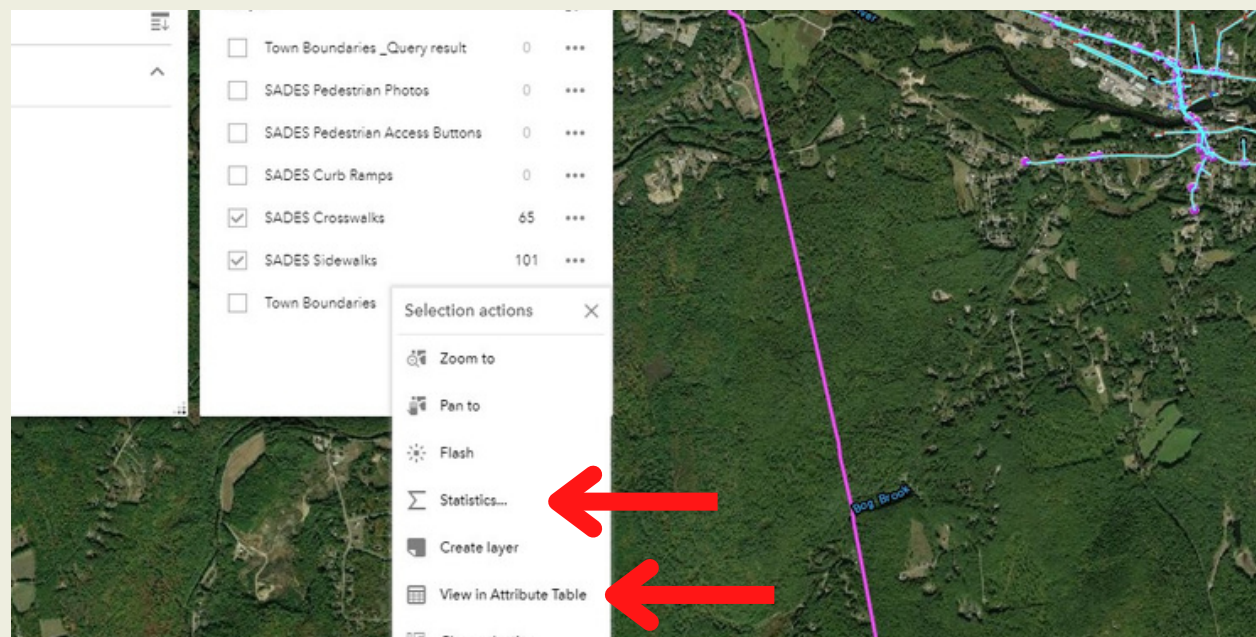
5. Now that you have features selected you may select your area of interest for further exploration by positioning your mouse at a top corner of your area, click and drag the expanding blue box until the inventoried infrastructure (features you selected) in your area are highlighted in blue.



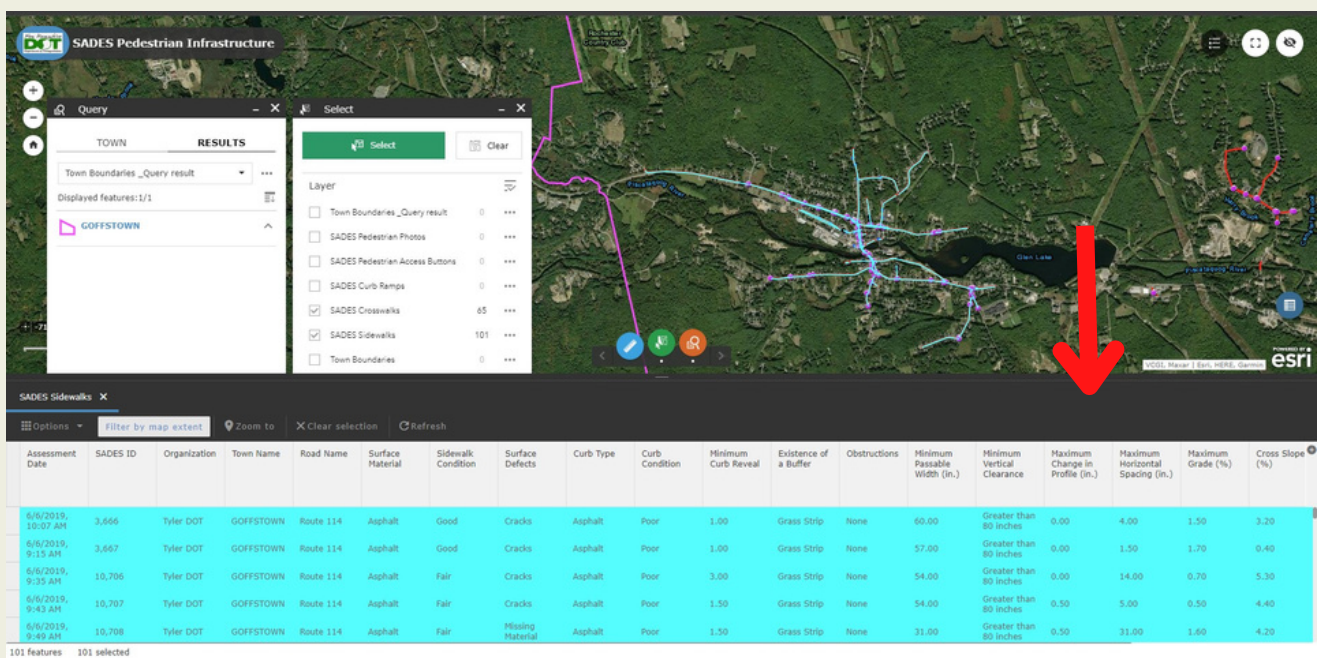
6. To learn more about a feature you have selected click on the three dots on the right edge of the Select Window that align with the feature you have chosen to learn more about.



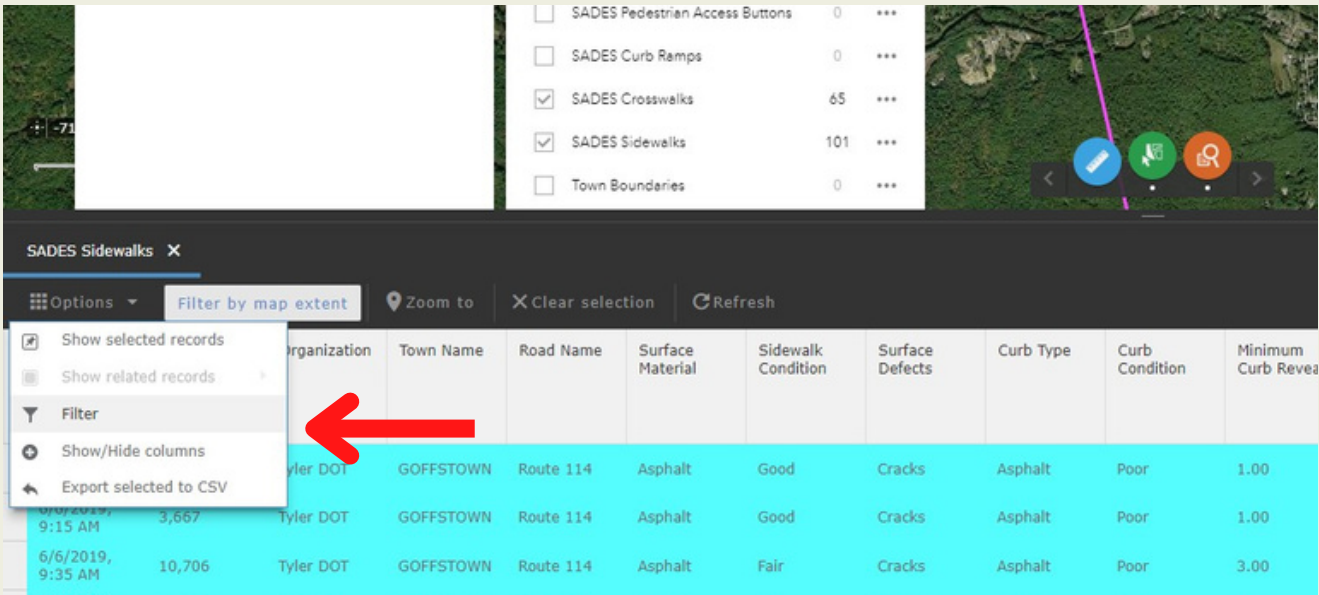
7. You will now see the Selection Actions window. Two options for learning more about features in your area of interest are Statistics for a quantitative overview of a feature; or View in Attribute Table for greater detail about a feature.



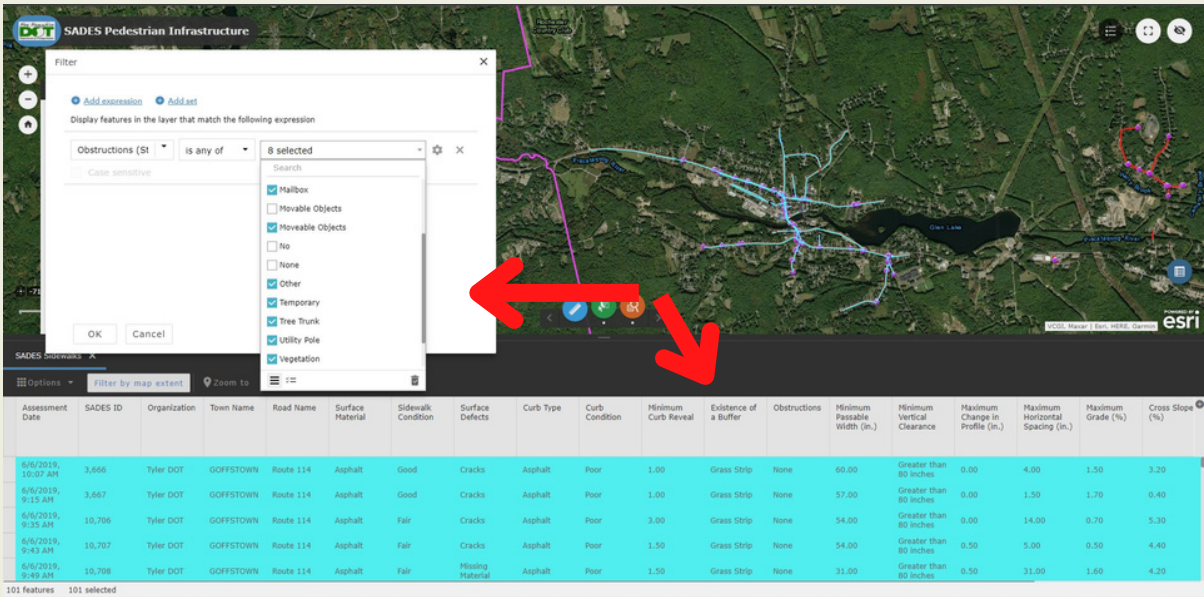
8. The Attribute Table opens at the bottom of the map and data can be viewed by scrolling up and down and right and left.



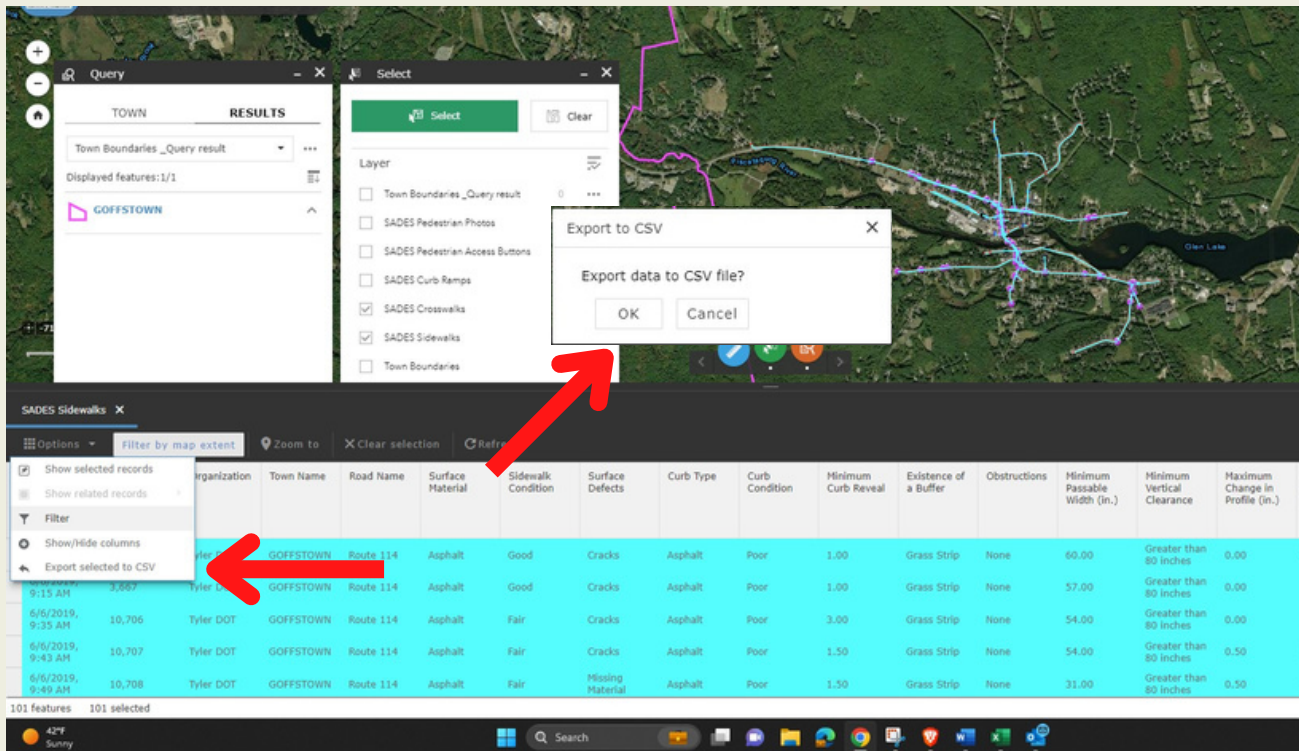
9. The Attribute Table also allows for a customizable data query and data exportation. Select Options in the upper left corner and then select Filter to customize your data query by using the Expression Builder.



10. If you would like to learn about sidewalk obstructions, select Add Expression. Three fields are now visible. In the field on the left you can scroll down the list of options until you find Obstructions. Select Obstructions. Move to the middle field and scroll down the list of options and select “is any of”. Move to the field on the right edge and scroll down and select the obstructions that you want to learn more about. Click the Ok button at the bottom of the window to filter your selections. Your selections have now been filtered and are now included within the Attribute Table.



11. To export the data you have filtered, select the Options Button in the upper left corner of the attribute table. Select Export All to CSV in the Options button window. Select the OK button in the Export to CSV window. You may now navigate to your downloads folder to locate and open your exported data.



Poor Sidewalk Conditions and Locations

The following tables include information about sidewalk sections that have been graded as having poor conditions in each location. Conditions and locations of conditions are shared in each table.

Pinardville	
Road Name	Defects and Location
Mast Rd	Cracks between Daniel Plummer Rd and 548 Mast Rd (Tire Warehouse).
	Cracks in front of 565 Mast Rd (Mobil gas station).
	Cracks between Joffre St and Haig St in front of car wash.
	Cracks throughout sidewalk between Haig St and Pershing St and especially concentrated in front of 594 Mast Rd.
	Missing Material between Foch St and Pershing St in front of 600 and 602 Mast Rd.
	Cracks in front of 649 (Shaking Crab) and 651 Mast Rd (Cornerstone Baptist Church).
	Cracks in front of 665 Mast Rd (Valvoline).
	Missing Material and cracks between 712 (Jacques Flower Shop) and 690 Mast Rd (Family Dollar).
	Cracks at the corner of Roy St and Mast Rd and areas in front of 712 Mast Rd (Jacques Flower Shop).
	Cracks throughout sidewalk from Desaulnier St to corner of Roy St.
	Cracks throughout sidewalk from 742 (Pizza 911) to 762 Mast Rd (Ace Hardware).
	Missing Material from corner of Theophile St to area in front of 533 Mast Rd.
Pinard St	Cracks throughout sidewalk from Edmond St to Davignon St on north side of Pinard St.
Edmond St	Cracks throughout sidewalk from 114 to 134 Edmond St.
Henriette St	Cracks on sidewalk in front of parking lot on north side of Henriette St.
Theophile St	Cracks on the corner of Mast Rd and Theophile St adjacent to side of 765 Mast Rd.
Rosemont St	Cracks in front of 12 Rosemont St.
Rosemont St	Cracks in front of 16 Rosemont St.

Poor Sidewalk Conditions and Locations (Continued)

Goffstown Village	
Road Name	Defects and Location
Elm St	Cracks in front of 15 and 17 Elm St.
Elm St	Cracks between Cedar Way and Lakeview Lane.
Elm St	Missing material between 114 and 118 Elm St. Cracks between 98 and 102 Elm St.
Church St	Cracks between 14 and 10 Church St.
Prospect St	Cracks in front of 9 Prospect St.
South Mast Rd	Missing material in front of 119 South Mast Rd.
West Union St	Missing material in front of 8 West Union St.

Grasmere	
Road Name	Defects and Location
Center St	Cracks in front of 22 Center St where driveway and sidewalk overlap.

Locations of Crosswalks With Faded Paint

Pinardville
Theophile St and Mast Rd.
Mast Rd and Libbey St.
Orchard St and Mast Rd.
Foch St and Mast Rd.
Haig St and Mast Rd.
Mast Rd and Lynchville Park Rd.
Lynchville Park Rd and Mast Rd.
Mast Rd and Moose Club Park Rd.
Moose Club Park Rd and Mast Rd.
Warren Ave and Coolege Rd.
College Rd and Desaulnier St.
Preston St and Mast Rd.

Grasmere
Center St at roundabout.
Juniper Dr and Center St.
Center St at Tibbetts Hill Rd.
Center St in front of Grasmere Town Hall.

Locations of Crosswalks With Faded Paint (Continued)

Goffstown Village
Reed St and Elm St.
Knollcrest Rd and Mountain Rd.
High St and N Mast Rd.
Main St and Elm St.
Summer St and N Mast St.
Elm St and Main St.
Whipple Ln and High St.
Mountain Rd south of Placid Woods Dr.
Bell Rd and New Boston Rd.
Maple Ave crosswalk at elementary school parking lot entry and exit.
South Mast Rd and Shirley Park Rd.
Smith Dr and High St.
Bog Rd and New Boston Rd.
Wallace Rd and Lamson Ave.
Adjacent to 66 High St.
Cottage St and Elm St.
North Mast St in front of Sully's Superette (2 sections)

Locations of Curb Ramps Not Connected to Crosswalks

Pinardville
Northwest corner of Danis Park Rd and Mast Rd.
Northeast corner of Danis Park Rd and Mast Rd.
East side of Danis Park Rd where the sidewalk ends.
Southwest corner of Marion St and Mast Rd.
Entry and exit lanes at 570 Mast Rd (Dunkin Donuts).
Area that spans parking lot in front of 591 Mast Rd (Allard Cleaning Products).
Southeast corner of Mystic Brook Way and Mast Rd.
Northeast corner of Mystic Brook Way and Mast Rd.
Northwest Corner of Pershing St and Mast Rd.
Curb ramps on each side of the parking lot entry and exit lane at 711 Mast Rd (O'Reilly Auto Parts).
Northwest and Northeast corners on Davignon St and Pinard St.
Curb ramp on either side of driveway at 7 St Anselm Dr (NH Institute of Politics).

Grasmere
Curb ramp at Grasmere Town Hall parking lot entry and exit lane.
Curb ramp at 147 Henry Bridge Rd (red shed).
Curb ramp in front of 30 Center St.
Curb ramp in front of 49 Juniper Dr.
Northwest corner of Center St and Juniper Dr.

Locations of Curb Ramps Not Connected to Crosswalks (Continued)

Goffstown Village
Southeast and southwest corners of Elm St and Cedar Way.
Curb ramp in front of 38 Main St (Gordon E. Burns Insurance Agency).
Curb ramps (2) at each side parking lot entry of 41 Main St (State Farm).
Curb ramp on Carr Ct on of 58 Carr Ct.
Curb ramps (2) on each side of Cumberland Farms entry and exit lanes on Mountain Rd.
Curb ramps (2) on each side of Cumberland Farms entry and exit lanes on S Mast Rd.
Southeast corner of Hermsdorf Ave and New Boston Rd.
Northwest corner of Washington St and Mountain Rd.
Southeast corner of Mountain Rd and Knollcrest Rd.
Northeast corner of S Mast Rd and E Union St.
Curb ramps (2) on each corner of Mast Rd and Shirley Park Rd.
Curb ramps (2) on each corner of Worthley Hill Rd and Tyler Dr.

Locations of Curb Ramps In Poor Condition

Pinardville
Northwest corner of Danis Park Rd and Mast Rd.
Southwest corner of Marion St and Mast Rd.
Southwest corner of Daniel Plummer Rd and Mast Rd.
Northwest corner of Daniel Plummer Rd and Mast Rd.
Northwest corner of Abignon Way and Mast Rd.
Curb ramp on west side of Mast Rd (connected to crosswalk across from elementary school).
Northeast corner of Pinard St and Mast Rd.
Southeast corner of Pinard St and Mast Rd.
Northeast corner of Henriette St and Mast Rd.
Southwest corner of Rosemont St and Mast Rd.

Goffstown Village
Southwest corner of Cottage St and Elm St.
Northeast corner of Maple St and Elm St.
Northwest corner of Maple St and Elm St.
Southeast curb ramp at Cumberland Farms entry only lane on South - Mast Rd.