



N.H. S.A.D.E.S.

NEW HAMPSHIRE'S
STATEWIDE ASSET DATA EXCHANGE SYSTEM

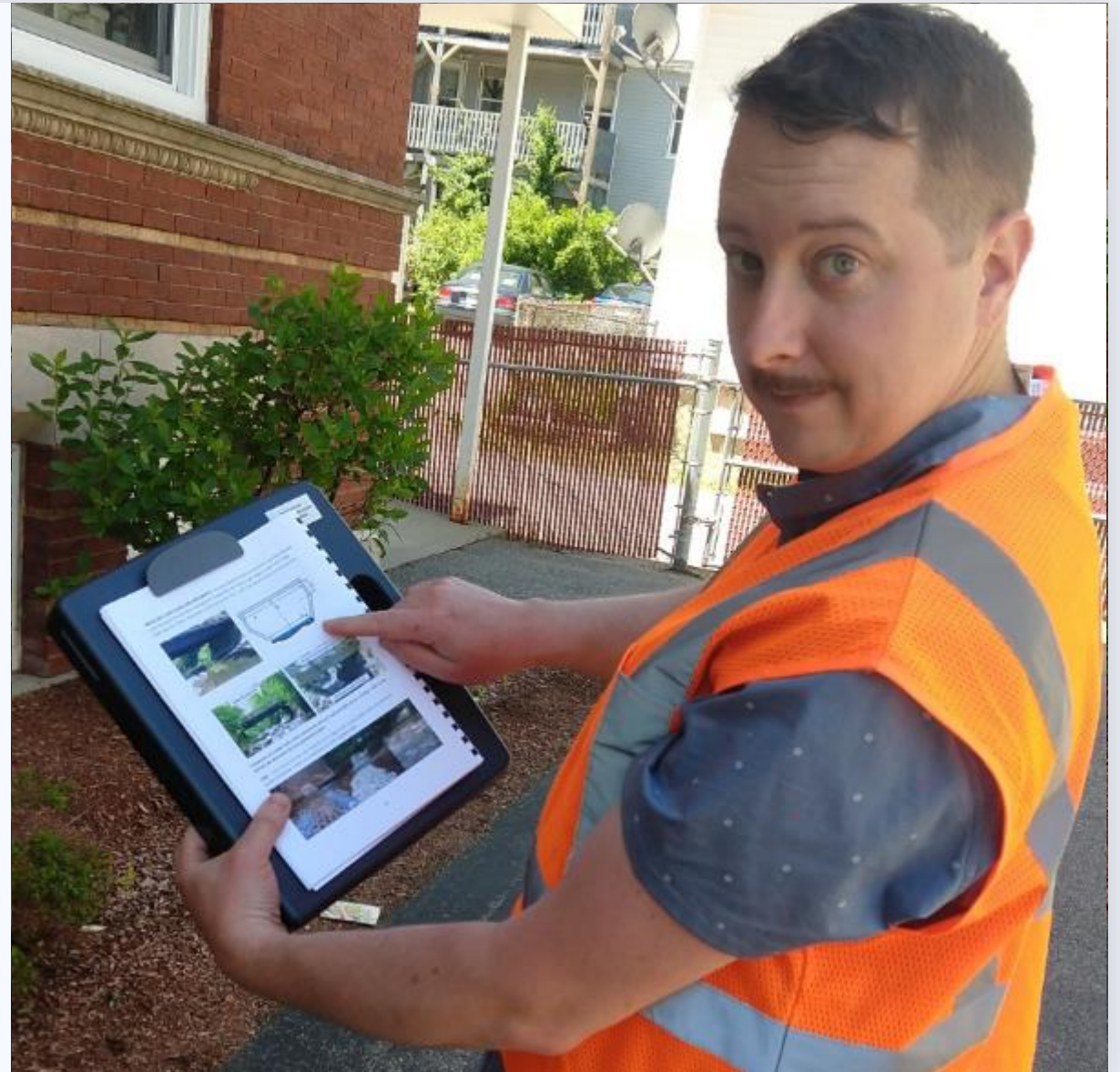


WHAT IS THE STATEWIDE ASSET DATA EXCHANGE SYSTEM (SADES)...

"SADES establishes a primary transportation inventory of assets including a maintainable condition assessment process for many state and local agencies.

Its unique approach to statewide asset management efficiently utilizes modern technology and joins efforts for the common good of accurate and sustainable data collection."

- Source: sades.com/about





How SADES Works...

Advancements in technology and software make it possible to efficiently collect and manage asset data with tools that are easy to use for any agency.

ESRI (a geographic information system company) software, ArcDesktop and ArcOnline, allows anyone with a smart phone or tablet to have access to a database for quick and mobile management and input of data.



SADES IS A PARTNERSHIP OF



New Hampshire
Technology Transfer Center



SADES IS
MANAGED BY

THE **UNH**
TECHNOLOGY
TRANSFER
CENTER (**T2**)



New Hampshire
Technology Transfer Center



SADES IS
MANAGED BY

THE **UNH**
TECHNOLOGY
TRANSFER
CENTER (**T2**)

Chris Dowd
SADES Manager

Technology Transfer Center
33 Academic Way
Durham, NH 03824
chris@nhsades.com

Office: (603) 862-5489



**T2 PROVIDES
ASSISTANCE TO
REGIONAL
PLANNING
COMMISSIONS
THROUGH SADES**

1. Software and Hardware
2. Data Collection Protocol
3. Database Management
4. Data Access and Sharing
5. Technical Assistance
6. Protocol Training



SADES DATA COLLECTION PRODUCTS CURRENTLY AVAILABLE THROUGH SOUTHERN NEW HAMPSHIRE PLANNING COMMISSION

STEAM CROSSINGS	ROAD SURFACE MANAGEMENT	PEDESTRIAN INFRASTRUCTURE	CLOSED DRAINAGE SYSTEMS
Available Since 2014	Available Since 2015	Available Since 2015	Available Since 2018
Over 13,000 Assessments	1,584 Miles of Locally Assessed	4,000 Sidewalks & 2,300 Crosswalks	More Than 40k Pipes Assessed



STREAM CROSSINGS AT A GLANCE...

SNHPC staff conduct field assessments to document structure and condition of select stream crossings in your town.

Data collected is then added to the state-wide stream crossings map for access and use in asset management and planning activities.

SNHPC staff can also provide towns with stream crossing detail sheets and condition reports.





STREAM CROSSINGS PROCESS SYNOPSIS ...

SNHPC works with town engineer / road agent to identify stream crossings where data is needed.

SNHPC staff use the SADES protocol to collect data using ArcGIS Online at the site of the stream crossing.

NHGS conducts a quality control check of the data to ensure accuracy.

NHGS adds collected data to the shared SADES stream crossing GIS map for local use and reference.

SNHPC develops a report for use by towns as desired.





STREAM CROSSINGS ASSESSMENT SEASON

SNHPC has the capacity to collect stream crossing data between June and September. SNHPC can collect field data for approximately 60 crossing per season.



STREAM CROSSINGS VULNERABILITY ASSESSMENT MAP





Southern New Hampshire
PLANNING COMMISSION

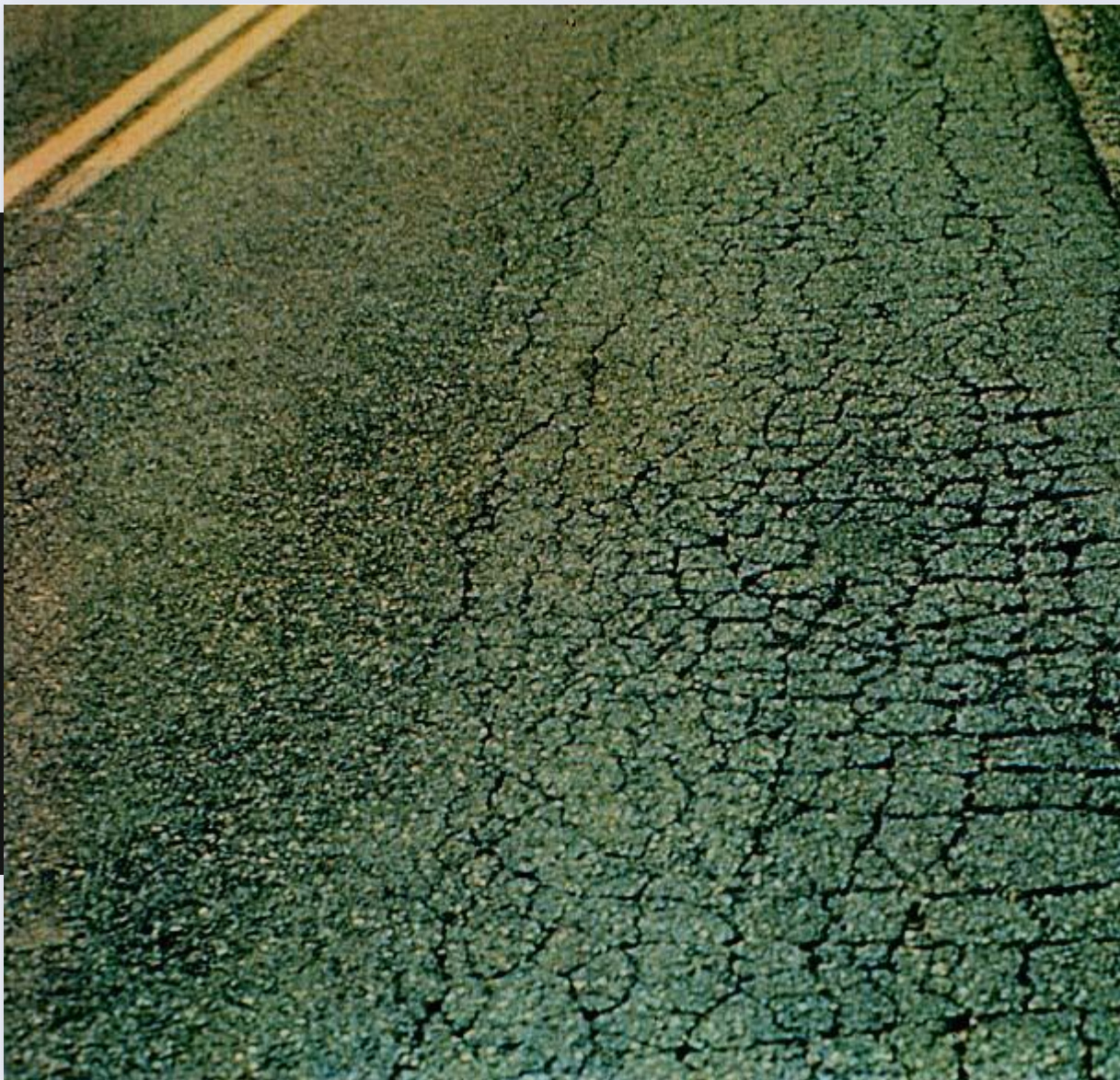
438 Dubuque Street
Manchester, NH 03102
Phone: 603-669-4664
Fax: 603-669-4350

[About SNHPC](#) [Community & Economic Development](#) [Environmental & Energy Planning](#) [GIS Services](#) [Transportation](#)

Working Together
for the Future of
Southern New Hampshire







RSMS - ROAD SURFACE MANAGEMENT SYSTEM

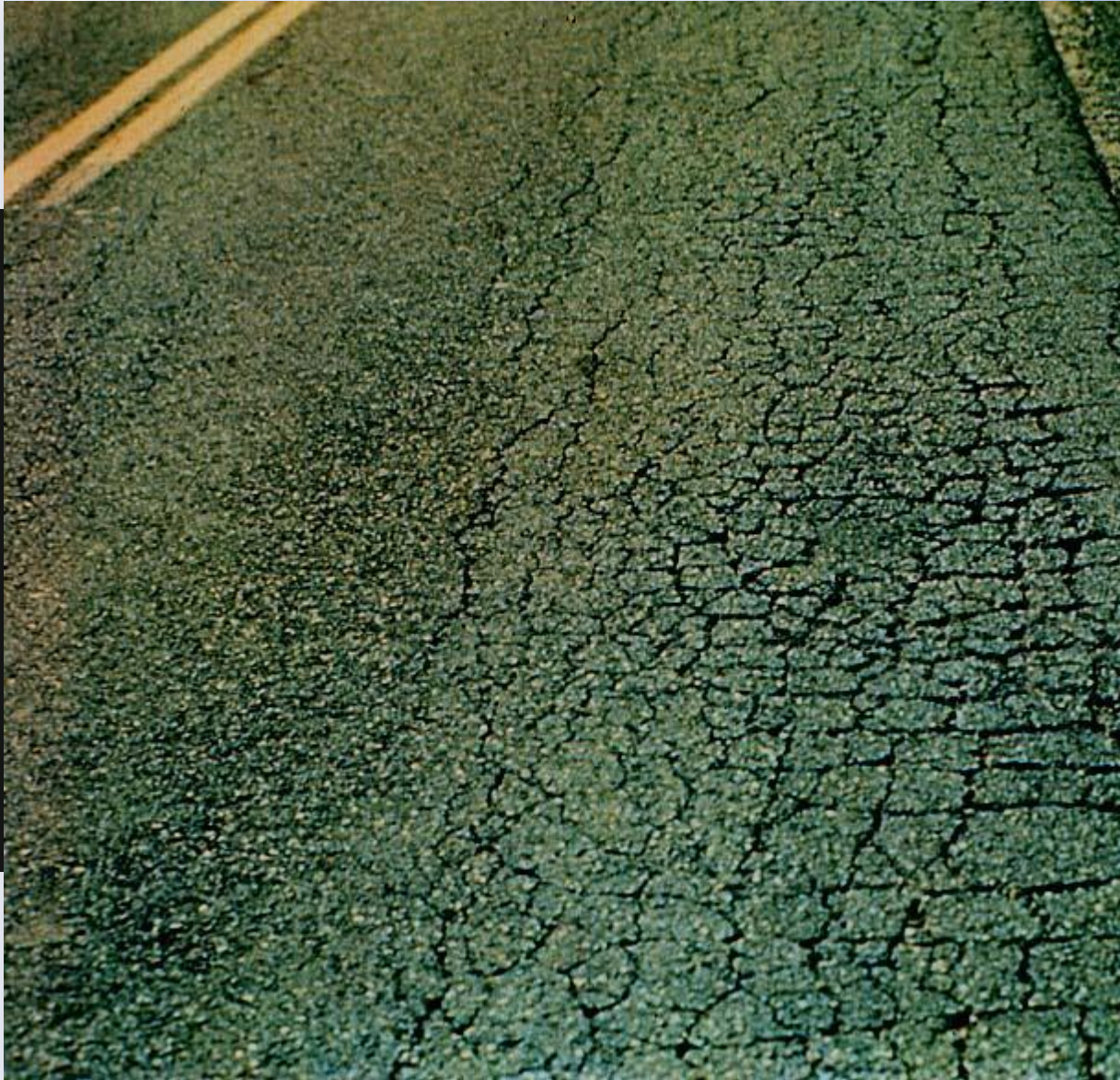
SNHPC has the capacity to conduct a windshield survey of pavement conditions of all town maintained roads.

Road conditions are uploaded into the statewide RSMS software to generate a report of possible repair strategies and prioritization of maintenance.

Road conditions are documented in quarter mile segments.

SNHPC meet with town staff for a closeout discussion of results and to answer any questions the town may have about the data.

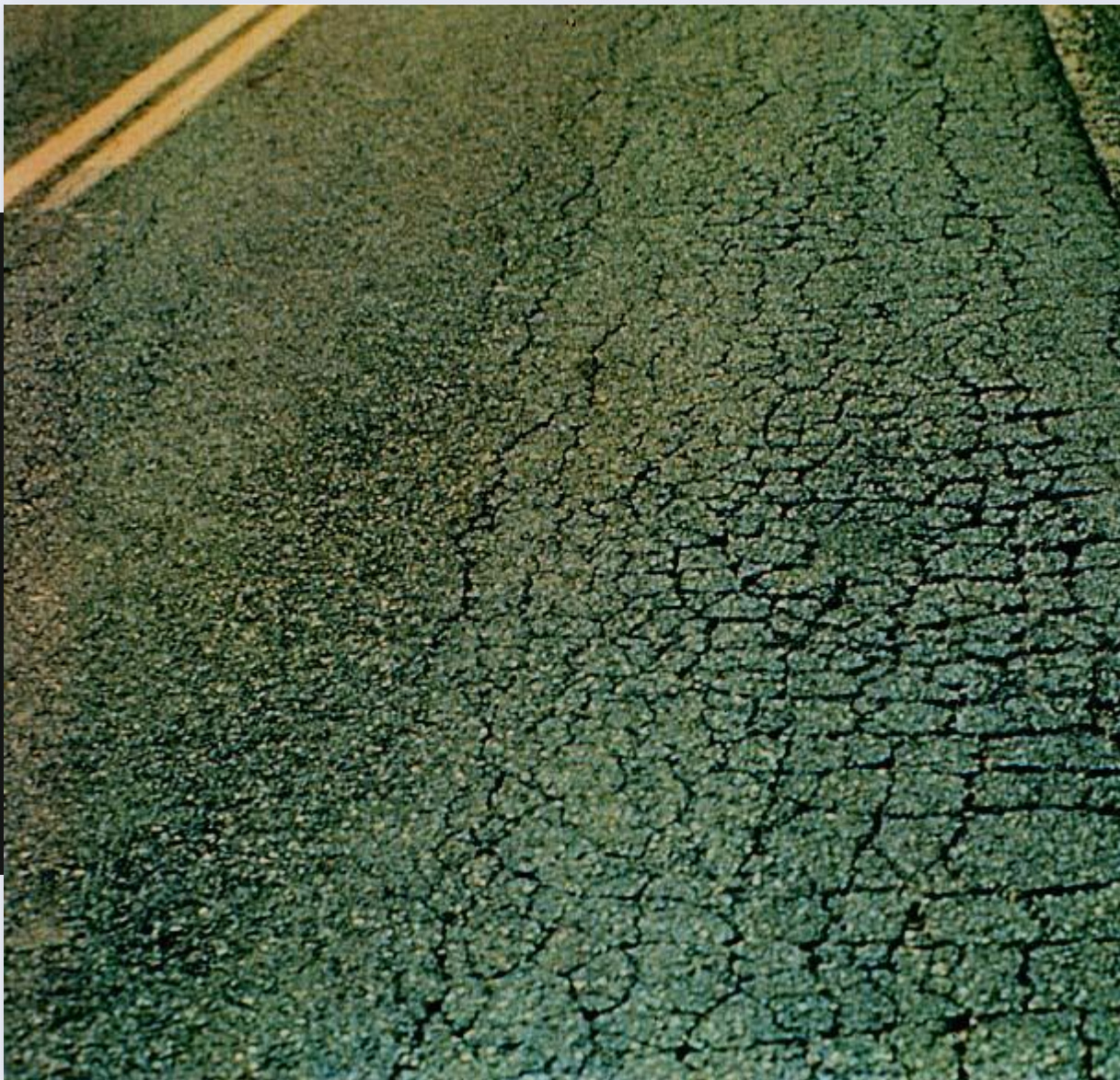




RSMS - ROAD SURFACE MANAGEMENT SYSTEM

Crocodile Cracking...

What is that!



RSMS – HOW LONG DOES AN ASSESSMENT TAKE...

SNHPC can collect approximately 10 miles of road condition data per day.

RSMS projects take between six to nine months to complete.

For municipalities with an interest in conducting an RSMS assessment, please contact:

Adam Hlasny, Senior Transportation Planner

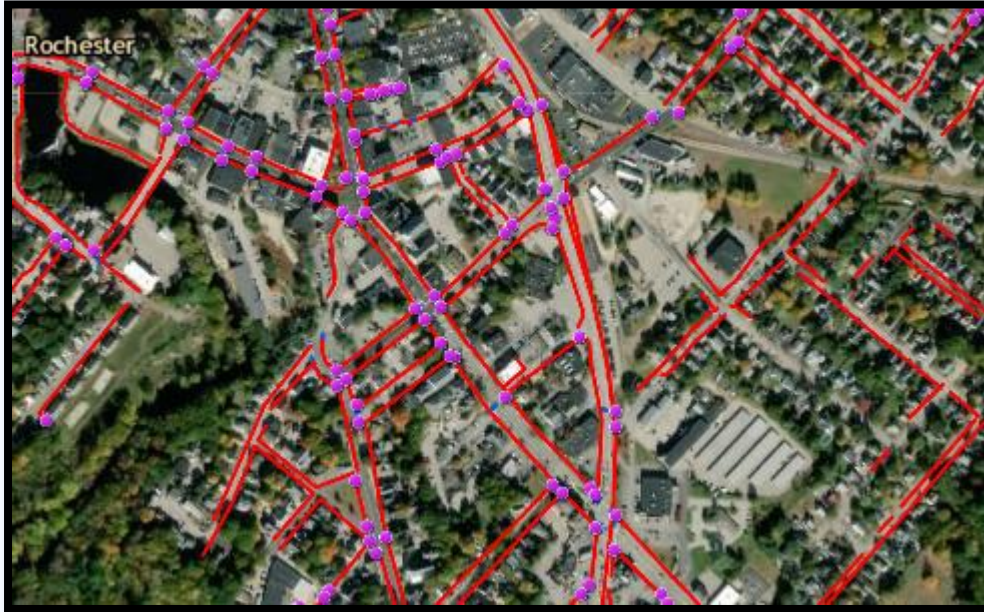
Email: ahlasny@snhpc.org

Phone: (603) 669-4664

PEDESTRIAN INFRASTRUCTURE

&

CLOSED DRAINAGE SYSTEMS



PEDESTRIAN INFRASTRUCTURE

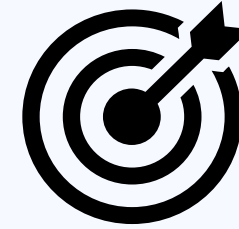
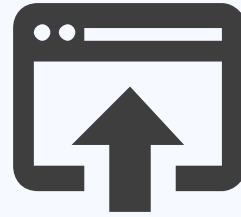
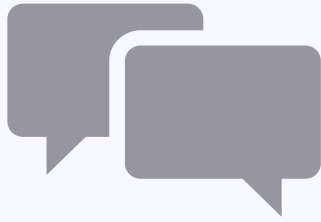
- Sidewalks, Curbs, Ramps,
- & Crosswalks



CLOSED DRAINAGE SYSTEMS

- Inlets, Outlets, Pipes,
- & Drainage Structures

SADES PROJECT "ROADMAP"



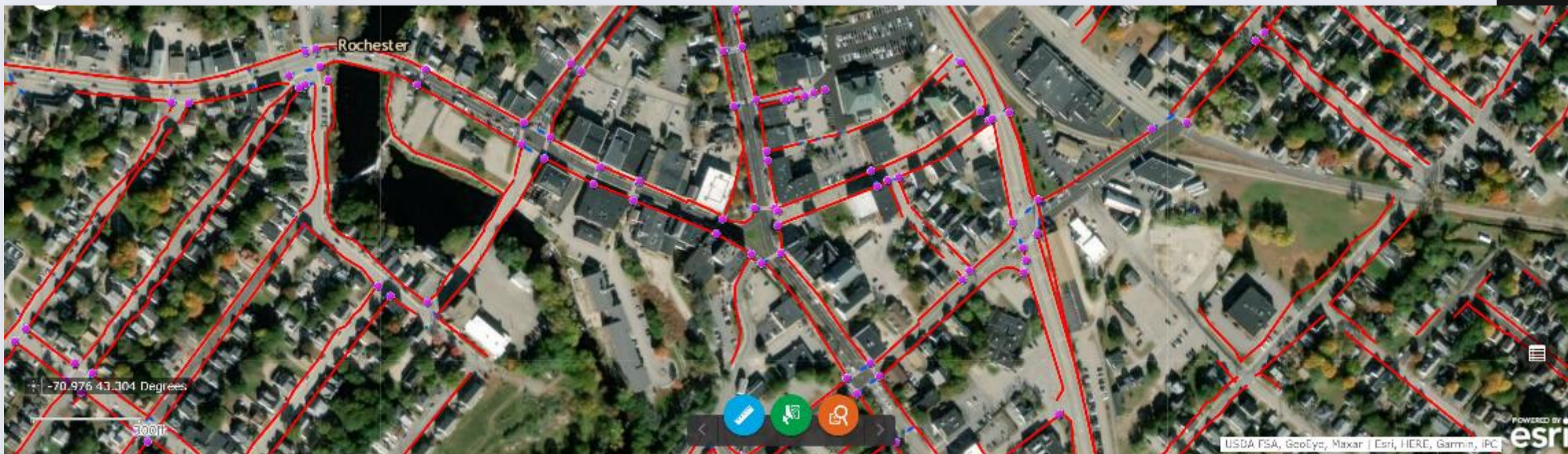
Member community approaches SNHPC with a request for field data collection.

SNHPC works with member community to define a scope of work for data collection.

SNHPC staff collect field data according to SADES protocol.

Data collected in GIS is formatted for use by member community (I.E. for planning, maintenance)

SNHPC and Member community review results and determine if job is complete or if additional scope of work is desired.



Questions?

Contact **James Vayo**
Project Manager, SNHPC



WORK EMAIL
JVAYO@SNHPC.ORG



CELL PHONE
(603) 669-4664