



NEW
HAMPSHIRE
CHILDREN'S
HEALTH
FOUNDATION

Southern New Hampshire Planning Commission

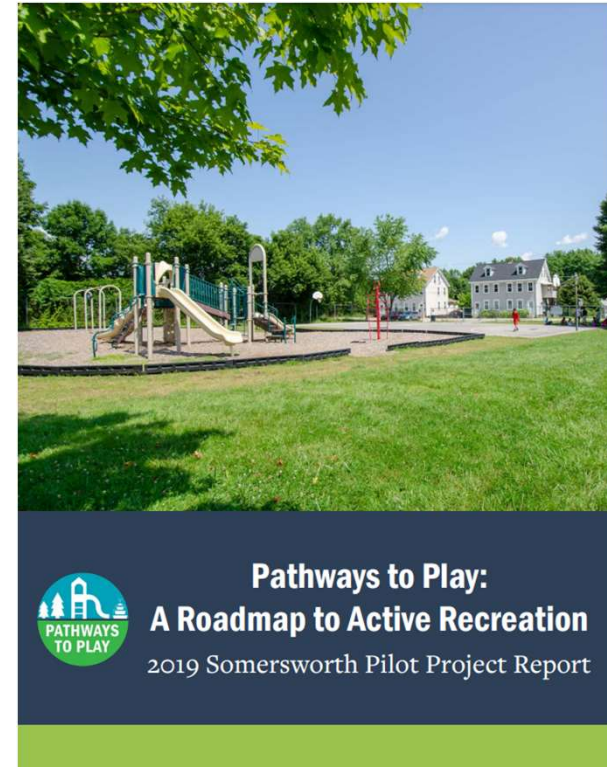


Pathways TO PLAY

*Southern New Hampshire Planning Commission
August 23, 2022*

Overview

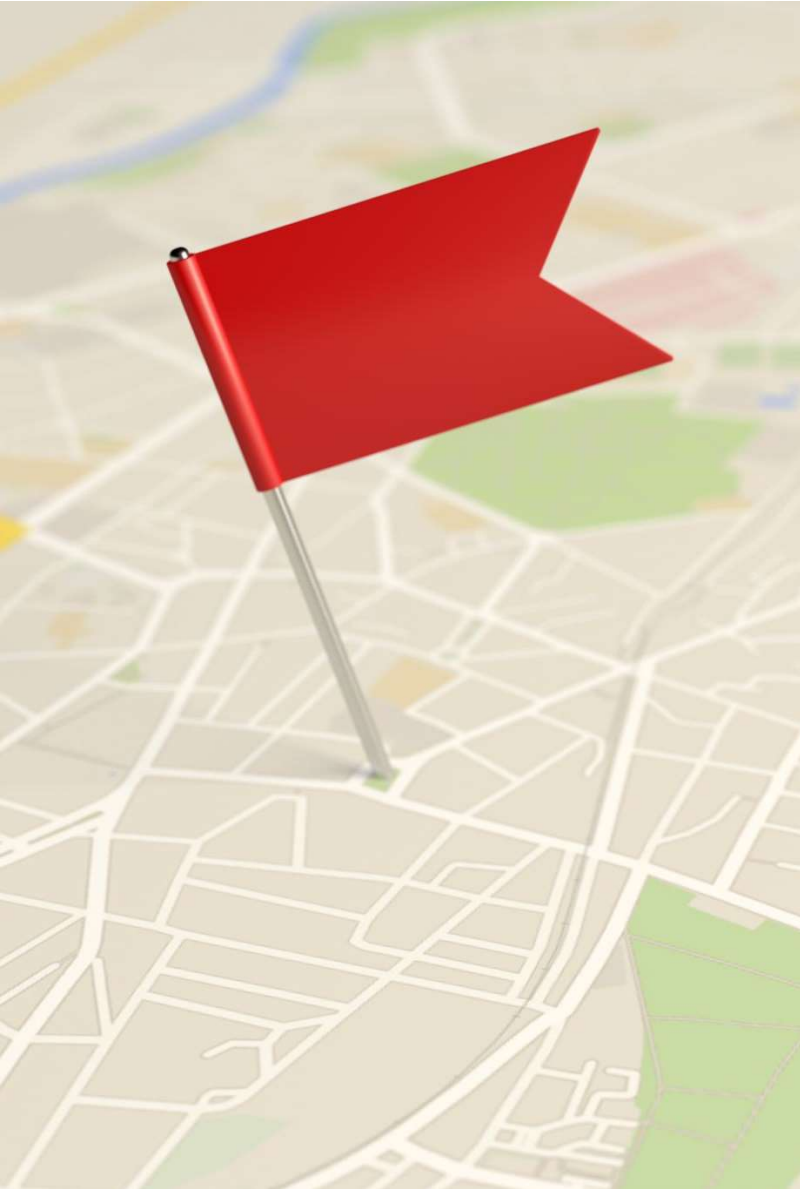
- **Funded by the NH Children's Health Foundation**
- **Inspired by the success of the Strafford Regional Planning Commission's Pathways to Play Project**





NHCHF Grant Priorities

- Prevent childhood obesity in children up to age 5
- Build support for state & local policies & practices to prevent childhood obesity



Project Outcomes

- **Communities will have improved data and maps they can use to promote recreation opportunities across the region.**
- **Increase base knowledge and awareness in the region about local and regional recreational facilities and transportation infrastructure gaps.**
- **Municipalities and transit organizations will better understand barriers to accessing recreational opportunities.**

Project Overview



**1 regional recreation
asset GIS layer**



**14 maps for each SNHPC
community**



Resident survey



**Community Pilot
Program**

Project Overview



**1 regional recreation
asset GIS layer**



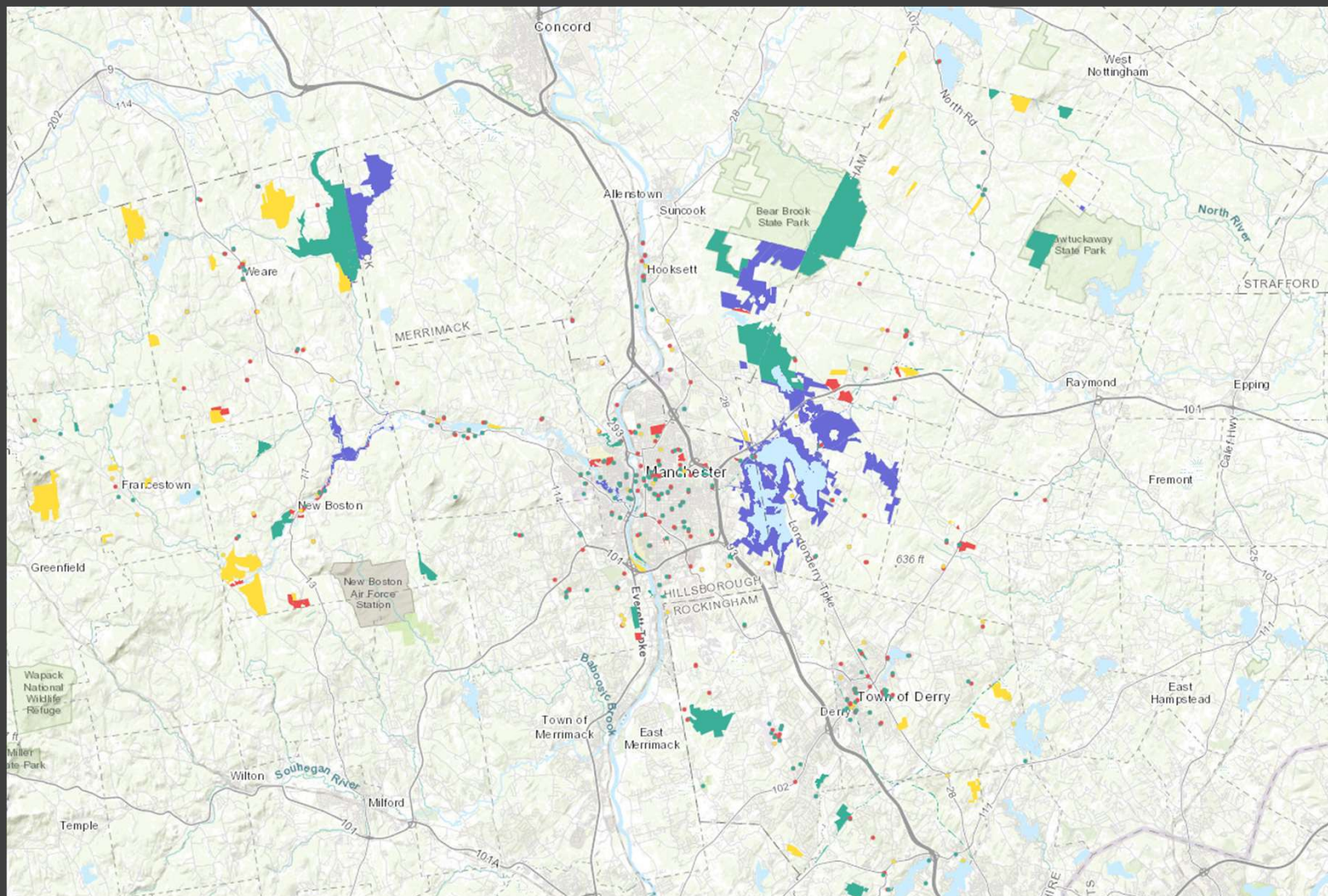
**14 maps for each SNHPC
community**



Resident survey



**Community Pilot
Program**



Legend



NHOPD/OEP- Recreation Inventory- Points

Include

- Not Reviewed
- Additional Review
- Discard
- Include

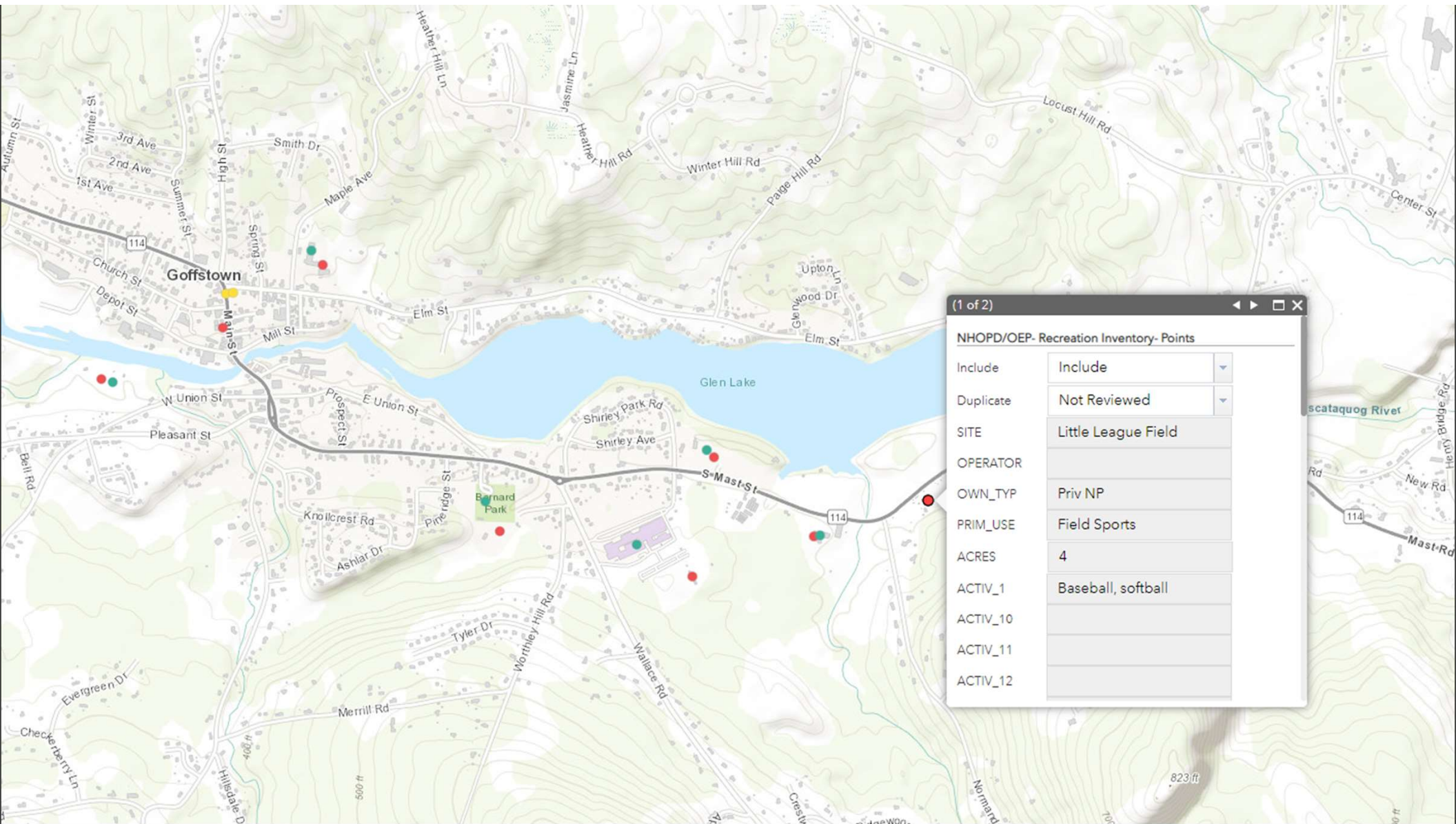
NHDES- Key Destinations- Points

Include

- Not Reviewed
- Additional Review
- Discard
- Include

NHOPD/OEP- Recreation Inventory- Polygons

- Not Reviewed
- Additional Review
- Discard
- Include



(1 of 2)

NHOPD/OEP- Recreation Inventory- Points	
Include	Include
Duplicate	Not Reviewed
SITE	Little League Field
OPERATOR	
OWN_TYP	Priv NP
PRIM_USE	Field Sports
ACRES	4
ACTIV_1	Baseball, softball
ACTIV_10	
ACTIV_11	
ACTIV_12	

Resident Survey

Purpose

To develop and conduct resident surveys to better understand if residents know about:

- The existing parks, recreation programs, and services in their communities and region,
- To identify accessibility concerns in accessing facilities and programs,
- To identify transit knowledge and needs, and
- To better understand the recreational facility and program needs of residents and caretakers of children in the target age group.



Resident Survey Results Update

- Open May 2022 through October 2022
- 214 total responses so far
- 89% of respondents are either parents or grandparents, 5% are teachers
- Majority of responses so far are from New Boston and Chester

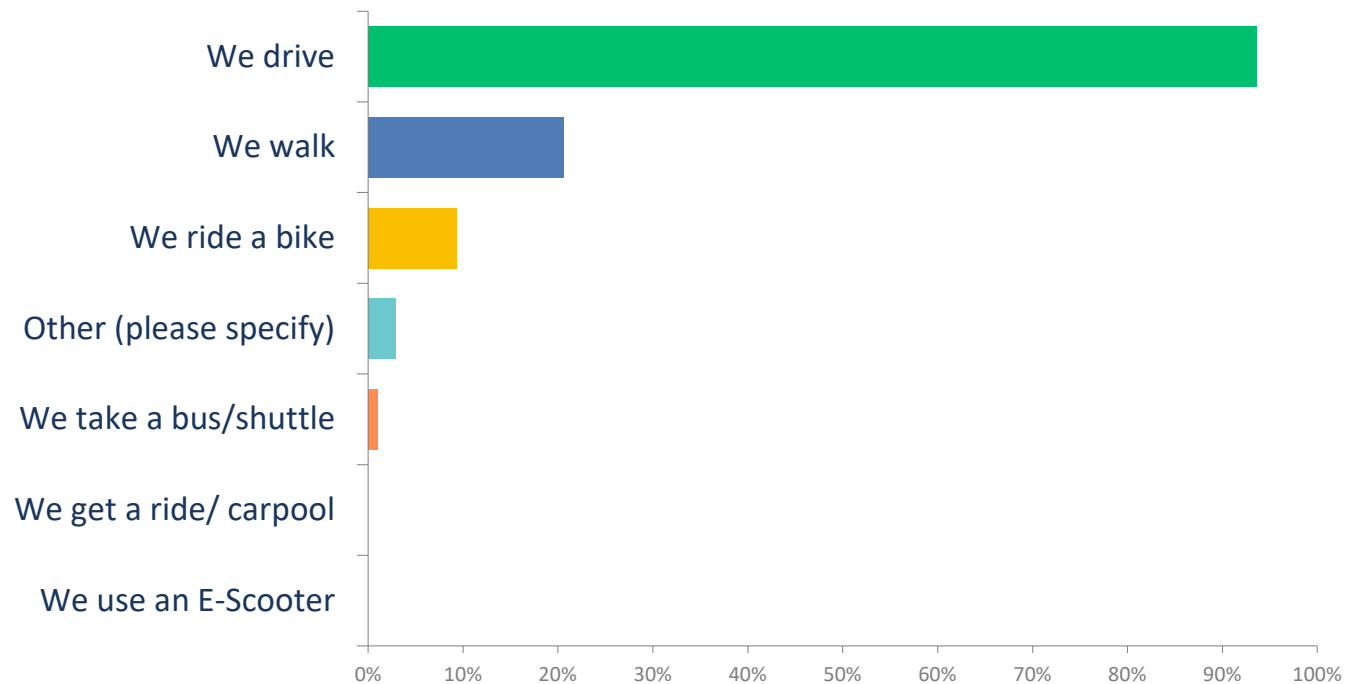


Resident Survey Results Update

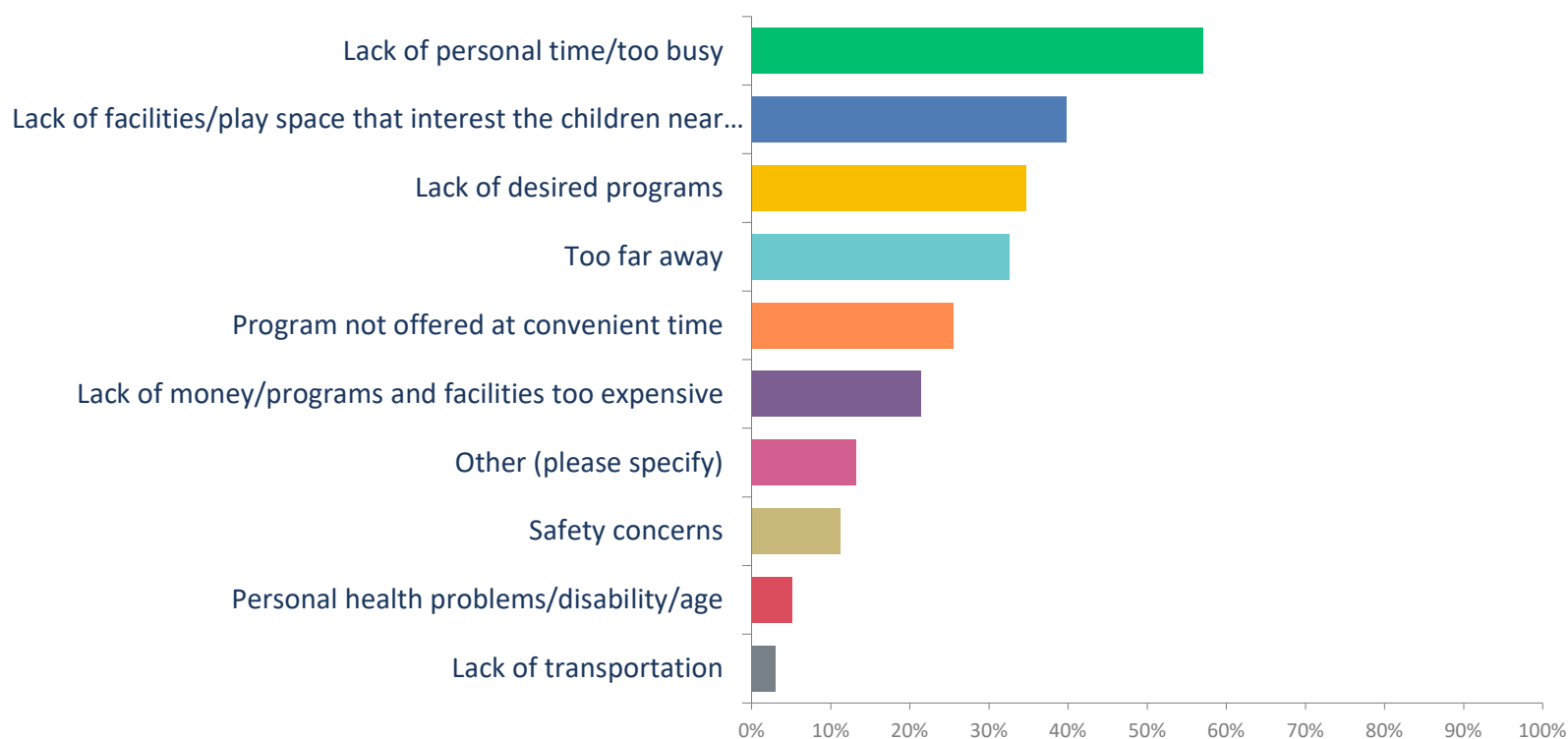
Q3 What recreational facilities (parks, nature areas, gyms, playgrounds, trails) do the young children (age 5 or under) in your life enjoy in your community, if any?

ball fields elementary school Livingston Park Play ground beach parks Derry
nature areas well Chester Academy None area Roy nature skate lake N
walking trails soccer Playground rail trail center fields
Wason Rail Trail behind town hall park playground behind town
playground Chester trails YMCA Wason Pond
bike town pool school playground Chase Park library walking
pond gym baseball fields Many splash pad swimming New Boston
Bolton Park Don Ball Park Joppa hill school Park Hood Park local hiking trails

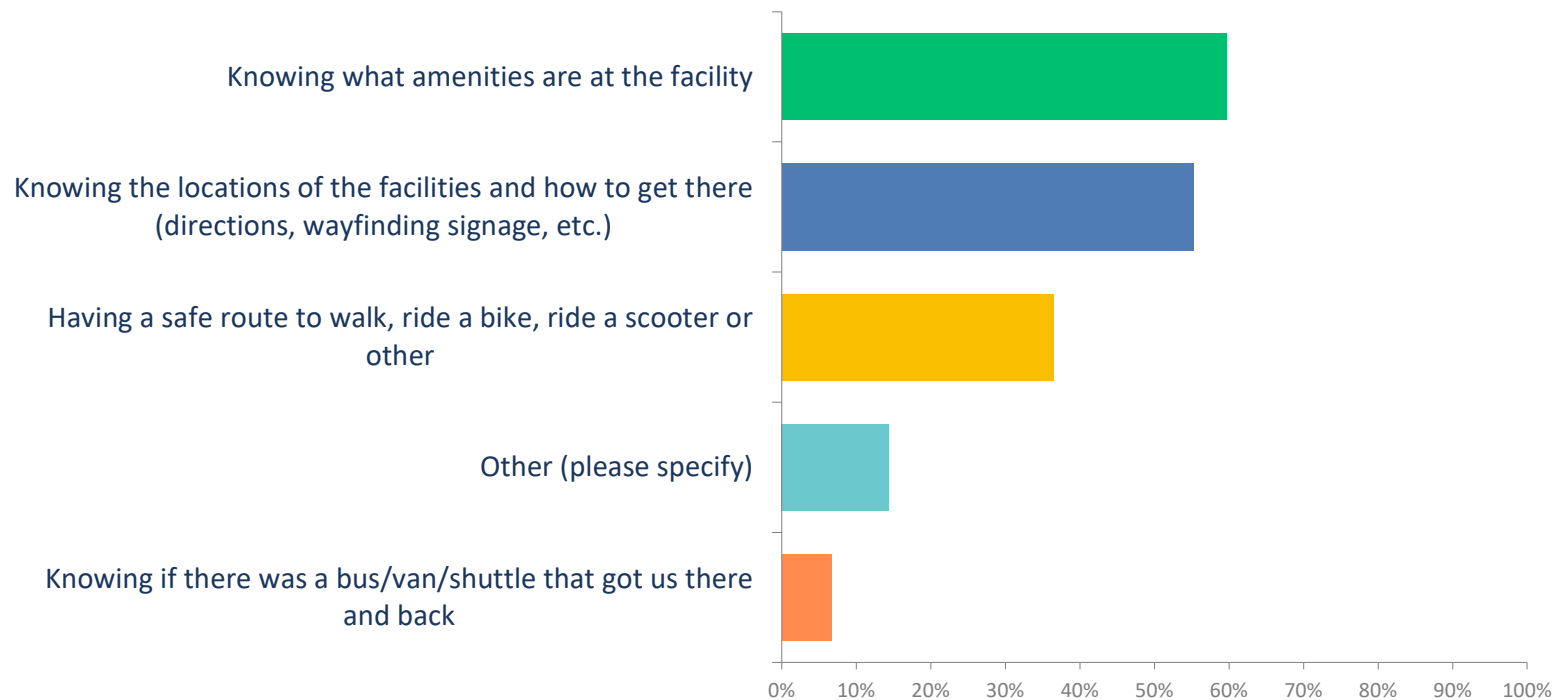
Q4: How do you typically access those facilities?



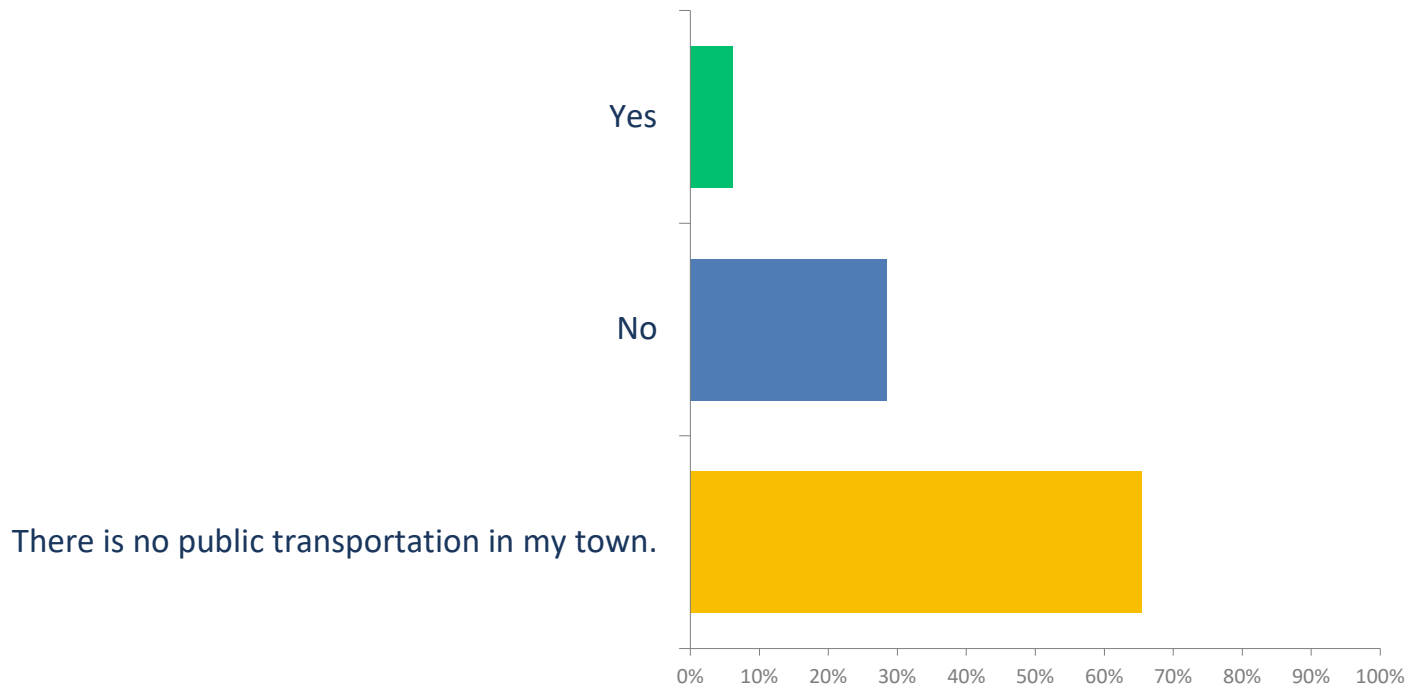
Q8: If you answered "No" to the above question, why are you and members of your household not able to participate in active recreation pursuits as often as you would like? Check all that apply.



Q9: Whether for the first time or just more frequently, what might help you to visit recreational facilities in your neighborhood or community?

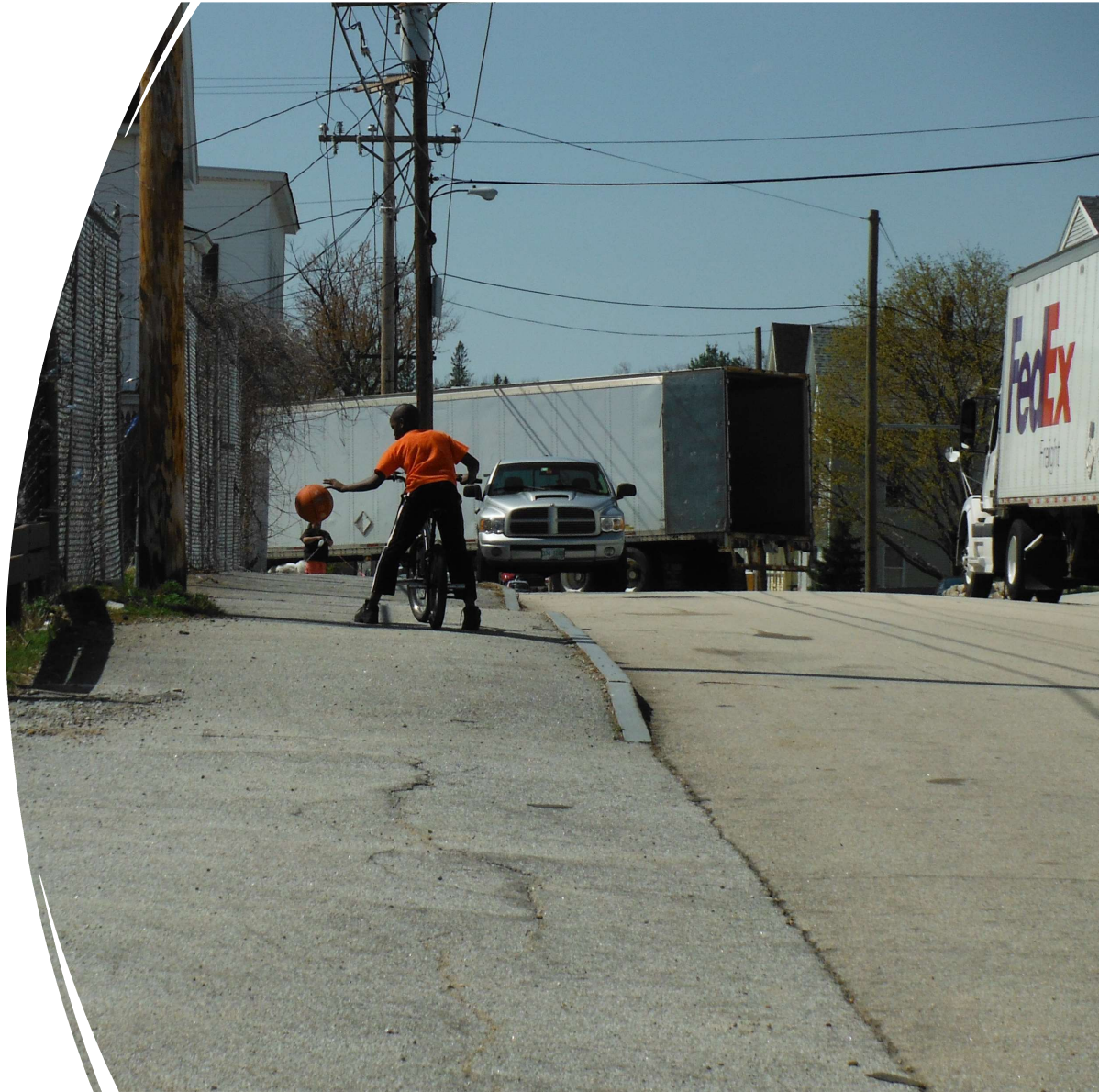


Q12: Are you familiar with public transportation options that would take you to recreational facilities in your neighborhood /in town?



Next Steps

- Survey Analysis and Survey Report
- Work with municipalities to review the GIS layer and develop maps for each community
- Work with the PTP Stakeholder Group to develop the Pilot Project Application and solicit projects from communities.



Southern New Hampshire Planning Commission



Pathways
TO PLAY

Cameron Prolman
Regional Planner
cprolman@snhpc.org
603-669-4664

Tammy Zamoyski
Regional Planner
tzamoyski@snhpc.org
603-669-4664