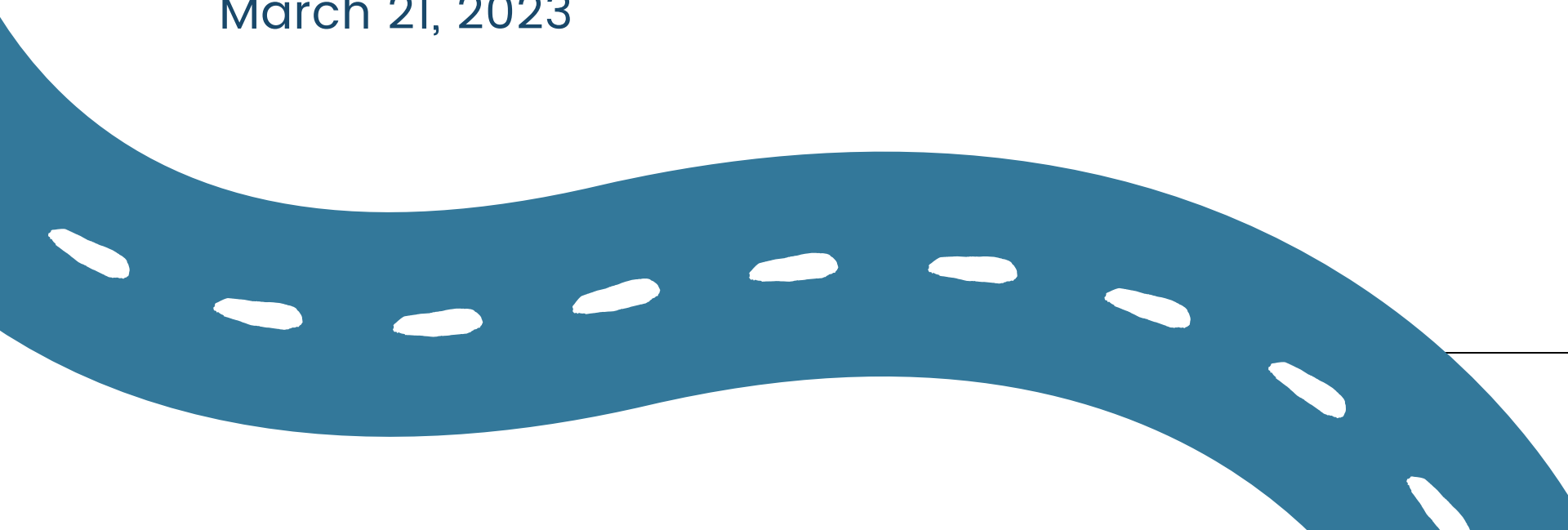
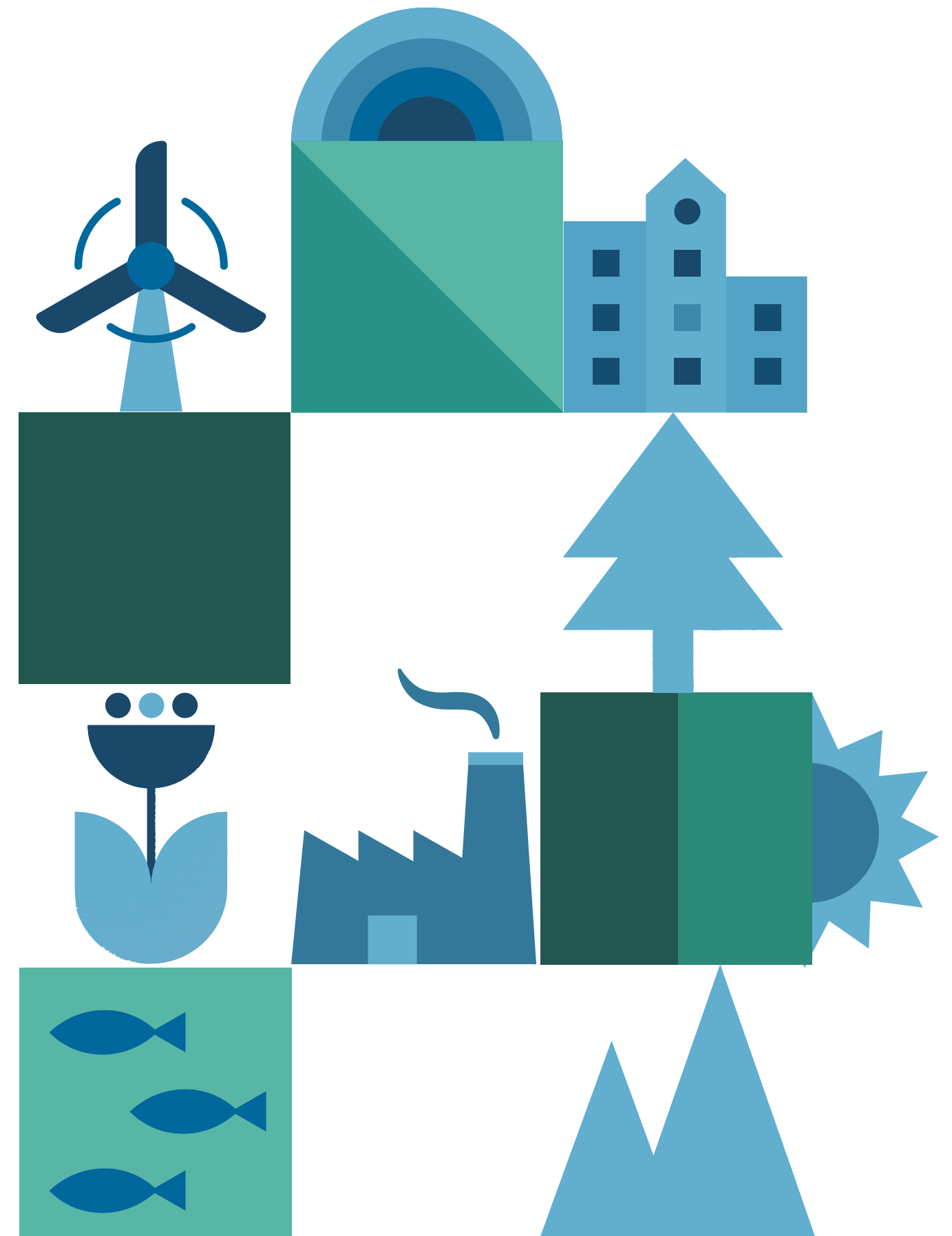


SOUTHERN NEW HAMPSHIRE  
REGIONAL PLANNING COMMISSION

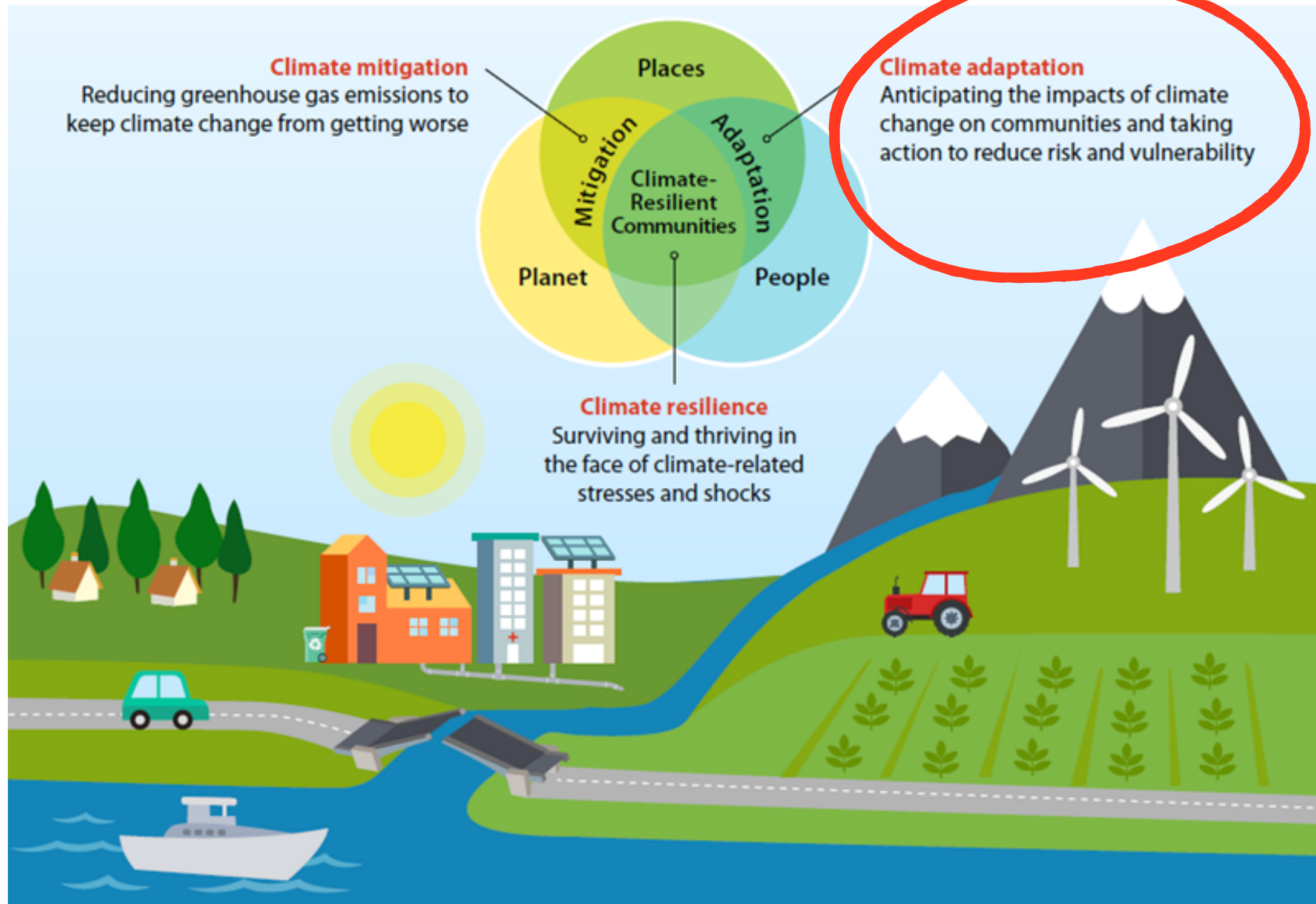
# REGIONAL CLIMATE PLANNING UPDATE

Roadway Adaptation Toolkit  
& April 11 Workshop

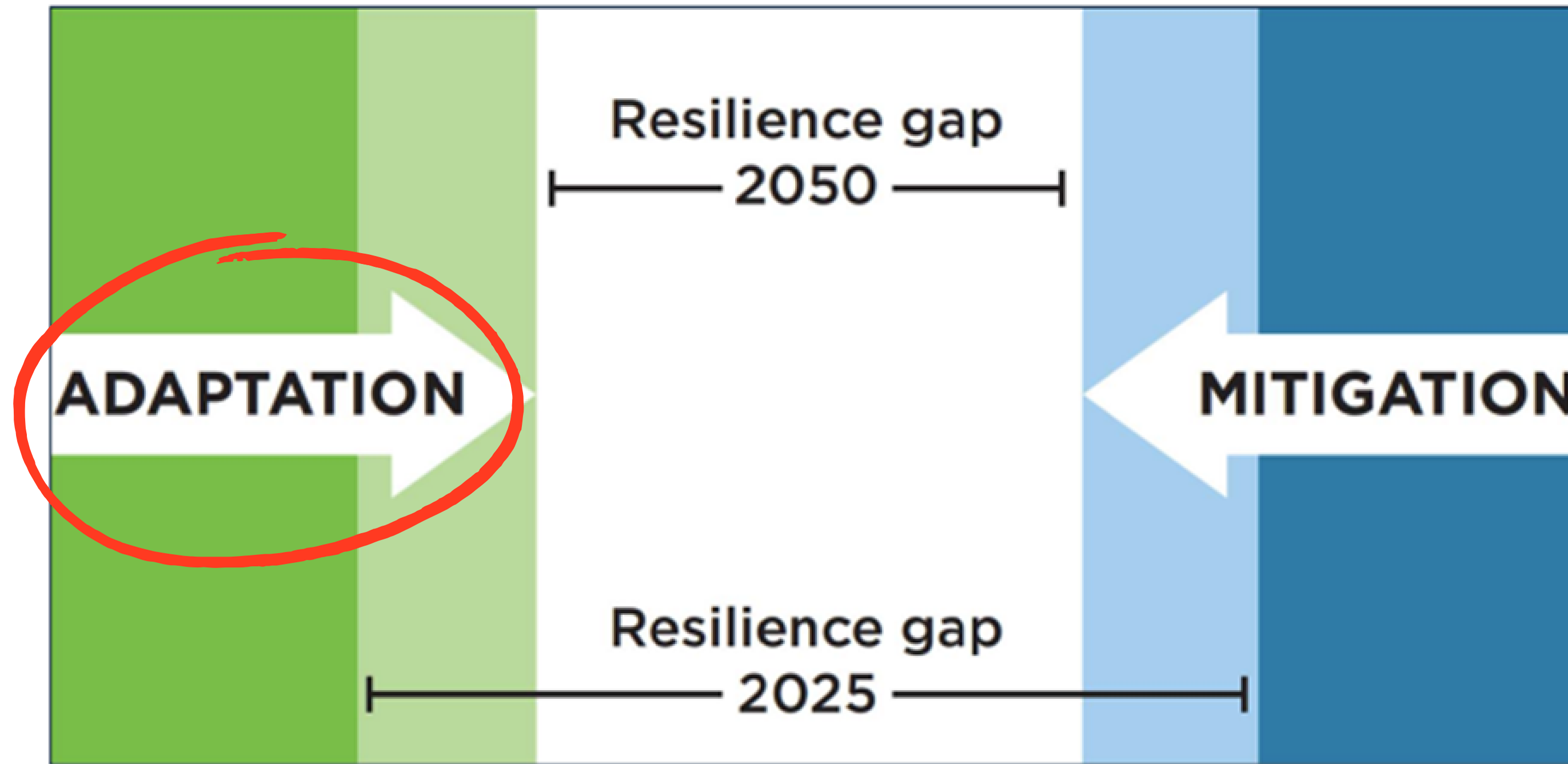
March 21, 2023



# Mitigation + Adaptation + Resilience



# Mitigation + Adaptation + Resilience



*Union of Concerned Scientists, Resilience Gap Framework Illustration, 2016*

# Regional climate concerns

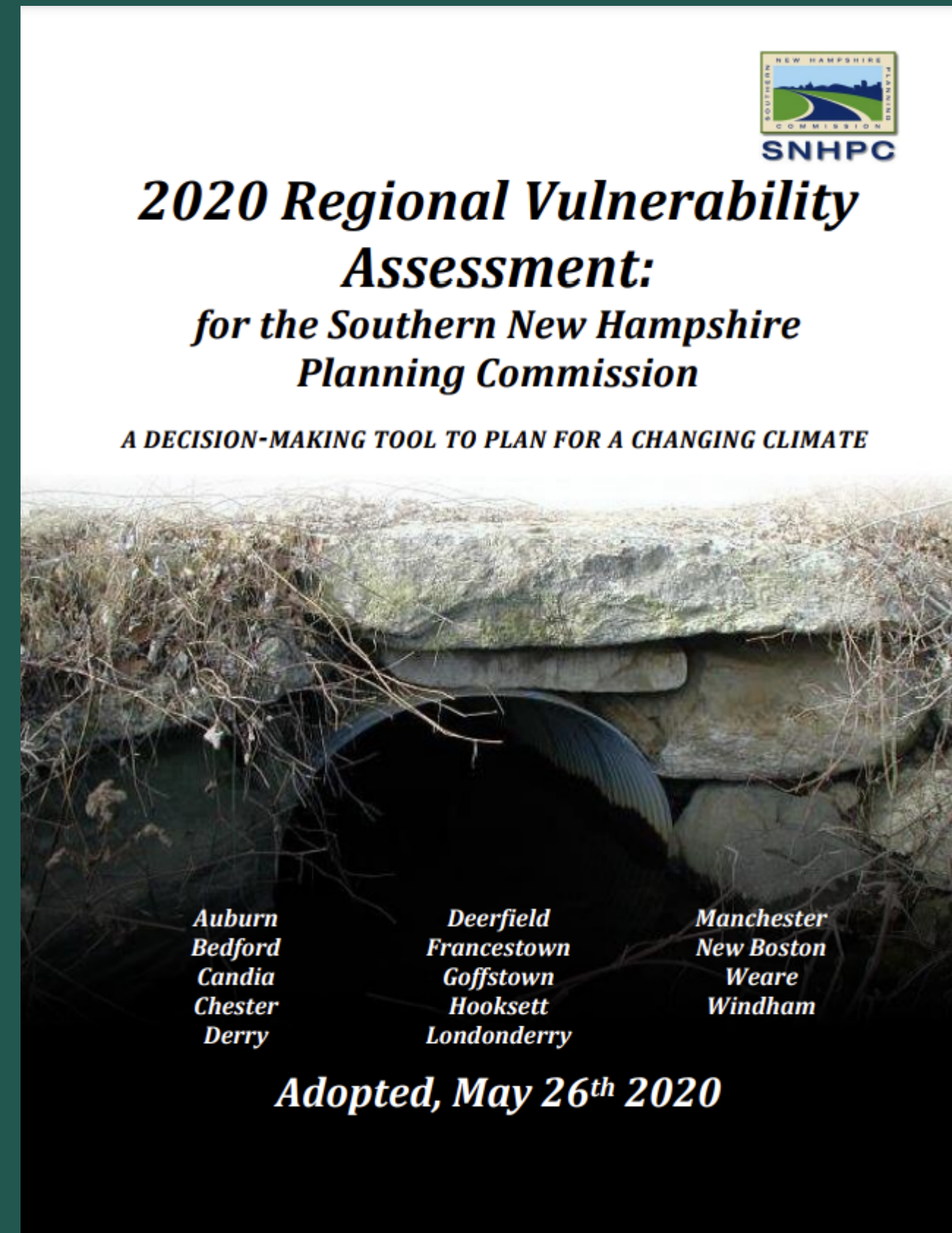
- Greater frequency of heavy rainfall events
- Higher risk of flooding
- Infrastructure vulnerability





# 2020 Regional Vulnerability Assessment

- Region-wide assessment of culverts and small bridges
- Framework to evaluate the risks associated with extreme precipitation events
- Online GIS map inventories vulnerable stream crossings
- Lays the groundwork for regional climate action!



# Our Current Scope:



1. Expand technical analysis – Mapping vulnerabilities for all Federal aid roadways



2. Provide practical implementation guidance – Roadway adaptation toolkit



3. Advance regional climate collaboration – Annual climate workshops

# Input from Climate Champions

Mtg 1. Review early content & advise on workshop prep



Feb / Mar

Mtg 2. Attend Regional Climate Workshop



April 11

Mtg 3. Review draft roadway adaptation toolkit



May / Jun

And beyond...!



# Opportunity #1: April 11 Climate Workshop in Derry



Check your inbox & register via [Eventbrite link!](#)





# Anticipated participation

Current outreach list:

- Town Planners
- Public Works
- Town Administrators/ Managers
- TAC & MPO
- Contacts from 2020 vulnerability assessment (e.g. Road, Police, Fire)
- Statewide agencies and orgs: DES, DOT, Plan-link listserve, NH Association of Conservation Commissions, New Hampshire Network

# DRAFT menu of roadway adaptation strategies

Drawing from ongoing resource scan:

- FHWA
- EPA
- NH DOT
- NH DES
- NH Homeland Security
- Regional publications, including vulnerability assessments
- UNH Sustainability Institute
- Adaptation Clearinghouse
- American Planning Association
- RAINE database (Resilience and Adaptation in New England)
- Union of Concerned Scientists
- Municipal Climate Action Plans

# DRAFT menu of roadway adaptation strategies

Five broad approaches:

1. Design & Engineering
2. Environmental
3. Operations & Maintenance
4. Outreach & Collaboration
5. Data Analysis, Policy, & Planning

Three scales of intervention:

- A. Site
- B. Corridor
- C. Systems

# Opportunity #2: Case study development



SNHPC will conduct a detailed corridor analysis  
& facilitate a work session with key Town staff



SOUTHERN NEW HAMPSHIRE  
REGIONAL PLANNING COMMISSION

# THANK YOU!

Contact

Suzanne Nienaber

[snienaber@snhpc.org](mailto:snienaber@snhpc.org)

603-669-4664

