

# **SNHPC Title VI and Environmental Justice Program Update**

SNHPC MPO Meeting  
August 25, 2020

Nathan Miller, AICP  
Deputy Executive Director





# SNHPC Title VI Program Update

- The NHDOT advises that MPO Title VI Programs should be updated every three years.
  - The SNHPC's last Title VI Program update occurred in December 2017.
- The SNHPC received recommendations from a recent review of the Title VI Program.
  - The review was conducted in April 2020 by RLS & Associates, Inc. (on behalf of the NHDOT Bureau of Rail and Transit).



# SNHPC Title VI Program Update

- The Draft SNHPC Title VI and Environmental Justice Program was released for public comment on August 17, 2020, and the 30-day comment period will end on September 17, 2020.
  - Comments on the draft Title VI Program are welcome any time during the comment period and may be submitted to the SNHPC by regular mail or e-mailed to Nate Miller ([nmiller@snhpc.org](mailto:nmiller@snhpc.org)).
- The SNHPC MPO will hold a public hearing to consider adoption of The Draft SNHPC Title VI Program at the September 22, 2020 meeting.

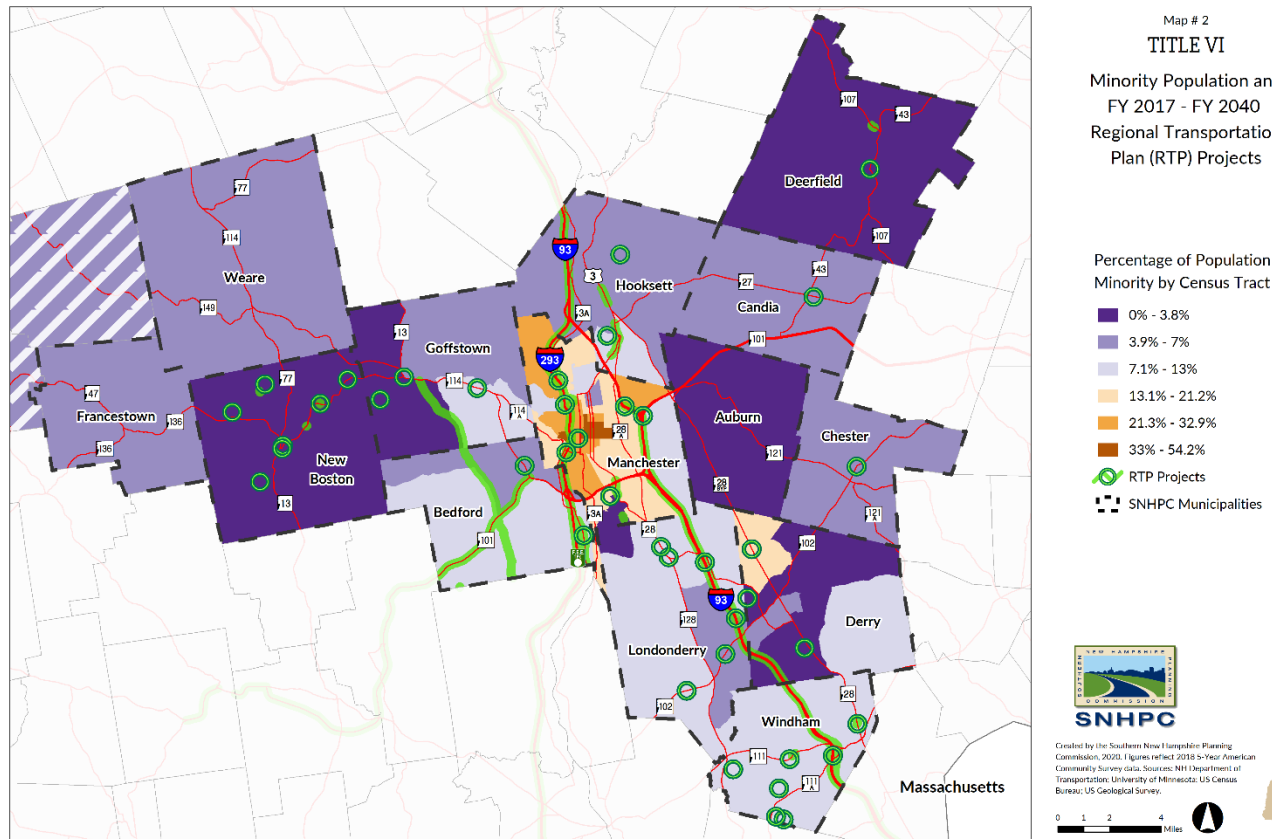


# SNHPC Title VI Program Update

- Recommendations from the review by RLS & Associates, Inc. (on behalf of the NHDOT Bureau of Rail and Transit):
  - Remove references to age and disability from the Title VI Policy Statement (as these are protected under statutes other than Title VI).
  - Add instructions for how to file a complaint directly with the FTA Office of Civil Rights.
  - Update the demographic profile with the most recent American Community Survey data.
  - Update the list of sub-recipients in Section 3.10 and 3.11 of the Title VI Program.
  - Update the membership list in Appendix D of the Title VI Program.



# Updated Demographics- Minority Population

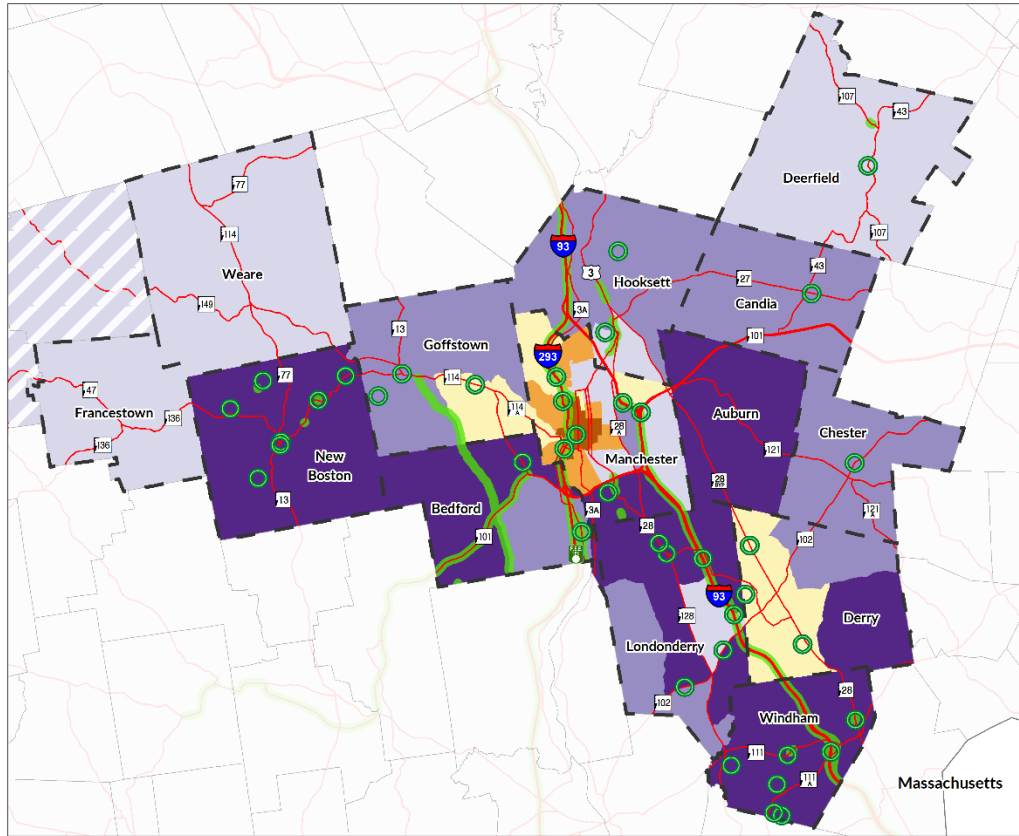


- Minority residents comprise approx. 13.0% of the population of the SNHPC region.
- This average is exceeded in one (1) census tract in the Town of Derry and twenty-five (25) census tracts in the City of Manchester.

The distribution of approved Long Range Transportation projects does not suggest that areas with larger minority populations are subject to a disproportionate share of either benefits or adverse impacts from transportation projects.



# Updated Demographics- Low Income Population



Map # 4  
TITLE VI  
Low Income Population  
and FY 2017 - FY 2040  
Regional Transportation  
Plan Projects

Percentage Living at  
or Below the Poverty  
Level by Census Tract

- 0% - 2.1%
- 2.2% - 4.6%
- 4.7% - 8.5%
- 8.6% - 14%
- 14.1% - 21.2%
- 21.3% - 44.4%

RTP Projects

SNHPC Municipalities



Created by the Southern New Hampshire Planning  
Commission, 2020. Figures reflect 2018 5-Year American  
Community Survey data. Sources: NH Department of  
Transportation; University of Minnesota; US Census  
Bureau; US Geological Survey.

0 1 2 4 Miles



- Approx. 8.5% of the population in the SNHPC region lives below the poverty line.
- This average is exceeded in three (4) census tracts in the Town of Derry, one (1) census tract in the Town of Goffstown, and twenty-one (21) census tracts in the City of Manchester.

The distribution of approved Long Range Transportation projects does not suggest that areas with larger low-income populations are subject to a disproportionate share of either benefits or adverse impacts from transportation projects.



# Updated Demographics- Limited English Proficiency (LEP) Population

- **Limited English Proficiency** is defined as, “Individuals who do not speak English as their primary language and who have a limited ability to read, speak, write, or understand English.”
- Approx. 4.2% of the population of the SNHPC region is identified as having Limited English Proficiency.
  - **1.3% of the population (approx. 3,542 people) are Spanish-speaking LEP.**
  - 1.6% of the population are LEP for “Other Indo-European Languages”
  - 0.8% of the population are LEP for “Asian and Pacific Languages”
  - 0.5% of the population are LEP for “Other Languages”



# Special Considerations for Spanish Speaking Population

- Given that the Spanish-speaking LEP population in the region exceeds 1,000 individuals, the SNHPC will develop a **Language Assistance Plan** pursuant to FTA requirements.
- The **Language Assistance Plan** will likely include considerations including, but not limited to:
  - Translating key SNHPC documents and public notices into Spanish.
  - Retaining a language/translation service to provide accommodations as needed for LEP persons in the region.



**Questions?**