

PM1: SAFETY PERFORMANCE MEASURES SNHPC 2020

Southern New Hampshire Planning Commission
Metropolitan Planning Organization
January 28, 2020

Carl Eppich — SNHPC — Principal Planner
Zachary Swick — SNHPC— GIS Analyst



Background Info –Safety Performance

Why Safety Performance measures and targets?

Federal Legislation



MAP-21- Moving Ahead for Progress in the 21st Century Act

- Passed in 2012
 - Sought to increase **the transparency and accountability** related to states' investment of federal taxpayer dollars into transportation infrastructure and services nationwide,
 - To ensure that states distribute funds to transportation projects that collectively make progress toward the achievement of **national goals**.
 - Aimed to **achieve set objectives** by assessing the performance of state transportation systems compared to national goals and enforcing minimum requirements.
-



- Requires DOTs to **measure and report performance** in the following areas:
Safety, pavement and bridge, system performance/congestion, freight movement, and congestion mitigation and air quality (CMAQ).

MAP-21- Moving Ahead for Progress in the 21st Century Act

National performance goals for Federal highway programs:

Safety—To achieve a significant reduction in traffic fatalities and serious injuries on all public roads.

Infrastructure condition—To maintain the highway infrastructure asset system in a state of good repair.

Congestion reduction—To achieve a significant reduction in congestion on the NHS.

System reliability—To improve the efficiency of the surface transportation system development.

Freight movement and economic vitality—To improve the national freight network, strengthen the ability of rural communities to access national and international trade markets, and support regional economic

Environmental sustainability—To enhance the performance of the transportation system while protecting and enhancing the natural environment.

Reduced project delivery delays—To reduce project costs, promote jobs and the economy, and expedite the movement of people and goods by accelerating project completion through eliminating delays in the project development and delivery process, including reducing regulatory burdens and improving agencies' work practices.

FAST - Fixing America's Surface Transportation Act

- Passed in 2015
- Continues MAP-21's overall performance management approach, within which States invest resources in projects that collectively will make progress toward national goals.

Tweaked...

- *Performance period adjustment* to the timeframe for States and MPOs to make progress toward meeting their performance targets under the National Highway Performance Program
 - *Clarifies the significant progress timeline* for the Highway Safety Improvement Program (HSIP) performance targets.
[FAST Act § 1406(a)(1) and (b); 23 U.S.C. 119(e)(7) and 148(i)]
 - *Five federally-required safety measures* for transportation.
-



Background Info – Federal Legislation and Safety Performance

What are the Five Federally-required safety measures?

1. **Number of Fatalities**: The total number of persons suffering fatal injuries in a motor vehicle crash during a calendar year.
 2. **Rate of Fatalities**: The ratio of the number of fatalities to the number of vehicle miles traveled (VMT, in 100 Million VMT) in a calendar year.
 3. **Number of Serious Injuries**: The total number of persons suffering at least one serious injury in a motor vehicle crash during a calendar year.
 4. **Rate of Serious Injuries**: The ratio of the number of serious injuries to the number of VMT (in 100 Million VMT) in a calendar year.
 5. **Number of Non-Motorized Fatalities and Non-motorized Serious Injuries**: The combined total number of non-motorized fatalities and non-motorized serious injuries involving a motor vehicle during a calendar year.
-



Federal Legislation and State-level Safety Performance Targets

States set safety performance targets

- MPOs including SNHPC are allowed the flexibility to set their own safety targets

OR

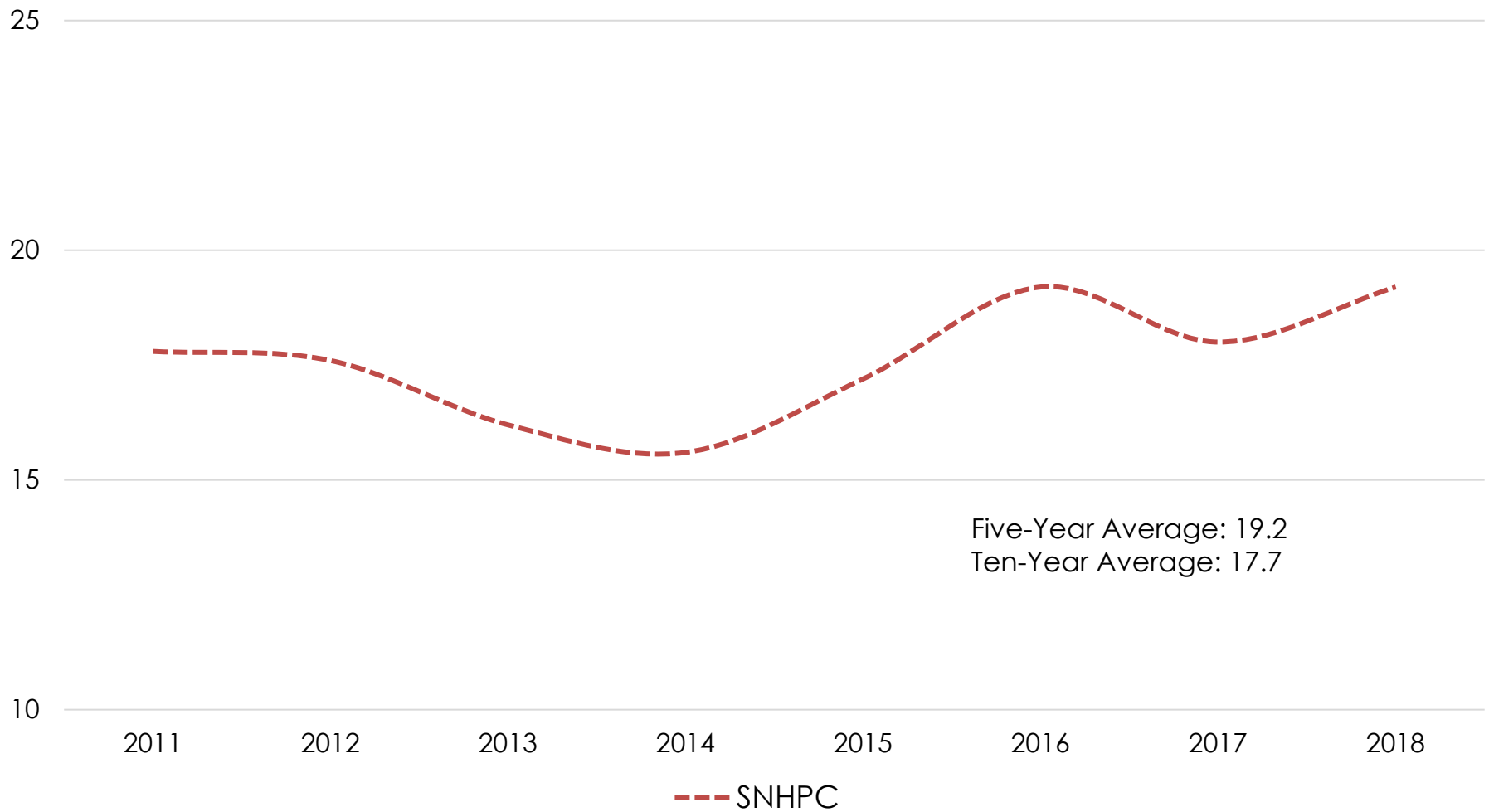
- MPOs may support the State-level performance targets

Last year, on January 22, 2019, SNHPC adopted the State of New Hampshire's Safety Performance Targets for 2019

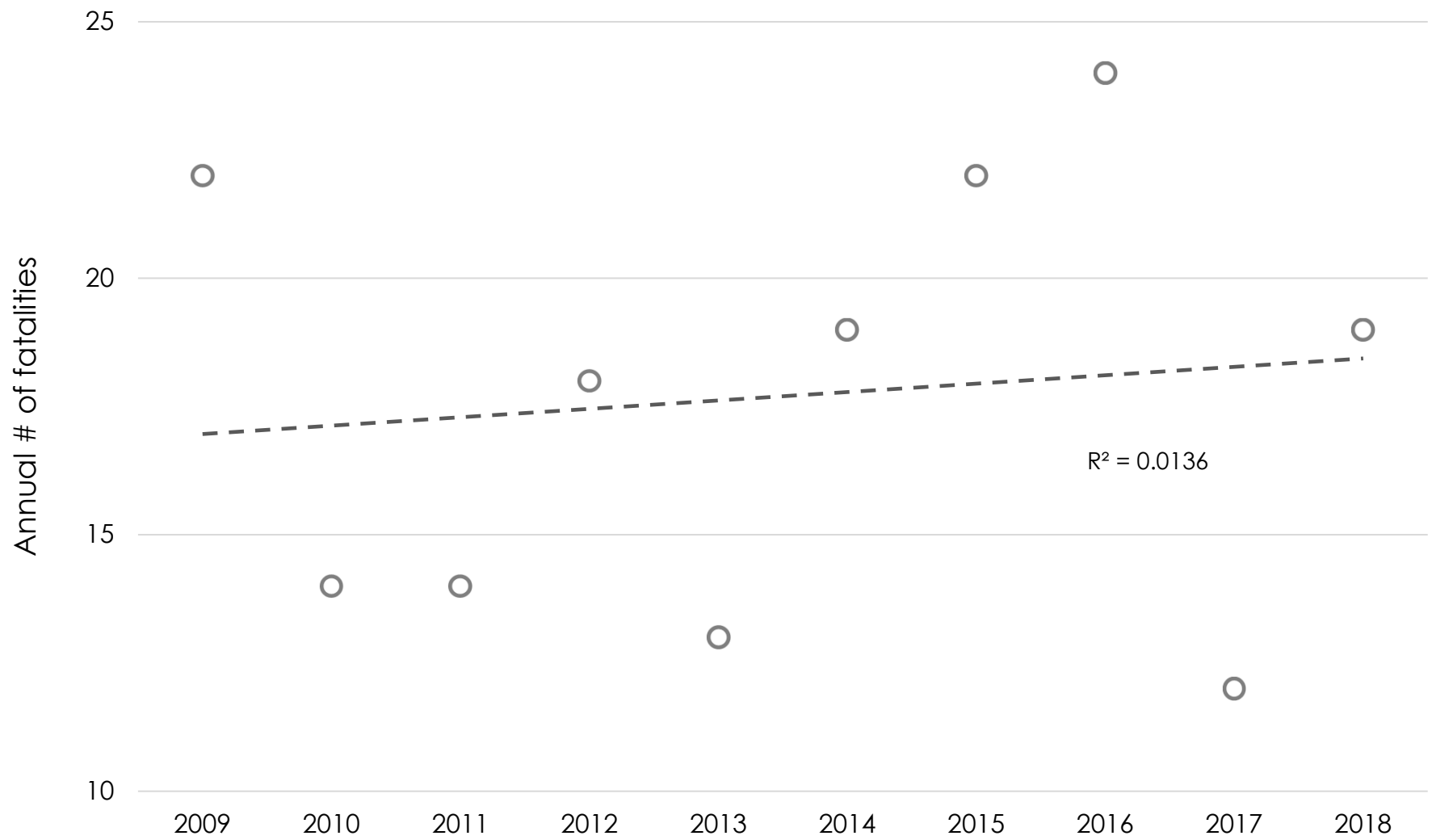
SNHPC Recommended Targets for 2020: **Support State Targets**

It is recommended that SNHPC again adopt the State Performance Targets for 2020

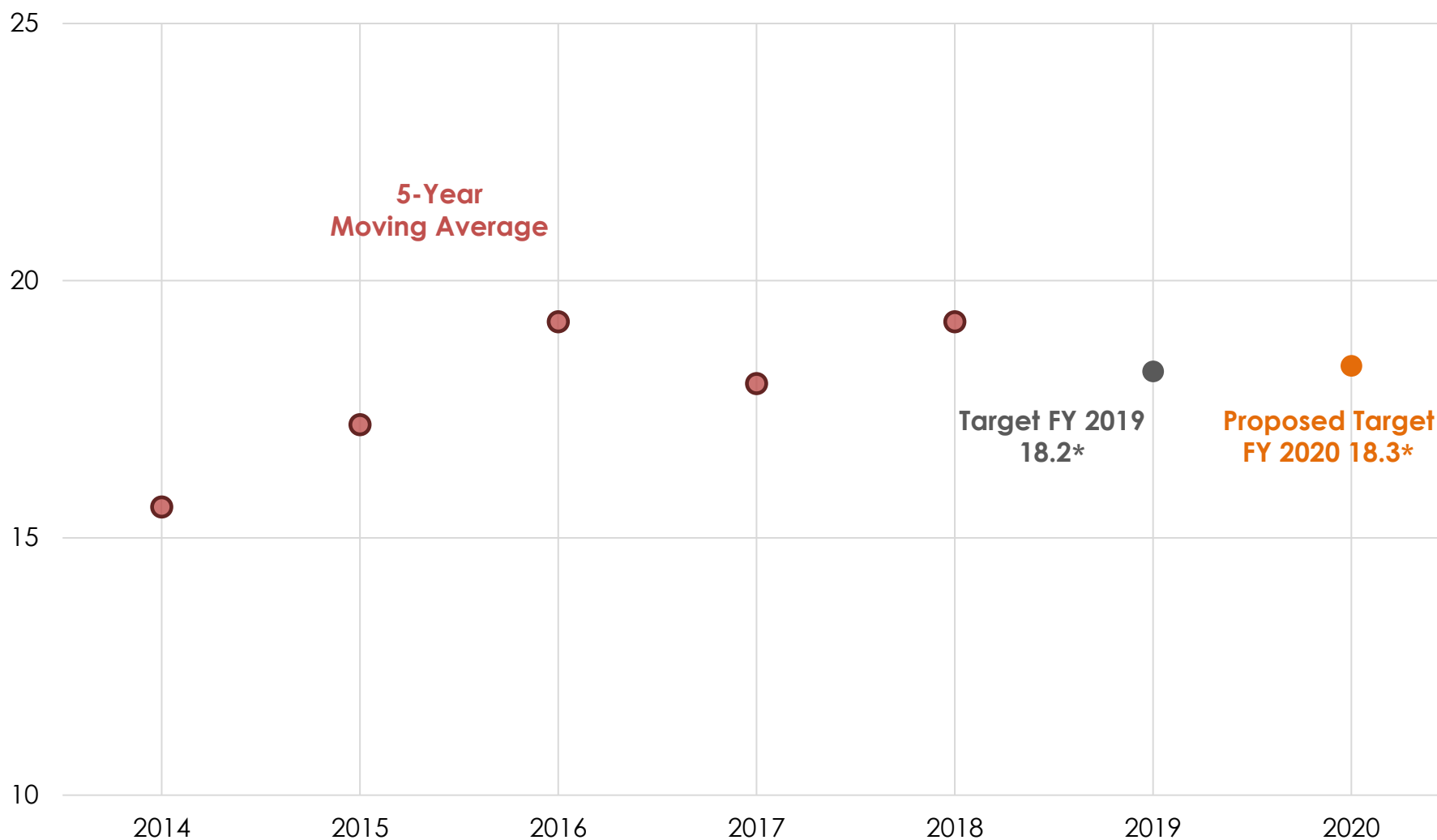
Measure 1: Number of Fatalities
(Five-Year Moving Average)



Number of SNHPC Fatalities

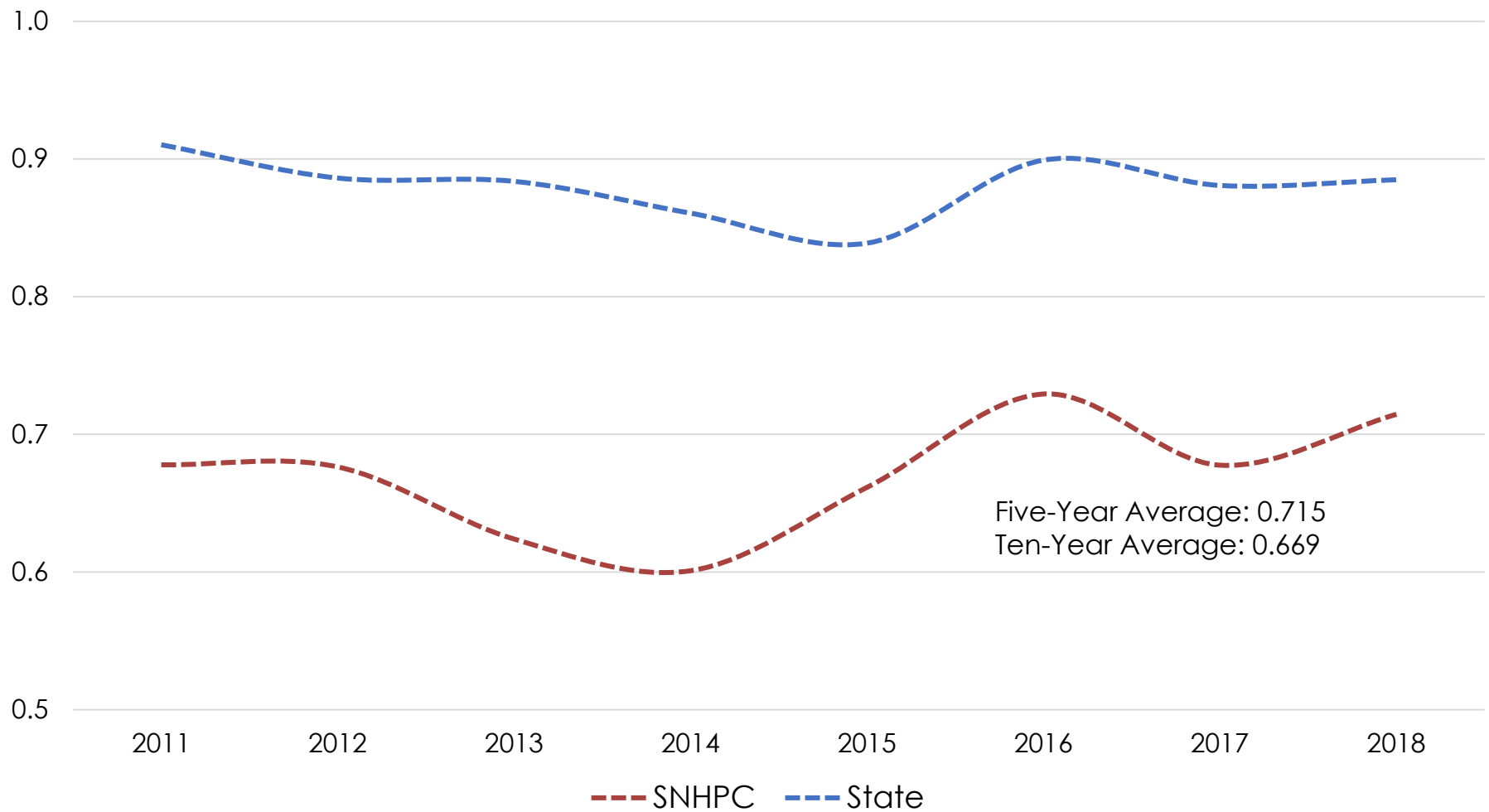


Measure 1: Proposed Target for the Number of Fatalities

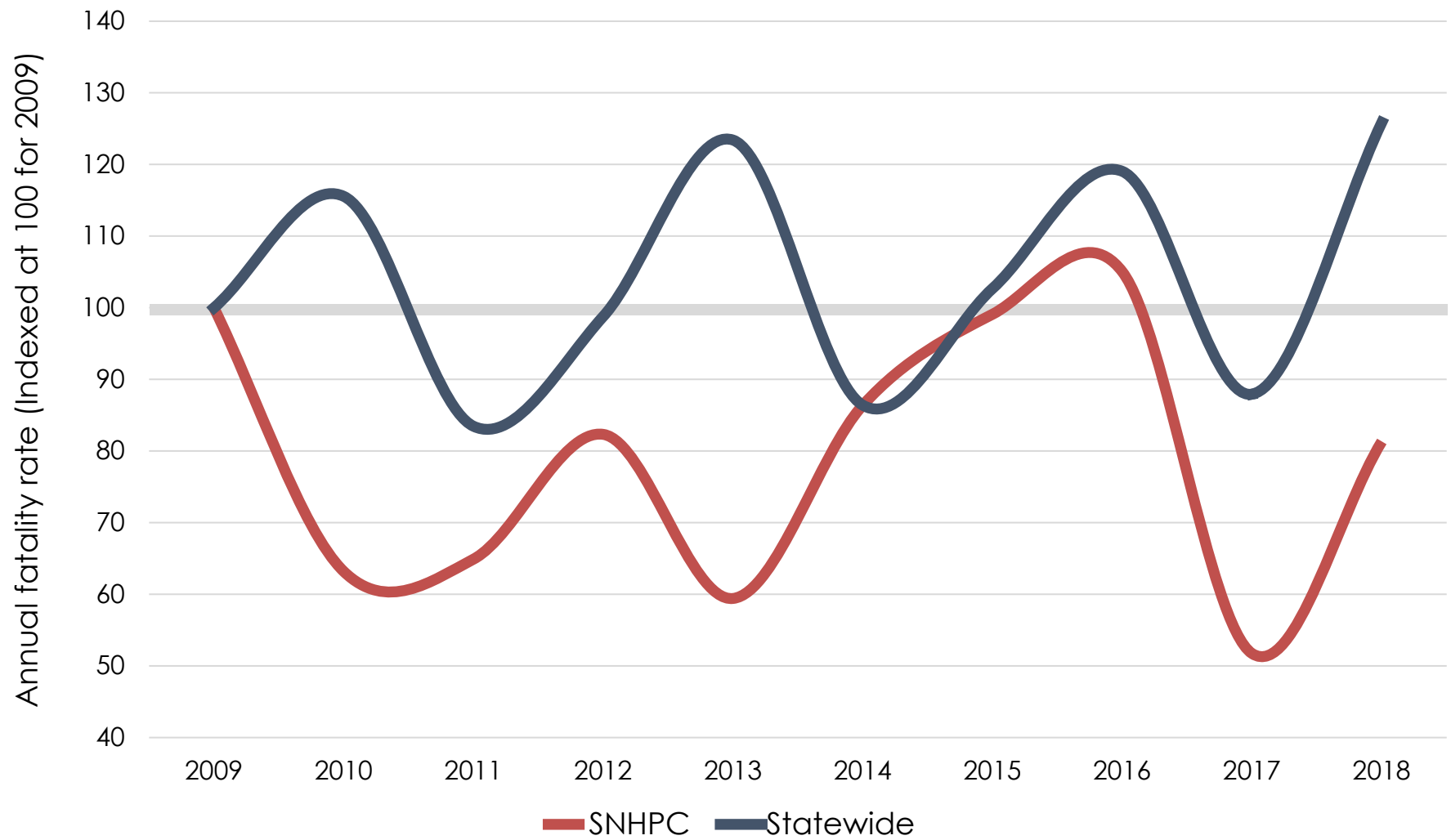


*These figures represent proportional distributions of the state's targets and are for illustrative purposes only

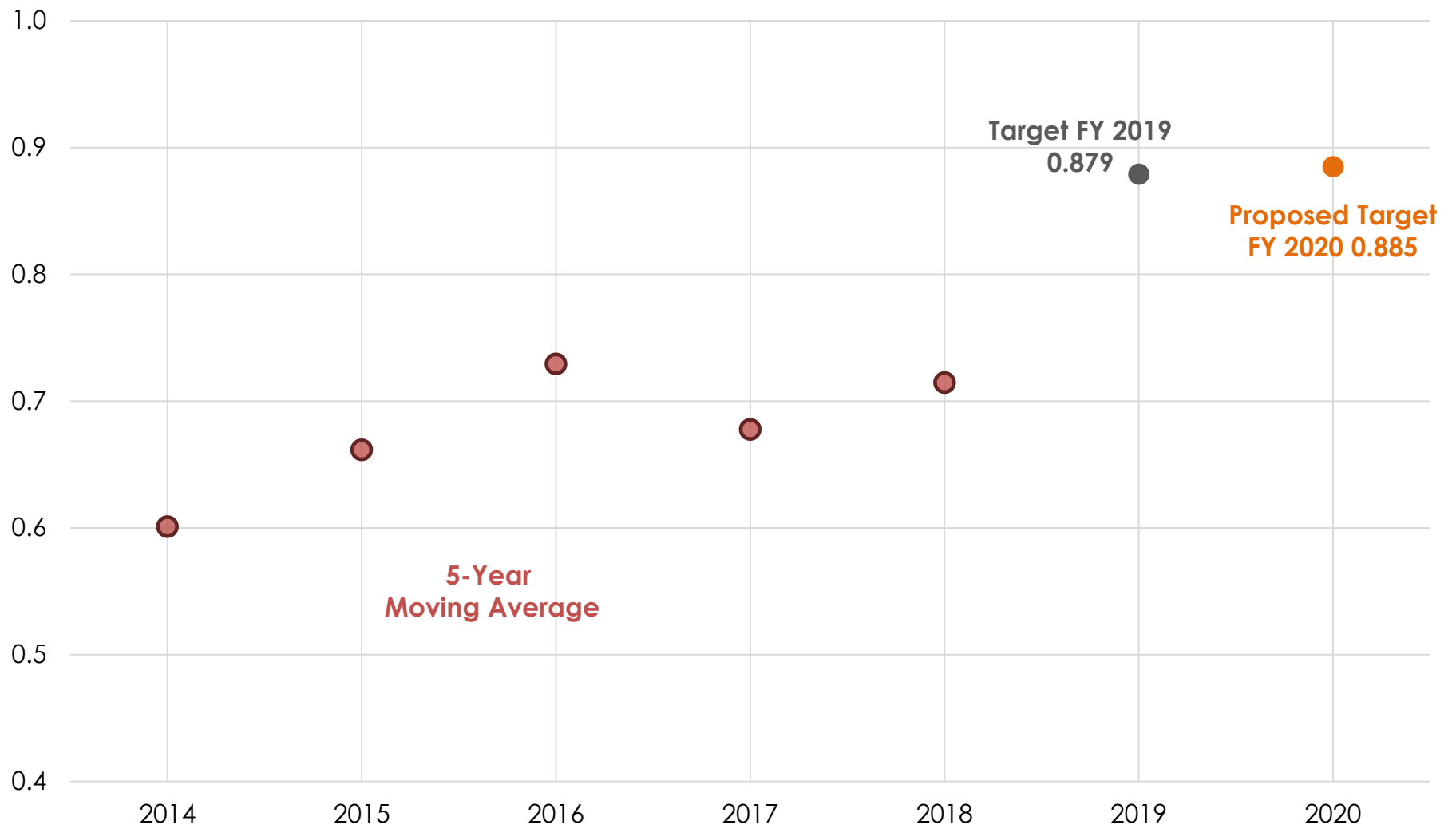
Measure 2: Fatality Rate (Five-Year Moving Average)



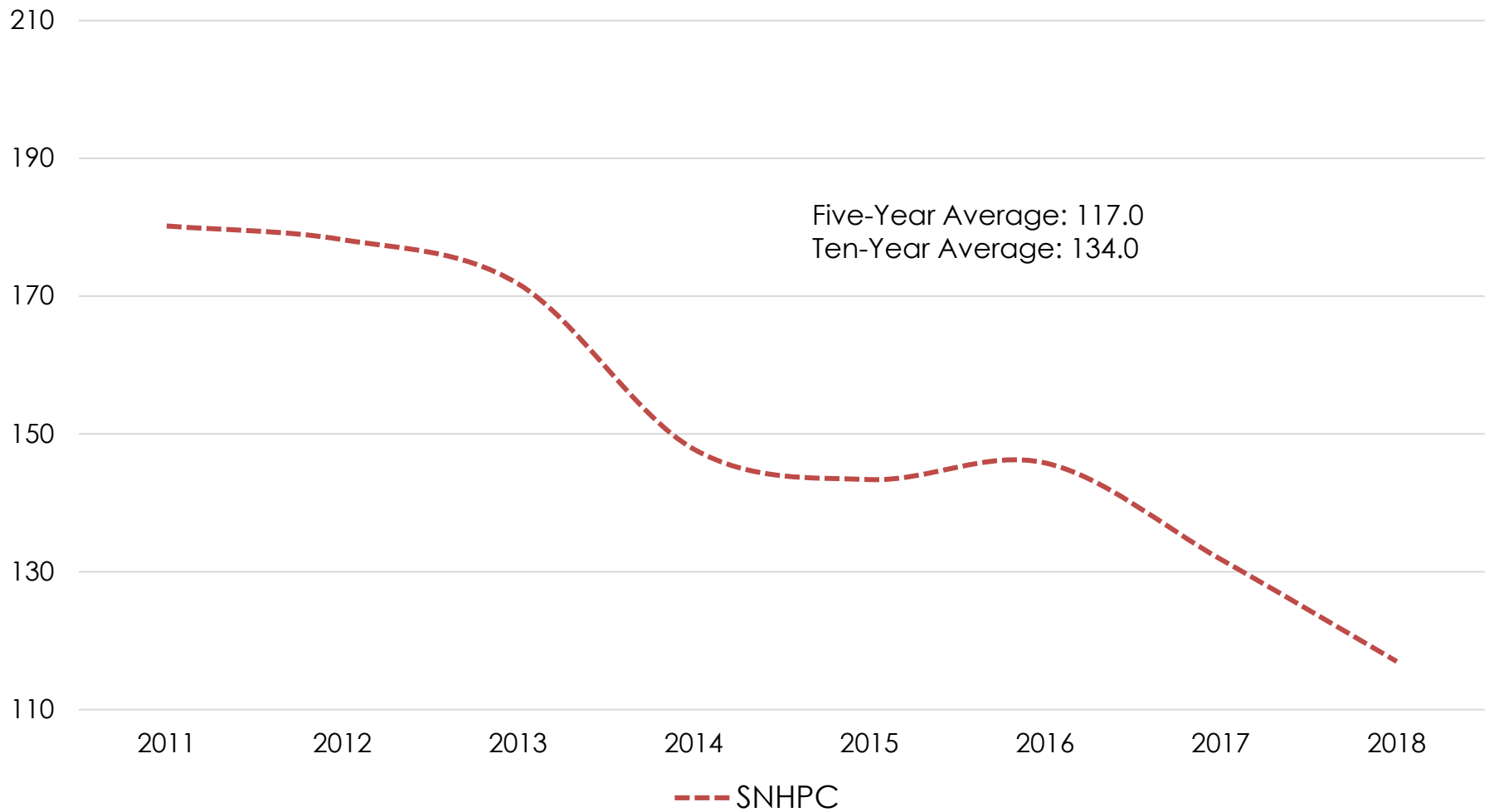
Change in the Fatality Rate



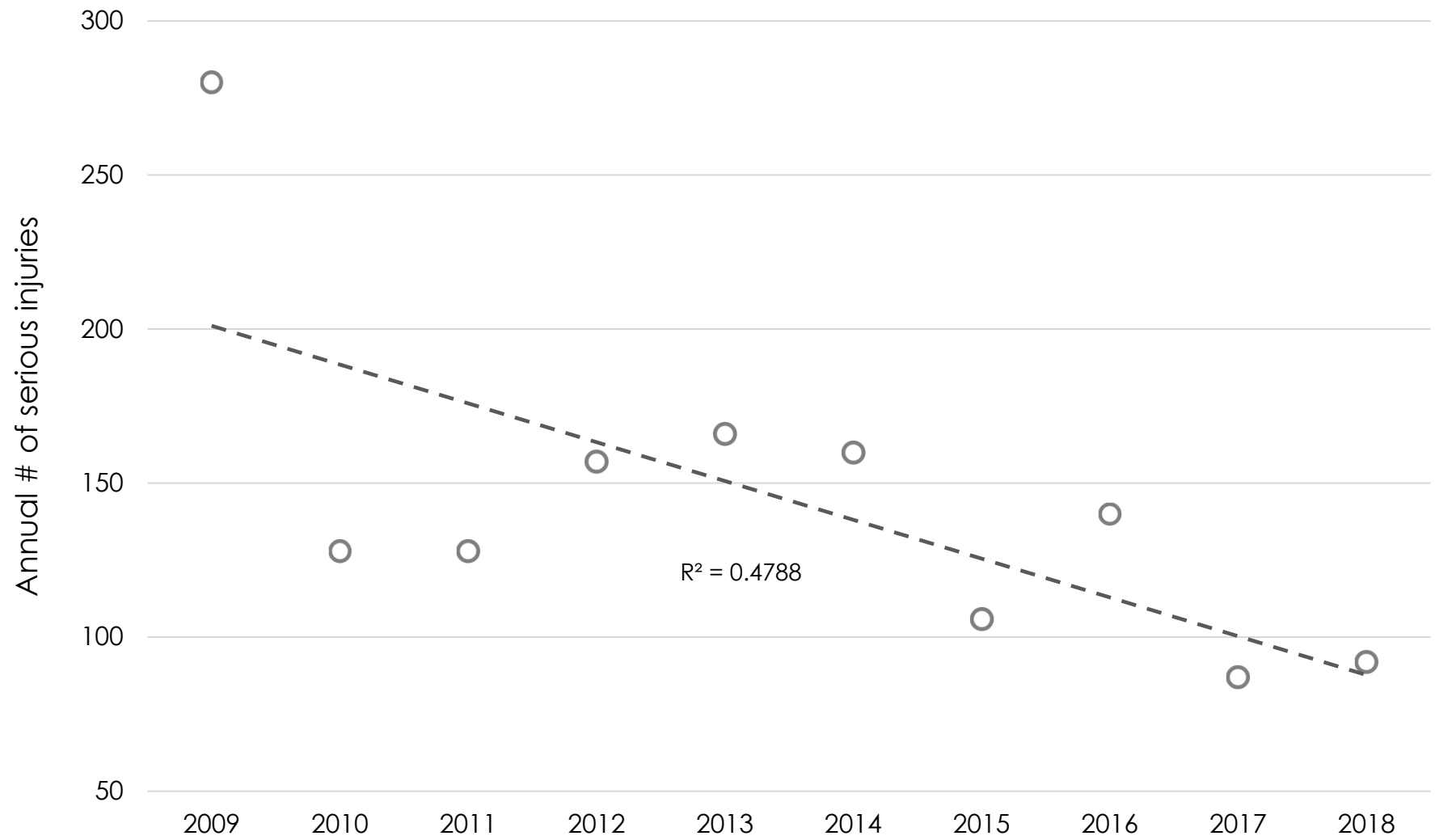
Measure 2: Proposed Target Fatality Rate



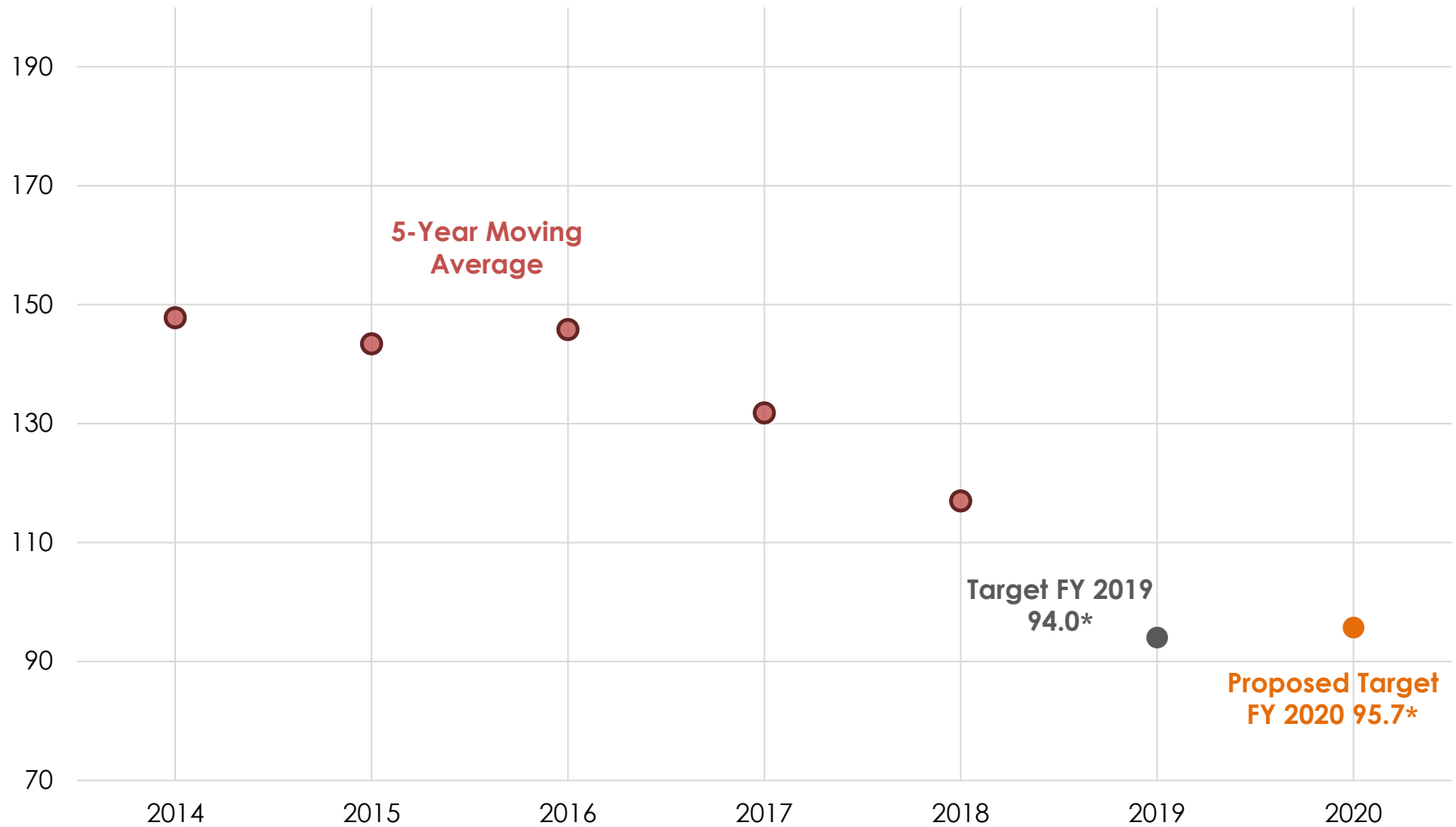
Measure 3: Number of Serious Injuries (Five-Year Moving Average)



Number of SNHPC Serious Injuries

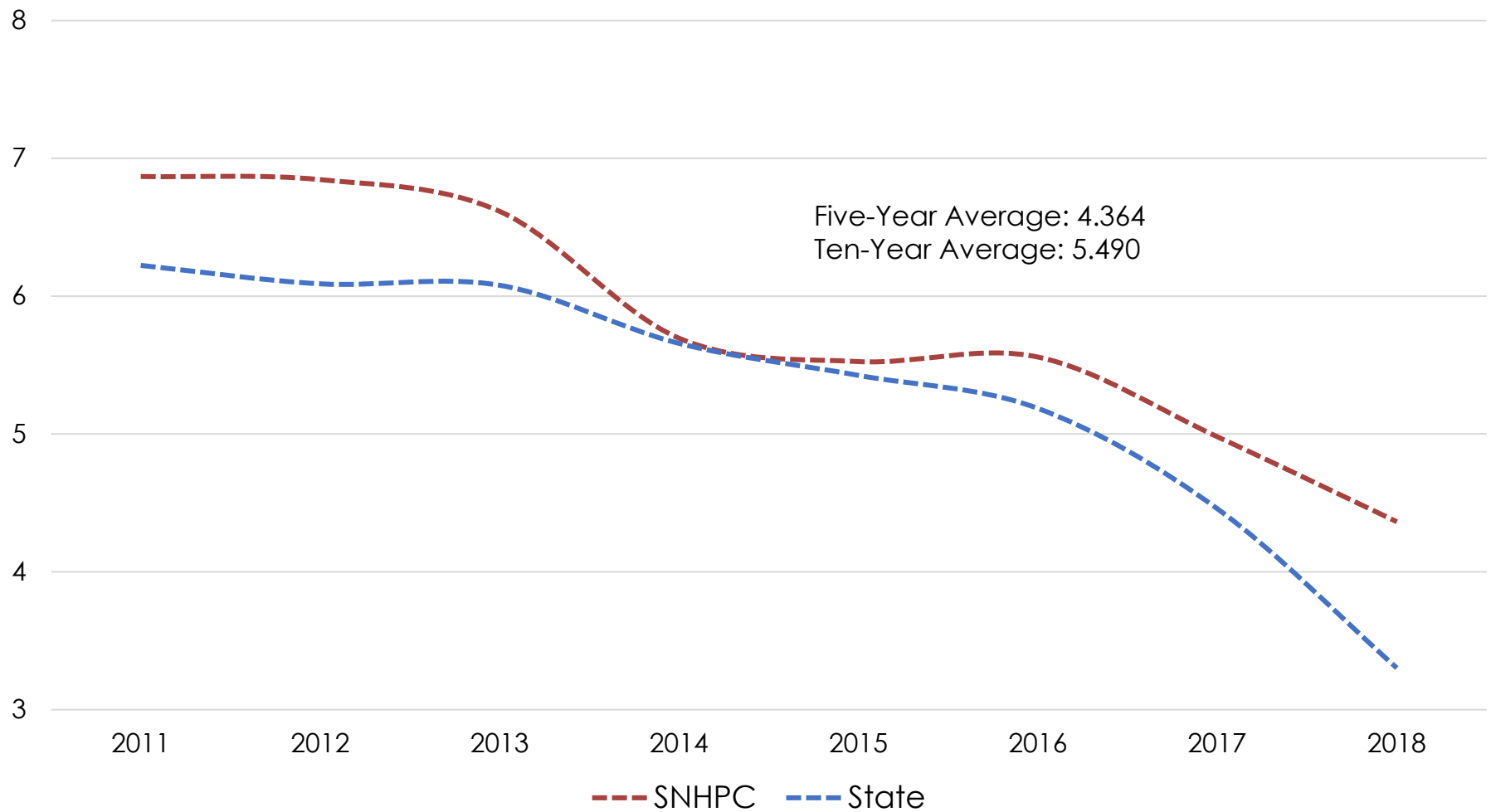


Measure 3: Proposed Target for the Number of Serious Injuries

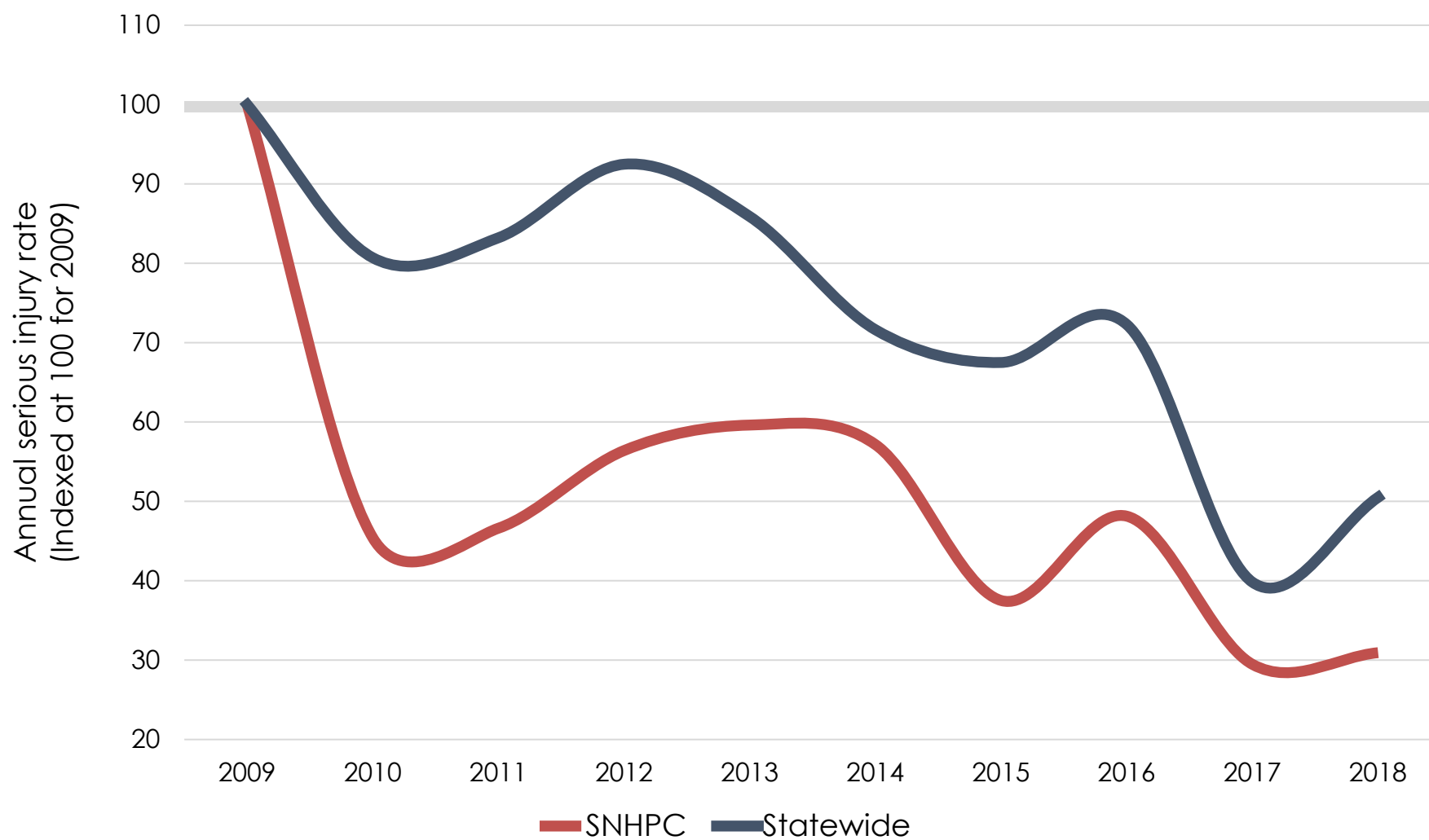


*These figures represent proportional distributions of the state's targets and are for illustrative purposes only

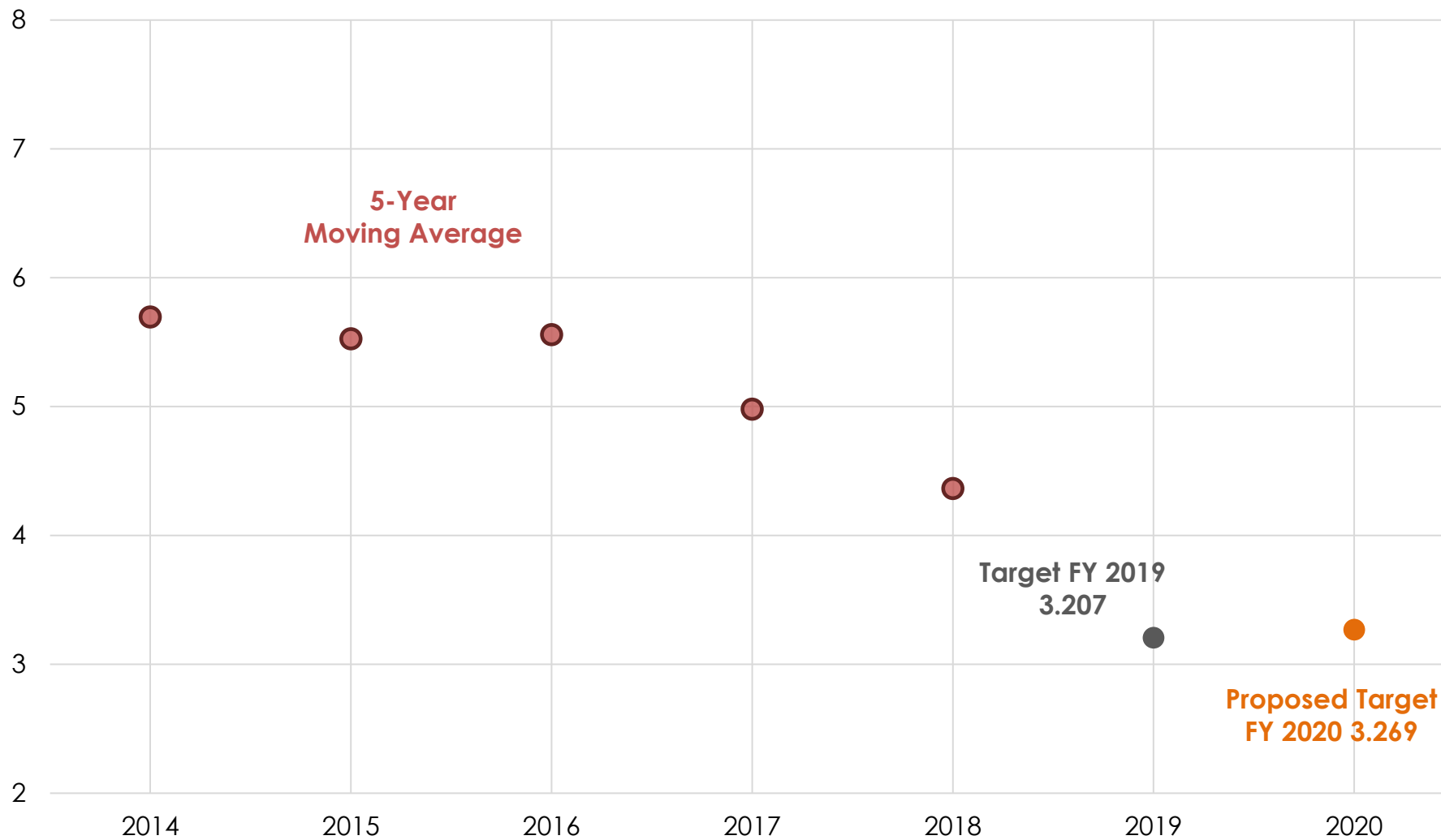
Measure 4: Serious Injury Rate (Five-Year Moving Average)



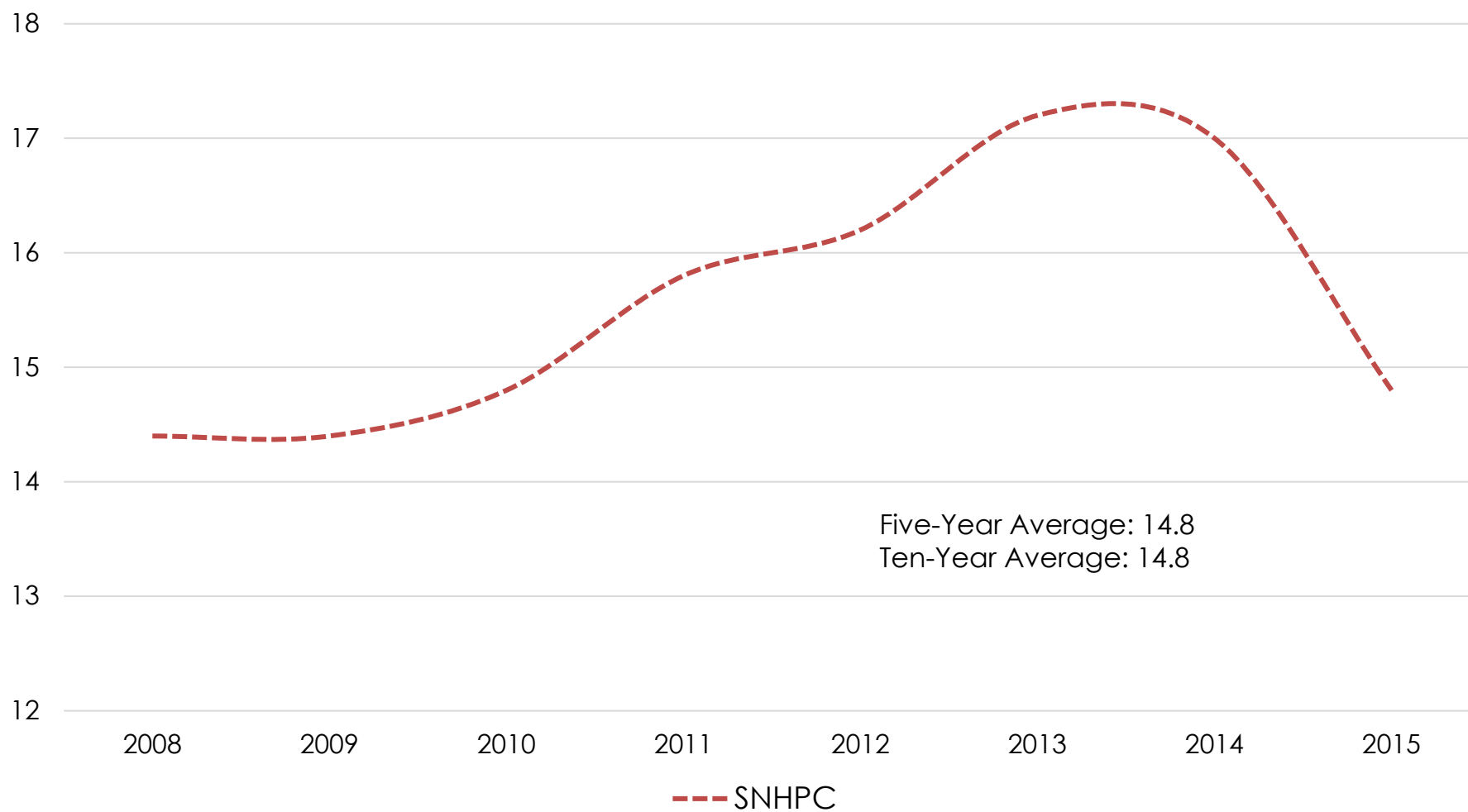
Change in the Serious Injury Rate



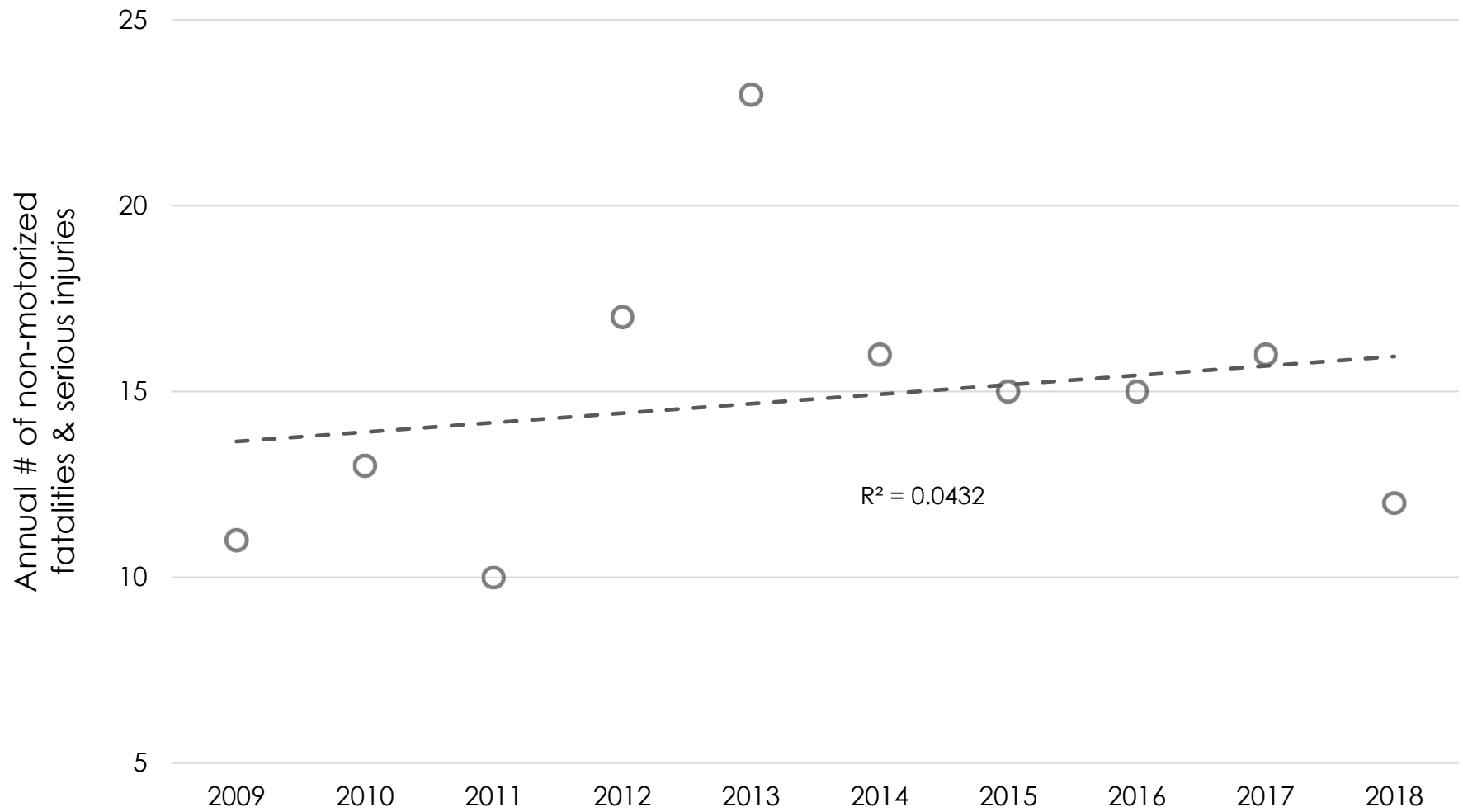
Measure 4: Proposed Target Serious Injury Rate



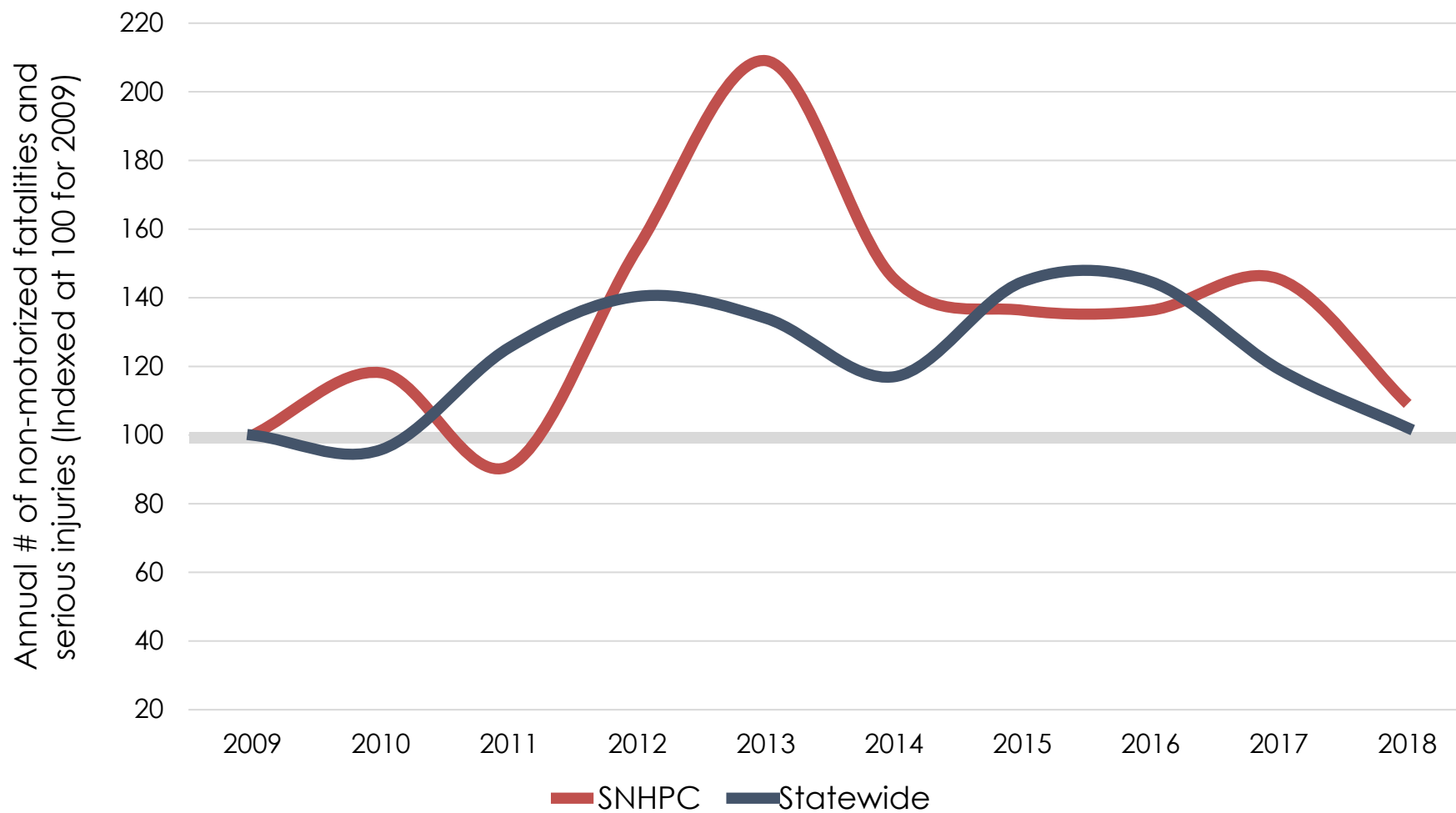
Measure 5: Number of Non-motorized Fatalities and Serious Injuries (Five-Year Moving Average)



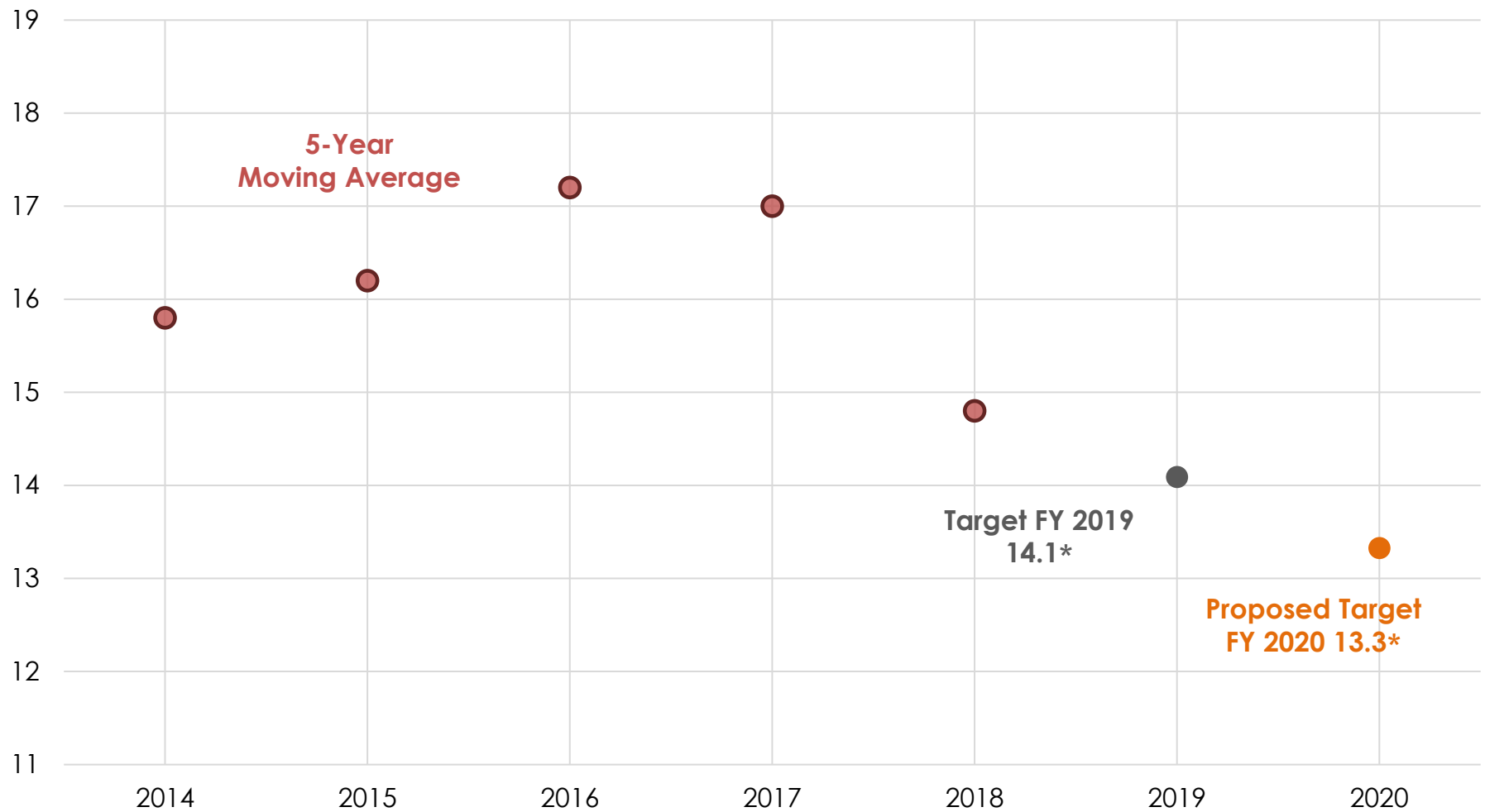
Number of SNHPC Non-motorized Fatalities and Serious Injuries



Change in the Number of Non-motorized Fatalities and Serious Injuries



Measure 5: Proposed Target for the Number Non-motorized Fatalities and Serious Injuries



*These figures represent proportional distributions of the state's targets and are for illustrative purposes only

N.H. Traffic Deaths Down by More Than 30% in 2019

By ASSOCIATED PRESS • JAN 2, 2020

[Share](#) [Tweet](#) [Email](#)



CREDIT NHPR STAFF

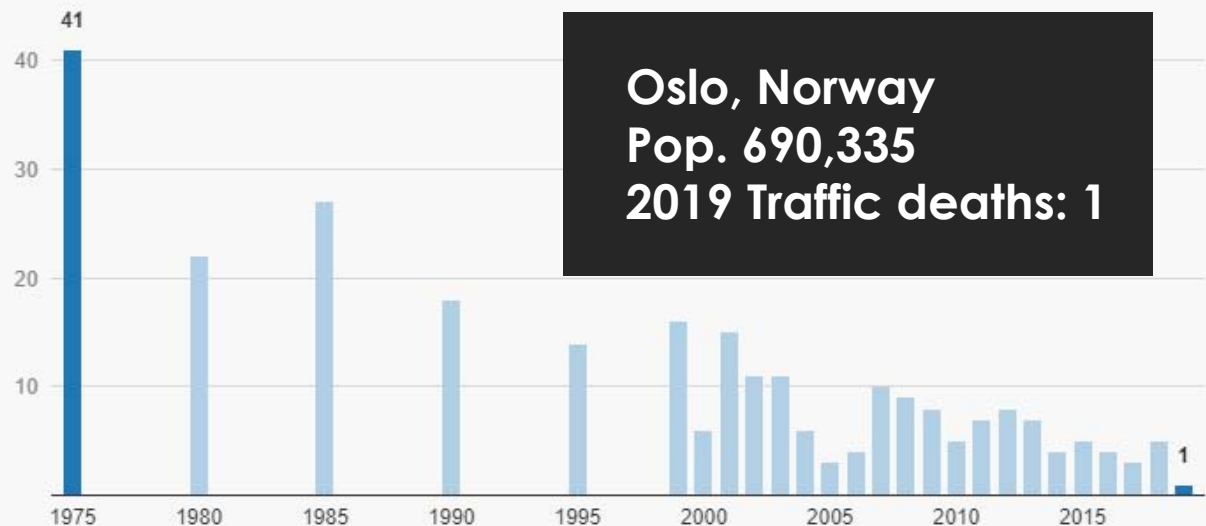
New Hampshire safety officials say traffic fatalities in the state were down by more than 30% in 2019.

State police and the Office of Highway Safety said that as of Dec. 31, there were 99 traffic-related fatalities and 88 fatal crashes.

At the same time, there were 143 traffic-related fatalities and 130 fatal crashes. Both figures were down by more than 30 percent. Impaired driving, speeding and distracted driving were the top contributing factors to crashes and fatalities in New Hampshire.

**NH 2019 Fatal Crashes: 88
Lowest since 2007**

Antall trafikkdrepte i Oslo



**Oslo, Norway
Pop. 690,335
2019 Traffic deaths: 1**

Siste 20 år og hvert femte år siden 1975

Kilde: Statens vegvesen

Aftenposten

2020 State-level Safety Performance Targets

Safety Measures	State Five-Year Rolling Averages		Trends		State Targets
	2013-2017	2014-2018	Recent	Desired	2020
Number of Fatalities	116.4	118.8	↑	↓	118.8
Fatality Rate per 100 Million VMT	0.881	0.885	↑	↓	0.885
Number of Serious Injuries	457.2	455.0	↓	↓	448.0
Serious Injury Rate per 100 Million VMT	3.342	3.303	↓	↓	3.269
Non-Motorized Fatalities and Serious Injuries	58.8	56.4	↓	↓	51.6

2020 Proposed SNHPC Safety Performance Targets

Safety Measures	SNHPC Five-Year Rolling Averages		Trends		State Target	SNHPC Recommended Target
	2013-2017	2014-2018	Recent	Desired	2020	
Number of Fatalities	18.0	19.2	↑	↓	118.8	Support State Target (approx. 18 regionally)
Fatality Rate per 100 Million VMT	0.7	0.7	↑	↓	0.885	Support State Target
Number of Serious Injuries	131.8	117.0	↓	↓	448	Support State Target (approx. 96 regionally)
Serious Injury Rate per 100 Million VMT	5.0	4.4	↓	↓	3.269	Support State Target
Non-Motorized Fatalities and Serious Injuries	17.0	14.8	↓	↓	51.6	Support State Target (approx. 13 regionally)

SNHPC 2020 Safety Performance Targets (Proposed)

Safety Measures	State Target	SNHPC Regional Target	Action
	2020		
Number of Fatalities	118.8	18.3	Support State Target
Fatality Rate per 100 Million VMT	0.885	0.885	Support State Target
Number of Serious Injuries	448	95.7	Support State Target
Serious Injury Rate per 100 Million VMT	3.269	3.269	Support State Target
Non-Motorized Fatalities and Serious Injuries	51.6	13.3	Support State Target

Supporting State's Safety Performance Targets

What does supporting mean for SNHPC?

For 2020, staff is recommending that the SNHPC again adopt the State of New Hampshire's Safety Performance Targets. In supporting the State-level targets, the SNHPC would be agreeing to:

- Work with the State and safety stakeholders to address areas of concern for fatalities or serious injuries within the SNHPC metropolitan planning area;
- Coordinate with the State and include the safety performance measures and HSIP targets for all public roads in the metropolitan area in the SNHPC Long-Range Transportation Plan; and
- Integrate into the metropolitan transportation planning process, the safety goals, objectives, performance measures and targets described in other State safety transportation plans and processes such as applicable portions of the HSIP, including the Strategic Highway Safety Plan.



Carl Eppich
Principal
Transportation
Planner
ceppich@snhpc.org

Zachary Swick
GIS Analyst
zswick@gmail.com

438 Dubuque St
Manchester, NH
03102
(603)669-4664

Questions?



SNHPC