

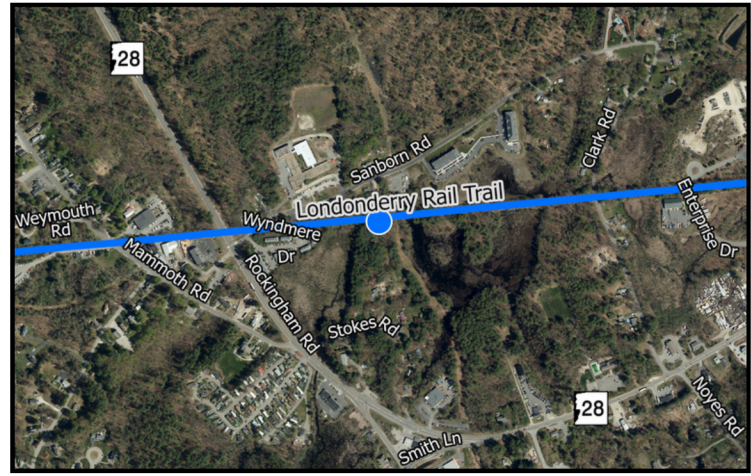
LONDONDERRY RAIL TRAIL

Data Brief: 2023

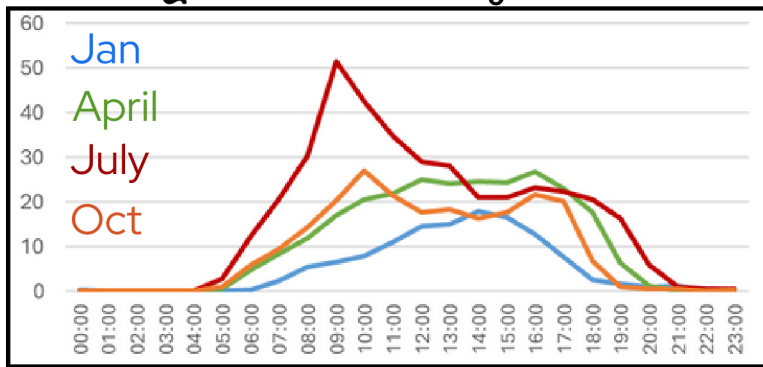
Count Summary

You may be surprised to learn that the Londonderry Rail Trail has about 330 users a day in the summer and 117 in the winter. This summary gives insights on data collected near the Sanborn Rd trailhead, one of two long-term sites at which SNHPC staff collected data throughout 2023. For more info on this program, go to:

www.snhpc.org/transportation/bicyclepedestrian



Avg. # of Hourly Users



**Data were compromised from 5/24-6/28 and 9/8-9/20.*



Data Snapshot

- This is one of the most heavily-used rail trails in the SNHPC region.
- The week of 1/30 saw the lowest usage of the year (319 total users).
- In spring and fall, average hourly volumes are consistent during any given day.
- There was a marked peak during the 9:00 hour in July (see chart at left).
- Due to the inordinate amount of rain that fell in 2023, summer volumes were generally lower than in 2022.
- The week of 7/31 saw the highest usage of the year (3,901 total users).



782

Most single-day
trail users (7/30)

SUNDAY

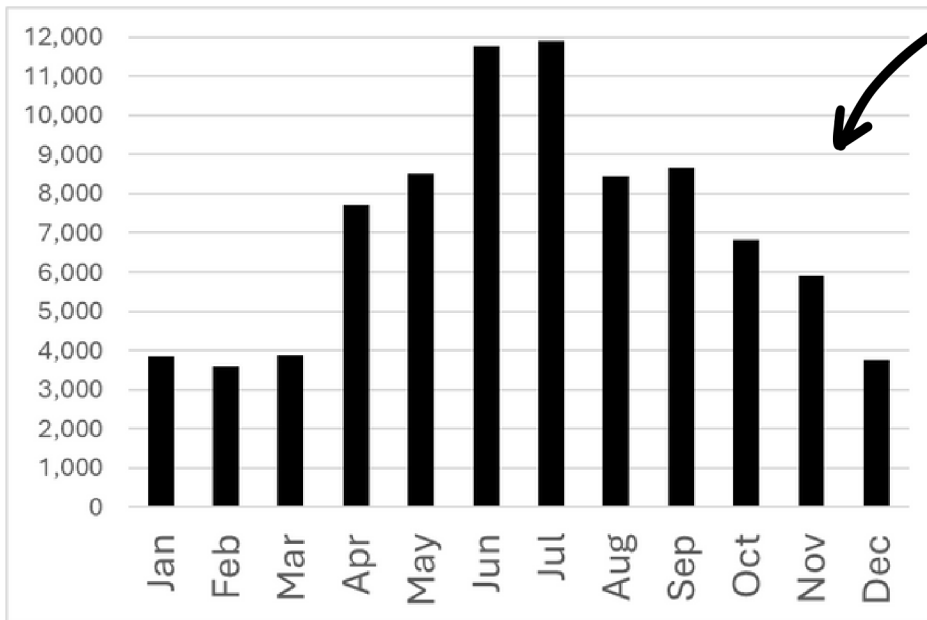
Most popular day of
the week (280 avg.
users year-round)

1,521

Average weekly
users year-round

LONDONDERRY RAIL TRAIL

Data Brief: 2023



Monthly Totals

(Based on Average Daily Traffic*)

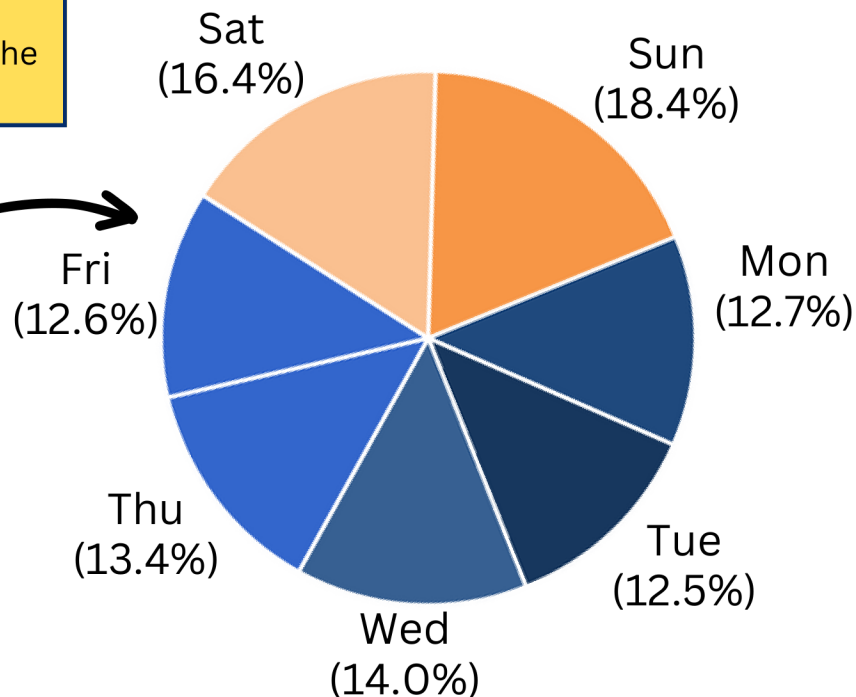
- Winter usage was consistent at almost 4,000 users per month (January-March, December).
- Spring and Fall totals ranged from 6,000-8,500 users per day, depending on the month.
- June and July saw the highest totals, at nearly 12,000 trail users per month.

*Average Daily Traffic:

The number of trail users passing in front of the counter on an average day.

Daily Breakdown

- Nearly 35% of overall trail usage occurred on weekends.
- Sunday saw the most trail usage (18.4%), followed by Saturday (16.4%).
- Weekday usage was fairly evenly spread, each weekday ranging from 12.5-14% of the weekly total.



SNHPC takes requests for short-term (3-week) bike/ped counts year-round.

If you'd like us to count in your community, please contact
Senior Transportation Planner Adam Hlasny at
603-669-4664 or ahlasny@snhpc.org

