

# Visions

SERVING OUR REGION'S COMMUNITIES SINCE 1966



## Winter 2023-2024

### Board of Commissioners

#### Auburn

- Paula Marzloff
- Jeffrey Porter, Alt.
- *Seeking Representative*

#### Bedford

- Bill Jean
- Bryan Lord, Alt.
- Danielle Evansic, Alt.
- Daniel Heath, Alt.
- *Seeking Representative*

#### Candia

- Rudy Cartier
- *Seeking Representative*

#### Chester

- Andrew Hadik
- Deborah Munson
- Dana Theokas, Alt.

#### Deerfield

- Frederick McGarry
- Erroll Rhodes
- *Seeking Alt. Representative*

#### Derry

- Jeffrey Moulton
- John O'Connor
- Richard Tripp
- *Seeking Representative*
- *Seeking Alt. Representative*

#### Francetown

- Linda Kunhardt
- Alfred Eisenberg, Alt.
- Jennifer Vadney, Alt.
- Gary Schnakenberg

#### Goffstown

- Barbara Griffin
- Jacob LaFontaine
- Jo Ann Duffy, Alt.
- Colleen Mailloux

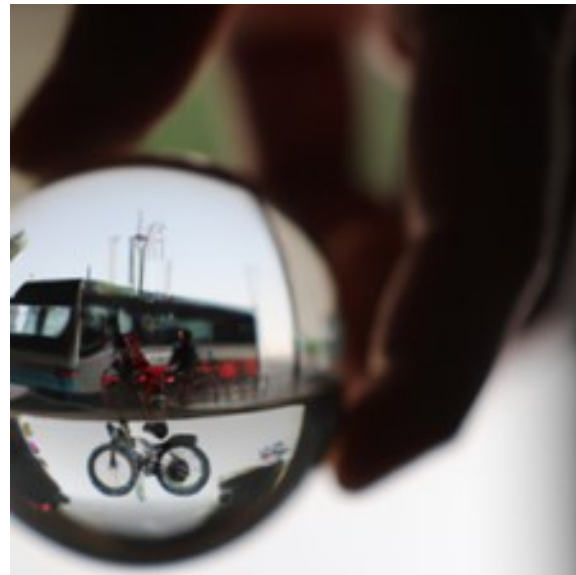
#### Hooksett

- Denise Pichette-Volk
- Robert Duhaime, Alt.
- *Seeking Representative*

#### Londonderry

- Debora Lievens
- **Arthur Rugg, Secretary**
- Suzanne Brunelle
- Brian Battaglia

## This Season's Newsletter Theme is Sustainability...



This winter's SNHPC newsletter focuses on some of the work SNHPC is doing in the realm of sustainability planning.

As a 64-year-old who has cared about the environment for much of my life, I was introduced to the concept of sustainability in the subtleties of recycling in the 60's, gas rationing in the 70's, house-sharing in the 80's, and eco-friendly engineering in the 90's.

Many of SNHPC's younger staff have also embraced sustainability concepts and have their own stories. I asked them, "If you had a crystal ball to help you predict the most important thing we could do to create a sustainable region and/or state, what would appear to you?" The answers were quick to come, including:

- Less consumption of land and resources.
- Reducing our carbon footprint via alternative transportation options including rail, creating walkable/bikeable communities, and improving connectivity.

- Lynn Wiles, Alt.
- Jeff Penta, Alt.

#### Manchester

- Peter Capano
- **Raymond Clement, Treasurer**
- Daniel O'Neil
- Donald Waldron
- Marcus Ponce de Leon, Alt.

#### New Boston

- **Mark Suennen, Vice Chair**
- David Litwinovich
- *Seeking Alt. Representative*

#### Weare

- Naomi Bolton
- *Seeking Representative*
- *Seeking Alt. Representative*

#### Windham

- **Peter Griffin, Chair**
- Edgar Lapointe
- *Seeking Representative*
- *Seeking Alt. Representative*

- Bringing food production closer to home.
- Improving energy efficiencies in everything.
- Embracing sustainable land use practices such as sustainable timber harvesting.

Please enjoy this sustainability-themed newsletter and consider what we may do as a region to move the dial on the sustainability meter.

- Sylvia



## Help Shape New Hampshire's Next Climate Action Plan!

New Hampshire has received federal grant funding to update its Climate Action Plan through the US Environmental Protection Agency's [Climate Pollution Reduction Grant program](#). This winter, a series of collaborative community conversations hosted by New Hampshire Listens will help identify priority strategies for reducing harmful air

pollution and greenhouse gas emissions, while also supporting good jobs and lower energy costs.

Make sure your voice is heard! **We particularly encourage you to attend a dynamic in-person event for the greater Manchester region, which will take place at the [SEE Science Center on Thursday, February 1 at 5pm](#).** Alternatively, [register to participate](#) in a virtual cross-sector stakeholder gathering (Feb 8), or other community-focused conversations taking place online and throughout the state.

Key partners in this effort include the NH Department of Environmental Services, NH Listens, the Southern NH Planning Commission, the Metropolitan Area Planning Council, and SEE Science Center. Insights gathered at the February 1 session will also help inform the Climate Action Plan for Greater Boston.

For more information on SNHPC's climate planning initiatives, contact Suzanne Nienaber, Principal Planner, at [snienaber@snhpc.org](mailto:snienaber@snhpc.org).

**Winter Bike to Work Day**  
**Friday, February 9, 2024**

*Cyclists in the Granite State will once again take to the streets in celebration of Winter Bike to Work Day on Friday, February 9<sup>th</sup>.*

In addition to the health and financial benefits of bicycle commuting, riders who take the [Bike to Work pledge](#) will also have an opportunity to win prizes generously donated by [REI Bedford](#).

Breakfast stations at the West Side Ice Arena and Eighty Eight Coffee Co. in Manchester will provide energy and warmth to commuters en route. In the evening, commuters are invited to celebrate their accomplishment with cocktail and mocktail specials at [Manchester Distillery](#) – a great opportunity to share epic tales of the day's adventures with other cyclists.

"Bike Home Happy Hour celebrations are a great time to come together to celebrate the joys of biking," says SNHPC Regional Planner Tammy Zamoyski. "Mornings can be hectic (especially in the winter) and different work schedules can make it hard to cross paths with other commuters. Happy hour is a fun way to build community and really see how many other people are doing what you do."

There are many ways to participate, even if you don't typically bike to work.

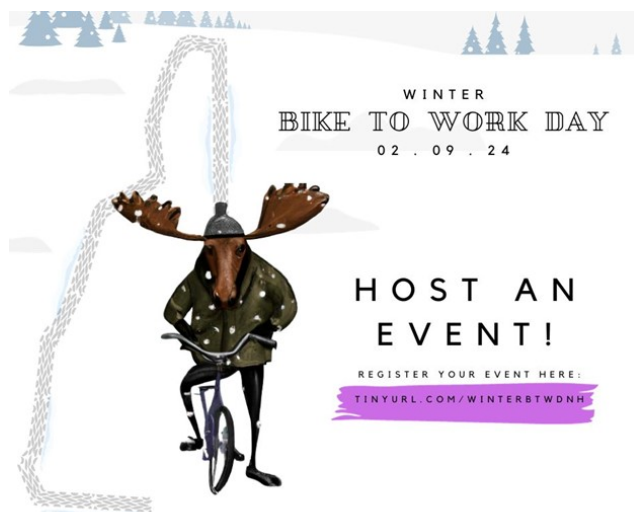
- Manchester Transit is once again offering free rides to anyone who uses the bus bike racks on Winter Bike to Work Day. Combining a bike trip with public transportation is a clever way to shorten your bike trip on cold, dark days (or to just skip the hills on the way home!).
- Manchester Parks and Recreation has designated four Park & Pedal locations for folks who may live too far away to bike all the way to work. Commuters can leave their vehicles and bike the rest of the way to work or a breakfast station.
- Remote workers are encouraged to participate, too! People who work from home can still take the pledge to ride and bike to get coffee, lunch, to visit a friend, or run errands!

Just like driving, biking in winter conditions can present different challenges. REI will be hosting a free **Winter Biking 101 class on Friday, February 2** from 6-7pm at their store in Bedford to help new and experienced riders.

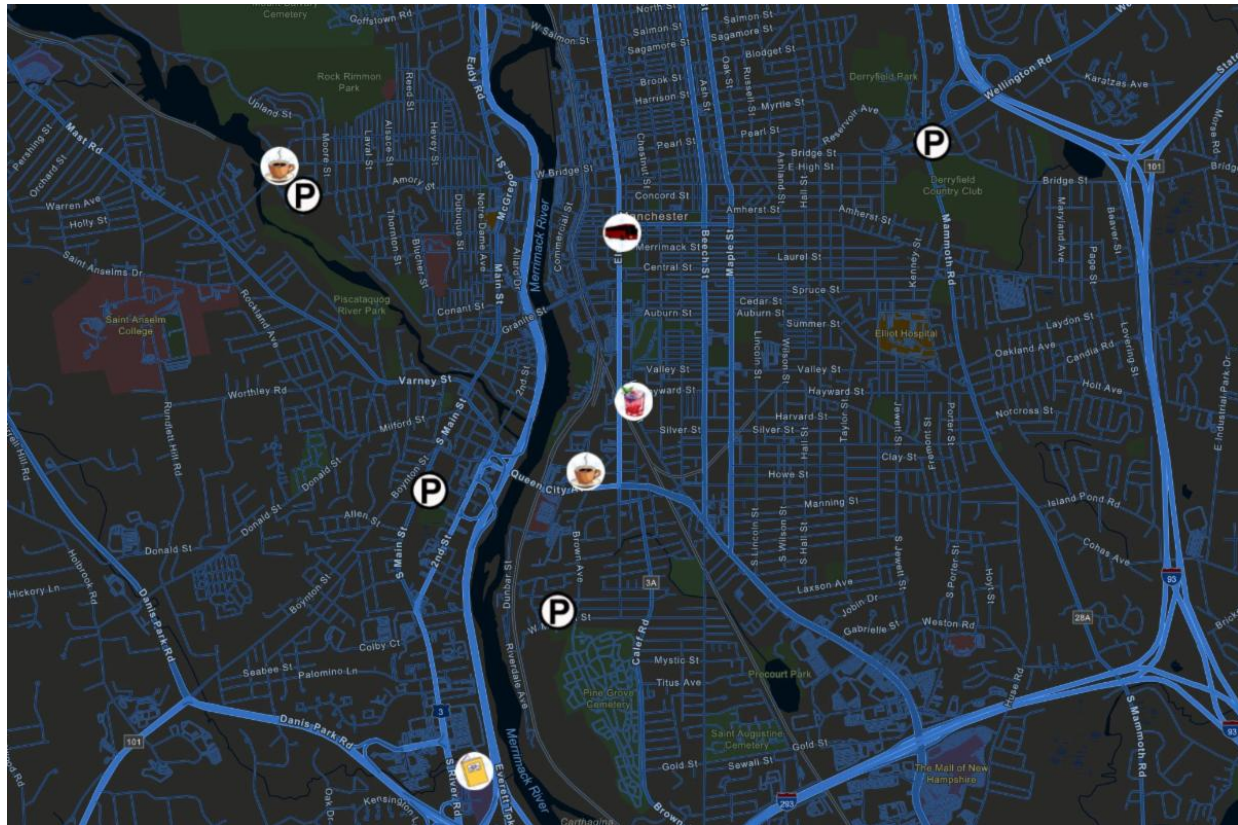
For more information on events, safety tips, and to take the pledge, please visit [tinyurl.com/winterbtwdnh](https://tinyurl.com/winterbtwdnh).

All year round, active transportation is a fun and healthy way to get from point A to point B. Replacing short car trips with walking or biking is also an effective way to reduce greenhouse gas emissions in our region (state DOTs and MPOs are now [required](#) to set their own targets to reduce GHG emissions from roadway travel, the [largest source](#) of GHG emissions in the U.S.).

To learn more about Winter (and Spring, Summer, Fall) Biking to Work, contact Regional Planner Tammy Zamoyski at [tzamoyski@snhpc.org](mailto:tzamoyski@snhpc.org).







There are many ways to participate, even if you don't typically bike to work.

- Manchester Transit is once again offering free rides to anyone who uses the bus bike racks on Winter Bike to Work Day. Combining a bike trip with public transportation is a clever way to shorten your bike trip on cold, dark days (or to just skip the hills on the way home!).
- Manchester Parks and Recreation has designated four Park & Pedal locations for folks who may live too far away to bike all the way to work. Commuters can leave their vehicles and bike the rest of the way to work or a breakfast station.
- Remote workers are encouraged to participate, too! People who work from home can still take the pledge to ride and bike to get coffee, lunch, to visit a friend, or run errands!

Just like driving, biking in winter conditions can present different challenges. REI will be hosting a free **Winter Biking 101 class on Friday, February 2** from 6-7pm at their store in Bedford to help new and experienced riders.

For more information on events, safety tips, and to take the pledge, please visit [tinyurl.com/winterbtwdnh](https://tinyurl.com/winterbtwdnh).

All year round, active transportation is a fun and healthy way to get from point A to point B. Replacing short car trips with walking or biking is also an effective way to reduce greenhouse gas emissions in our region (state DOTs and MPOs are now [required](#) to set their own targets to reduce GHG emissions from roadway travel, the [largest source](#) of GHG emissions in the U.S.).

To learn more about Winter (and Spring, Summer, Fall) Biking to Work, contact Regional Planner Tammy Zamoyski at [tzamoyski@snhpc.org](mailto:tzamoyski@snhpc.org).

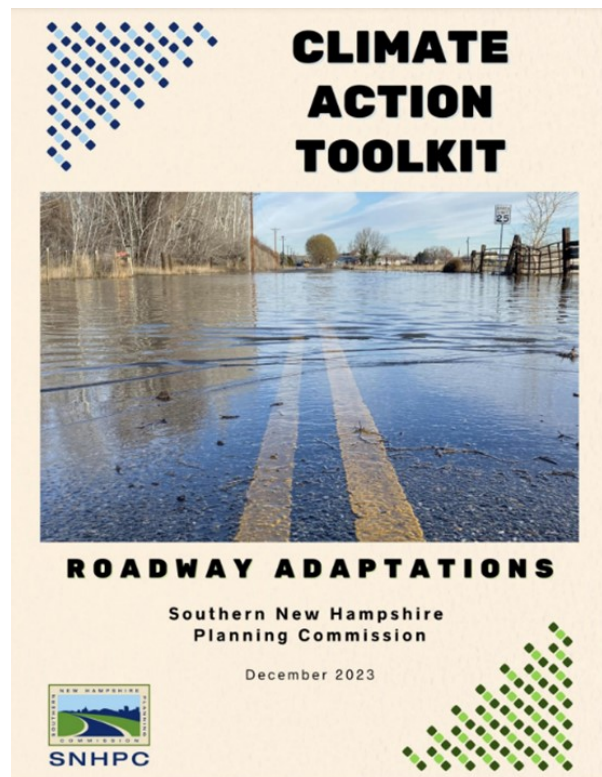
## Introducing SNHPC's Roadway Adaptation Toolkit



As New Hampshire emerges from [one of its wettest years on record](#), SNHPC is thrilled to announce the release of a timely new resource – a [Climate Action Toolkit focused on roadway adaptations](#).

The greatest climate threat facing our region is inland flooding due to extreme precipitation events. Many communities are all too familiar with the challenges associated with road washouts. Recognizing that the functionality and reliability of our transportation network is a priority issue for every community, SNHPC convened a diverse cross section of stakeholders and subject matter experts in 2023 to address concerns around roadway vulnerabilities.

The resulting roadway adaptation toolkit builds upon a breadth of data and expertise, including a [Regional Vulnerability Assessment](#) completed in 2020, a detailed review of publications from across the country, and input generated during an [interactive stakeholder workshop](#).



The toolkit provides access to a wide range of resources, including:

- a high-level overview of climate-related concepts (Chapter 1);
- a detailed analysis of corridor-scale vulnerabilities in our region (Chapter 2);
- a menu of roadway adaptation strategies, including a handy checklist (Chapter 3);
- a discussion of practical implementation considerations (Chapter 4); and
- community-specific data (Appendix).

Throughout the toolkit, you'll find a variety of project examples that illustrate key concepts, as well as links for further reading.

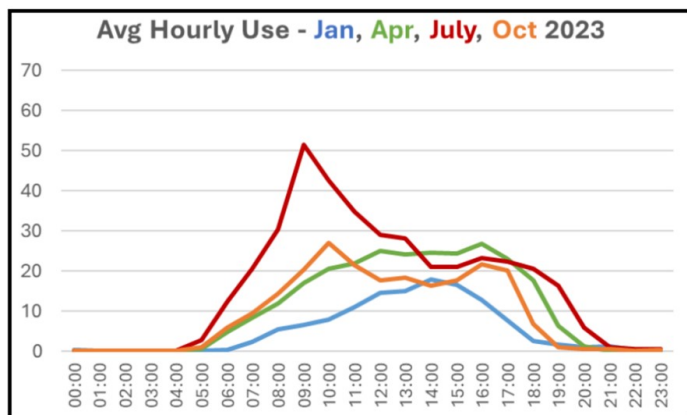
The full impact of this toolkit will rely on the commitment of local and regional stakeholders to pursue collaborative action in the face of climate change. We encourage you to [download the toolkit today](#), and share this resource with anyone interested in tackling roadway adaptation! By working together to design systems that are attuned to an evolving climate, we can minimize damage – and identify new and innovative opportunities for human and ecological systems to thrive together.

For more information on SNHPC's climate planning initiatives, contact Suzanne Nienaber, Principal Planner, at [snienaber@snhpc.org](mailto:snienaber@snhpc.org).

## 2023 Bike-Ped Counting Season in Review

Sustainability comes in many forms, one of which is using alternative modes of transportation to get around<sup>[1]</sup>. The Greater Manchester region has a robust rail trail network, and quantifying how many folks are using it has been an SNHPC priority since 2017. During 2023's wet summer it was evident that trails were being used as much by insects as by people.

SNHPC began its 2023 season on December 6, 2022, when staff installed its first-ever long-term trail user counts on the Londonderry and Windham Rail Trails. Staff fastened these counters to trees and left them out for a full year, downloading data every few weeks. While there were several hiccups related to battery failure and ant colonization, (that is not a typo, ants created challenges by blocking sensors and rendering three separate sets of count data unusable!) the data collected



proved valuable, and can be used to benchmark trail usage in all four seasons (Londonderry hourly data summary below). The Windham Rail Trail proved to be the most-used rail trail in the SNHPC region. Monthly usage ranged from 4,000 in the winter months to nearly 12,000 in June and July.

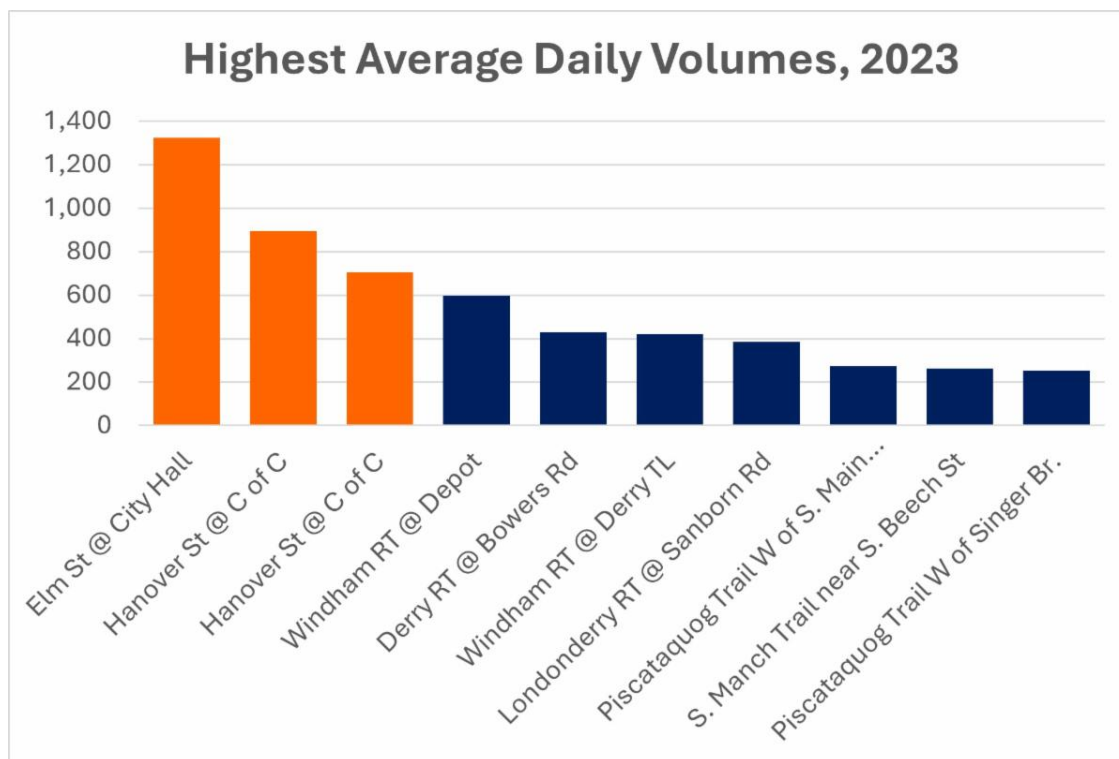
Short-term (three-week) bike-ped counts were also conducted throughout the year in the SNHPC region. In 2023, the counting team of Dave Tilton, Anthony Summers, Tammy Zamoyski and Adam

Hlasny saw the completion of 31 counts in 8 communities.

Most-used sidewalks were Elm and Hanover Streets in Manchester. Most-used trails included Windham, Derry, Londonderry, as well as Manchester's Piscataquog Trail.

[1] For a list of resources, please visit:

[https://www.pedbikeinfo.org/factsfigures/facts\\_environment.cfm](https://www.pedbikeinfo.org/factsfigures/facts_environment.cfm)



2024 will mark the 8<sup>th</sup> year of SNHPC's bike-ped counting program. Long-term counts are already underway on the Derry Rail Trail and Rockingham Rail Trail in eastern Manchester.

**If your municipality would like to request a count, please use this form:**

[https://docs.google.com/forms/d/1IKTBqQUQjvfXM380mzSN106EiXTYwtWkpO1NN9Q7eqo/viawform?edit\\_requested=true](https://docs.google.com/forms/d/1IKTBqQUQjvfXM380mzSN106EiXTYwtWkpO1NN9Q7eqo/viawform?edit_requested=true)

Don't hesitate to ask us any questions, and if you happen to see the field crew while enjoying our region's rail trail network, feel free to pop over and say hello!

For details about SNHPC'S Bike-Ped Counting, contact Senior Transportation Planner Adam Hlasny at 603-669-4664 or [ahlasny@snhpc.org](mailto:ahlasny@snhpc.org).



## 2023 Green Your Fleet Event

On June 9, 2023, the Green Your Fleet (GYF) demonstration was held at the New Hampshire Motor Speedway in Loudon. Heralded as the largest Alternative Fuel and Electric Vehicle demonstration in New England, it certainly lived up to the billing. The GYF event spotlighted advances made in EV charging and solar power technology, including electric vehicles that can be used for municipal services such as buses, waste management and road maintenance as well as the promotion of alternative fuels such as electric, biodiesel, propane, and hydrogen.

*Above: An EV is charged by a portable EV charging station. Below: U.S. Senator Maggie Hassan speaks at GYF.*

Although the weather was overcast and unseasonably cold, the event brought together a wide range of participants from the commercial, planning, industry and municipal worlds to learn more about clean energy vehicle options. The event was capped off by a "ride and drive" event that allowed participants to either drive or ride in selected electric vehicles on the Motor Speedway racetrack. Speakers at the event included U.S. Senator Margaret Hassan and Margret Smith, Technology Manager at the U.S. Department of Energy Vehicle Technologies Office who discussed a \$2 million grant for the development of clean energy community transportation plans in the New England region.

The Green Your Fleet event is held every two years, so interested parties will have to wait until 2025 to attend. In the meantime, check out other events being coordinated by the [Granite State Clean Cities Coalition](#).

For details, contact Senior Transportation Planner Dave Tilton at [dtilton@snhpc.org](mailto:dtilton@snhpc.org).



## Planning for an EV World

**Electric vehicles are not a fad;** the growth in their usage is proof enough. Zach Swick, SNHPC Senior GIS Analyst and general SNHPC data guru, shared that in 2016, there were 400 EVs registered in the state of NH. Throughout New England, there were 6,900. By 2022 the number of registered EVs in the state had grown to 7,000-- an increase of 1,650%. The number of EVs grew on average 62% annually between 2016 and 2022. In New England there were 93,000 EVs by 2022. Initial numbers for 2023 provide additional evidence that the numbers are continuing to grow.





	Registered EVs						
	2016	2017	2018	2019	2020	2021	2022
NH	400	600	1,200	1,900	2,700	4,000	7,000
CT	2,000	3,000	5,000	6,900	9,000	13,300	22,000
MA	3,600	5,600	10,300	14,100	21,000	30,500	49,400
ME	300	500	800	1,300	1,900	3,000	5,000
RI	300	400	700	1,100	1,600	2,500	4,300
VT	300	700	1,100	1,700	2,200	3,400	5,300
NE	6,900	10,800	19,100	27,000	38,400	56,700	93,000
US	280,300	377,100	572,600	783,600	1,018,900	1,454,400	2,442,300

Source: [Department of Energy](#)

**Making it Personal:** Not sure if you're ready to purchase an electric vehicle? Maybe you're worried about the cost or where you can charge it. If you are thinking of buying a new car, check out this site to help you make your decision about electric or not: <https://driveelectricus.com/>

**Municipal Funding Resources:** According to the National Association of Regional Councils' December 21, 2023 article on Funding Options for EV Charging Station, the National Electric Vehicle Infrastructure (NEVI) Formula Program is slated to invest \$5 billion over the next five years. Those efforts will also be complemented by DOT's Charging and Fueling Infrastructure Discretionary Grant Program, which provides \$2.5 billion in grant funds to strategically deploy publicly accessible EV charging and alternative fueling infrastructure in communities. In a statement by NHDOT on Oct. 17th, the NEVI program will provide more than \$17 million to New Hampshire over a five-year period to deploy fast and reliable electric vehicle charging stations along alternative fuel corridors. To learn more about NH's phase 1 program click [here](#). NEVI funding is just one of the many funding sources for EV charging stations, for example NHDOT included over \$11 million dollars' worth of EV charging station projects in the state's recent Ten Year Plan paid by [CMAQ funding](#).

**Where to Put Them:** In 2023, SNHPC released its regional plan to identify potential EV charger sites that would complement NHDOT's planned statewide network. SNHPC conducted an analysis of viable DC Fast Chargers and Level 2 EV charging sites, focusing in on the region's major corridors: US Route 3, I-293, NH Routes 28, 101, 102, 111, and 114 and other SNHPC towns' centers. The analysis includes information about public and private sites including access, parking availability, services and shopping opportunities, proximity to recreation, parks, and other destinations/ attractions as well as proximity to "3-phase power" critical to powering DC fast chargers. In all, over 100 sites were identified, reviewed against viability criteria, and reviewed with local municipal staff. The analysis resulted in 60 potential DCFC and/or Level 2 charging stations sites throughout the region. For details on the plan and other EV info, check out SNHPC's website: <https://www.snhpc.org/environmental-energy-planning/climate-resiliency/pages/electric-vehicles>

**EV Resource Guide:** Our colleagues at Strafford Regional Planning Commission (SRPC) recently created a guide to help municipalities navigate the processes to increase installation of EV charging

stations. It was their hope to provide a helpful guide and clearinghouse of resources available to increasing EV charging stations in their communities and within the SRPC region. Please take a look at this robust resource:

<https://storymaps.arcgis.com/collections/382955cb53144078824e0bf40ac0340f>

**Permitting EV Charging Stations:** The Northeast States for Coordinated Air Use Management has developed a [handy resource](#) for guiding state and local governments through the permitting process. NESCAUM is a coalition of state air agencies who promote regional cooperation and action by its member states in support of effective programs to reduce the adverse public health and environmental impacts of air pollution and climate change.

## SNHPC Seeks Another Awesome Planner!

Would you like to become part of the amazing SNHPC Planning Team?

Please review our job opportunity and consider applying:

[https://www.snhpc.org/sites/g/files/vyhlf5006f/uploads/23-0601\\_planner\\_listing.pdf](https://www.snhpc.org/sites/g/files/vyhlf5006f/uploads/23-0601_planner_listing.pdf)



### **SNHPC Commissioner Spotlight**

#### **Barbara Griffin, Goffstown**

*We invited longtime Commissioner and former SNHPC Chair Barbara Griffin from Goffstown to contribute something about herself and thoughts about her extensive volunteer work. Barbara shared this:*

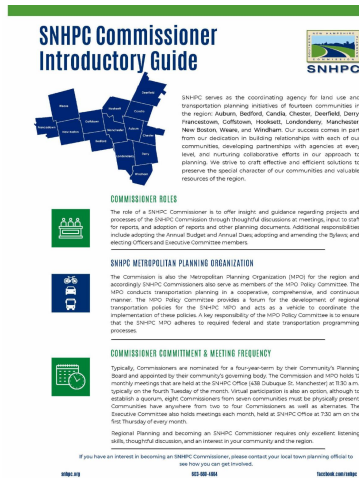
Being on SNHPC has been a great experience. I applied for membership in this organization (in 1994!) because I believed that planning issues would be important in our communities and State. NH has grown from approximately 1 million residents when I moved here in 1987 to 1.4 million today, and the majority of that growth has been in the southern tier which SNHPC serves.

SNHPC itself has developed from meeting in a basement conference room in the mill buildings to its own facility on the west side of Manchester. Member communities have increased since I joined because it is recognized that the organization helps all of our communities ensure that the funds available for roads and infrastructure are applied appropriately. It is only through 'local' participation that big projects and small can be the best and I am proud to be part of SNHPC which has been a partner in that growth.

In addition to SNHPC, I have served on local boards and committees for my town such as the Piscataquog Land Conservancy Board of Directors, the Goffstown budget committee, Board of Selectman, Library trustees, and solid waste committees. I served at the State House as a Representative for eight years. Currently I am on the Goffstown planning board.

I have been an attorney here in NH with my own practice for many years. While retiring from practicing law, I perform guardian work for private parties and the State. I have a law degree from Suffolk University and an MSW from Boston University. I live in Goffstown with my husband, parrot and dog. A horse is boarded nearby.

**Have you thought of becoming a Commissioner?**



Our volunteers often come from Planning Boards, Conservation Commissions, or other land use boards. We currently need regular members and Technical Advisory Committee (TAC) representatives.

Need information on what a Commissioner/MPO representative does? Look no further! We have a Commissioner factsheet available to anyone wanting more information: [click here!](#)

SNHPC is currently seeking Commissioners from **Auburn, Bedford, Candia, Chester, Deerfield, Derry, Hooksett, New Boston, Weare and Windham.**

To learn more, visit <https://www.snhpc.org/about-snhpc/pages/commission>, and if you want to volunteer, contact

your local community planning office or governing officials.

**Southern New Hampshire Planning Commission**  
snhpc.org



The Southern NH Planning Commission | 438 Dubuque Street, Manchester, NH 03102

[Unsubscribe](#) [Imoore@snhpc.org](mailto:Imoore@snhpc.org).

[Update Profile](#) | [Constant Contact Data Notice](#)

Sent by [Imoore@snhpc.org](mailto:Imoore@snhpc.org) powered by



Try email marketing for free today!