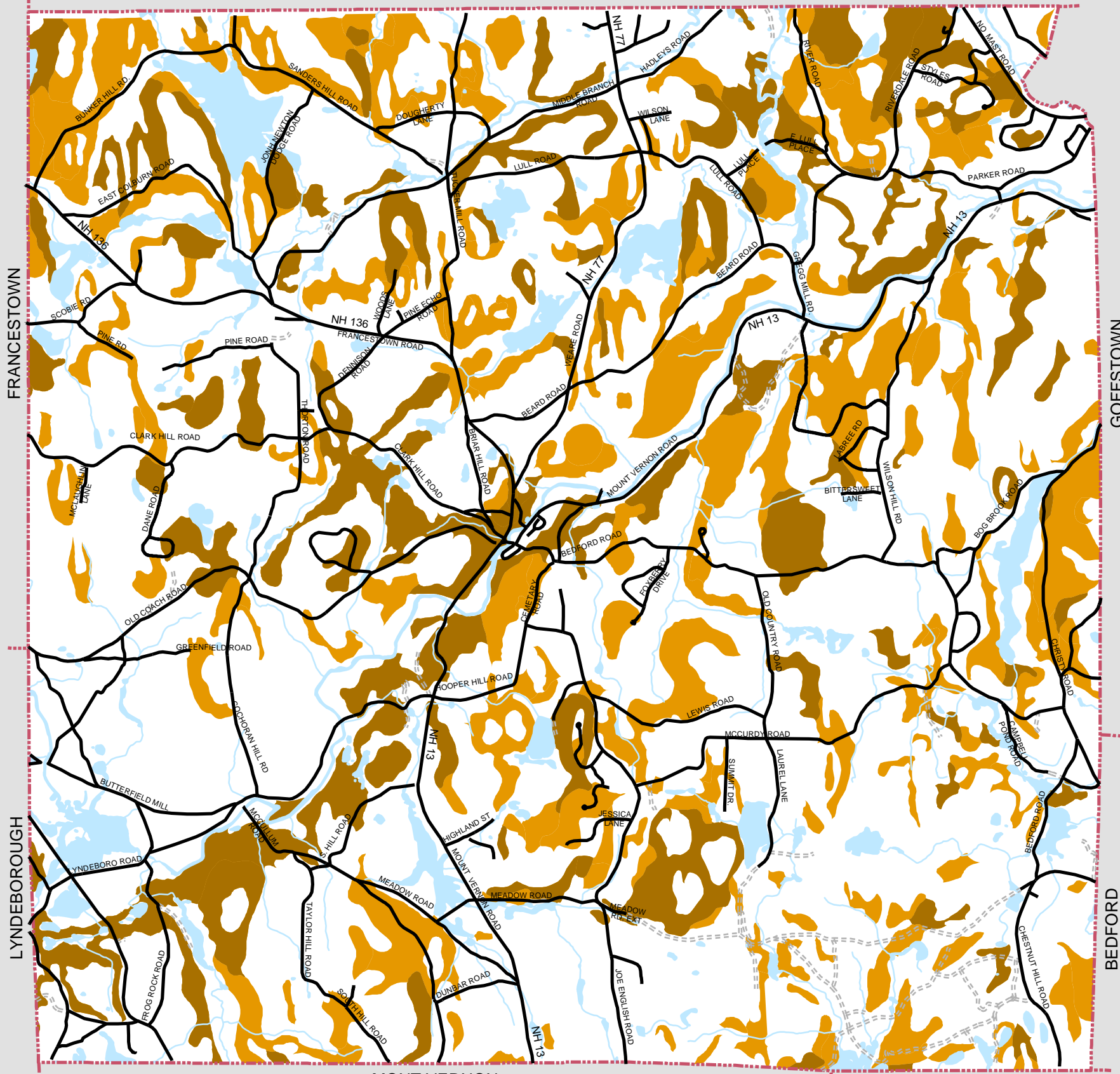


WEARE



Steep Slopes

Town of New Boston

- 15% to 25% Slope
- 25% Slope Or Greater
- Water Bodies
- Roads
- Private Roads
- Town Boundary

Base features are from USGS 1:24,000 scale Digital Line Graphs, as archived in the GRANIT database at Complex Systems Research Center, University of New Hampshire. All base features distributed by Complex Systems Research Center, Durham, NH. Some new road features added by SNHPC with GPS.

Steep slopes extracted from county-wide soils data produced by USDA Natural Resource Conservation Service at a scale of 1:20,000 or 1:24,000.

Data registered to New Hampshire State Plane Coordinate, 1983 datum.

